

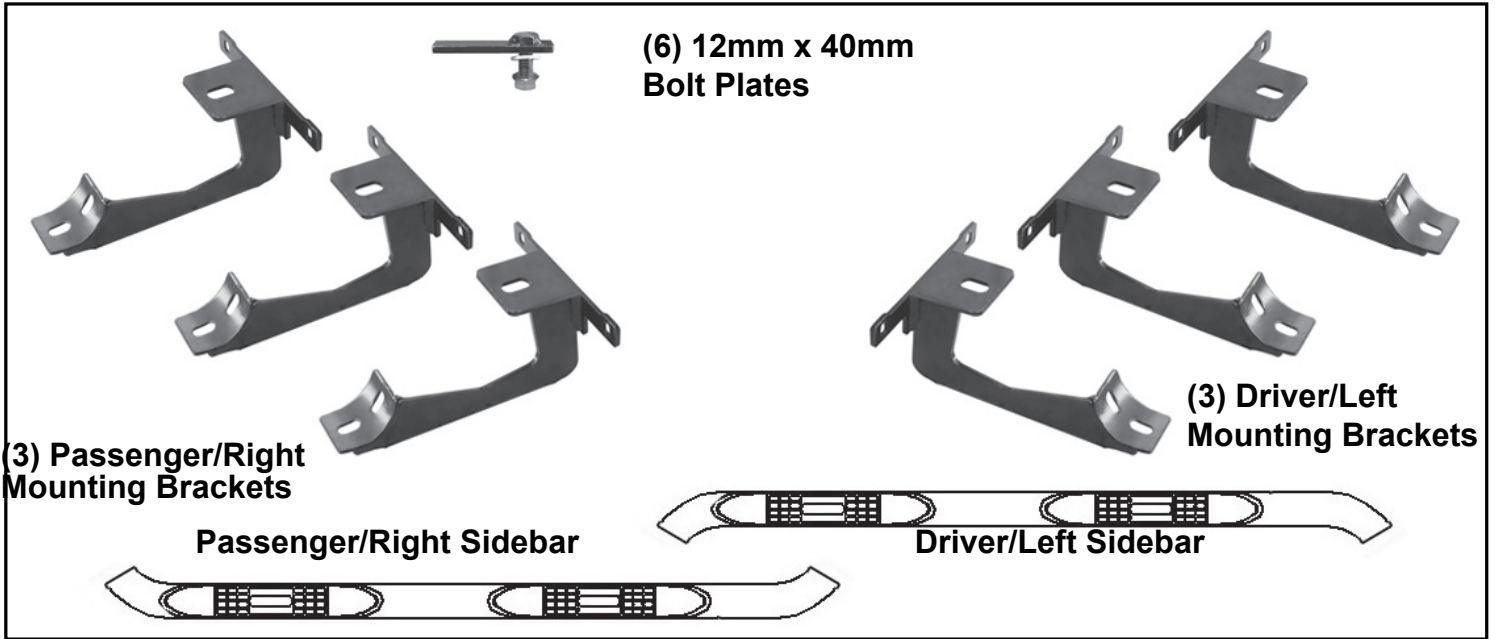


OMIX-ADA, Inc.

460 HORIZON DR. SUITE 100 | SUWANEE, GA 30024 | PHONE: 770-614-6101 | FAX: 770-614-6069 | info@omix-ada.com

Part #11594.03

'11-16 Jeep Grand Cherokee Side Bars



Components

- | | | | |
|-------------------------------------|-----|-------------------------------------|------|
| 1. Driver/Left Sidebar | (1) | 8. 12mm Serrated Flange Nuts | (6) |
| 2. Passenger/Right Sidebar | (1) | 9. 8-1.25mm x 25mm Hex Bolts | (12) |
| 3. Driver/Left Mounting Bracket | (3) | 10. 8mm x 24mm x 2mm Flat Washers | (12) |
| 4. Passenger/Right Mounting Bracket | (3) | 11. 8mm Lock Washers | (12) |
| 5. 12-1.75mm x 40mm Bolt Plates | (6) | 12. 6-1mm x 25mm Hex Bolts | (12) |
| 6. 12mm Plastic Retainers | (6) | 13. 6mm x 18mm x 1.6mm Flat Washers | (24) |
| 7. 12mm x 24mm x 2.5mm Flat Washers | (6) | 14. 6mm Lock Nuts | (12) |

OMIX-ADA® TECHNICAL SUPPORT

PHONE: M-F 8am - 5pm EST 1-800-449-6649 | EMAIL: techsupport@omix-ada.com

FOR WARRANTY INFORMATION VISIT: www.Omix-Ada.com



OMIX-ADA, Inc.

460 HORIZON DR. SUITE 100 | SUWANEE, GA 30024 | PHONE: 770-614-6101 | FAX: 770-614-6069 | info@omix-ada.com

'11-16 Jeep Grand Cherokee Side Bars

Remove contents from box. Verify all parts are present. Read instructions carefully before starting installation. Assistance is highly recommended. Excludes SRT8 and Trailhawk.

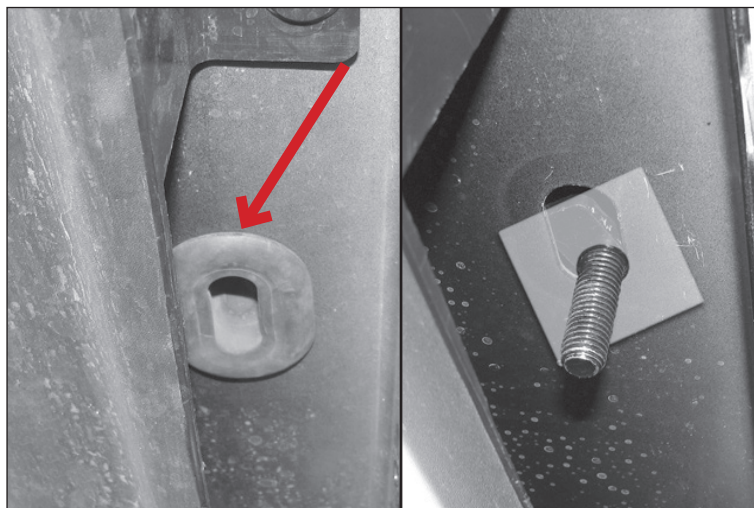
1. If wiring harness attached behind the pinch weld is present, remove hex nuts and drop harness down.



2. Remove rubber plug filling oval hole in bottom of rocker panel in front of two front holes in pinch weld.

3. Partially thread 12mm Plastic Retainer onto 12mm Bolt Plate.

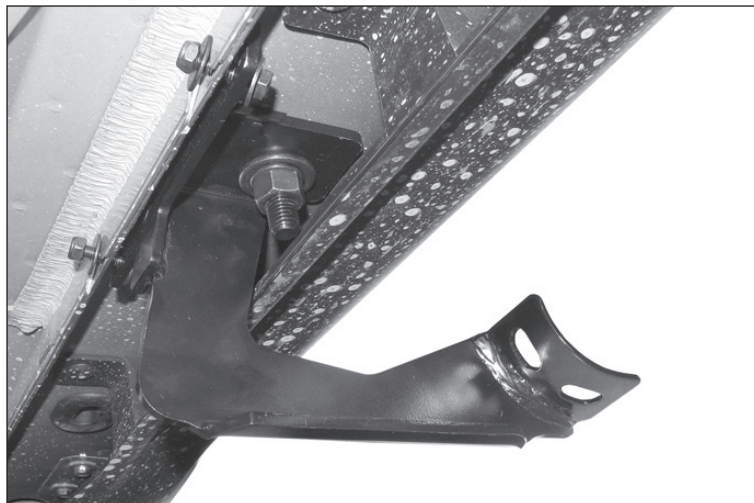
4. Insert Bolt Plate into hole and rotate 90-degrees to go across slot. Thread Plastic Retainer rest of way down Bolt Plate and tight against body panel.



5. Attach Mounting Bracket to Bolt Plate at pinch weld with 12mm Flat Washer, 12mm Flange Nut, 6mm x 25mm Hex Bolt, 6mm Flat Washer, and 6mm Nylon Lock Nut (Figures 6 & 7).

NOTICE Insert 6mm Hex Bolts with Flat Washers through the back of pinch weld

6. Repeat steps 2-5 for Center and Rear Brackets.





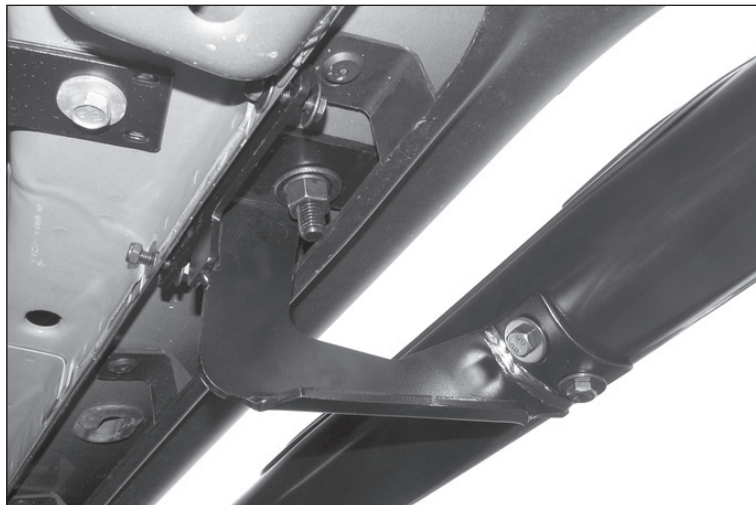
OMIX-ADA, Inc.

460 HORIZON DR. SUITE 100 | SUWANEE, GA 30024 | PHONE: 770-614-6101 | FAX: 770-614-6069 | info@omix-ada.com

'11-16 Jeep Grand Cherokee Side Bars

7. Place Side Bar on Mounting Brackets and secure with 8mm x 25mm Hex Bolts, 8mm Lock Washers, and 8mm Flat Washers. Do not fully tighten.

8. Adjust and level Sidebar. Tighten all hardware. Reinstall wire harness if required.



9. Repeat Steps 2 – 8 for second Sidebar.

10. Do periodic inspections to installation to ensure all hardware is secure and tight.



To protect your investment, wax this product after installing. Regular waxing is recommended to add a protective layer over the finish. Do not use any type of polish or wax that may contain abrasives that could damage the finish.

For stainless steel: Aluminum polish may be used to polish small scratches and scuffs on the finish. Mild soap may be used also to clean the Running Boards.

For gloss black finishes: Mild soap may be used to clean Running Boards.