



PART NUMBER: 11596.11  
 PRODUCT: Nerf step  
 APPLICATION: 97-06 TJ Jeep

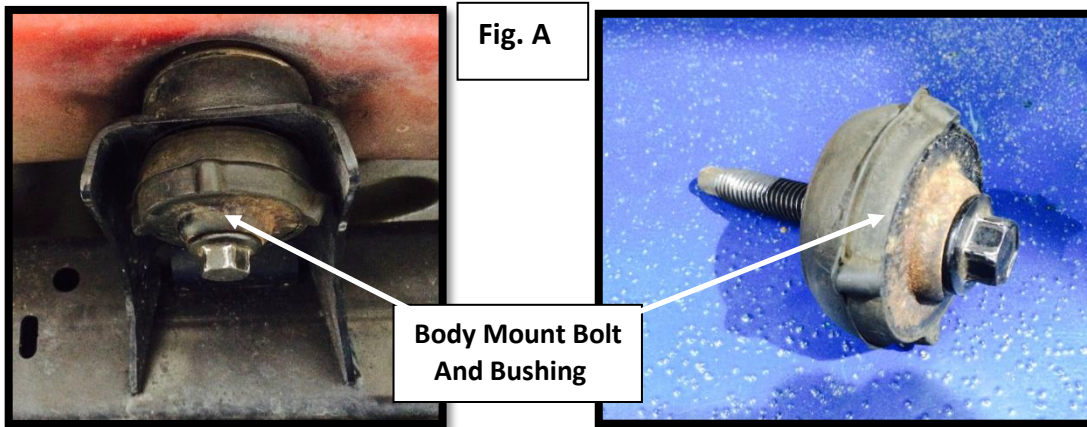
460 HORIZON DR. | SUWANEE, GA 30024 | PHONE: 770-614-6101 | FAX: 770-614-6069 | www.omix-ada.com

PARTS INCLUDED:	QTY
Driver Side Step	1
Passenger Side Step	1
<b>Uses Factory Hardware</b>	



## INSTRUCTIONS:

**Step 1:** Starting with the driver side, remove the three body mount bolts with bushings. and set aside. *Fig. A*



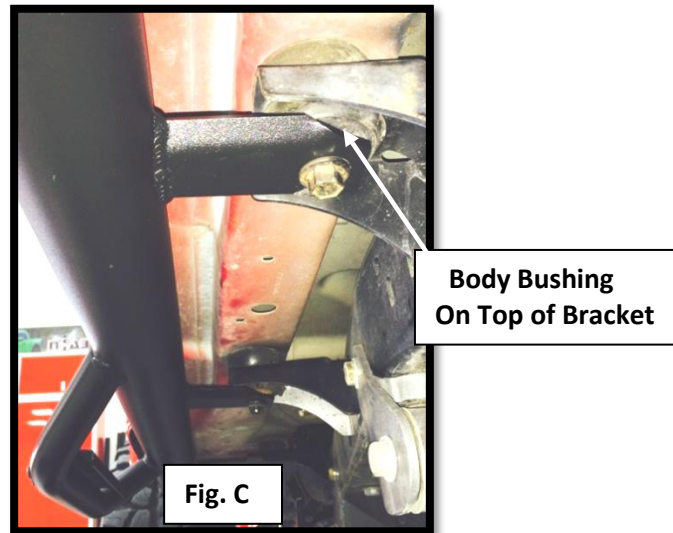
**Step 2:** Next, install the factory body bolts and bushings into the Nerf-steps center and rear bracket with the bushing on top of the mount creating an assembly. *Fig. B*



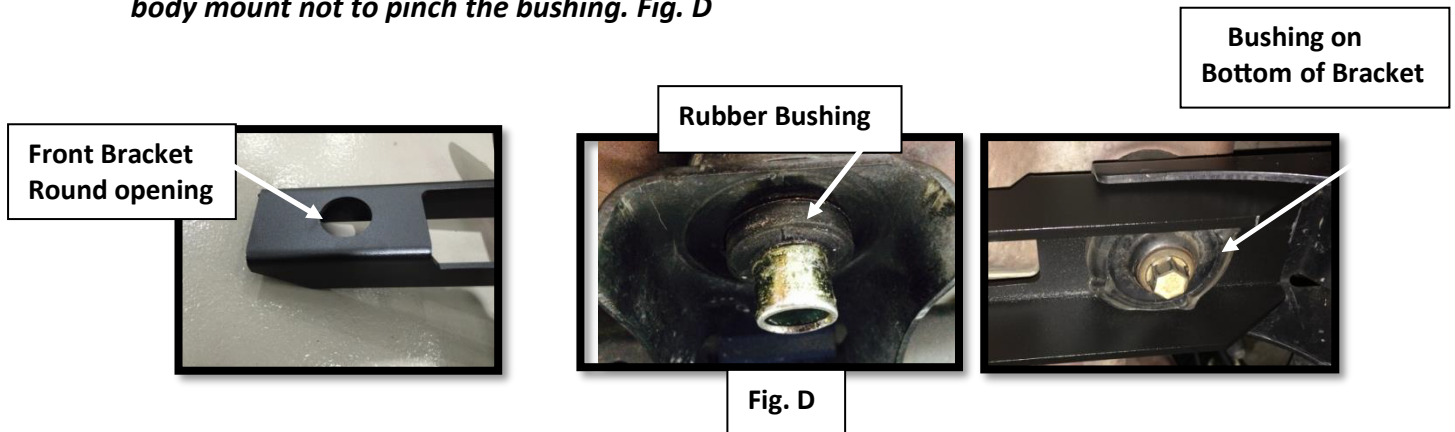
OMIX-ADA® TECHNICAL SUPPORT

PHONE: M-F 8am - 5pm EST 1-800-449-6649 | TICKET: webmaster@omixsupport.com

**Step 3:** Carefully raise step up into position aligning the brackets with the factory mounts and thread the bolts loosely. *Fig. C*



**Step 4:** Next, install the front body bolt and bushing and loosely tighten... **NOTE:** *Be sure the round opening in the step bracket fits around the upper body bushing and set s flush with body mount not to pinch the bushing. Fig. D*



**Step 5:** Tighten all hardware to factory specs starting with the center bracket then front and rear.

**Step 6:** Repeat steps 1-4 with passenger side. **NOTE:** *Check all factory hardware periodically for tightness to ensure safety and longevity of steps.*