



# INSTALLATION INSTRUCTIONS

## JEEP 2007-Current JK Hood Lock #292

Call (970) 564-1762 for Technical Support

Please read and fill out the enclosed warranty registration card to activate your warranty.

### PARTS CHECKLIST

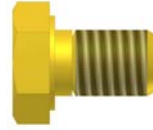


#1 Hood Lock

### SHIPPING PACKAGE CHECKLIST



#3.1 - (2) 5/16-18 x 1/2"  
THREAD CUTTING BOLTS



#3.2 - (2) 5/16-18 x 1/2"  
BOLTS

### TOOLS NEEDED

- 1/2" socket and wrench
- Body Trim tool

## ATTENTION:

- ***THIS HOOD LOCK WAS DESIGNED FOR A STOCK OEM VEHICLE, ANY MODIFICATIONS MADE TO THE GRILLE, RADIATOR, ETC MAY AFFECT THE FIT.***

### PLEASE READ ALL INSTRUCTIONS THOROUGHLY BEFORE STARTING INSTALLATION.

1. IMPORTANT! Make sure the vehicle is parked on a flat surface, placed in park, and the emergency brake is activated.
2. Raise the vehicle hood. Using a body trim tool, pry up the center head on each of the (6) OEM push-pin retainers along the top of the #4.2 OEM plastic grille, and remove the (6) push-pin retainers. Pulling the grille carefully but firmly forward, un-clip the (6) OEM metal spring clips along the bottom of the grille. **\*\*UNPLUG THE OEM TURN SIGNAL/MARKER LIGHTS ON BOTH SIDES OF THE VEHICLE.** Remove the grille from the vehicle. Refer to your vehicles factory service manual for additional instructions on removing the OEM grille.
3. Using a body trim tool, pry the (2) push-pin retainers near the center of the radiator bar which are supporting the OEM wire harness to the #4.1 OEM radiator support. This will facilitate the installation of the #1 Hood Lock.
4. Install the #3.1 Thread Cutting Bolts in the pre-existing (2) mounting holes along the top of the #4.1 OEM radiator support. This will cut the threads for these holes. Remove the #3.1 Thread Cutting Bolts.

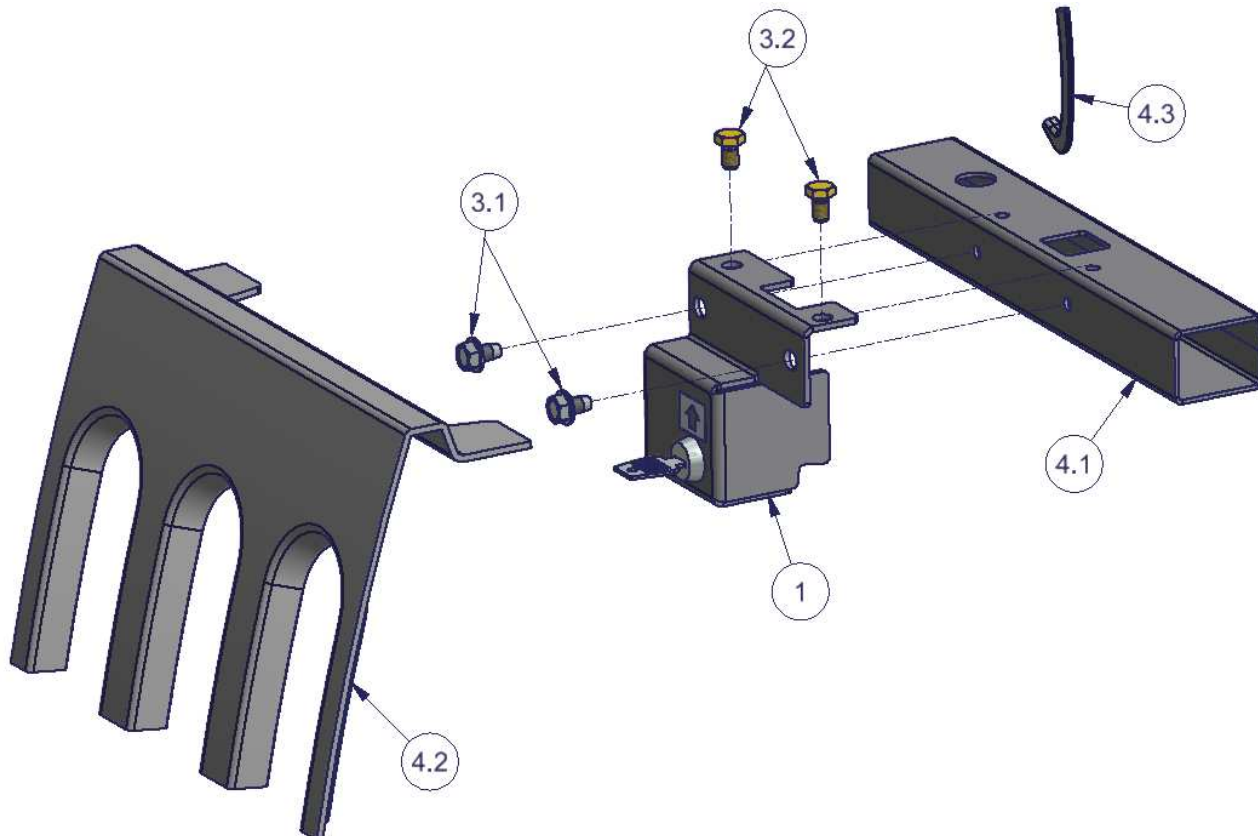
**\*\*NOTE: DO NOT OVER TIGHTEN THE BOLTS OR YOU MIGHT STRIP THE THREADS WHICH WERE CUT INTO THE #4.1 RADIATOR SUPPORT.**

5. Install the #1 Hood Lock onto the #4.1 OEM radiator support and fasten at the front mounting holes with the #3.1 Thread Cutting Bolts. Tighten fasteners. (Figure 1)
6. Install the #3.2 bolts into the top mounting holes in the #1 Hood Lock and the threaded holes in the #4.1 radiator support. Tighten fasteners. (Figure 1) **\*\*BE SURE TO USE THE #3.2 BOLTS AT THE TOP OF THE RADIATOR SUPPORT FOR CLEARANCE TO THE #4.2 OEM GRILLE.**
7. With the #1 Hood Lock in the un-locked position (key turned counter-clockwise), lower the vehicle hood and allow the #4.3 OEM hood latch to engage the #4.1 radiator support. Lock the #1 Hood Lock (turn key clockwise) and test the lock has engaged the #4.3 hood latch securely by pulling firmly up on the vehicle hood. You should not be able to lift the vehicle hood. Unlock and raise the hood again.

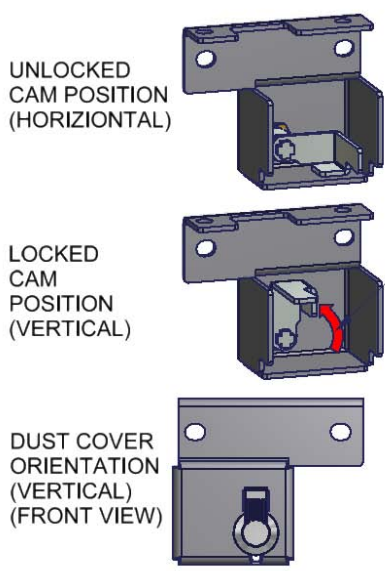
**\*\*Note:** It may be necessary to push the vehicle hood downward when locking the #1 Hood Lock in order for the lock cam to align with the #4.3 hood latch.

8. Re-install the OEM wire harness by re-inserting the OEM push-pins removed in step 3.
9. Re-install the #4.2 OEM grille by fastening the lower spring clips and securing with the upper push-pin retainers. Reconnect the wiring plugs for both turn signal/marker lights.

**FIGURE 1**



**Optional #091 Dust Cover installation & Cam orientation**



**NOTE:**  
WHEN LOOKING AT THE FRONT OF THE HOOD LOCK, THE KEY TURNS CLOCKWISE TO THE LOCKED POSITION!!

- #091 Dust Cover installation steps
1. Remove the small nut on the back of the camlock using a 1/2" socket and wrench and remove the cam. Be careful not to pull the lock core out of the camlock housing.
  2. Remove the large nut on the backside of the camlock using a 7/8" socket and wrench and pull the camlock out of the bracket.
  3. Insert the dust cover on the camlock as illustrated.
  4. Refasten the camlock to the bracket with the large nut.
  5. Insert the cam and check the rotation as illustrated.
  6. Tighten the small nut holding the cam to the camlock (DO NOT OVER TIGHTEN OR CAM OPERATION WILL BE STIFF).
  7. Test the cam operation.