

SPEC-D *Tuning*

1999-2000 HONDA CIVIC HALO PROJECTOR HEADLIGHTS INSTALLATION INSTRUCTIONS



If you experience any difficulties that the instruction did not cover, Please seek local auto shop for advise. Please wear protection before you work on your vehicle.

An assistant is helpful when removing the front bumper.

Please be careful while working with the bumper or body part to avoid scratching.

Do not make direct contact with the halogen bulb or the wire assembly until the unit has cooled down after use.

TOOLS AND SUPPLIES REQUIRED

10mm Socket
¼" Drive Ratchet
Phillips Screwdriver
Trim Pad Remover

If your Headlight is Halo type, you also need:

Wire Stripper
Wire Crimper
4 Blue Quick Splice Wire Connectors
4 Blue Male Quick Wire Connectors
4 Blue Female Quick Wire Connectors
2 Red Wires (8 inch)
2 Black Wires (8 inch)

Product Part Numbers:

2LHP-CV99-TM

2LHP-CV99JM-TM

2LHP-CV99B-TM

2LHP-CV99JMB-TM



1999-2000 HONDA CIVIC HALO PROJECTOR HEADLIGHTS INSTALLATION INSTRUCTIONS



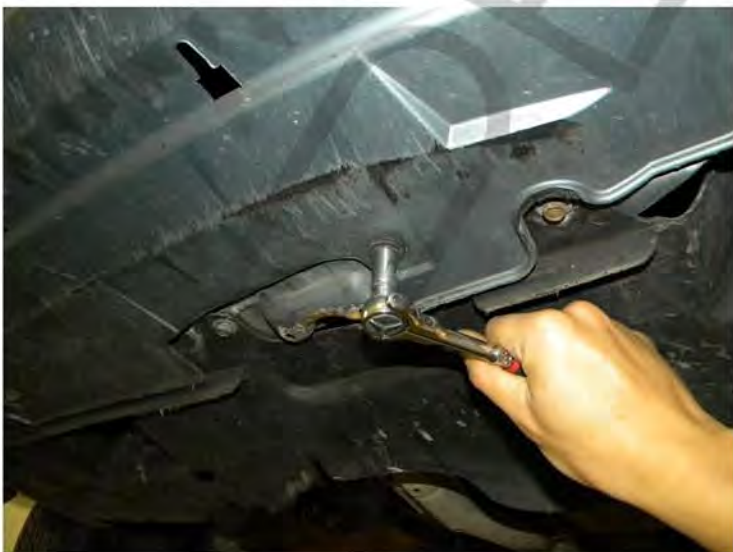
If you experience any difficulties that the instruction did not cover, Please seek local auto shop for advise.
Please wear protection before you work on your vehicle.
An assistant is helpful when removing the front bumper.
Please be careful while working with the bumper or body part to avoid scratching.
Do not make direct contact with the halogen bulb or the wire assembly until the unit has cooled down after use.



1. Under the front bumper



2. Unscrew (2) phillip head screw



3. Remove (2) 10mm bolts



4. Unscrew a phillips head screw



5. Remove (7) Clips from the top of the front bumper



6. Pull the sides of the bumper



7. Remove the front bumper



8. Bolt locations above headlight



9. Remove (2) 10mm bolts



10. Inner 10mm bolt location



11. Remove the 10mm bolt on the inner end of the headlight



12. Outer 10mm bolt location



13. Remove the 10mm bolt



14. Pull out the headlight



15. Unplug the light harness



16. Unplug the light socket



17. Plug in the light socket



18. Connect the light harness

Please see the Halo and L.E.D installation instruction
If your headlights don't have HALO or L.E.D. You can skip it



19. Place the projector headlight



20. Tighten two 10mm bolts



21. Tighten the second 10mm bolts



22. Tighten the 10mm bolt on the outer corner of headlight'



17. Plug in the light socket



18. Connect the light harness

Please see the Halo and L.E.D installation instruction
If your headlights don't have HALO or L.E.D. You can skip it



19. Place the projector headlight



20. Tighten two 10mm bolts



21. Tighten the second 10mm bolts



22. Tighten the 10mm bolt on the outer corner of headlight'



23. Tighten the 10mm bolt on the inner corner of the headlight



24. Replace the front bumper



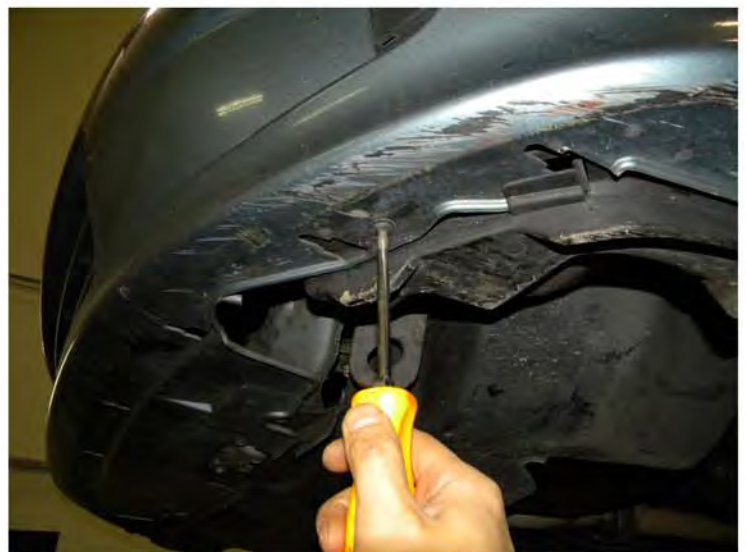
25. Replace the (7) clips



26. Screw in the phillips head screw



27. Tighten (2) 10mm bolts under front bumper



28. Screw in two phillips head screws under the front bumper



29. Please repeat the steps from 1 to 28 for the opposite side



30. The installation is now complete

SPEC TUNING