

SPEC-D *Tuning*

2008-2011 BMW 1 SERIES PROJECTOR HEADLIGHTS INSTALLATION INSTRUCTIONS

*If you experience any difficulties that the instructions did not cover, Please seek assistance at local automotive shop.

*Please wear protection before you work on your vehicle.

*An assistant is useful when removing the front bumper from your vehicle.

*Please be cautious when working with the bumper or any parts belonging to the vehicles' body prevent scratching.

*Do not make direct contact with the halogen bulb or the wire assembly until the unit has cooled down after use.



TOOLS AND SUPPLIES REQUIRED

¼" Drive Ratchet

T30 Socket

6" Extension

T30 Wrench

10mm Socket

8mm Socket

If your Headlight is Halo type, you also need:

Wire Stripper

Wire Crimper

4 Blue Quick Splice Wire Connectors

4 Blue Male Quick Wire Connectors

4 Blue Female Quick Wire Connectors

2 Red Wires (8 inch)

2 Black Wires (8 inch)

Product Part Numbers:

2LHP-E8708JM-TM

2LHP-E8708-TM



BMW 1 SERIES PROJECTOR HEADLIGHTS INSTALLATION INSTRUCTIONS

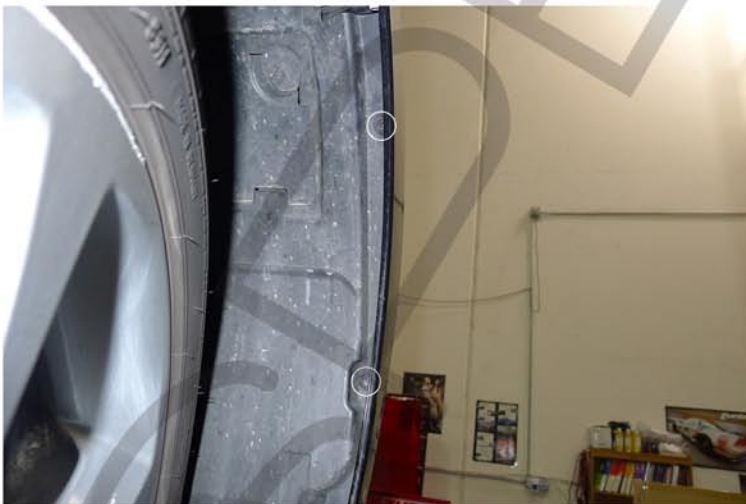
*If you experience any difficulties that the instructions did not cover, Please seek assistance at local automotive shop.
*Please wear protection before you work on your vehicle.
*An assistant is useful when removing the front bumper from your vehicle.
*Please be cautious when working with the bumper or any parts belonging to the vehicles' body prevent scratching.
*Do not make direct contact with the halogen bulb or the wire assembly until the unit has cooled down after use.



1. (7) 8mm screws location



2. Remove the (7) 8mm screws



3. (2) 8mm screws location



4. Remove the (2) 8mm screws



5. Remove the 8mm screw



6. Remove the weather strip



7. (4) T30 bolts location



8. Remove the (4) T30 bolts



9. Remove the front bumper



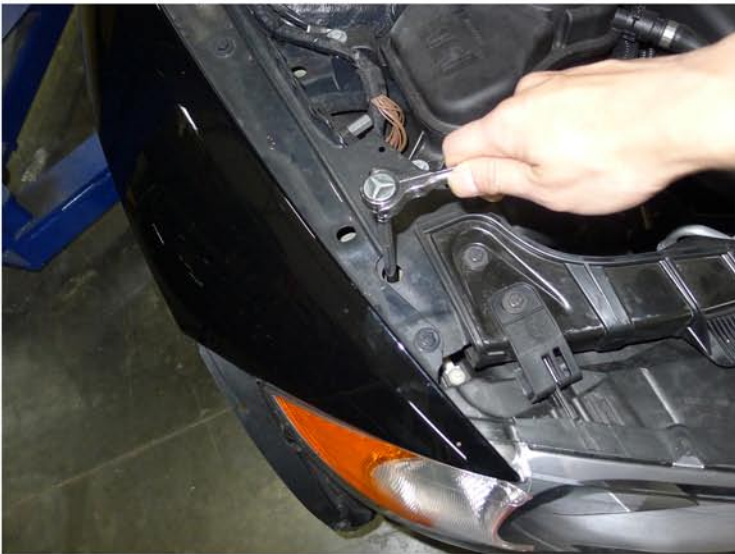
10. Disconnect the fog light harness



11. Remove the 10mm bolt



12. Remove the T30 bolt



13. Remove the T30 bolt



14. Remove the T30 bolt



15. Remove the T30 bolt



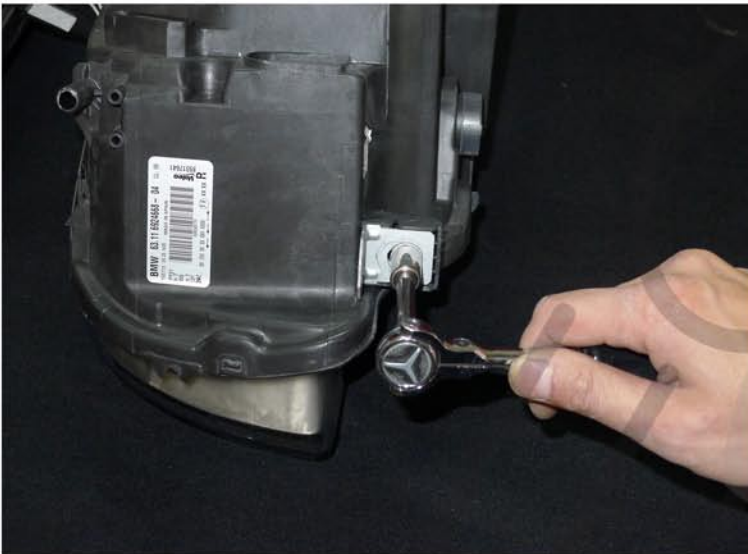
16. Remove the 8mm screw



17. Remove the headlight



18. Disconnect the headlight harness



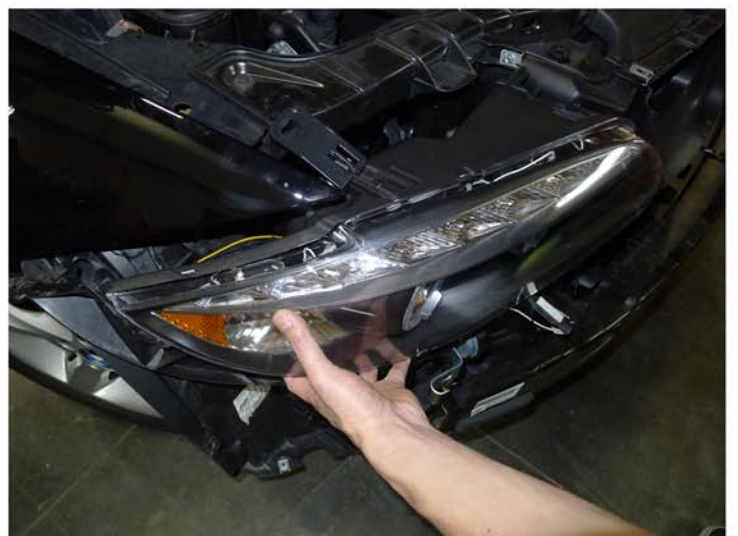
19. Remove the 10mm bolt and the metal bracket



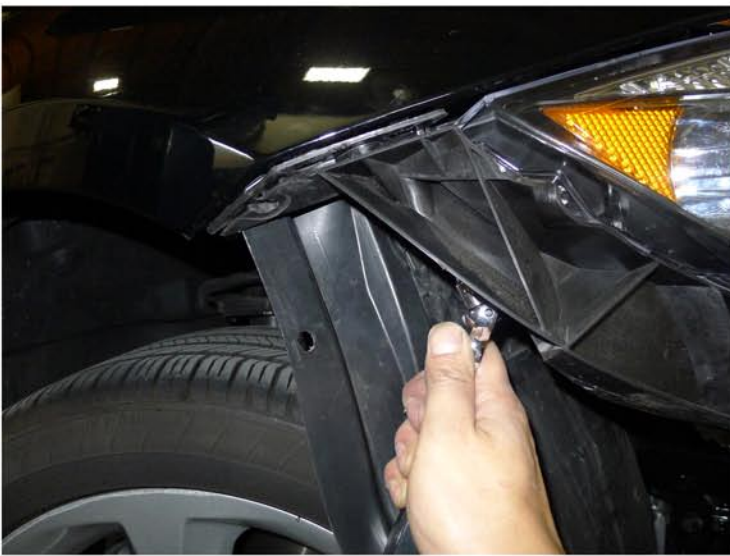
20. Place the metal bracket on the new light and tighten 10mm bolt



21. Connect the headlight harness to the new headlight
Please see the Halo and L.E.D installation instructions.
If your headlights don't have HALO or L.E.D. you can skip it



22. Place the new headlight in the stock location



23. Tighten the 8mm screw



24. Tighten the T30 bolt



25. Tighten the T30 bolt



26. Tighten the T30 bolt



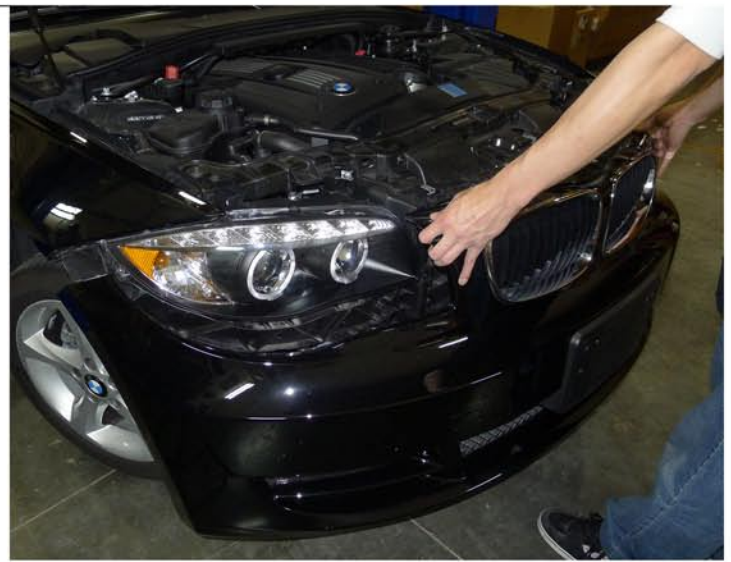
27. Tighten the 10mm bolt



28. Tighten the T30 bolt



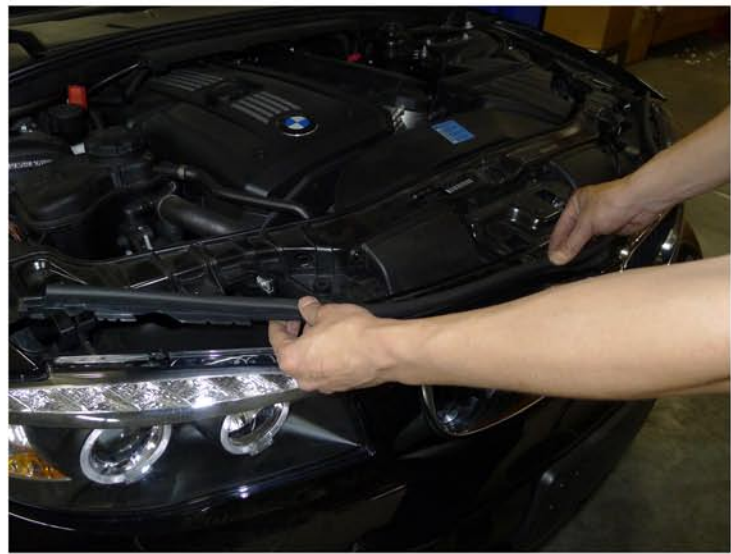
29. Connect the fog light harness



30. Replace the front bumper



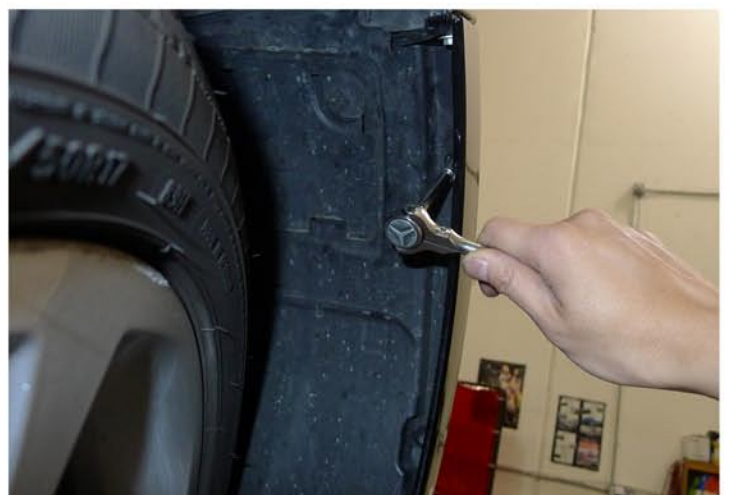
31. Tighten the (4) T30 bolts



32. Replace the weather strip



33. Tighten the 8mm screw



34. Tighten the (2) 8mm screws



35. Tighten the (7) 8mm screws
Please repeat the steps in order from 1 to 35 for the opposite side



36. The installation is now complete

