

Installation & CARE

2014 TOYOTA TUNDRA PROJECTOR HEADLIGHTS INSTALLATION INSTRUCTIONS

BEFORE INSTALLATION:

- If you experience any difficulties that the instructions did not cover, please seek assistance at local a automotive shop.
- Please wear protection before you work on any vehicle.
- An assistant is useful when removing the front bumper from your vehicle.
- Please be cautions when working with the bumper or any parts belonging to the vehicles's body to prevent scratching.
- Do not make direct contact with the halogen bulbs or the wire assembly until the unit has cooled down after use.

TOOLS AND SUPPLIES REQUIRED

1/4" Ratchet	Plastic Fastener Remover	10 mm socket	
			

PRODUCT NUMBER

2LHP-TUN14-RS
2LHP-TUN14JM-RS
2LHP-TUN14G-RS



LET'S START THE INSTALLATION



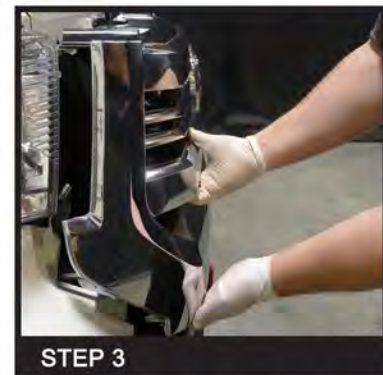
STEP 1

Remove the two plastic fastener clips and four 10mm bolts



STEP 2

Lift up the top part of the front grille



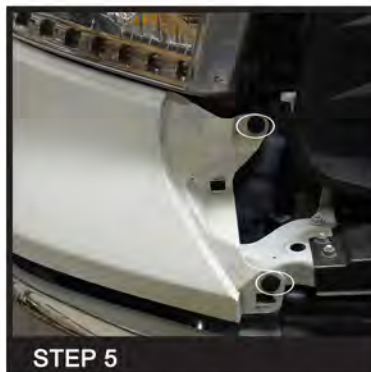
STEP 3

Pull out the front grille from the bottom



STEP 4

Remove the front grille



STEP 5

Remove the two plastic fastener clips



STEP 6

Pull out to remove the extension panel



STEP 7

Remove one 10mm headlight mounting bolt at the bottom



STEP 8

Remove the two 10mm headlight mounting bolts at the top



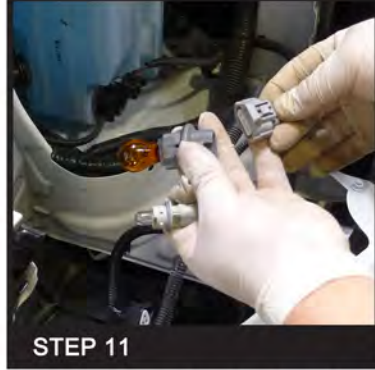
STEP 9

Disconnect the headlight harness



STEP 10

Remove the factory headlight housing



STEP 11

Remove the driving light and signal light socket from the car harness



STEP 12

Remove the light bulbs from the driving light and signal light socket



STEP 13

Install the signal light socket to the new headlights housing



STEP 14

Install the driving light to the new headlights housing



STEP 15

Connect the headlight harness



STEP 16

Seat the new headlight assembly in place



STEP 17

Reinstall the two 10mm headlight mounting bolts at the top



STEP 18

Reinstall the one 10mm headlight mounting bolt at the bottom



STEP 19

Reinstall the extension panel



STEP 20

Reinstall the two plastic fastener clips.



STEP 21

Please repeat the steps from 5 to 20 for the opposite side



STEP 22

Reinstall the front grille



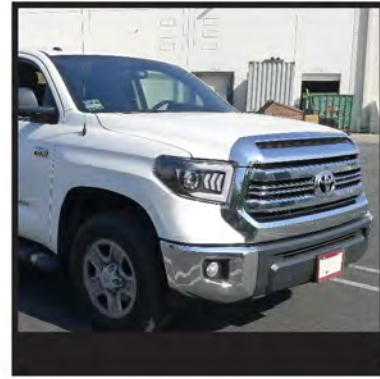
STEP 23

Reinstall the two plastic fastener clips and four 10mm bolts



STEP 24

Close the hood. The installation is now complete



Installation & CARE

2014 TOYOTA TUNDRA PROJECTOR HEADLIGHTS INSTALLATION INSTRUCTIONS

BEFORE INSTALLATION

- If you experience any difficulties that the instruction did not cover, please seek assistance at local automotive shop.
- Please wear protection before you work on any vehicle.
- An assistant is useful when removing the front bumper from your vehicle.
- Please be cautious when working with the bumper or any parts belonging to the vehicles's body to prevent scratching.
- Do not make direct contact with the halogen bulbs or the wire assembly until the unit has cooled down after use.

2014 TOYOTA TUNDRA PROJECTOR HEADLIGHTS INSTALLATION INSTRUCTIONS

High/Low Beam
Adjustment Screws

