



# INSTALL INSTRUCTIONS

## Spartan FRONT BUMPER

Product Range : 3161XF

Application : 2016 + CHEVROLET 1500

## I WARNING

Read the instructions completely before beginning installation. Before tightening bolts, drilling or cutting where required, check to make sure there are no obstructions such as brake, fuel or electrical lines which may be damaged. Also keep in mind this is an after-market product and MAY require minor shimming and/or trimming, reaming, etc. for proper fit. Road Armor is not responsible for any damages to vehicle.

## i IMPORTANT NOTICE

- Be sure to inspect and test fit your product to ensure proper fitment before having it coated, painted, bed lined, etc.
- Road Armor will not be responsible for the cost of coating your unit if any problems with fit or finish are not noted and addressed beforehand.

## SAFETY FIRST!

- FOLLOW ALL INSTRUCTIONS, YOUR SAFETY AND THE SAFETY OF OTHERS IS MOST IMPORTANT.
- WEAR APPROPRIATE EYE PROTECTION AND EXERCISE CAUTION WHEN DRILLING / CUTTING

## REQUIRED TOOLS

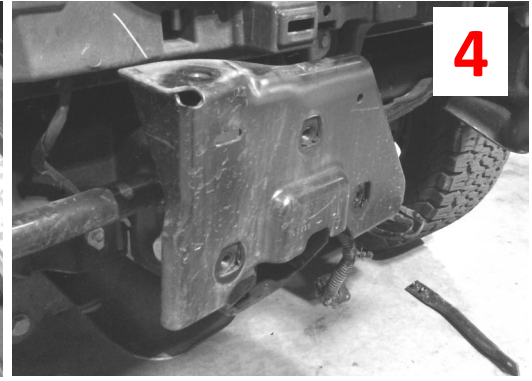
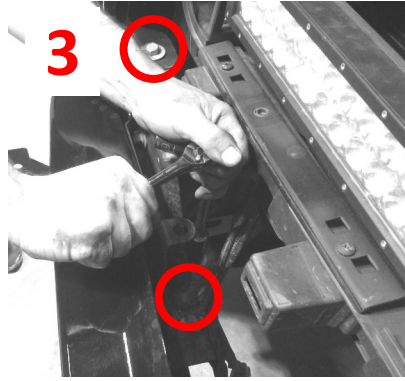
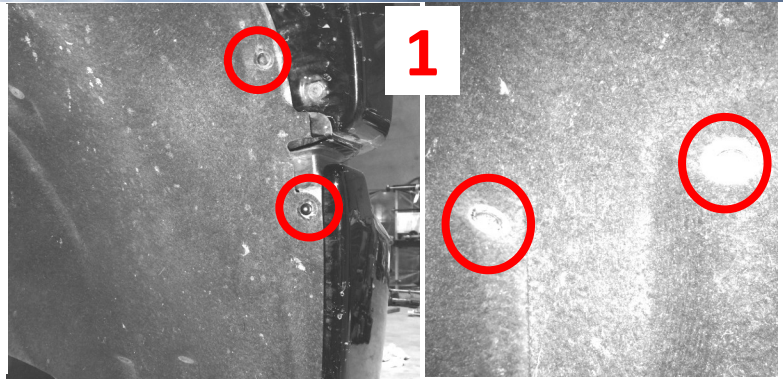
SAE & Metric Sockets and Wrenches

Cutting tool

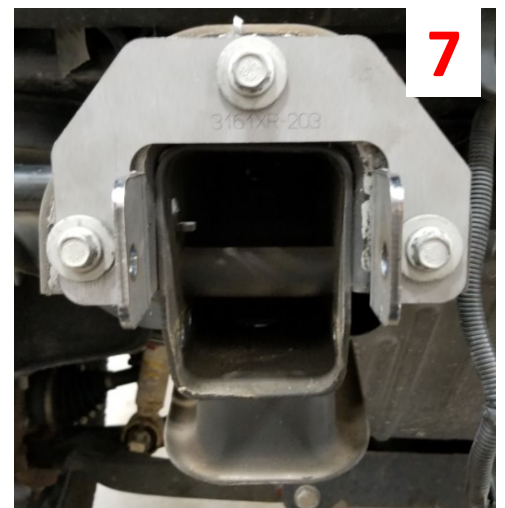
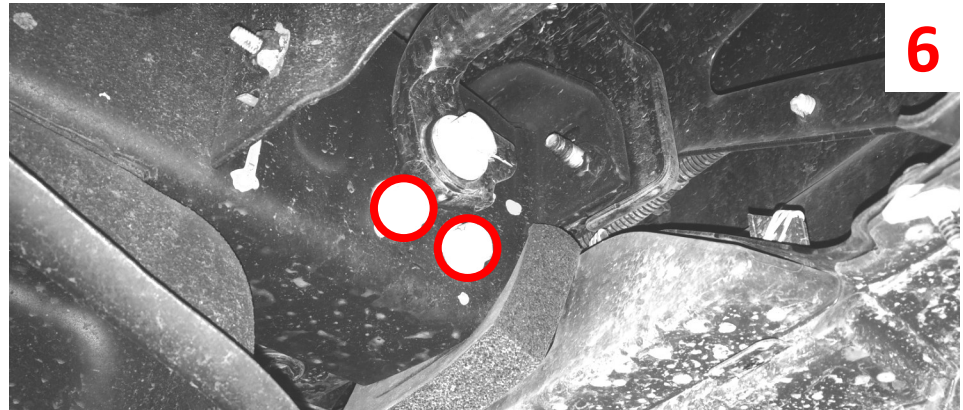
## INCLUDED HARDWARE

<ul style="list-style-type: none"> <li>4 3/8 POLYCARBONATE PUSH PLUG</li> <li>2 1/4"-20 x 3/4" Bolt</li> <li>4 1/4" x 0.625" OD Flat Washer</li> <li>2 1/4" Split Lock Washer</li> <li>14 1.5" Single Bolt Tab (ZINC)</li> <li>14 1/2" Flat Washer</li> <li>14 1/2" Split Lock Washer</li> <li>14 1/2" Hex Nut</li> </ul>	<ul style="list-style-type: none"> <li>4 1" Plug</li> <li>6 1/2" Retainer Nut</li> <li>2 1/4" Hex Nut</li> </ul>
---	--

- 1 Remove the fender well screws
- 2 Pulling from the bottom, pop away the grill slowly. It is held in by clips
- 3 Remove the bumper bolts so the bumper can slide forward (Both sides)
- 4 Remove frame plate to gain access to the tow hooks



- 5 Loosen the bodyguard mount.



- 6 Remove the factory tow hooks by removing the two bolts on either side.
- 7 Attach bracket to frame horn using factory hardware.

- 8** Attach secondary frame bracket hardware with 1/2" hardware. 2 bolt tabs through the frame and 2 through the first bracket. Leave finger tight for ability to adjust bumper. Tighten the bodyguard mount.
- 9** Install accessories into the bumper before installation including sensors and lights.
- 10** Insert the 1/2" bolt tabs into the bumper and secure using the retainer nuts.
- 11** Place bumper onto truck and secure using the 1/2" hardware. Leave finger tight.
- 12** Adjust the bumper front to rear first and tighten the 4 bolts on the frame. Then, adjust the left/right and up/down and tighten the frame to bumper hardware.
- 13** Re-install grill.
- 14** Trim the inner fender liners to your preference and enjoy.

