

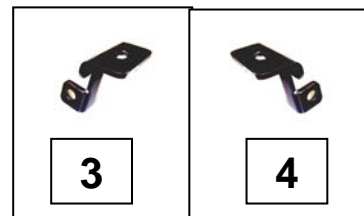
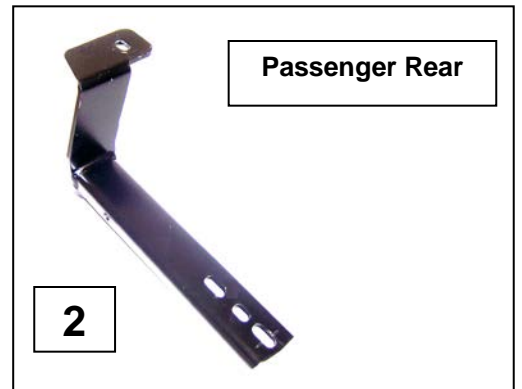
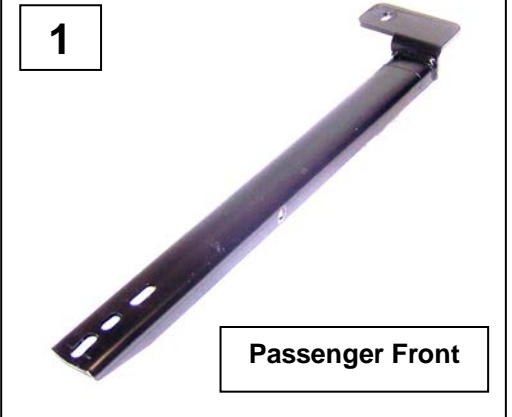
Installation Instructions

Wide Channel Brackets Part # BRK-390895

2011-2013 Kia Sportage

Parts List

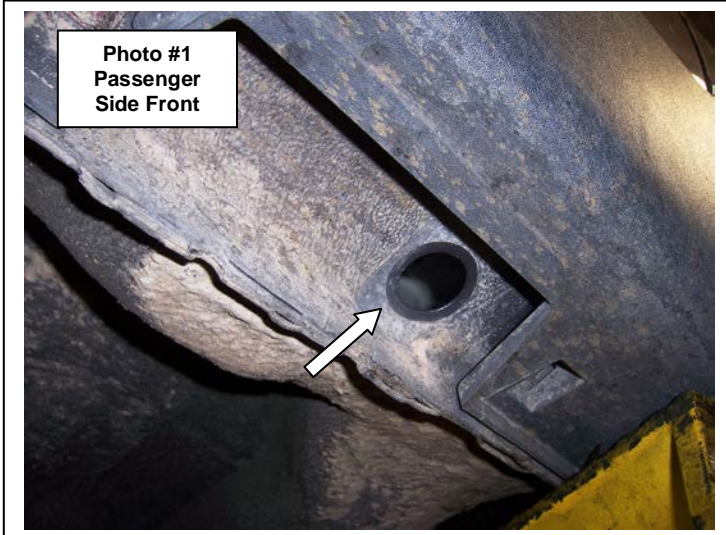
Item	Qty	Part #	Description	Torque
1	1 Set	390890AA	Front Bracket	-
2	1 Set	390890BA	Rear Bracket	-
3	2	390894CA	Passenger Front & Driver Rear Auxiliary Bracket	-
4	2	390894CA	Driver Front & Passenger Rear Auxiliary Bracket	-
5	4	390900CA	5/16" x 1" T-Bolt	-
6	2	3713312	5/16" x 1 1/2" T-Bolt	-
7	8	-	5/16" Square Head Bolt	11Ft. Lbs.
8	4	-	5/16" x 1" Hex Bolt	11Ft. Lbs.
9	18	-	5/16" Lock Washer	-
10	18	-	5/16" Flat Washer	-
11	10	-	5/16" Hex Nut	11Ft. Lbs.
12	2	-	3/8" Flat Washer	-
13	2	-	3/8" Lock Washer	-
14	2	-	3/8" Hex Nut	30 Ft. Lbs.
15	2	370200AA	3/8" x 1 1/2" T-Bolt	-



Read the installation instructions completely and verify that all of the parts listed are accounted for. If you have defective, missing or damaged parts or need assistance, please contact Us for fast, friendly customer service at: 1-866-444-43818.

Installation

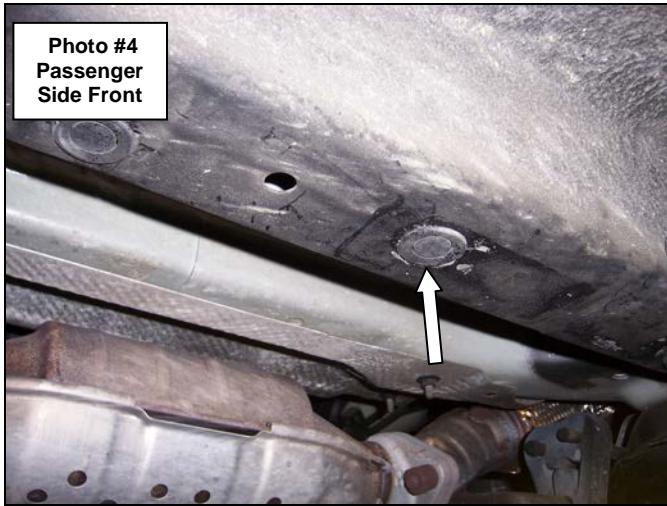
Step-1 Begin the installation with the passenger side of the vehicle. Locate the plastic plug in the rocker panel at the front of the vehicle. Remove the plastic plug and install (1) 5/16" x 1" t-bolt in the rocker panel, (**Photo #1 & #2**).



Step-2 Attach the passenger side front auxiliary bracket to the rocker panel using the 5/16" x 1" t-bolt, (1) 5/16" flat washer, (1) 5/16" lock washer and (1) 5/16" hex nut, (**Photo #3**). Leave the hex nut loose for final adjustment.

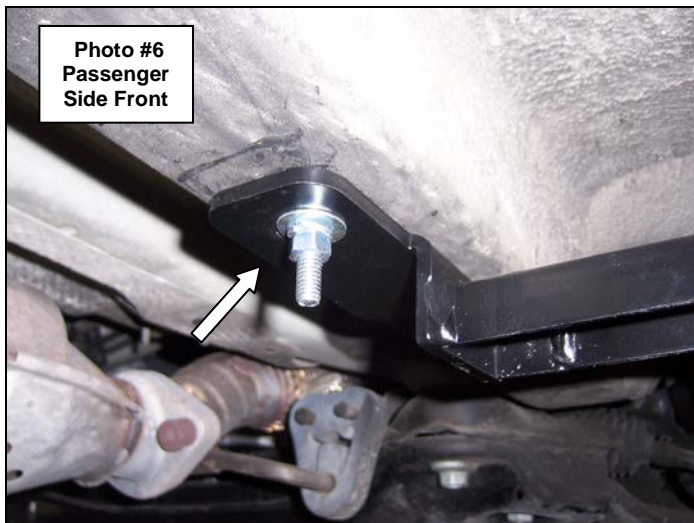


Step-3 Locate the plastic plug in the frame toward the front of the vehicle, (**Photo #4**). Remove the plastic plug and install (1) 5/16" x 1 1/2" t-bolt in the rocker panel, (**Photo #5**).



Step-4 Attach the passenger side front bracket to the bottom of the frame using the 5/16" x 1 1/2" t-bolt, (1) 5/16" flat washer, (1) 5/16" lock washer and (1) 5/16" hex nut, (**Photo #6**). Leave the hex nut loose for final adjustment.

Step-5 Attach the opposite end of the front bracket to the auxiliary bracket using (1) 5/16" x 1" hex bolt, (1) 5/16" flat washer, (1) 5/16" lock washer and (1) 5/16" hex nut, (**Photo #7**). Leave the hex nut and bolt loose for final



Step-6 Locate the plastic plug in the rocker panel at the rear of the vehicle, (**Photo #8**). Remove the plastic plug and install (1) 5/16" x 1" t-bolt in the rocker panel.

Step-7 Attach the passenger side rear auxiliary bracket to the rocker panel using the 5/16" x 1" t-bolt, (1) 5/16" flat washer, (1) 5/16" lock washer and (1) 5/16" hex nut, (**Photo #9**). Leave the hex nut loose for final adjustment.

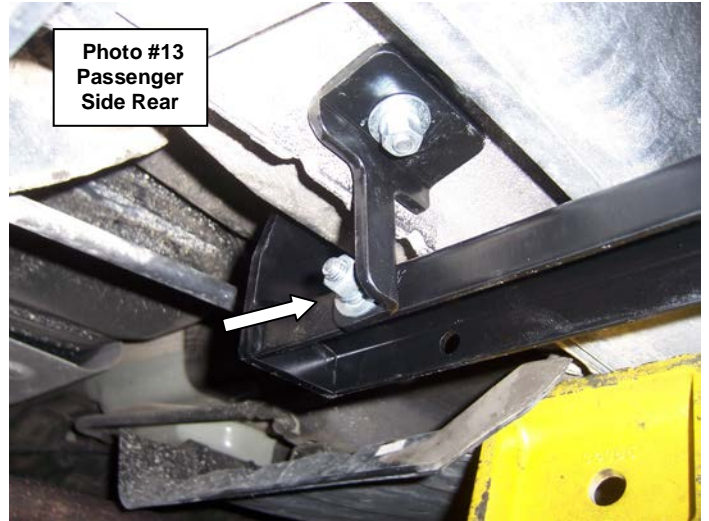


Step-8 Locate the obround hole in the frame toward the rear of the vehicle, (**Photo #10**) and install (1) 3/8" x 1 1/2" t-bolt in the frame (**Photo #11**).



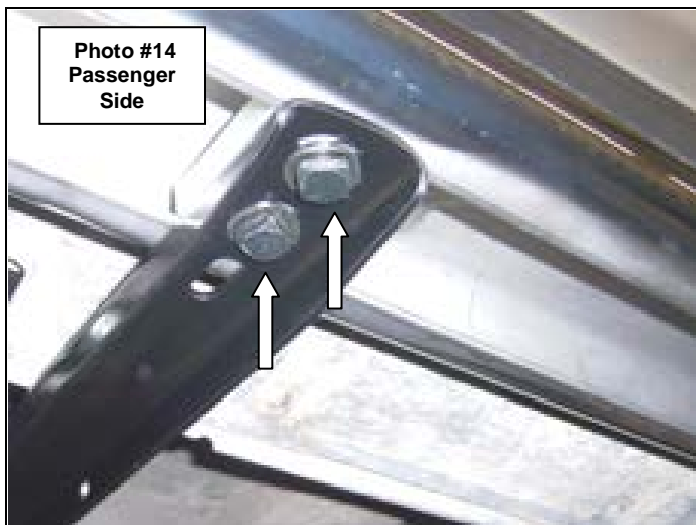
Step-9 Attach the passenger side rear brackets to the bottom of the frame using the 3/8" x 1 1/2" t-bolt, (1) 3/8" flat washer, (1) 3/8" lock washer and (1) 3/8" hex nut, (**Photo #12**). Leave the hex nut loose for final adjustment.

Step-10 Attach the opposite end of the rear bracket to the auxiliary bracket using (1) 5/16" x 1" hex bolt, (1) 5/16" flat washer, (1) 5/16" lock washer and (1) 5/16" hex nut, (**Photo #13**). Leave the hex nut and bolt loose for final adjustment.



Step-11 Set the driver side, side bar on top of the brackets and align the side bar with the vehicle. Position the clamp brackets inside the opening of the side bar and align the clamp bracket threads with the slot holes in the brackets. Attach the side bar to each of the brackets using the clamp bracket, (2) 5/16" x 1" square head bolts, (2) 5/16" lock washers and (2) 5/16" flat washers, (**Photo #14**). Leave the square head bolts loose for final adjustment.

Step12 Re-align the side bar with the vehicle and tighten all side bar and bracket nuts and bolts.



Step-13 Repeat the above installation steps to install the driver side brackets and side bar.

Remember to periodically check and retighten all nuts and bolts.