



baja designs®
The Scientists of Lighting

Chevy Colorado/GMC Canyon 30" Grille Kit Installation Instructions

44-7597



185 Bosstick Boulevard • San Marcos • CA • 92069

Phone 760-560-2252 • Fax 760-560-0383

info@bajadesigns.com • www.bajadesigns.com



baja designs[®]
The Scientists of Lighting

LIMITED LIFETIME WARRANTY

Baja Designs proudly offers a LIFETIME WARRANTY against manufacturer's defect on all the products that we manufacture.

These are comprehensive warranties; other than the exclusions below – you're covered. If your LED or HID bulb burns out, you're covered. Additionally, cutting off our connector or changing your lenses does not automatically void your warranty.

Exclusions:

Installation errors, abuse, misuse or crash damage. You must be the original owner of the product and can supply proof of purchase.

Baja Designs manufactures its own products as well as resells products manufactured by others. Baja Designs makes no express or implied warranties on products not manufactured by Baja Designs including without limitation any warranties or merchantability and fitness for a purpose. We will however, pass on all warranties made by the manufacturer, who has sole responsibility for performing such warranties.

Baja Designs will pay the freight if your product is less than 90 days old, otherwise defective products must be returned to Baja Designs, Inc., freight prepaid. At our option, we will repair or replace items in question and return them at no charge. If the identical product is no longer available, we will replace with a similar product of equal value. Baja Designs Inc. will not be responsible for any indirect or consequential damages in connection with defective merchandise. Items purchased through a Baja Designs authorized dealer must be returned through the dealer. Only available on LED auxiliary lights and product must be in sellable condition at MSRP. Product that has been damaged in any way after the original purchase date will be excluded from this guarantee.

Indemnification:

Buyer hereby acknowledges off-roading, racing and driving at night are dangerous activities and that the products and/or supplies purchased from Baja Designs are used in an inherently dangerous activity that may endanger life and limb; and in no event shall the seller, or seller's heirs and assigns, be held liable for consequential damages, nor shall seller's liability on any claim for damages arising out of or connected with the sale, delivery, or use of purchased products and/or supplies exceed the purchase price of the products and/or supplies.



baja designs
The Scientists of Lighting

1.) Remove the upper grille bolts *Figure 1*.

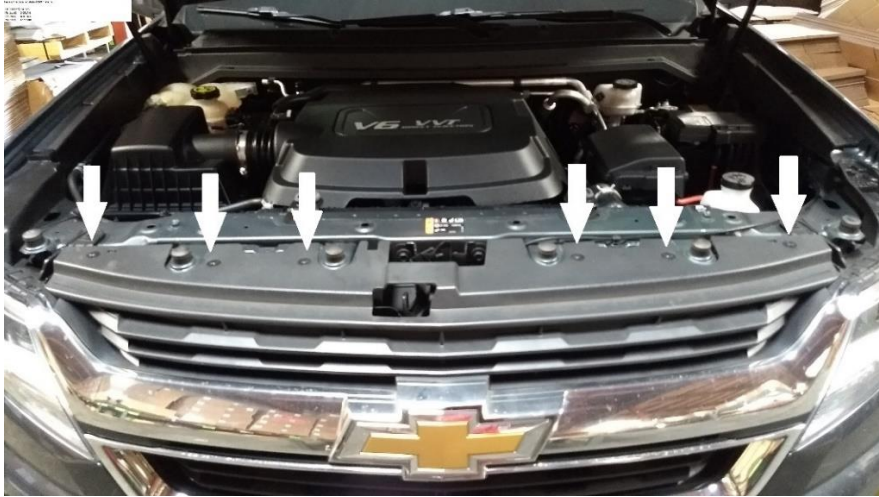


Figure 1

2.) Remove the inner fender bolts on driver and passenger sides *Figure 2*.



Figure 2



baja designs
The Scientists of Lighting

3.) Remove the bolts under truck on the bottom of bumper on driver and passenger sides *Figure 3*.

Note: If equipped, it may be necessary to remove the fender flares and front bumper fascia as well.

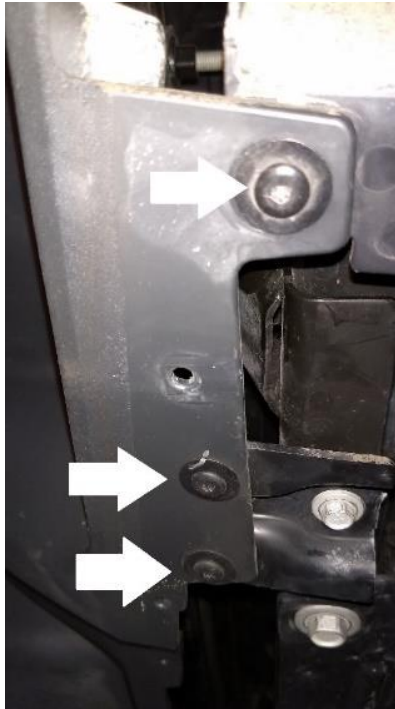


Figure 3

4.) Remove the bolts holding the triangular plastic support/splash guard to the metal tab on driver and passenger sides and remove both plastic supports *Figure 4*.



Figure 4

5.) Disconnect fog lamps and remove the 3 bolts attaching the bumper to the fender on driver and passenger sides *Figure 5*.

Note: These 6 bolts are behind the passenger and driver side fender and can be accessed by pulling back the previously detached inner fender a small amount.



baja designs
The Scientists of Lighting



Figure 5

- 6.) Remove the 2 bolts attaching the bumper/grille to the front of truck and gently free the spring clips still holding the bumper assembly to remove Figure 6.

Note: These 2 bolts can be accessed by inserting a socket and extension of the correct length through the grille.



Figure 6

- 7.) Trim the vertical ribs of the bumper as flush as possible with dykes or snips and file the remainder flat Figure 7.



baja designs
The Scientists of Lighting



Figure 7

8.) Remove the 4 bolts retaining the crash bar *Figure 8*.



Figure 8

9.) Insert driver and passenger side light brackets behind plastic air dam, align crash bar holes with the brackets' holes and frame holes then tighten the factory bolts *Figure 9*.



baja designs
The Scientists of Lighting

Note: The light brackets are located between the crash bar and the frame after the light brackets are inserted through the air dam.



Figure 9

10.) Reinstall the bumper assembly with a couple bolts to hold it in place and tighten the two center bolts before the light is installed. Leave the inner fender bolts out for access to the wiring.

Note: The 2 bumper/grille bolts removed in Step 6 must be fully tightened prior to installing the light to have access to them.

11.) Install included protective sheathing onto the light's power cord, zip tie cord to bracket using the provided zip tie and slot by the bend on the bracket, route wiring over the top of the bracket and through the back of the air dam up toward the factory harness *Figure 10*.

Note: This picture is only to illustrate the sheathing and correct wire routing as the bumper will be installed by this point.



baja designs
The Scientists of Lighting



Figure 10

- 12.) Install the light using the 5/8" long bolts and washers provided with the light.
- 13.) Route wire harness from the engine bay down to the light's power cord and attach before reassembling the truck as access will be limited once the inner fender is tightened *Figure 11*.

Note: Zip tie where necessary to keep wiring away from hot, moving or rotating components.



Figure 11

- 14.) Reassemble the truck in the reverse order of disassembly.
- 15.) Follow instructions included with the wire harness for final wiring procedures.

Note: Use only the hardware included with the light and kit. Kits are designed to work specifically and are for use with only Baja Designs lights.



baja designs®
The Scientists of Lighting