



INSTALL INSTRUCTIONS

Jeep JL Front Full-Width Bumper

5183XFXX

Application : 2018+ Jeep Wrangler JL

2020+ Jeep Gladiator JT

I WARNING

Read the instructions completely before beginning installation. Before tightening bolts, drilling or cutting where required, check to make sure there are no obstructions such as brake, fuel or electrical lines which may be damaged. Also keep in mind this is an after-market product and MAY require minor shimming and/or trimming, reaming, etc. for proper fit. Road Armor is not responsible for any damages to vehicle.

i IMPORTANT NOTICE

- Be sure to inspect and test fit your product to ensure proper fitment before having it coated, painted, bed lined, etc.
- Road Armor will not be responsible for the cost of coating your unit if any problems with fit or finish are not noted and addressed beforehand.

SAFETY FIRST!

- FOLLOW ALL INSTRUCTIONS, YOUR SAFETY AND THE SAFETY OF OTHERS IS MOST IMPORTANT.
- WEAR APPROPRIATE EYE PROTECTION AND EXERCISE CAUTION WHEN DRILLING / CUTTING

REQUIRED TOOLS

Metric and SAE Socket Sets and Wrenches

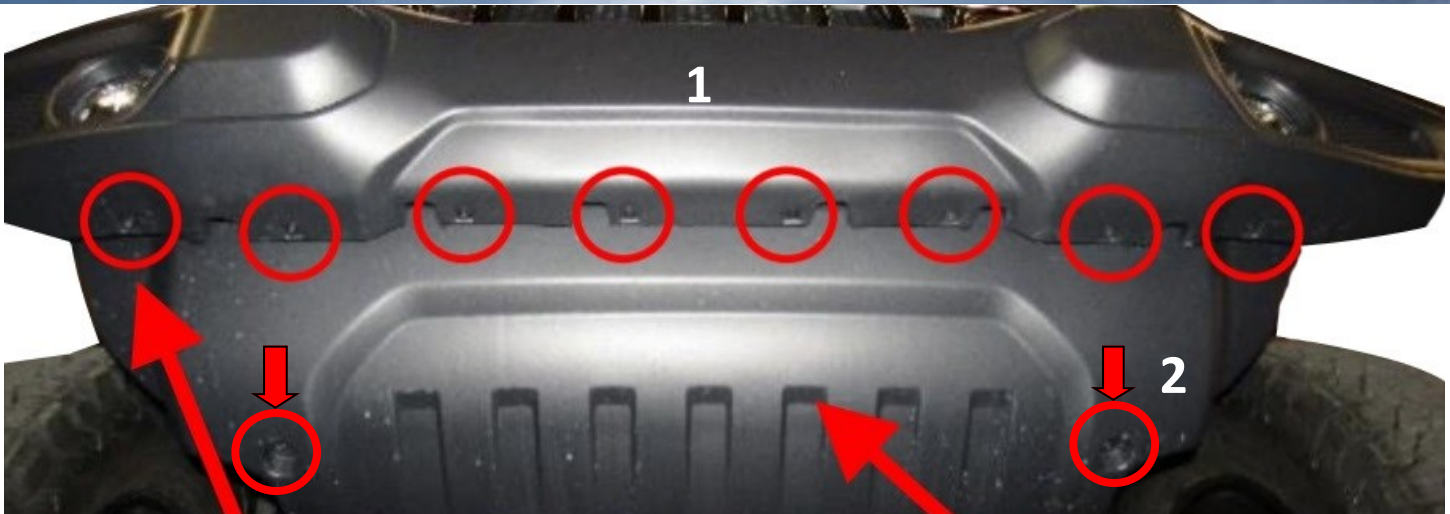
Torx bits and driver

Tape Measure

Painter Tape

INCLUDED HARDWARE

- | | |
|---|---|
| <p>6 1/4"-20 x 3/4" ASTM A307 Grade A Zinc Finish Hex Bolt</p> <p>6 1/4" x 0.625" OD Low Carbon Zinc Finish Steel SAE General Purpose Flat Washer</p> <p>6 1/4" Zinc Finish Medium Split Lock Washer</p> <p>6 1/4"-20 Zinc Finish Grade A Finished Hex Nut</p> <p>4 3/8 POLYCARBONATE PUSH PLUG</p> <p>8 1/2" Bolt 15/16" O.D. Zinc Pushnut Bolt Retainer</p> | <p>8 1.5" Single Bolt Tab (ZINC)</p> <p>8 1/2" Yellow Zinc Finish High Alloy Medium Split Lock Washer</p> <p>8 1/2" x 1.062" OD Thru-Hardened Yellow Zinc Finish Steel SAE General Purpose Flat Washer</p> <p>8 1/2"-13 Yellow Zinc Finish Grade 8 Finished Hex Nut</p> <p>8 1/4"-20 x 3/4" ASTM F879 Hex Drive Grade 18-8 Stainless Steel Button Socket Cap Screw</p> <p>8 1/4"-20 Zinc Finish Steel with External Tooth Lockwasher K-Lock Nut</p> |
|---|---|



1 Unscrew the eight (8) plastic screws in the center of the retainer clips securing the factory air dam

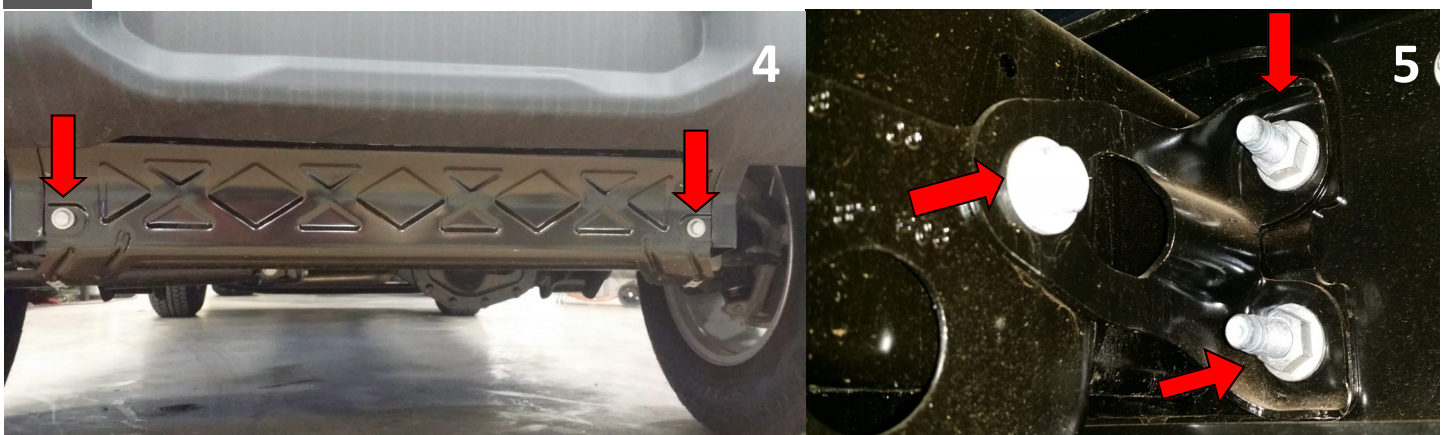
TIP If the screws just spin use a flathead screwdriver or small pry bar to pop them out.



2 Unscrew two (2) bolts on the bottom side of the front splash shield and remove.

3 Unplug main bumper harness from outside passenger frame rail.

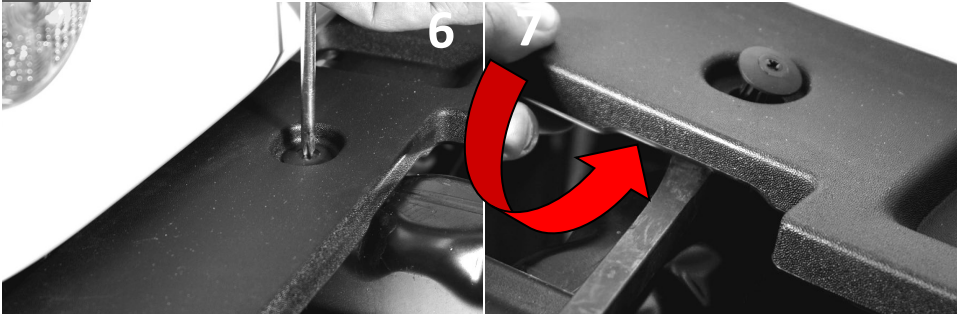
4 Unscrew two (2) bolts on the bottom side of the front skid and remove.



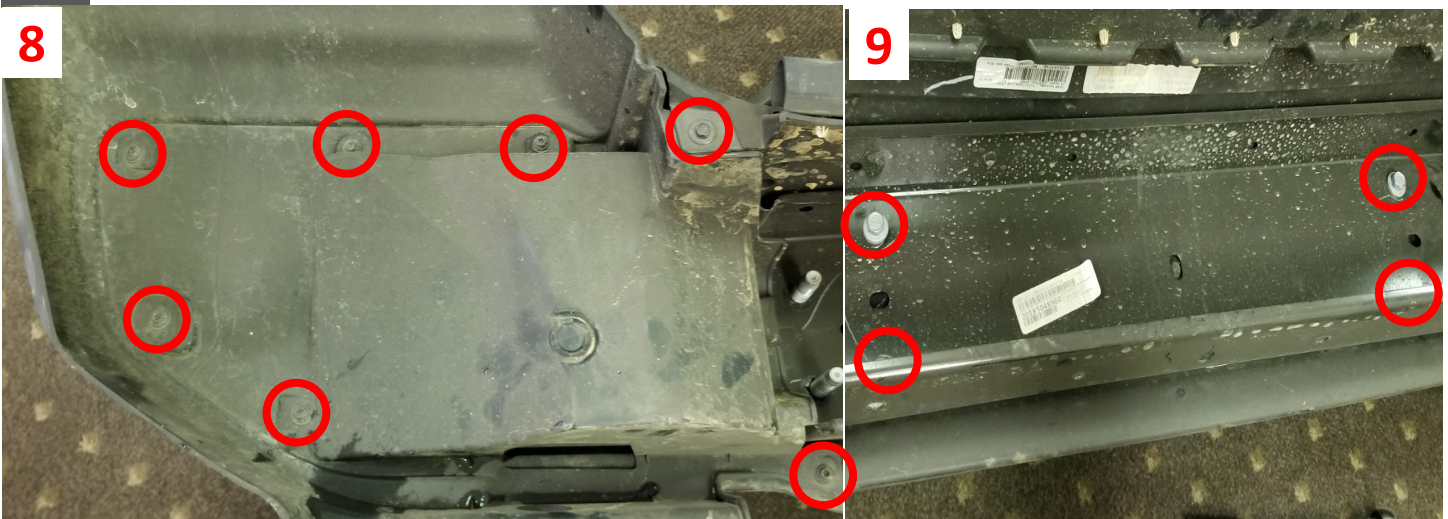
5 Remove the two nuts one bolt holding the factory bumper and stiffeners on, four (4) on each side of the frame using an 18mm socket and/or wrench. Keep ALL stiffeners for installing Road Armor Bumper.

6 Remove factory bumper and set aside.

7 Now remove the plastic top plate using a phillips screwdriver as in Steps 1 and 2. Again if the screw simply spins, employ a flathead screwdriver or small pry bar as shown.



8 Remove plastic covering on each side of the bumper using the torx bits and sockets.



9 Remove the 4 bolts in the middle of the bumper and remove interior cover.

10 Remove factory tow hooks.

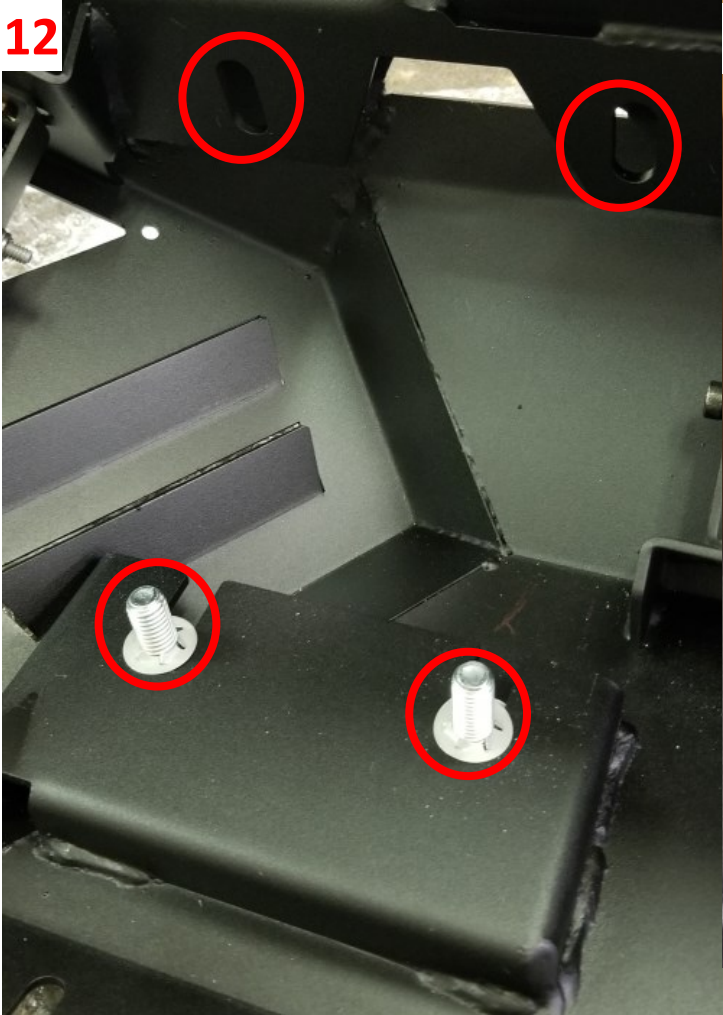
11 Install lighting options and Pre-Runner (if purchased) onto the Spartan bumper

(For light bars, use included L-brackets for proper light alignment: the L-brackets will need to be pointed in for space constraints.)



12 Install 1/2" bolt tabs into bumper (top and bottom) and secure with push nuts. The top bolts need to be adjust all the way up and the bottom bolts all the way down.

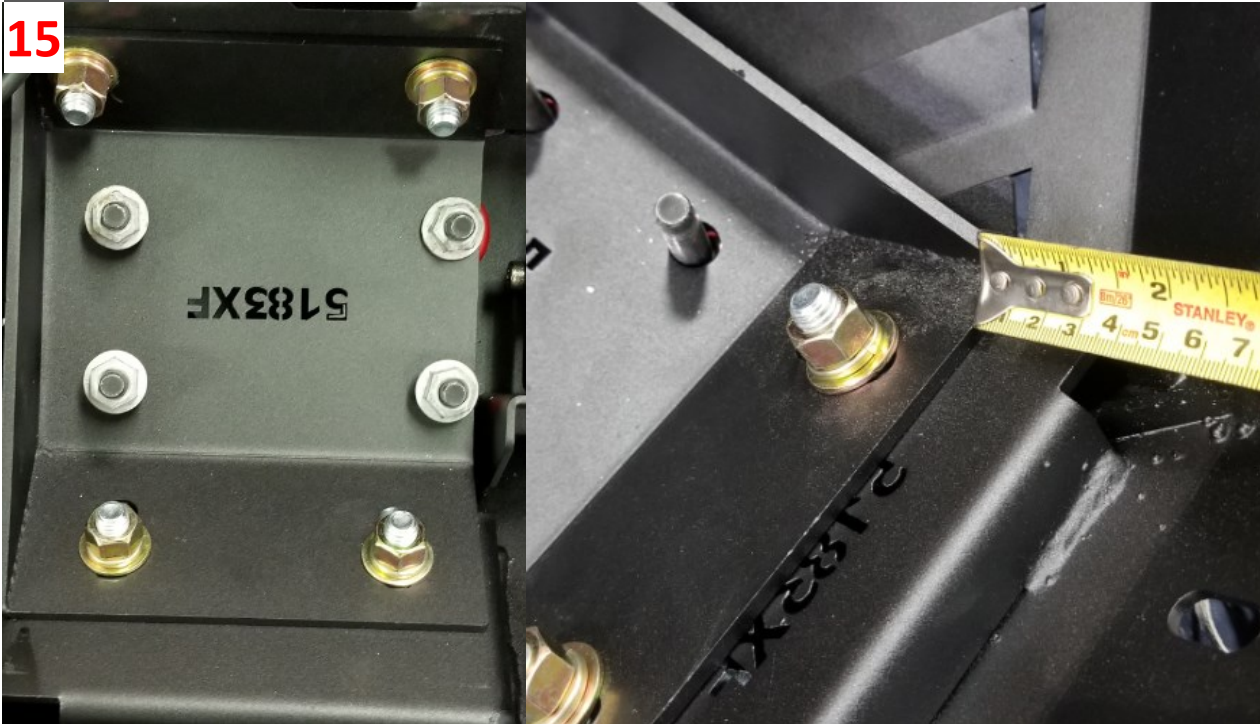
13 With painters tape, tape off the front of the tow hooks to prevent damaging the tow hooks coating during installation.



14 Place factory tow hook into mounting brackets.



- 15** Now place the brackets into the bumper. This is achieved by placing the tow hook through the hole of the bumper and aligning the top bolt first. Then, push the bracket onto the bottom bolts. (When putting the bracket onto the bottom bolts you may have to give it a slight push.)

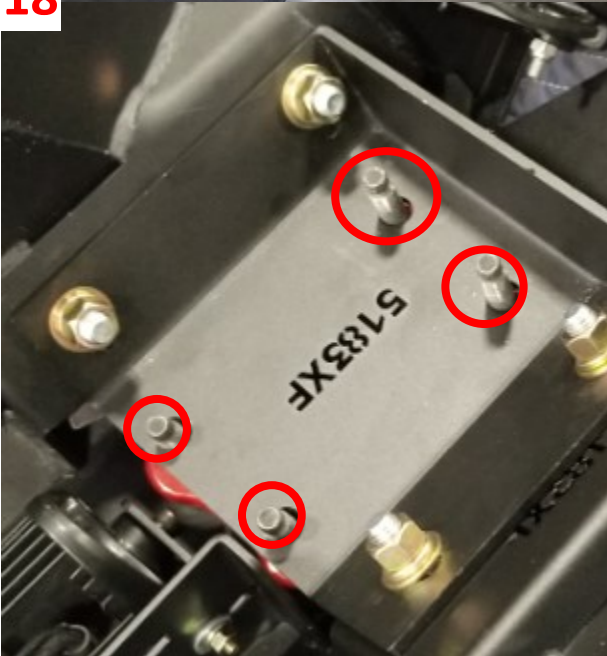


- 16** Install hardware onto the 1/2" bolt tabs. Place bracket flush with bumper on one side and tighten 1/2" hardware. (Make sure the top bolt tabs are in their up-most position and the bottom bolt tabs are in the lowest position.)
- 17** Measure from the bottom of the secured bracket to a fixed point of the bumper. Measure the other bolt on bracket in the same location and secure using the 1/2" hardware.

- 18** To install the bumper onto the truck the stock tow hooks will mount into their factory location. Putting the bumper onto the jeep will be a snug fit for the top bolt tabs. The bumper may need to be rocked back and forth slightly to achieve clearance.



18



- 19** Using the factory nuts, secure the bumper onto the Jeep. Wire lighting options.
If skid-plate was purchased install now.
Install 3/8" plug into the top of the bumper if Pre-Runner bar was not purchased.
Remove Painters tape from factory tow hooks.

20 Enjoy the new look of your Road Armor Spartan Series Bumper.

