



INSTALL INSTRUCTIONS

Application : 2018+ Jeep Wrangler JL

2020+ Jeep Gladiator JT

JL / JT FRONT INNER FENDER LINERS: 518LFF0Z

I WARNING

Read the instructions completely before beginning installation. Before tightening bolts, drilling or cutting where required, check to make sure there are no obstructions such as brake, fuel or electrical lines which may be damaged. Also keep in mind this is an after-market product and MAY require minor shimming and/or trimming, reaming, etc. for proper fit. Road Armor is not responsible for any damages to vehicle.

i IMPORTANT NOTICE

- Be sure to inspect and test fit your product to ensure proper fitment before having it coated, painted, bed lined, etc.
- Road Armor will not be responsible for the cost of coating your unit if any problems with fit or finish are not noted and addressed beforehand.

SAFETY FIRST!

- FOLLOW ALL INSTRUCTIONS, YOUR SAFETY AND THE SAFETY OF OTHERS IS MOST IMPORTANT.
- WEAR APPROPRIATE EYE PROTECTION AND EXERCISE CAUTION WHEN DRILLING / CUTTING

REQUIRED TOOLS

Metric and SAE Socket Sets and Wrenches

Drill & Unibit



INCLUDED HARDWARE

- (18) #10-24x1/2" Bolts
- (8) #10-24 Flange Nuts
- (10) #10-24 Panel Square Nuts
- (12) 1/4"x1" Self-Drilling Screw
- (6) 5/16"x1" Bolts
- (6) 5/16" Flange Nuts
- (1) PSG FENDER LINER MAIN
- (1) DVR FENDER LINER MAIN
- (1) PSG FENDER LINER LOWER
- (1) DVR FENDER LINER LOWER
- (2) LOGO BACKING PLATES



- 1
- 2
- 3
- 4

Using 8mm & 10mm sockets, remove bolts securing OEM fenders.

Remove two OEM push clips that secure fender liners

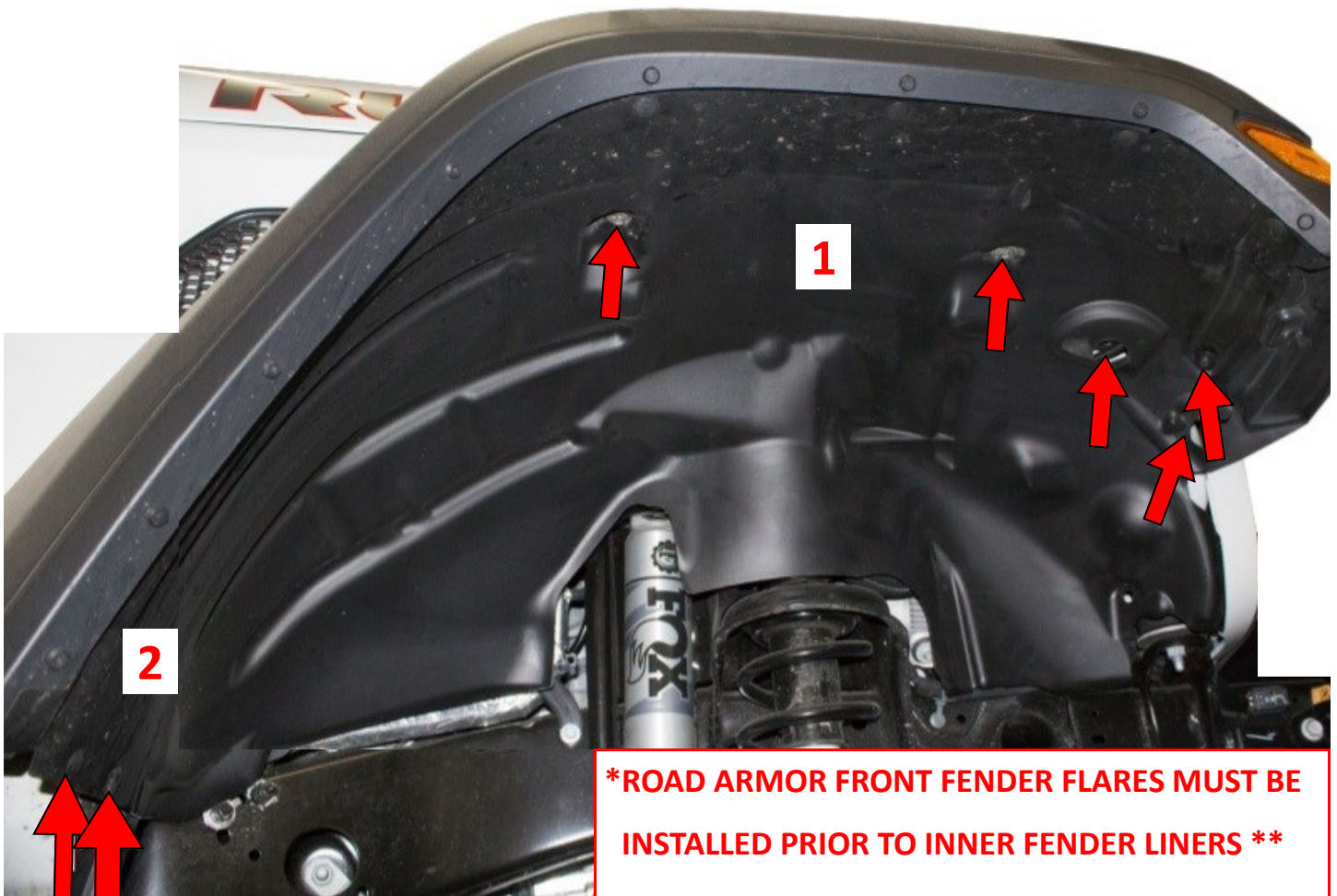
Remove rear fender assembly by firmly pulling on one end of fender until all 10 clips “pop off”.

Unclip and unplug OE fender light harness from inner fender well. REMOVE OE FENDER VENT

STOP

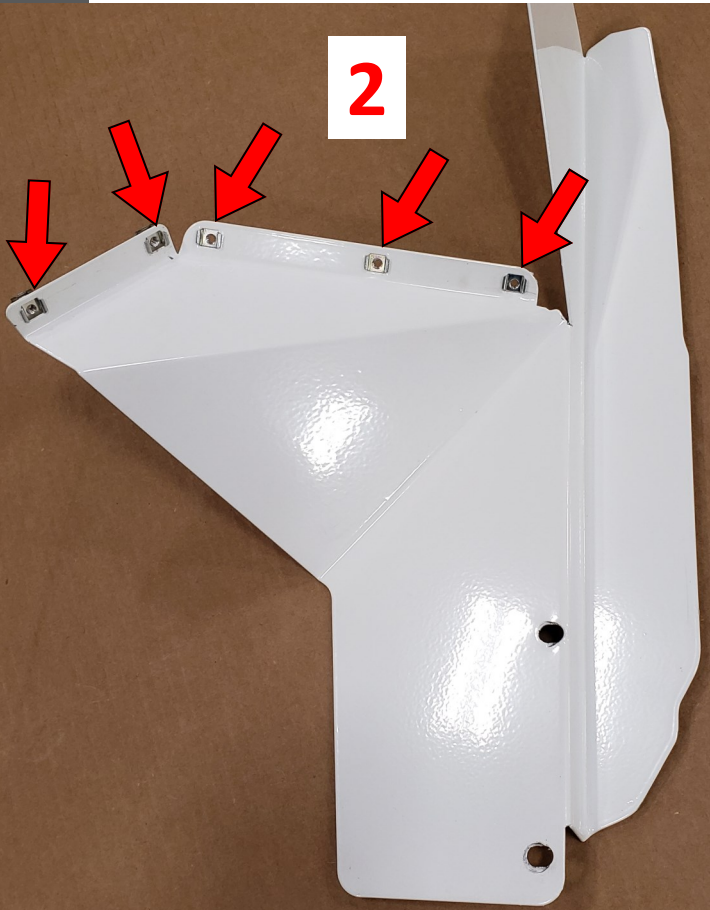
****INSTALL ROAD ARMOR FRONT FENDER FLARE, REFER TO INSTRUCTIONS****

STOP

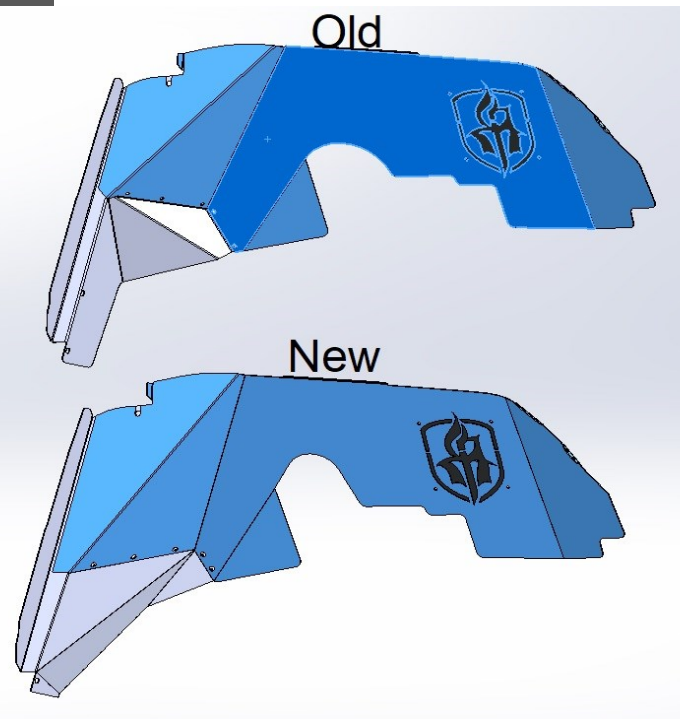
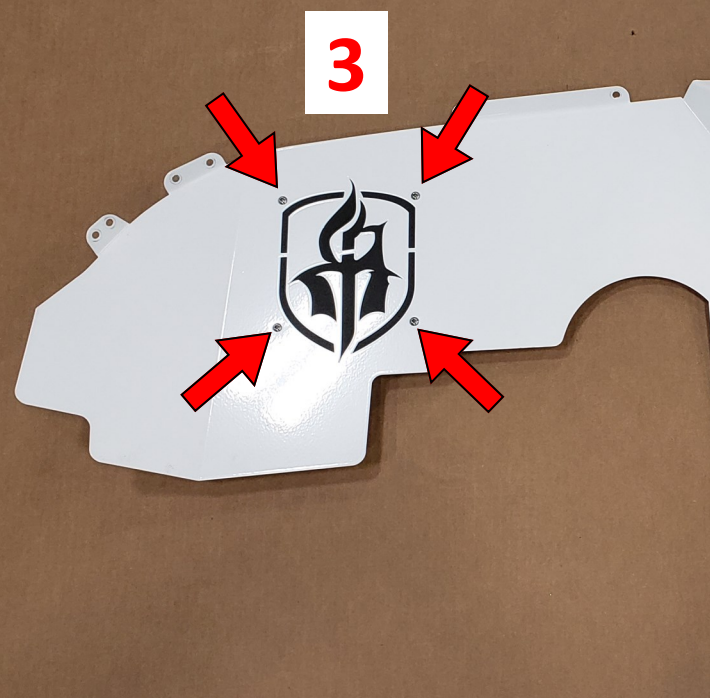


***ROAD ARMOR FRONT FENDER FLARES MUST BE
INSTALLED PRIOR TO INNER FENDER LINERS ****

- 1 Drill hole out to 3/8" as shown.
- 2 Install 5 - #10 Panel Nuts into LOWER FENDER LINER

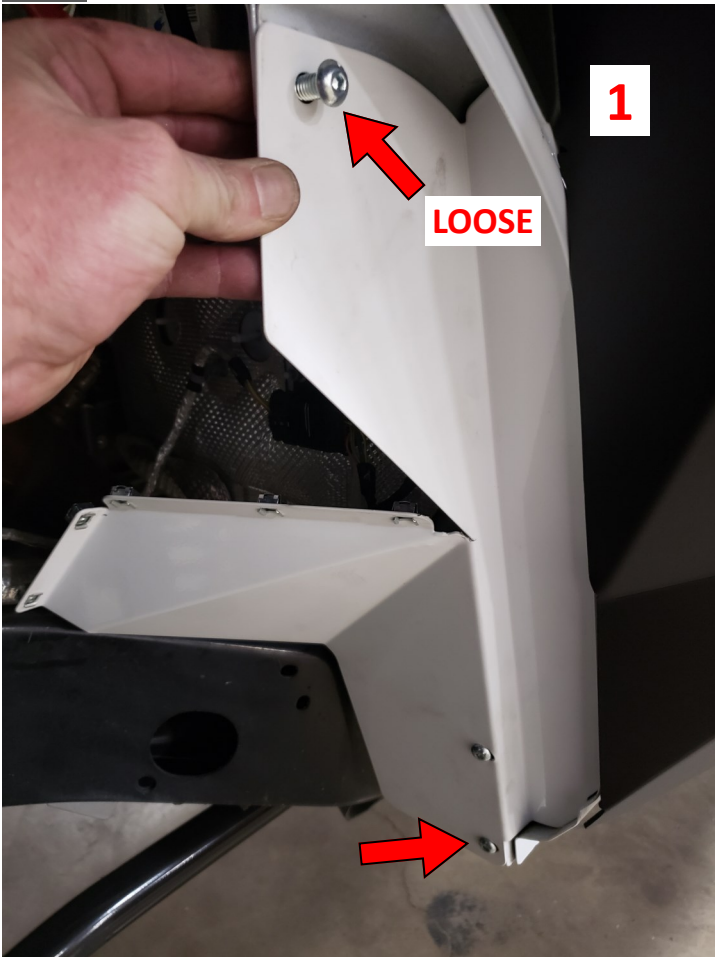


- 3 Install LOGO BACK PLATE using 4 - #10 BOLTS and NUTS onto MAIN FENDER LINER



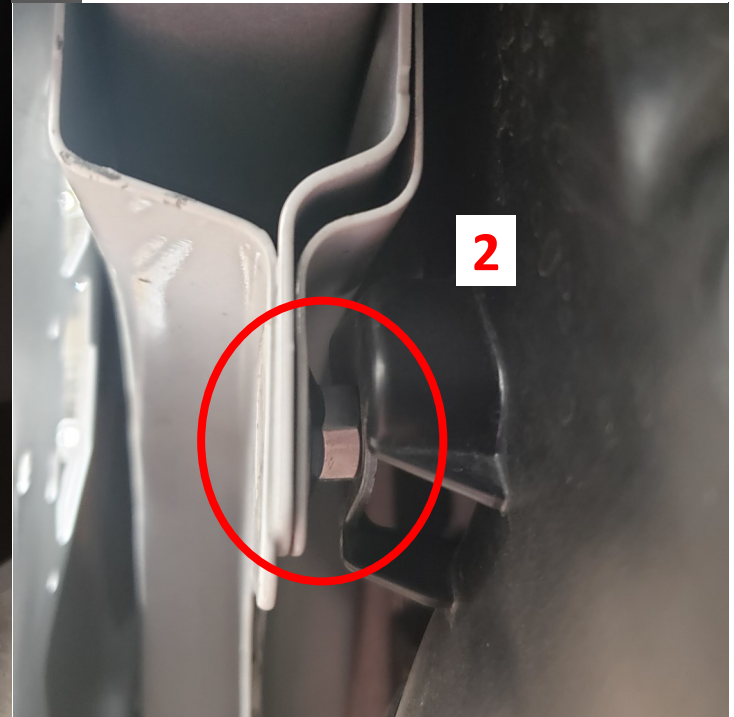
1

Install LOWER INNER LINER onto OE fender using 2 - 5/16" BOLTS and FLANGE NUTS.



2

PSG side will require push pin removed followed by wedging 1—5/16" FLANGE NUT between metal and plastic engine liner.



2

3

Install MAIN INNER LINER under 1 - 5/16" BUTTON HEAD BOLT (previously left loose), followed by 5 - #10 BUTTON HEAD BOLTS.

4

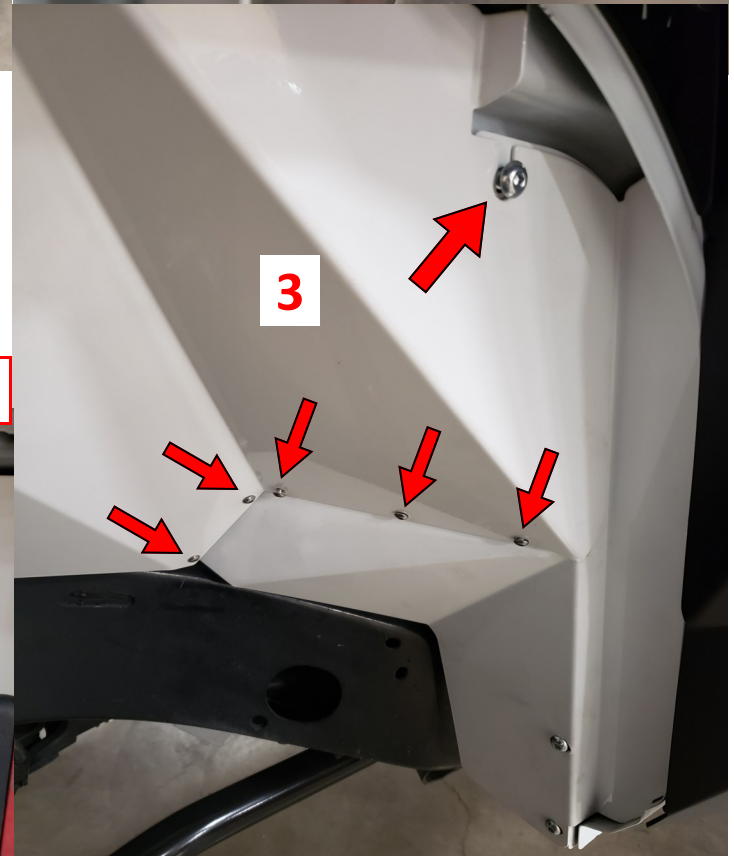
Align top of INNER LINER and Install 2 - 1/4" Self-Drilling Screws into Liner.

****DO NOT OVER TIGHTEN SELF-DRILLING SCREW****



4

3



****DO NOT OVER TIGHTEN SELF - DRILLING SCREWS****

- 1** Align front of INNER LINER and Install 4 - 1/4" Self-Drilling Screws into Liner.
- 2** Trim OE inner liner where necessary.
- 3** Reinstall OEM FENDER at this time.

****ROAD ARMOR FRONT FENDER FLARES MUST BE INSTALLED PRIOR TO INNER FENDER LINERS****

