



# FORCE II™

## 409S Stainless Steel

### Installation Instructions for: **SYSTEM #817659** 1970-1973 CHEVROLET CORVETTE 327 & 350 V8 ENGINES

04/24/14

#### Removal:

1) This system is designed to fit with Flowmaster manifold downpipe kit #'s **81095** or **81098**. It will also fit directly to downpipe kit #'s **81100** & **81102** if using Flowmaster shorty headers part number **814120**. This also ties directly into 2.25" pipe going from the manifolds to just behind the transmission cross member.

Remove the existing exhaust system from the vehicle from this point back. Unbolt the factory hangers at the rear of the mufflers; these will not be used with the Flowmaster system.

#### Installation:



1) After installing the above mentioned downpipe kits or piping to just behind the cross-member, place a provided 2.25" clamp onto the expanded ends of X-pipe assembly **86171S**, then slide onto the back of the manifold pipes (be sure that the pipes are fully slid together). Place a stand under the rear of the assembly and tighten the clamps enough to hold, but still allow for adjustment.

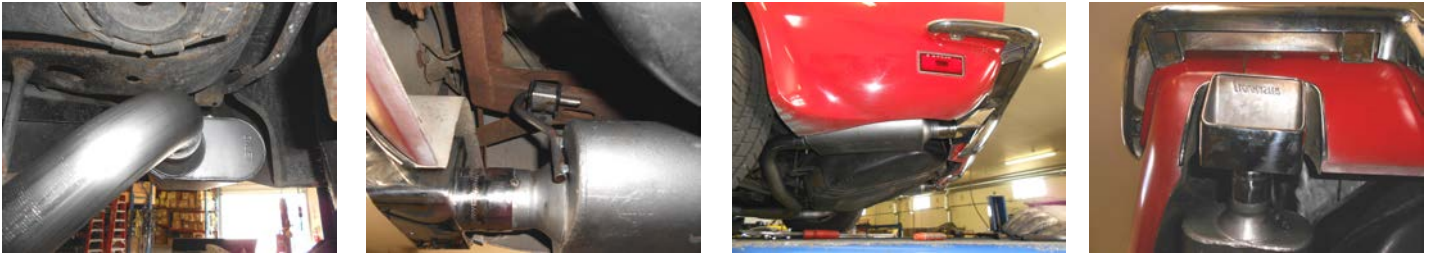


2) Place a provided clamp onto both outlets of X-pipe assembly **86171S**. Place the expanded end of mid pipe **86231S** onto the right outlet of the X-pipe assembly. Rotate the pipe up into position and support the rear of the pipe with a stand. Tighten the clamp enough to hold, but still allow for adjustment. Repeat this step on the left side of the vehicle with pipe **86232S**.

3) Place one of the supplied **HA602** rubber mounts onto the wire hanger of right muffler assembly **842456-353**. Place a provided clamp onto the muffler inlet, then place the assembly onto the back of the mid pipe and slide the two fully together. Support the muffler with a stand. Using a supplied 3/8" bolt, nut, washer and lock washer, bolt the **HA602** hanger to the hole in the frame above the muffler outlet.



4) Place one of the supplied **HA602** rubber mounts onto the wire hanger of left muffler assembly **842456-352**. Place a provided clamp onto the muffler inlet, then place the assembly onto the back of the mid pipe and slide the two fully together. Support the muffler with a stand. Using a supplied 3/8" bolt, nut, washer and lock washer, bolt the **HA602** hanger to the hole in the frame above the muffler outlet.



5) Adjust the position of the pipes and mufflers to provide a satisfactory fit. A minimum of 3/4" clearance around all parts of the system must be maintained; while also keeping suspension travel and vibration in mind. Tighten all clamped connections down securely.

6) For a cleaner appearance and more secure installation, we highly recommend welding all slip-fit connections. If you live in a geographical area that has harsh winters or sees a great deal of precipitation, the use of high temperature paint over the welded areas can help to prevent surface rust and premature corrosion.

### PACKING LIST

<u>Qty</u>	<u>Description</u>	<u>Part #</u>
1	X-Pipe Assembly	86171S
1	Right Mid Pipe	86231S
1	Left Mid Pipe	86232S
1	Left Muffler	842456-352
1	Right Muffler	842456-353
1	Parts kit	PK767
6	2 1/4" Clamp	MC225BS
2	Rubber Hanger	HA602
2	3/8" x 1" Bolt	HW208
2	3/8" Nut	HW103
2	3/8" Flat Washer	HW303
2	3/8" Lock Washer	HW309



Installation diagram for:  
**SYSTEM #817659**  
1970-1973 CHEVROLET CORVETTE  
327 & 350 V8 ENGINES

**FORCE II™**  
*409S, Stainless Steel*

