



# FORCE II

Installation Instructions for

**817757**

**CAT-BACK EXHAUST**

**2017-2018 FORD F-250/F-350 TRUCKS**

**FITS: 6.2L ENGINES, ALL W.B.**

### REVIEW FLOWMASTER SYSTEM:

1. Please take a moment to read and understand these instructions before installing your Flowmaster performance system. Use the parts drawing and list to verify exhaust system contents.

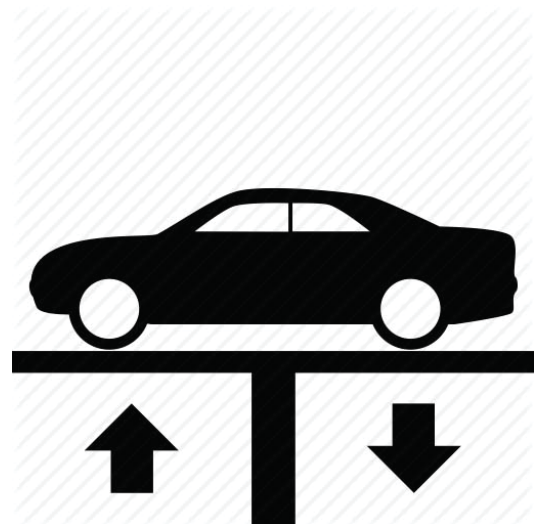
PART NO.	DESCRIPTION	QTY.
26732S	Inlet Pipe	1
8530572-226	Muffler	1
26733S	Right Tailpipe	1
26734S	Left Front Tailpipe	1
26735S	Left Rear Tailpipe	1
26484S	Side Exit Pipe	2
26485S	Rear Exit Pipe	2
ST462	Tip	2
PK967	Hardware Pack	1
MC300BS	Band Clamp	7
503HA	Hanger	1
HW502	7/16" Hanger Keeper	2
HW503	1/2" Hanger Keeper	1
HA168	Isolator	1

### REMOVE STOCK EXHAUST SYSTEM:

**WARNING:**

Avoid serious burns! Allow the exhaust system to cool completely before removing the factory exhaust system.

2. Raise the vehicle up on a hoist or rack to working height. If you don't have access to a hoist or rack, raise the vehicle and support securely with jack stands. Use penetrating lubricant as necessary to ease disassembly.



**NOTE:** Use stands as necessary to support parts as you detach them from your vehicle.

3. Cut stock tailpipe off near muffler outlet. Remove hanger near tailpipe outlet from rubber isolator on vehicle. Remove tailpipe.



4. Remove muffler hangers (x3) from rubber mounts on vehicle. Loosen clamp at muffler inlet connection.



5. Remove muffler and set aside.

**NOTE:** The factory resonator unit(s) forward of muffler are not replaced with new system and will remain in place.



## INSTALL FLOWMASTER EXHAUST SYSTEM

- Remove nuts from stock and Flowmaster clamps, apply anti-seize compound to bolts and re-install nuts.

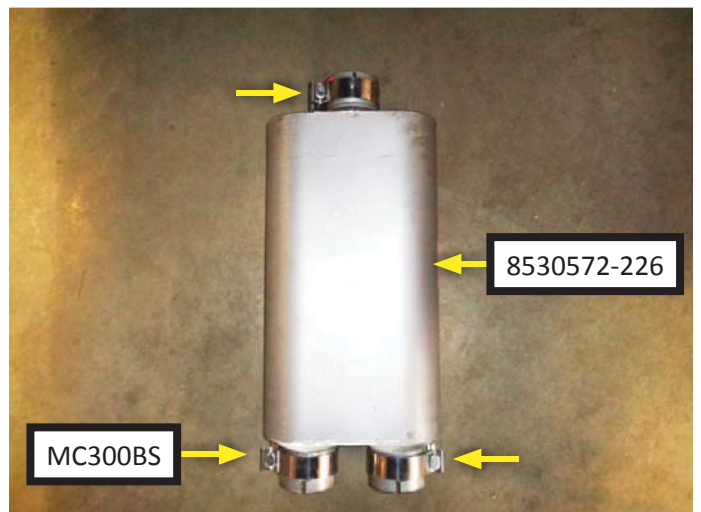
**NOTE:** The image in this step is intended for illustration purposes only and may or may not accurately reflect components included in your kit.



- Place **clamp (MC300BS)** onto slip-fit of **inlet pipe (26732S)**. Connect inlet pipe to factory pipe by lining up notch on slip fit with tab on factory pipe, then insert wire hanger into mount. Tighten clamp just enough to allow for adjustment.

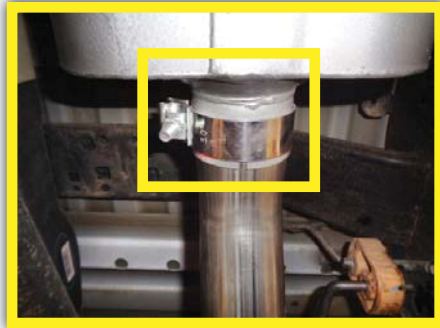


- Place **clamps (MC300BS) (x3)** onto inlet and outlets of **muffler (8530572-226)**.

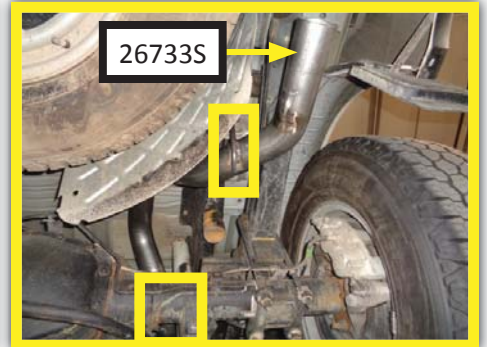




9. Place slip fit of muffler into inlet pipe. Tighten clamp just enough to allow for adjustment.



10. Place **right tailpipe (26733S)** into passenger side muffler outlet. Insert both wire hangers into stock mounts to complete connection. Tighten clamp just enough to allow for adjustment.



11. Place **clamp (MC300BS)** onto slip-fit of **side exit pipe (26484S)**. Place side exit pipe into right tailpipe. Tighten clamp just enough to allow for adjustment.

**OPTION:** For a rear exit exhaust system, complete this step using **rear exit pipe (26485S)** instead of side exit pipe.



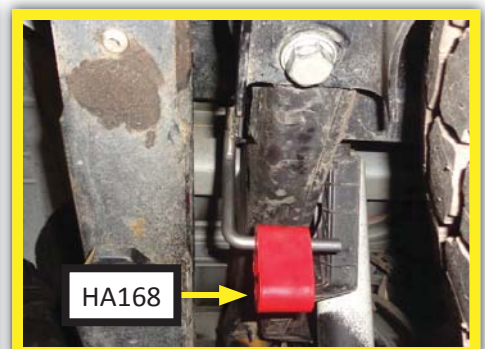
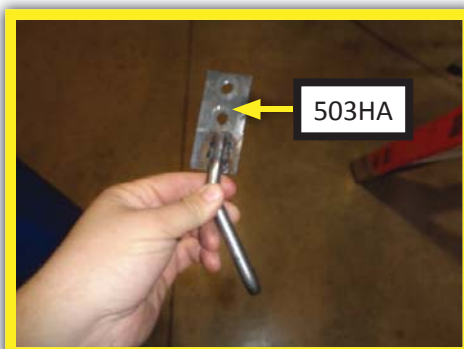
12. Place **left front tailpipe (26734S)**, into driver side muffler outlet. Insert wire hanger into stock mount. Tighten clamp just enough to allow for adjustment.



13. Remove stock bolts (x2) indicated behind and above driver side rear tire. Retain bolts for re-use.

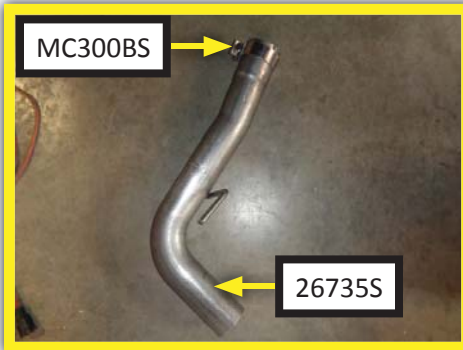


14. Place **hanger (503HA)** onto vehicle frame then re-install factory bolts (x2) (removed step 13). Install **isolator (HA168)** onto hanger.



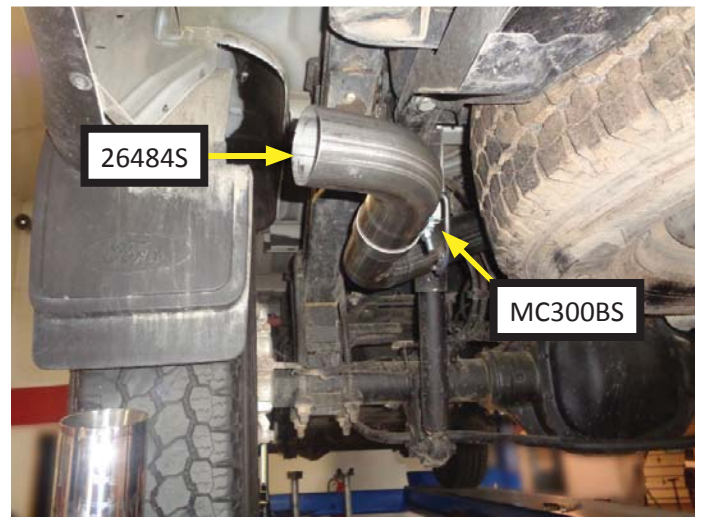


15. Place **clamp (MC300BS)** onto slip-fit of **left rear tailpipe (26735S)**. Connect left rear tailpipe and left front tailpipe then insert wire hanger into isolator. Tighten clamp just enough to allow for adjustment.



16. Place **clamp (MC300BS)** onto slip-fit of **side exit pipe (26484S)**. Connect side exit pipe and left rear tailpipe. Tighten clamp just enough to allow for adjustment.

**OPTION:** For a rear exit exhaust system, complete this step using **rear exit pipe (26485S)** instead of side exit pipe.



17. Place **tip (ST462)** onto side or rear exit pipe. Tighten clamp just enough to allow for adjustment.



18. Place **tip (ST462)** onto side or rear exit pipe.  
Tighten clamp just enough to allow for adjustment.



19. Adjust the exhaust components to provide a satisfactory fit. Maintain a minimum of 1/2" clearance around all components of the exhaust system, keeping in mind suspension, travel and vibration. After making any required adjustments, securely tighten the clamps.
20. Slide **7/16" hanger keepers (x2 HW502)** onto left rear tailpipe hangers and **1/2" hanger keeper (HW503)** onto inlet pipe hanger to prevent components from slipping out of their rubber mounts.
21. We recommend applying a one inch tack weld to all slip-fit connections for a more secure installation. You may also apply high temperature paint over welded areas to prevent rust and premature corrosion.



Congratulations, the installation of your FLOWMASTER performance exhaust system is now complete!

**NOTE:** Flowmaster maintains a highly trained technical service department to answer your technical questions, provide additional product information and offer various recommendations.

Technical Service: (707) 544-4761  
Monday – Friday: 7:30 am to 5:00 pm Pacific Time  
(Closed Saturday and Sunday)

**MAIN OFFICE**  
100 Stony Point RD., Suite 125  
Santa Rosa, CA 95401





# FORCE II

Installation Instructions for

## 817757

### CAT-BACK EXHAUST

#### 2017-2018 FORD F-250/F-350 TRUCKS

#### FITS: 6.2L ENGINES, ALL W.B.

