



INSTALLATION INSTRUCTIONS

POWER OUTLET #862

Call (970) 564-1762 for Technical Support

PARTS CHECKLIST



#1 Outlet



#10 Crimp cap



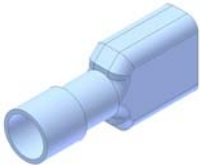
#9 Tap-in connector



#8 Fuse



#7 Fuse holder



#4 – (2) Female terminal



#12 Ring terminal



#6 Black Ground Wire



#5 Red Hot wire



#11 – (2) Zip ties



#2 – (2) 8-32 X 1/2" FLAT HEAD



#3 – (2) 8-32 HEXWASHER NUT

TOOLS NEEDED

- Phillips head screw driver (Short)
- 11/32" Nut-driver and/or wrench
- Electrical wire cutting, stripping, and crimping tool (For 12 volt outlet installation)
- Electrical volt meter (For 12 volt outlet installation)

ATTENTION:

This installation should be done by a skilled professional. Tuffy does not warranty any electrical components or damage caused by them. Improper installation can cause damage to the vehicle and/or any electronics plugged into the outlet. Make sure there is no power to the wiring when installing.

PLEASE READ ALL INSTRUCTIONS THOROUGHLY BEFORE STARTING INSTALLATION.

1. Locate a suitable location for the outlet on a flat surface with adequate room behind for the electrical components then drill the required holes for mounting.
2. Locate a 12 Volt 15 Amp rated power source. Make sure it is only live when the ignition is on so unwanted battery run down is avoided when the vehicle is not running.
3. Attach the Fuse holder (#7 - Fig 1) to the Red (Hot) wire (#5 – Fig 1) using a provided Closed end crimp cap connector (#10 – Fig 1).
4. With the power supply off attach the other end of the Fuse holder (#7 - Fig 1) to a power source using the tap-in squeeze connector provided (#9 – Fig 1). Make sure this fuse holder is easily accessible for replacement.
5. Attach the Black (Ground) wire (#6 – Fig 1) to the provided Ring terminal (#12 – Fig 1) then fasten it to an adequately grounded bolt/surface.
6. Use the provided zip ties (#11 – Fig 1) to support the wires and make sure there is no potential for damage caused by sharp edges. Cut the wire to the correct length where the outlet will be located and install the crimp on flat female terminals (#4 – Fig 1) on the end of the Red (Hot) and Black (Ground) wires.
7. Install Fuse (#8 – Fig 1) in Fuse holder (#7 – Fig 1).
8. Using a volt meter test that there is 12 volt power to the Red (Hot) wire and that the Black (Ground) wire is properly grounded. **Turn off power when complete.**
9. Fasten the 12 Volt outlet (#1 – Fig 1). Make sure it is oriented so the cover opens hinging up. Make a note of which terminal is positive and negative. When the wires are hooked up it may be difficult to see the emblems.
10. With the power turned off connect the Red (Hot) wire terminal (#4 – Fig 1) to the corresponding “+” terminal and the Black (Ground) wire terminal (#4 – Fig 1) to the “-“ terminal on the back of the 12 volt outlet (1 – Fig 1) and test with a volt meter. The small bottom center connection inside the outlet should have power while the inside connection on the wall perimeter should be grounded. If this is not clear test an existing outlet in the vehicle and make sure it matches. **Do not test power by plugging in electronics.**

FIGURE 1

