

banks

with Installation Instructions
Owner's Manual

Banks Dash Pod™
Dual-Gauge Mount

'96-07 Jeep Wrangler

THIS MANUAL IS FOR USE WITH SYSTEM 63342

Gale Banks Engineering
546 Duggan Avenue • Azusa, CA 91702
(626) 969-9600 • Fax (626) 334-1743

Product Information & Sales: (800) 438-7693
Customer Support: (888) 839-5600
Installation Support: (888) 839-2700

bankspower.com

banks

Products available from Banks Power for the Jeep 2.5/4.0L



Banks iQ System (P/N 61201, 61195)

- 5" touchscreen interface
- Interchangeable gauge display, read and clear codes, monitor engine diagnostics, log data, time your vehicles runs and much more.

Torque Tubes/Revolver 2.5L (P/N 51316) 4.0L (P/N 51327, 51306)

- Virtually indestructible
- Each Torque Tube has a seamless high-velocity collector.
- Literally "pulls" out the exhaust, unleashing greater torque and helping the intake stroke to draw in more air.

Banks Ram-Air Intake System 4.0L (P/N 41816) '97-2006

- Increases your airflow over stock.

- Adds power, improves fuel economy, lowers EGTs and reduces smoke.

Banks Stinger System 4.0L (P/N 51330, 51332, 51324, 51336) Contents:

- Ram-Air Intake
- Monster Exhaust
- AutoMind Programmer ('98-up)

Banks PowerPack System 4.0L (P/N 51331, 51333, 51335, 51337) Contents:

- Ram-Air Intake
- Monster Exhaust
- Torque Tubes
- AutoMind Programmer ('98-up)

Banks Monster® Exhaust System (P/N 51312, 51313, 51314, 51315)

- Increases exhaust flow.
- Decreases backpressure.
- Lowers exhaust gas temperatures.
- Increases power.

For More Information please call (888) 635-4565
or Visit us online @ www.bankspower.com

Dear Customer,

If you have any questions concerning the installation of your Banks Power system, please call our Technical Service Hotline at (888) 839-2700 between 7:00 am and 4:00 pm (PT). If you have any questions relating to shipping or billing, please contact our Customer Service Department at (888) 839-5600.

Thank you.

Tools Required:

- Standard and Phillips head screwdrivers
- Pneumatic or electric die grinder
- Compressed air source and hoses or extension cord
- Eye and ear protection

Dash Pod Installation

1. Remove trim with vent that runs along top of the dash at base of windshield. Using a small standard head screwdriver to release clips, carefully pry trim at five locations: both ends, each side of vent, and in front of vent.

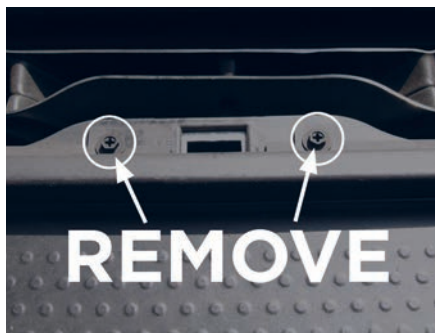


2. Remove ashtray by pressing on tab to release and pulling forward.



3. Use a #2 Phillips head screwdriver to remove two screws behind coin tray and one screw behind ashtray.

⚠ NOTE: Retain all screws for reinstallation.





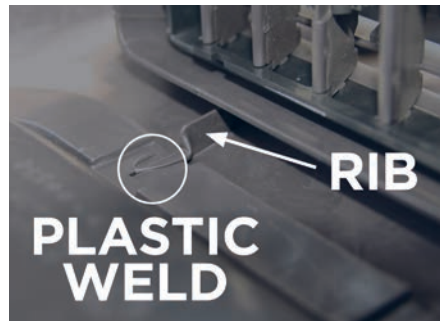
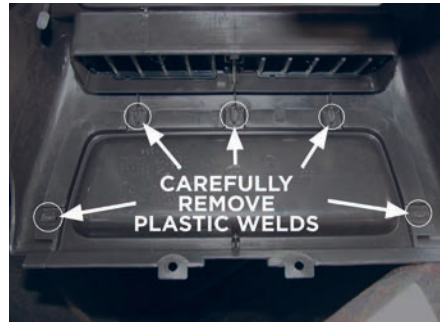
4. Remove center console bezel by carefully pulling forward on both top corners to release clips. Pull from center of bezel to remove.



5. Remove coin tray from center console bezel by carefully grinding five plastic welds. Take care while grinding as to not damage the center console bezel.

⚠ NOTE: Only grind plastic welds enough to remove coin tray. Do not grind ribs near plastic welds, they are used to align dash pod.

⚠ Caution: Use eye and ear protection when grinding.



6. Install and secure gauges and/or accessories into dash pod. Connect any connectors, lead wires, or reference hose to gauges and accessories.



7. Place dash pod with gauges and/or accessories on top of dash with leading edge on top of A/C vents. Secure dash pod to dash with two screws from step #3 in holes on back edge of dash pod.



8. Reinstall center console bezel with the top edge over dash pod by aligning clips and pressing firmly until secured. Reinstall screw behind ashtray.



9. Reinstall ashtray by properly aligning bottom edge and pressing and holding tab until it clears catch as ashtray is closed.



10. Reinstall trim with vent on top of dash under windshield by sliding back edge in place. Align clips and press firmly until secured.



Installation is now complete.

Gale Banks Engineering
546 Duggan Avenue • Azusa, CA 91702
(626) 969-9600 • Fax (626) 334-1743

Product Information & Sales: (800) 438-7693
Customer Support: (888) 839-5600
Installation Support: (888) 839-2700

bankspower.com