



BX1126

2007-12 Jeep Wrangler

(Includes Sport)

Installation Instructions

Serial Number

Please read **BOTH** these Installation Instructions and the General Towing Instructions before attempting to install or operate this equipment.

- Blue Ox® towing products and accessories are intended to be installed by Blue Ox® Dealers who are familiar with our products and have the equipment and knowledge to do “fit work”. When necessary, Blue Ox® Dealers can be found at www.blueox.com or by contacting our Customer Care Department at (402) 385-3051.
- Many Blue Ox® Baseplates are designed to use existing holes and hardware to mount the baseplate to the towed vehicle. Even though bolts are there, do not assume they are adequate for baseplate mounting. Always use hardware supplied in the hardware kit or existing hardware specified in the Baseplate Installation Instructions.

Attachment Tab Height: 14-1/2”
Attachment Tab Width: 24”

Bolt Torque Specifications
Torque in Foot-Pounds for Metric Bolts

Bolt Size	Grade 8.8	Grade 10.9
6MM	6	8
8MM	16	22
10MM	31	40
12MM	54	70
14MM	89	117

Confirm the towability and pre-towing procedures for your vehicle with the owner’s manual or contact the vehicle’s manufacturer for specific towing procedures.

Bolt Torque Specifications
Torque in Foot-Pounds for Inch Bolts

Bolt Size	Grade 5	Grade 8
1/4”	10	14
5/16”	19	29
3/8”	33	47
7/16”	54	78
1/2”	78	119
5/8”	154	230



If the front of your vehicle looks different than this, call us at (402) 385-3051.

! WARNING

Failure to read and follow these instructions could result in separation of the towed vehicle from the tow bar, causing property damage, loss of towed vehicle, personal injury or death.

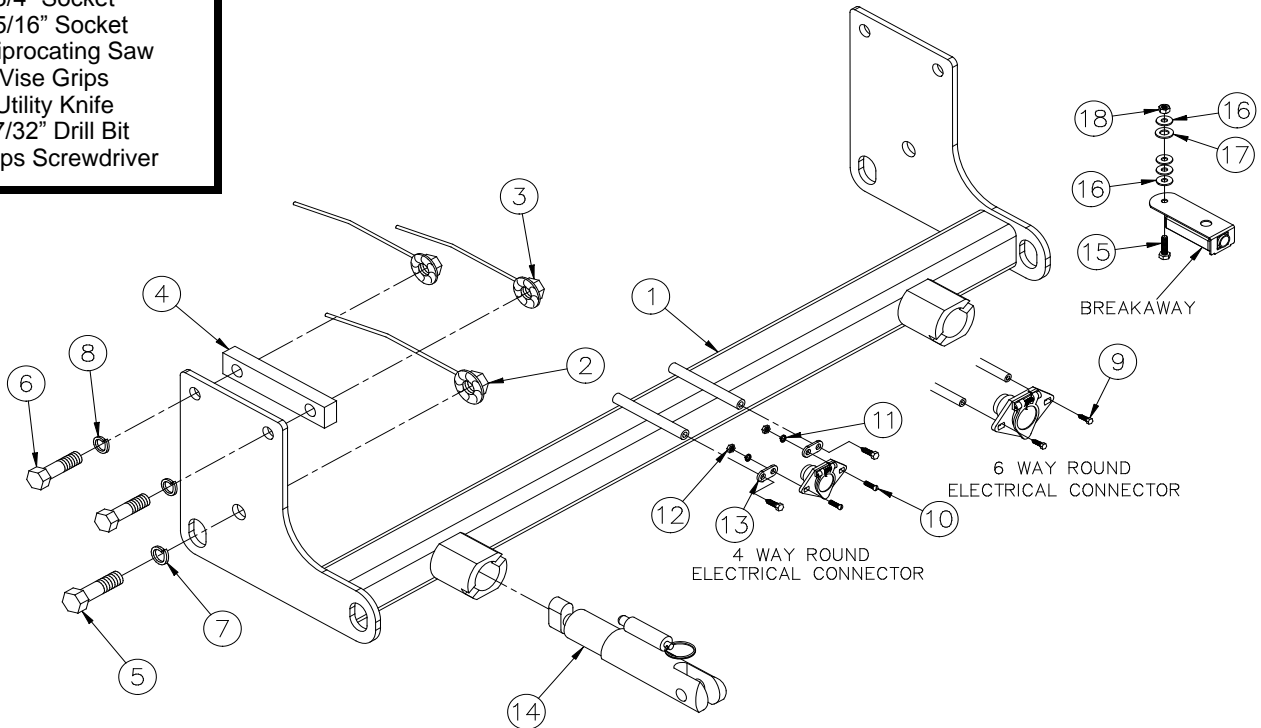
BX1126
2007-12 Jeep Wrangler
(Includes Sport)
Installation Instructions

Parts List

Ref. No.	Qty.	Part #	Description
1	1	61-6344	Weldment, Baseplate, BX1126
2	2	61-3997	5/8" Nut Wire
3	4	61-4029	1/2-13 Whiz Nut, with 14" Wire
4	2	102-6768	Plate, Spacer, BX1126
5	2	201-0350	5/8-11 x 1 1/2" Hex Bolt, Grade 5, ZP
6	4	201-0068	1/2-13 x 1 3/4" Hex Bolt, Grade 5, ZP
7	2	203-0013	5/8" Lock Washer, ZP
8	4	203-0012	1/2" Lock Washer, ZP
9	2	201-0553	1/4-20 x 1/2 Hx. Wshd, Type F Screw
10	2	201-0192	#10-32 x 1/2 Slot, Round Head Screw
11	2	203-0054	#10 Lock Washer
12	2	202-0047	#10-32 Hex Nut
13	2	101-5822	Adapter, 4 Way Connector
14	2	62-3468	Attachment, Assembly, SF/SB (R)
15-18	2	BX88181	Breakaway System (Not Provided)
	2	290-0437	Cap Plug, Black (Not Shown)
	2	229-0359	Quick Link, 3/8", ZP (Not Shown)
	2	226-0046	Baseplate Safety Cable, 36" Class III (Not Shown)

Tools Required

- Loctite® RED
- 18mm Socket
- 3/4" Socket
- 15/16" Socket
- Reciprocating Saw
- Vise Grips
- Utility Knife
- 17/32" Drill Bit
- Phillips Screwdriver



Important:

Use only genuine factory replacement parts on your baseplate. Do NOT substitute homemade or non-typical parts. If a bolt is lost or in need of replacement, for your safety and the preservation of your baseplate, be sure to use a replacement bolt of the same grade (In most cases it will be Grade 5, please reference the parts list above). Replacement parts may be ordered through your nearest Blue Ox® Dealer or Distributor. Failing to follow and/or altering these installation instructions in either installation or required equipment will void the manufacturer's warranty.

BX1126
2007-12 Jeep Wrangler
(Includes Sport)

Installation Instructions

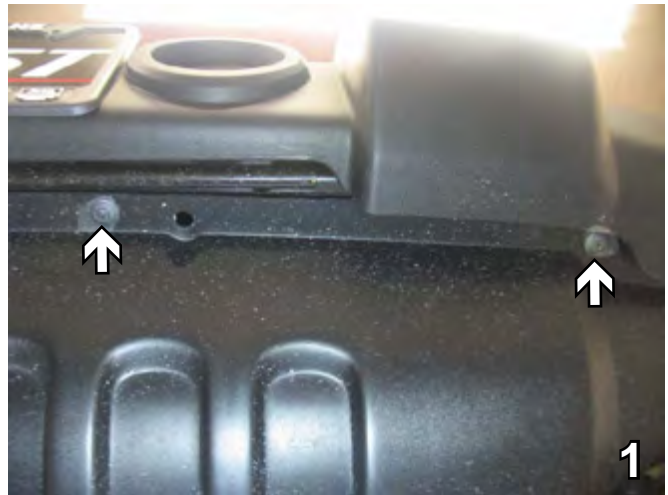
Installation Instructions:

Attachment Tabs: Due to the design of the removable tabs, the RangeFinderII tow bar can not be used. Adapters, except the BX8833 and BX88151, can not be used with this baseplate.

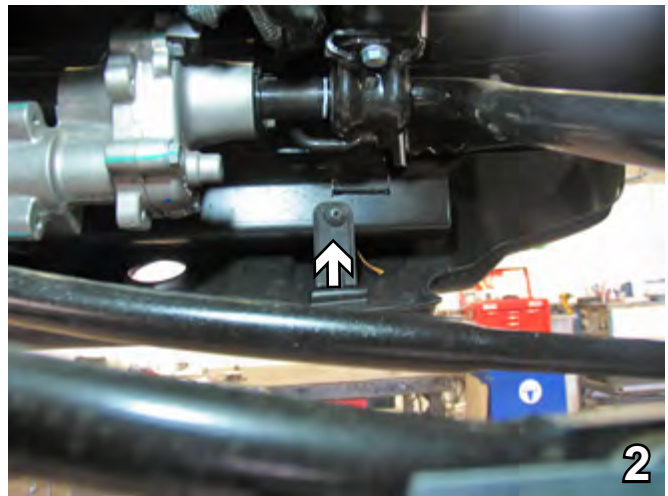
Installation Notes: The bellypan and metal bumper are removed for the baseplate installation. Trimming of the bellypan is required. Drilling is required.

The dimensional variations between otherwise identical vehicles can be considerable. While the baseplate was designed for easy installation, it may be necessary to tailor the baseplate slightly to compensate for auto manufacturer's tolerances. These minor adjustments may include filing a hole slightly, bending electrical rods or bending end plates.

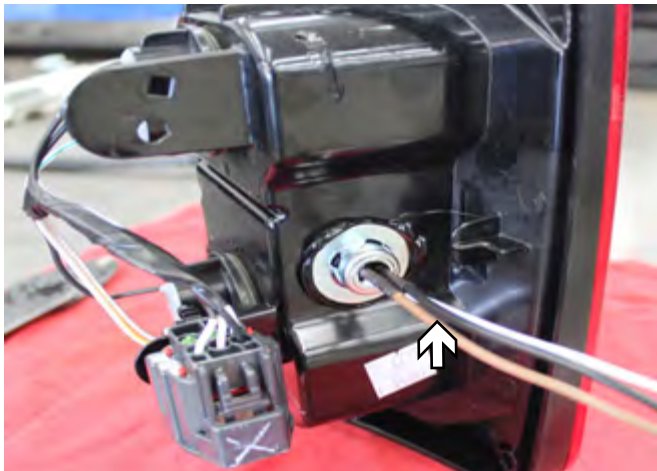
The BX8869 Bulb and Socket Wiring Kit is recommended for this vehicle.



1. Remove four Phillips pushpins from the bottom of the belly pan (driver's side shown in photo). Set pushpins aside to be reinstalled later.



2. Remove two Phillips pushpins from tabs on the backside of the belly pan. Set bellypan and pushpins aside to be reinstalled later.

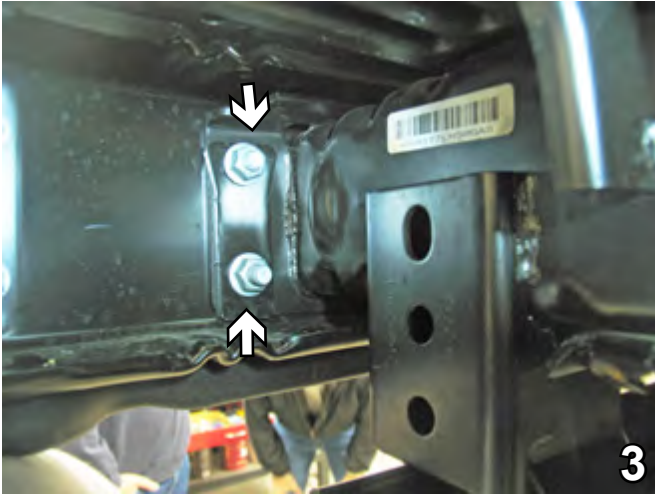


Possible location for the Bulb and Socket Wiring Kit (BX8869)

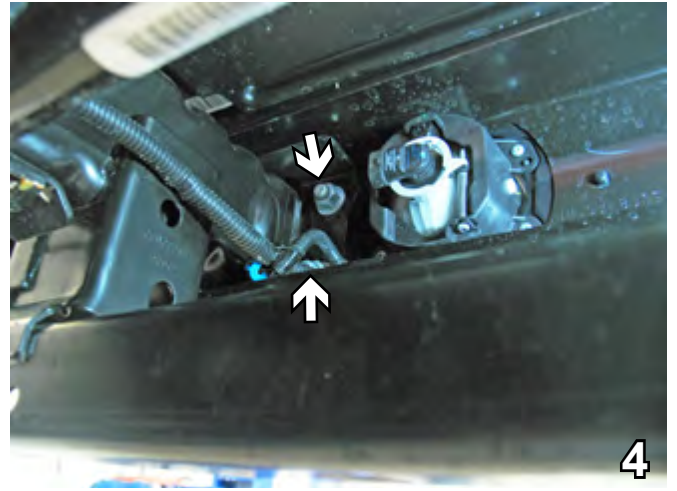
Do not use the towed vehicle for storing luggage, equipment, etc. This may cause you to exceed the towing capacity of the tow bar, baseplate, and its accessories.

Handling of some cosmetic parts when installing this product may require the use of protective covers, rags, specialty tools, etc. to prevent damage.

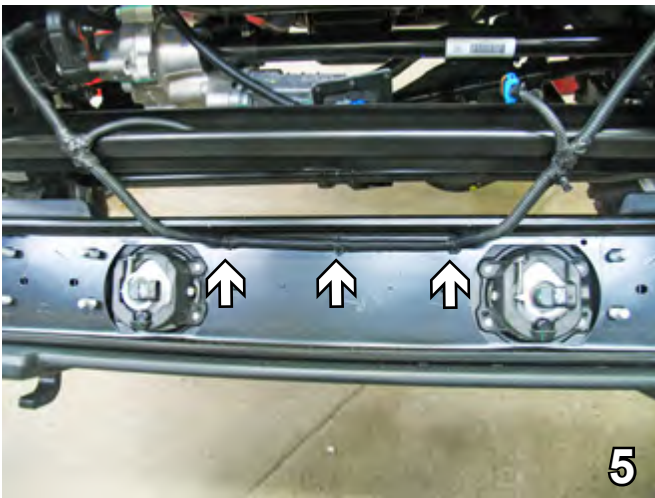
BX1126
2007-12 Jeep Wrangler
(Includes Sport)
Installation Instructions



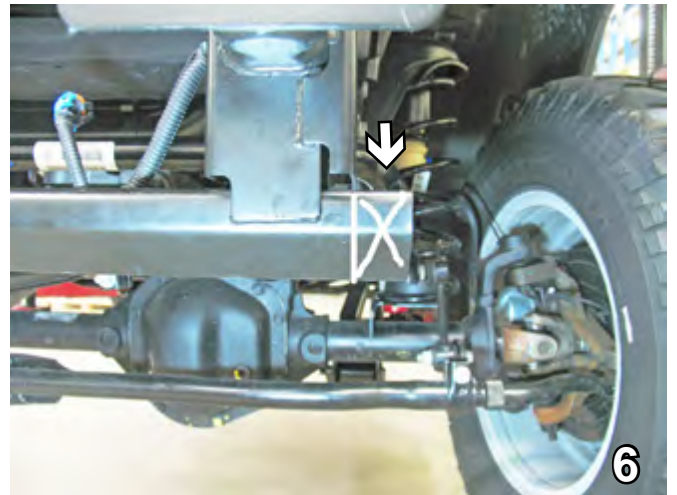
3. Disconnect foglights from back side of metal bumper. Using the 18mm socket, remove two metric bolts on outside edge of frame. Do this to both sides of vehicle. Set bolts aside to be reinstalled later.



4. Using the 18mm socket, remove two metric bolts on inside edge of frame. Do this to both sides of the vehicle. Set bolts aside to be reinstalled later.



5. Pull metal bumper forward and disconnect clips from coax cable running along the backside of the bumper. Set metal bumper aside to be reinstalled later.



6. **On the 2007-09 models:** Using the reciprocating saw, cut the lower frame extension flush with the outside edge of the lower side bracket. Do this to both sides of the vehicle. We recommend painting the cut edges to prevent them from rusting.



7. **On the 2007-09 models:** Align the baseplate's lower hole with the existing lower hole in the frame, insure baseplate is level with frame and clamp in place with the vice grips. Do this to both sides of the vehicle.

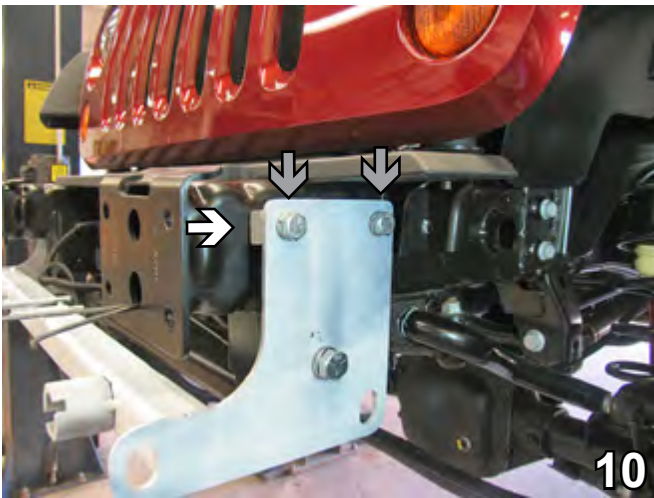
BX1126
2007-12 Jeep Wrangler
(Includes Sport)
Installation Instructions



8. **On the 2010 model and newer:** Align the baseplate's lower hole with the existing middle hole in the frame, insure baseplate is level with frame and clamp in place with the vice grips. Do this to both sides of the vehicle.



9. Insert the 5/8-11 whiz nut into the frame end and align with lower hole on the 2007-09s and the middle hole on the 2010s. Install the 5/8-11 x 1 1/2" hex bolt and 5/8" lock washer and tighten to whiz nut. Be sure to use loctite on all bolts. Do this to both sides of the vehicle.



10. Using the baseplate as a template, drill the remaining holes into the frame with the 17/32" drill bit. Insert the 1/2-13 whiz nut into the frame end and align with drilled holes. Install the spacer plate between the baseplate and the frame (see white arrow) and install 1/2-13 x 1 3/4" hex bolts and 1/2" lock washers and tighten to whiz nuts (see grey arrows). Do this to both sides of the vehicle.
11. Reinstall coax cable, metal bumper and bolts. Connect foglights.



BE SURE TO USE LOCTITE® RED ON ALL BOLTS BEFORE TIGHTENING. TIGHTEN ALL BOLTS ACCORDING TO THE TORQUE CHART ON THE FRONT PAGE OF THESE INSTRUCTIONS OR ON PAGE 3 OF THE BASEPLATE TOWING GENERAL INSTRUCTIONS.

When using power drills be aware of the dangers of torque and drill bit length.

BX1126
2007-12 Jeep Wrangler
(Includes Sport)
Installation Instructions



13. Attach the permanent baseplate safety cables to the provided convenience link on the baseplate (gray arrow). The photo above shows the recommended installation of the cables to frame of vehicle (white arrow). Additional options may interfere with suggested mounting; in this case secure the cables to a solid piece of the frame as described in the instructions included with the permanent baseplate safety cables. Be sure the safety cables do not rub against any hoses or moving parts. Do this to both sides of the vehicle.

Install the towbar and safety cables according to the instructions provided in their packages. When demonstrating this to the customer, be sure to include all the contents and packages.

Do **NOT** substitute other devices if the tow bar pins and clips are misplaced.

Be sure that **ALL** electrical connections are plugged in properly and functioning **BEFORE** installing the fascia.

DEALER or INSTALLER:
Be certain the user receives the instruction sheets for their products.



Shown without removable tabs installed



Shown with removable tabs installed

If the baseplate is in an accident, it must be replaced. **DO NOT** use it again! An accident can cause unseen damage and using it again could result in more damage or serious injury. **DO NOT** use the baseplate if it is damaged or missing parts.

BX1126
2007-12 Jeep Wrangler
(Includes Sport)
Installation Instructions

CUSTOMER SERVICE COMMITMENT

Blue Ox® is committed to providing you with exceptional customer care throughout your lifetime with our products. Our team is here to assist you with any questions you may have regarding the performance of your product. Simply call (402) 385-3051 and you can speak with our customer care team.

Additionally, please visit our website to see which rallies our Destination America team will be attending. For a nominal fee, our service technician will service your towing system to ensure it's in proper working condition. Also, as a commitment to our customers, should you visit our factory, you can stay at our full service Blue Ox® campground at no charge along with enjoying a factory tour.

Again, thank you for being our customer and for the confidence you have shown in the performance of our products. It is because of customers like you we enjoy the success we have today.



© 2011 Blue Ox
One Mill Road, Industrial Park
Pender, Nebraska 68047
Phone: (402) 385-3051 • Fax: (402) 385-3360
www.blueox.com