



BX1134

2013 Jeep Wrangler Rubicon 10th Anniversary Edition
 2014 Jeep Wrangler Rubicon X
 2013 Jeep Wrangler Rubicon w/ ARB Stubby Bar
 Installation Instructions

Please read BOTH these Installation Instructions and the General Instructions prior to installing or operating this equipment.

- Blue Ox® towing products and accessories are intended to be installed by Blue Ox® Dealers who are familiar with our products and have the equipment and knowledge necessary to do “fit work”. If needed, Blue Ox® Dealers can be found at www.blueox.com or by contacting our Customer Care Department at (402) 385-3051.
- Many Blue Ox® baseplates are designed to use existing holes and hardware to mount the baseplate to the towed vehicle. Even though bolts are there, do not assume they are adequate for baseplate mounting. Always use the hardware supplied in the hardware kit and existing hardware as specified in the installation instructions.

Serial Number

Attachment Tab Height: 17”

Attachment Tab Width: 24”

Bolt Torque Specifications

Torque in Foot-Pounds for Inch Bolts

Bolt Size	Grade 5	Grade 8
1/4”	10	14
5/16”	19	29
3/8”	33	47
7/16”	54	78
1/2”	78	119
5/8”	154	230
3/4”	257	380



Bolt Torque Specifications

Torque in Foot-Pounds for Metric Bolts

Bolt Size	Grade 8.8	Grade 10.9
6MM	6	8
8MM	16	22
10MM	31	40
12MM	54	70
14MM	89	117
16MM	161	230
18MM	222	318



If the front of your vehicle looks different than this, please contact us at (402)385-3051.



WARNING

Failure to read and follow these instructions could result in separation of the towed vehicle from the tow bar, causing property damage, loss of towed vehicle, personal injury or death.

Reference your vehicle owner’s manual for manufacturer’s towing specifications.

BX1134
2013 Jeep Wrangler Rubicon 10th Anniversary Edition
2014 Jeep Wrangler Rubicon X
2013 Jeep Wrangler Rubicon w/ ARB Stubby Bar

Installation Instructions

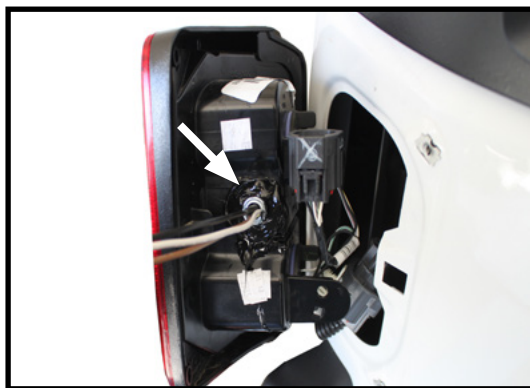
Attachment Tabs: Due to the design of the removable tabs, the RangeFinder II tow bar can not be used. Adapters, except the BX8833 and BX88151, can not be used with this baseplate.

Instruction Notes: The belly pan and metal bumper are removed and reinstalled for the baseplate installation. Some drilling and trimming is required.

Place all components that are removed on a flat, sturdy surface. All items will be reinstalled unless otherwise noted after the baseplate is installed.

The dimensional variations between otherwise identical vehicles can be considerable. While the baseplate was designed for easy installation, it may be necessary to tailor the baseplate slightly to compensate for vehicle manufacturer's tolerances.

The BX8869 Tail Light Wiring Kit is recommended for this vehicle.



Drill a hole according to the tail
light wiring kit instructions.

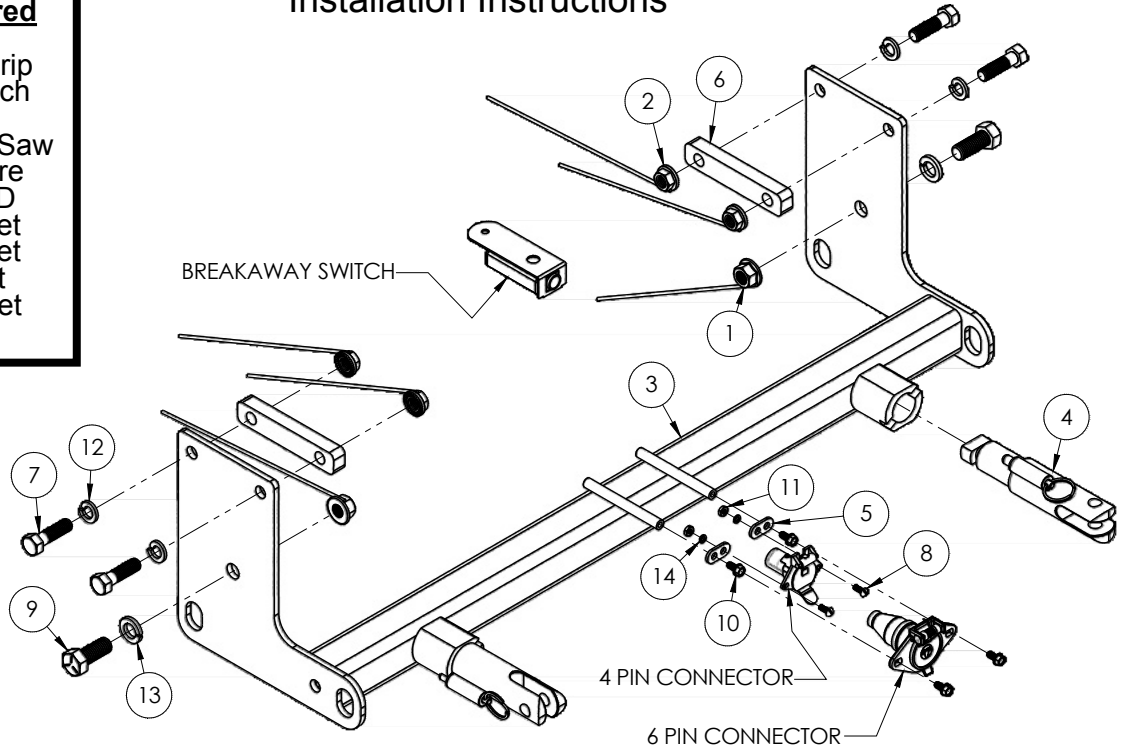
NOTICE

- Handling of some cosmetic parts when installing this product may require the use of protective covers, rags, specialty tools, etc. to prevent damage.
- When using power drills be aware of the dangers of torque and drill bit length.
- When using a reciprocating saw be aware of objects behind the cutting surface.
- Use a good quality paint to spray cut edges of frame to prevent rusting.
- Be sure that **ALL** electrical connections are plugged in and accessories are functioning properly before reinstalling the fascia.
- The baseplate is computer tested to your vehicle's GVWR, exceeding this weight will void the manufacturer's warranty.
- Be sure to use Loctite® Red on all bolts before tightening. Tighten all bolts according to the torque chart provided.
- Dealer or installer be certain the user receives these instruction sheet.
- If the baseplate is in an accident, it must be replaced. **DO NOT** use it again! An accident can cause unseen damage and using it again could result in more damage or serious injury. **DO NOT** use the baseplate if it is damaged or missing parts.

BX1134
 2013 Jeep Wrangler Rubicon 10th Anniversary Edition
 2014 Jeep Wrangler Rubicon X
 2013 Jeep Wrangler Rubicon w/ ARB Stubby Bar
 Installation Instructions

Tools Required

Large Vise Grip
 Torque Wrench
 Drill
 Reciprocating Saw
 Tape Measure
 Loctite® RED
 15MM Socket
 18MM Socket
 3/4" Socket
 15/16" Socket

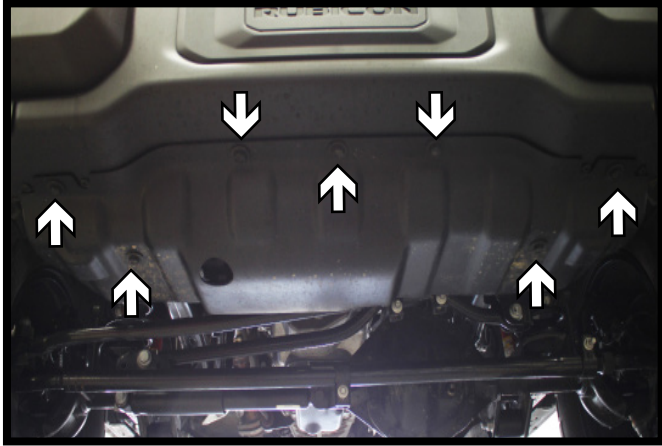


Item No.	Part No.	Description	Qty.
1	61-3997	5/8"-11 Nut Wire	2
2	61-4029	1/2"-13 Whiz Nut w/14" Wire	4
3	61-7219	BX1134 Baseplate	1
4	62-3468	Attachment Tab Assembly, SF/SB (R)	2
5	101-5822	4-Way Connector Adapter	2
6	102-6768	Spacer Plate	2
7	201-0068	1/2"-13 x 1-3/4" Hex Head Bolt, Grade 5, ZP	4
8	201-0192	#10-32 x 1/2" Round Head Slot Screw	2
9	201-0350	5/8"-11 x 1-1/2" Hex Head Bolt, Grade 5, ZP	2
10	201-0553	1/4"-20 x 1/2" Hex Wshd, Type F Screw	2
11	202-0047	#10-32 Hex Nut	2
12	203-0012	1/2" Lock Washer, ZP	4
13	203-0013	5/8" Lock Washer, ZP	2
14	203-0054	#10 Lock Washer	2
15	226-0049(not shown)	Class IV Safety Cables	2
16	229-0512(not shown)	1/2" Quicklink, ZP	2
17	290-0437(not shown)	Black Cap Plug Receiver	2
18	293-1339 (not provided)	Breakaway Switch	1
19	294-0805 (not provided)	4 Pin Connector	1
20	294-0902 (not provided)	6 Pin Connector	1

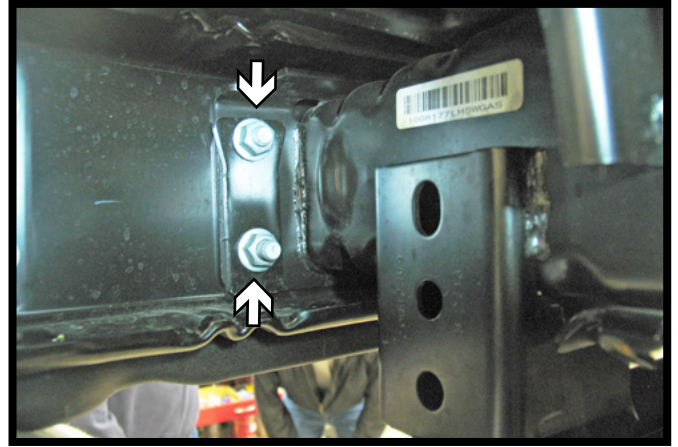
Important:

Use only genuine factory replacement parts on your baseplate. Do NOT substitute homemade or non-typical parts. If a bolt is lost or in need of replacement, for your safety and the preservation of your baseplate, be sure to use a replacement bolt of the same grade (In most cases it will be Grade 5, please reference the parts list above). Replacement parts may be ordered through your nearest Blue Ox® Dealer or Distributor. Failing to follow and/or altering these installation instructions in either installation or required equipment will void the manufacturer's warranty.

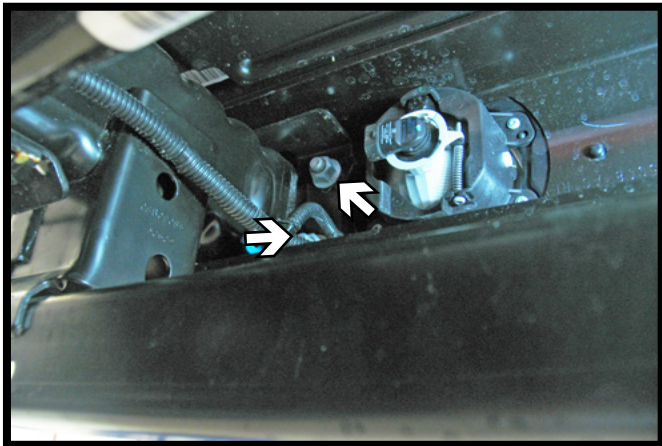
BX1134
2013 Jeep Wrangler Rubicon 10th Anniversary Edition
2014 Jeep Wrangler Rubicon X
2013 Jeep Wrangler Rubicon w/ ARB Stubby Bar
Installation Instructions



1. Using a 15MM socket, remove the seven (7) bolts from the bottom of the belly pan. There are two (2) on each side and three (3) across the center.



2. Disconnect the foglights from back side of metal bumper. Using the 18MM socket, remove the two (2) metric bolts on outside edge of frame. Do this to both sides of vehicle.

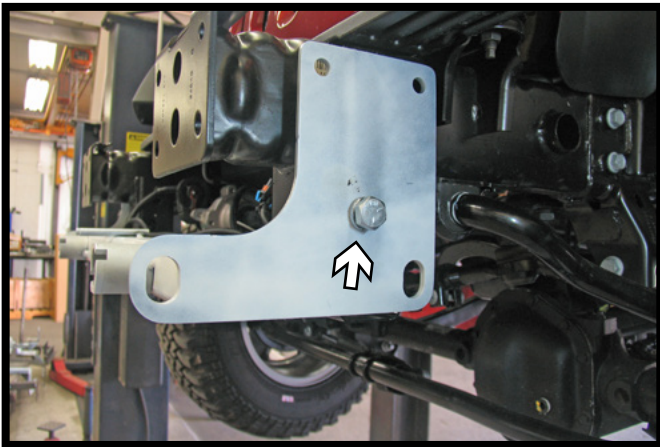


3. Using an 18MM socket, remove the two (2) metric bolts on inside edge of frame. Do this to both sides of the vehicle.

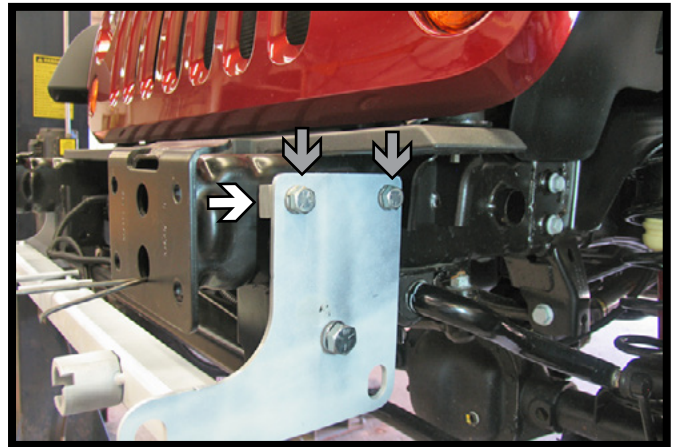


4. Trim the belly pan as shown. Using a reciprocating saw, cut 2-1/2" inward and downward 7-3/4" to allow proper clearance for the baseplate.

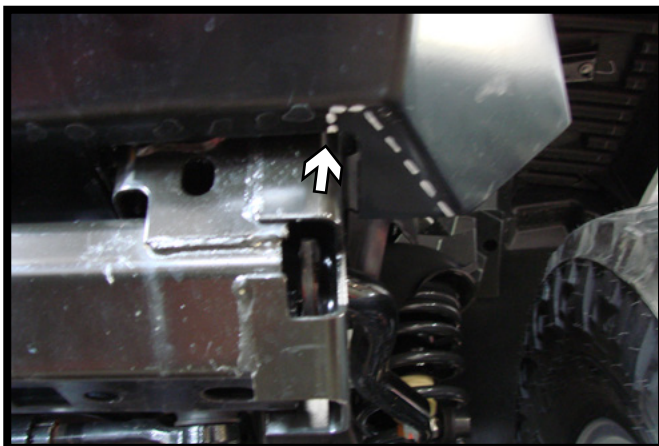
BX1134
2013 Jeep Wrangler Rubicon 10th Anniversary Edition
2014 Jeep Wrangler Rubicon X
2013 Jeep Wrangler Rubicon w/ ARB Stubby Bar
Installation Instructions



5. Position the baseplate onto the vehicle. Install a 5/8"-11 x 1-1/2" bolt and 5/8" lock washer into the lower hole. Level and clamp the baseplate securely. Install a 5/8"-11 whiz nut onto the bolt and tighten down. Do this to both sides of the vehicle.



6. Using the baseplate as a template, drill the remaining holes into the frame with the 17/32" drill bit. Insert the 1/2"-13 whiz nut into the frame end and align with drilled holes. Install the spacer plate between the baseplate and the frame (see white arrow) and install 1/2"-13 x 1-3/4" hex bolts and 1/2" lock washers and tighten to whiz nuts (see gray arrows). Do this to both sides of the vehicle.



7. **ARB Stubby Bumper Only:** Mark the under side of the bumper as shown (left). Using a reciprocating saw trim the under side of the bumper to clear the baseplate (right). Do this on both sides of the bumper.

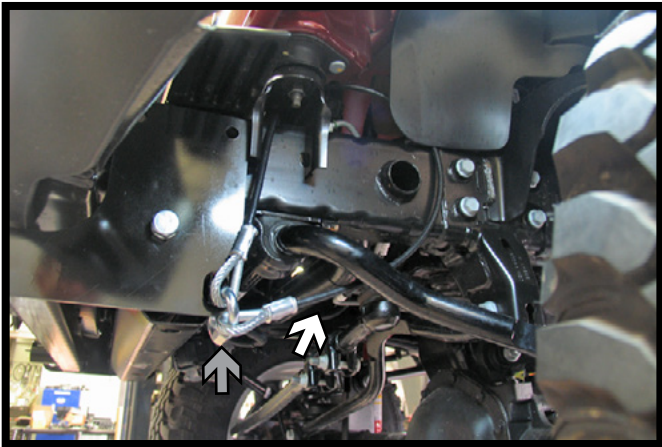
BX1134

2013 Jeep Wrangler Rubicon 10th Anniversary Edition

2014 Jeep Wrangler Rubicon X

2013 Jeep Wrangler Rubicon w/ ARB Stubby Bar

Installation Instructions



8. Attach the permanent baseplate safety cables to the provided convenience link on the baseplate (gray arrow). The photo shows the recommended installation of the cables to frame of vehicle (white arrow). Additional options may interfere with suggested mounting; in this case secure the cables to a solid piece of the frame as described in the instructions included with the permanent baseplate safety cables. Be sure the safety cables do not rub against any hoses or moving parts. Do this to **BOTH** sides of the vehicle.

NOTE: It may be easier to attach the cables if done prior to installing the baseplate.

9. Reinstall the bumper.

CUSTOMER SERVICE COMMITMENT

Blue Ox® is committed to providing you with exceptional customer care throughout your lifetime with our products. Our team is here to assist you with any questions you may have regarding the performance of your product. Simply call (402) 385-3051 and you can speak with our customer care team.

Additionally, please visit our website to see which rallies our Destination America team will be attending. For a nominal fee, our service technician will service your towing system to ensure it's in proper working condition. Also, as a commitment to our customers, should you visit our factory, you can stay at our full service Blue Ox® campground at no charge along with enjoying a factory tour.

Again, thank you for being our customer and for the confidence you have shown in the performance of our products. It is because of customers like you we enjoy the success we have today.

© 2013 Blue Ox
One Mill Road, Industrial Park
Pender, Nebraska 68047
Phone: (402) 385-3051
Fax: (402) 385-3360
www.blueox.com