



BX1690

2010-12 Cadillac SRX4 Installation Instructions

Serial Number

Attachment Tab Height: 16-1/2"

Attachment Tab Width: 18"

Please read BOTH these Installation Instructions and the General Instructions prior to installing or operating this equipment.

- Blue Ox® towing products and accessories are intended to be installed by Blue Ox® Dealers who are familiar with our products and have the equipment and knowledge necessary to do "fit work". If needed, Blue Ox® Dealers can be found at www.blueox.com or by contacting our Customer Care Department at (402) 385-3051.
- Many Blue Ox® baseplates are designed to use existing holes and hardware to mount the baseplate to the towed vehicle. Even though bolts are there, do not assume they are adequate for baseplate mounting. Always use the hardware supplied in the hardware kit and existing hardware as specified in the installation instructions.

Bolt Torque Specifications
Torque in Foot-Pounds for Metric Bolts

Bolt Size	Grade 8.8	Grade 10.9
6MM	6	8
8MM	16	22
10MM	31	40
12MM	54	70
14MM	89	117

Bolt Torque Specifications
Torque in Foot-Pounds for Inch Bolts

Bolt Size	Grade 5	Grade 8
1/4"	10	14
5/16"	19	29
3/8"	33	47
7/16"	54	78
1/2"	78	119
5/8"	154	230



If the front of your vehicle looks different than this, please contact us at (402)385-3051.

Reference your vehicle owner's manual for manufacturer's towing specifications.

! WARNING

Failure to read and follow these instructions could result in separation of the towed vehicle from the tow bar, causing property damage, loss of towed vehicle, personal injury or death.

BX1690
2010-12 Cadillac SRX4
Installation Instructions

Vehicle Weight: Motorhome mount tow bars are recommended for use with this baseplate. Due to the design of the removable tabs, the RangeFinderII, Adventurer and Ambassador tow bars can not be used. The Acclaim tow bar may be used, but will not fold and store on the front of the vehicle. Adapters, except the BX8833 and BX88151, can not be used with this baseplate.

Instruction Notes: The fascia, air baffle, coolant lines and temperature sensor are removed and reinstalled for the baseplate installation. Some drilling and trimming is required.

Place all components that are removed on a flat, sturdy surface. All items will be reinstalled unless otherwise noted after the baseplate is installed.

The dimensional variations between otherwise identical vehicles can be considerable. While the baseplate was designed for easy installation, it may be necessary to tailor the baseplate slightly to compensate for vehicle manufacturer's tolerances.

The BX8848 4-Diode Tail Light Wiring Kit is recommended for this vehicle.

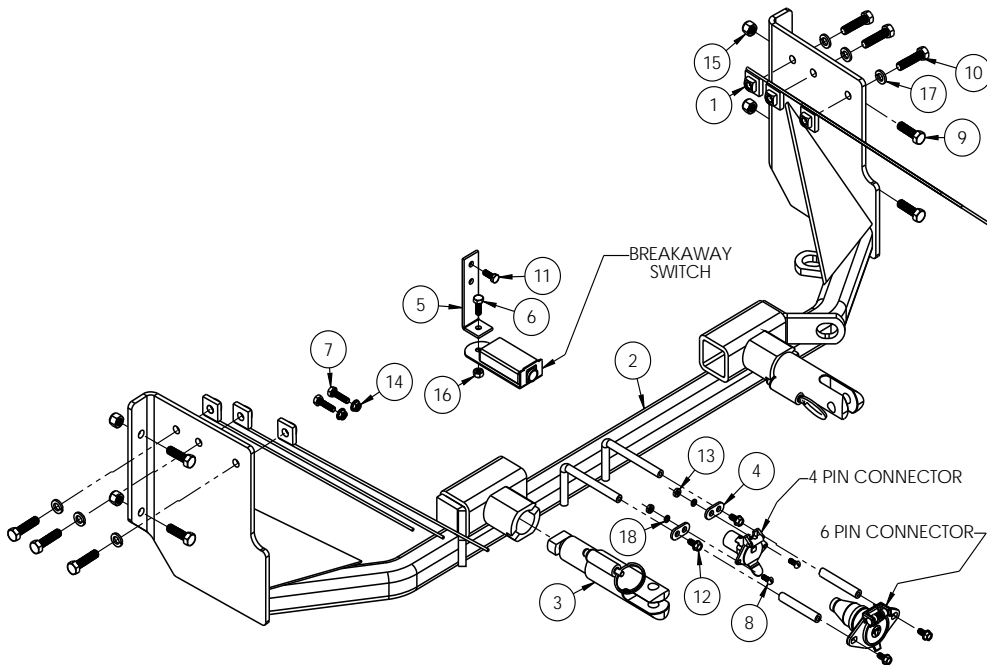
NOTICE

- Handling of some cosmetic parts when installing this product may require the use of protective covers, rags, specialty tools, etc. to prevent damage.
- When using power drills be aware of the dangers of torque and drill bit length.
- Be sure that **ALL** electrical connections are plugged in properly and functioning before reinstalling the fascia.
- Do not use the towed vehicle for storing luggage, equipment, etc. This may cause you to exceed the towing capacity of the tow bar, baseplate and its accessories.
- Be sure to use Loctite® Red on all bolts before tightening. Tighten all bolts according to the torque chart provided.
- Dealer or installer be sure customer receives these instructions.

BX1690

2010-12 Cadillac SRX4

Installation Instructions



Tools Required

- Large Vise Grip
- Flat Screwdriver
- Phillips Screwdriver
- Utility Knife
- Torque Wrench
- Drill
- Tape Measure
- Loctite® RED
- 1/4" Drill Bit
- 13/32" Drill Bit
- 1-1/4" Hole Saw
- 7MM Socket
- 10MM Socket
- 9/16" Socket
- 9/16" Wrench

Item No.	Part No.	Description	Qty.
1.....	61-5208.....	3/8"-16 Nut Plate w/ 14" Wire.....	6
2.....	61-7068.....	BX1690 Baseplate.....	1
3.....	62-3468.....	Attachment Tab.....	2
4.....	101-5822.....	4 Way Connector Adapter.....	2
5.....	102-7186.....	Breakaway Bracket.....	1
6.....	201-0050.....	1/4"-20 x 3/4" Hex Head Bolt, Grade 5, ZP.....	1
7.....	201-0071.....	1/4"-20 x 1" Hex Head Bolt, Grade 5, ZP.....	2
8.....	201-0192.....	#10-32 x 1/2" Slotted Round Head Screw.....	2
9.....	201-0368.....	3/8"-16 x 1-1/4" Hex Head Bolt, Grade 5.....	4
10.....	201-0440.....	3/8"-16 x 1-1/2" Hex Head Bolt, Grade 5, ZP.....	6
11.....	201-0461.....	6MM-1.0 x 16MM Hex Cap Bolt, Grade 8.8, ZP.....	1
12.....	201-0553.....	1/4"-20 x 1/2" Hex Wshd Type F TCS Screw, ZP.....	2
13.....	202-0047.....	#10-32 Hex Nut.....	2
14.....	202-0069.....	1/4"-20 Hex Flange Whiz Lock Nut, ZP.....	2
15.....	202-0090.....	3/8"-16 Hex Nylon Insert Lock Nut, ZP.....	4
16.....	202-0102.....	1/4"-20 Hex Nylon Nut, ZP.....	1
17.....	203-0010.....	3/8" Lock Washer, ZP.....	6
18.....	203-0054.....	#10 Lock Washer.....	2
19.....	226-0046(not shown).....	Class III Safety Cables.....	2
20.....	229-0512(not shown).....	1/2" Quicklink, ZP.....	2
21.....	290-0437(not shown).....	Black Cap Plug Receiver.....	2
22.....	293-1339(not provided).....	Breakaway Switch.....	1
23.....	294-0805(not provided).....	4 Pin Connector.....	1
24.....	294-0902(not provided).....	6 Pin Connector.....	1

Important:

Use only genuine factory replacement parts on your baseplate. Do **NOT** substitute homemade or non-typical parts. If a bolt is lost or in need of replacement, for your safety and the preservation of your baseplate, be sure to use a replacement bolt of the same grade (In most cases it will be Grade 5, please reference the parts list above). Replacement parts may be ordered through your nearest Blue Ox® Dealer or Distributor. Failing to follow and/or altering these installation instructions in either installation or required equipment will void the manufacturer's warranty. Towing behind a non-motorized vehicle will void the warranty.

BX1690
2010-12 Cadillac SRX4
Installation Instructions



1. Remove the two (2) push pins on each side from the top edge of the fascia. Do this to both sides of the vehicle.



2. Remove the push pins from the center of the front.



3. Remove the rubber piece across the top by pulling it to unhook it. Push hard on both sides to release the christmas tree clip.

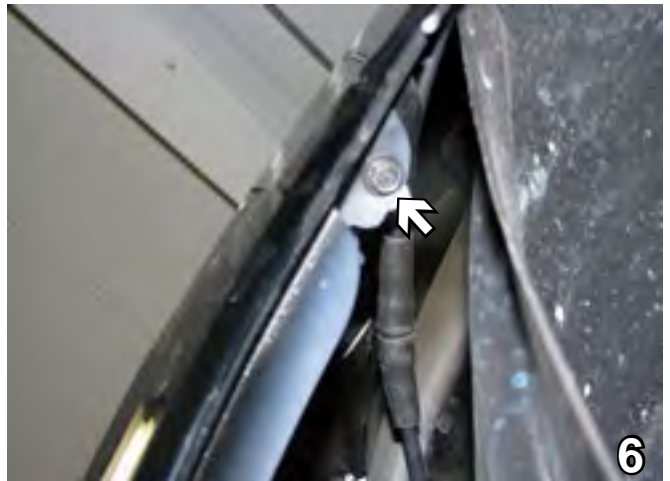


4. Using a 10MM socket, remove seven (7) bolts across the top, three (3) per side and one (1) in the middle.

BX1690
2010-12 Cadillac SRX4
Installation Instructions



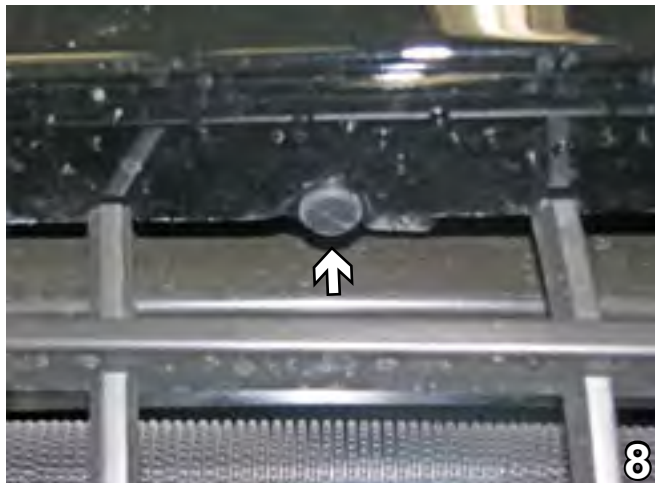
5. Using a Phillips screwdriver, remove four (4) screws just forward of the front tire on the edge of the wheel well. Do this to both sides of the vehicle.



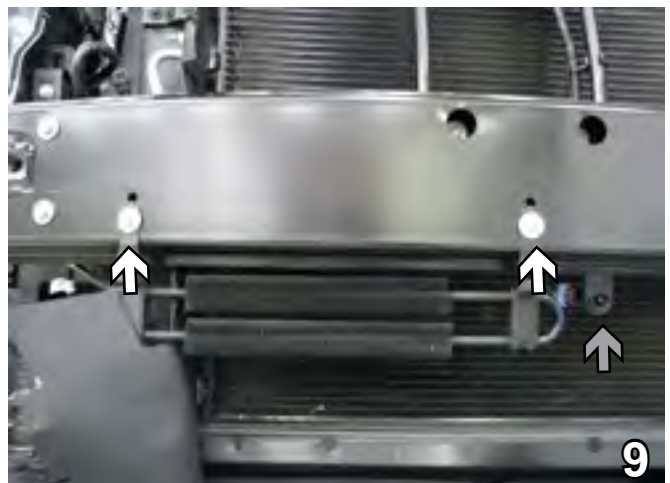
6. Pull the wheel well cover back, using a 7MM socket remove one (1) bolt from the inside corner of the fascia. Do this to both sides of the vehicle.



7. Using a 7MM socket, remove twelve (12) bolts across the bottom of the belly pan.

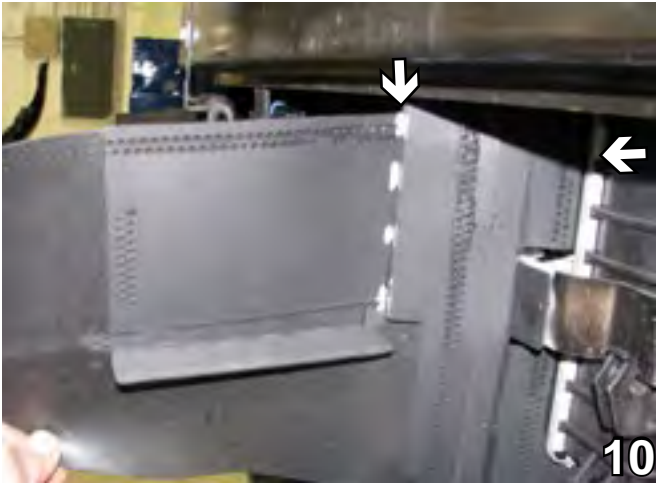


8. Remove two (2) push pins in the front, one (1) per side. Pull fascia forward and set aside carefully.

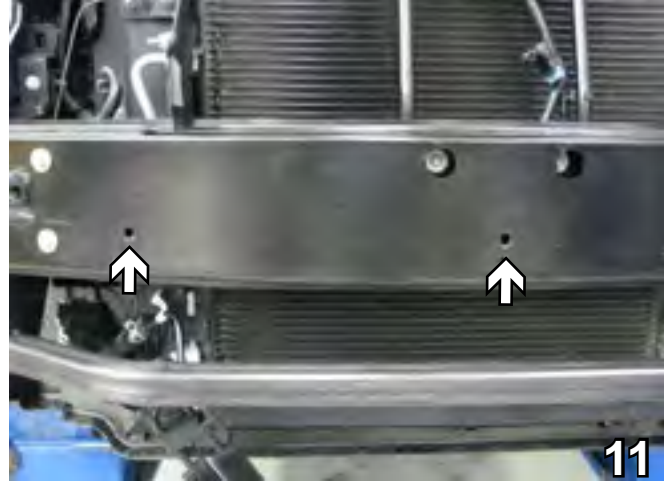


9. Using a 10MM socket, remove the two (2) bolts and the coolant line. Remove the push pin from the backside of the temperature sensor (gray arrow). Both will be relocated later.

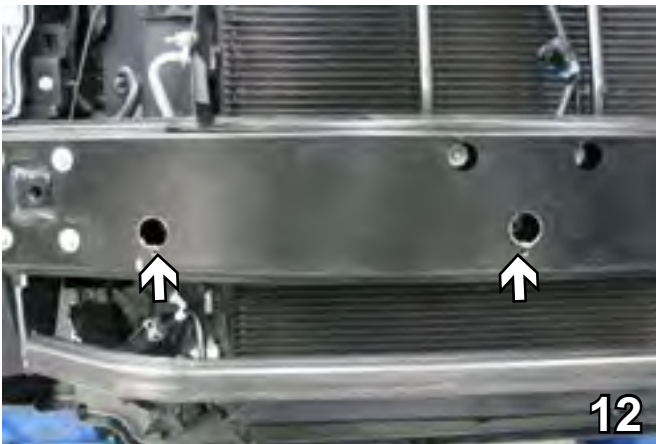
BX1690
2010-12 Cadillac SRX4
Installation Instructions



10. Trim the plastic, cut straight down along the seam and straight back under the bumper. Do this on both sides.



11. Using a 1/4" drill bit, drill into the holes left by the removal of the coolant line bolts through the back side of the bumper.



12. Using the 1-1/4" hole saw, drill out the holes for the insertion of the nut plates. Reattach the coolant line to the back holes using 1/4"-20 x 1/2" hex bolts and 1/4"-20 whiz nuts.

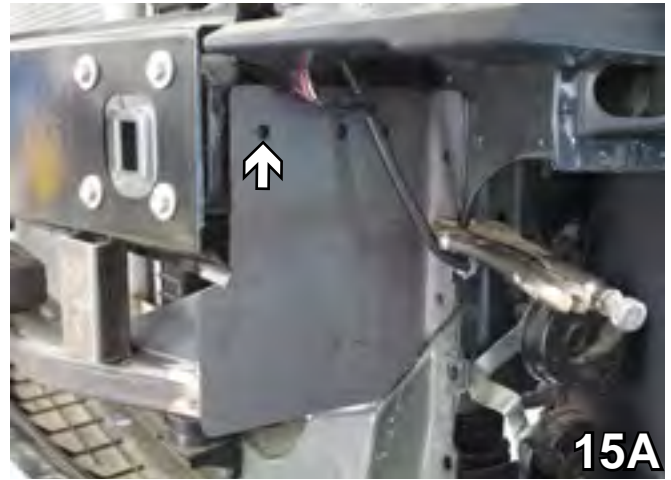


13. On the passenger side, on top where the wires have been removed, using a 1-1/4" hole saw, drill an access hole through two (2) layers.

BX1690
2010-12 Cadillac SRX4
Installation Instructions

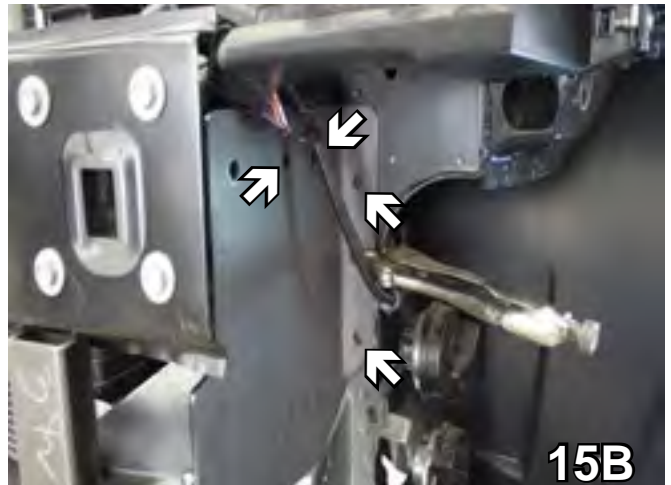


14. Slide the baseplate straight up, from the top of the frame down toward the baseplate should be 3-1/2". It should be as far forward as possible until it makes contact and is level with the vehicle frame. Do this on both sides.



15A

15. Using the baseplate as a template drill through with a 13/32" drill bit. Drill the first hole on each side. Insert a 3/8"-16 x 1-1/2" bolt, 3/8" lock washer and 3/8"-16 nut plate.(15A) Be sure the baseplate is level. Drill the remaining holes and insert appropriate hardware.(15B) Do this on both sides of the vehicle.



15B

16. Attach the permanent baseplate safety cables to the provided convenience link on the baseplate. Additional options may interfere with suggested mounting; in this case secure the cables to a solid piece of the frame as described in the instructions included with the permanent baseplate safety cables. Be sure the safety cables do not rub against any hoses or moving parts. Do this to both sides of the vehicle.



17

17. Zip tie the temperature sensor to the radiator.

BX1690
2010-12 Cadillac SRX4
Installation Instructions



Shown without removable tabs installed.



Shown with removable tabs installed.

If the baseplate is in an accident, it must be replaced. DO NOT use it again! An accident can cause unseen damage and using it again could result in more damage or serious injury. DO NOT use the baseplate if it is damaged or missing parts.

CUSTOMER SERVICE COMMITMENT

Blue Ox® is committed to providing you with exceptional customer care throughout your lifetime with our products. Our team is here to assist you with any questions you may have regarding the performance of your product. Simply call (402) 385-3051 and you can speak with our customer care team.

Additionally, please visit our website to see which rallies our Destination America team will be attending. For a nominal fee, our service technician will service your towing system to ensure it's in proper working condition. Also, as a commitment to our customers, should you visit our factory, you can stay at our full service Blue Ox® campground at no charge along with enjoying a factory tour.

Again, thank you for being our customer and for the confidence you have shown in the performance of our products. It is because of customers like you we enjoy the success we have today.

© 2012 Blue Ox
One Mill Road, Industrial Park
Pender, Nebraska 68047
Phone: (402) 385-3051
Fax: (402) 385-3360
www.blueox.com