



BX1843

2005-11 Nissan Frontier 2008-12 Nissan Pathfinder Installation Instructions

Serial Number

Attachment Tab Height: 12-1/2"

Attachment Tab Width: 33-1/2"

Please read BOTH these Installation Instructions and the General Instructions prior to installing or operating this equipment.

- Blue Ox® towing products and accessories are intended to be installed by Blue Ox® Dealers who are familiar with our products and have the equipment and knowledge necessary to do "fit work". If needed, Blue Ox® Dealers can be found at www.blueox.com or by contacting our Customer Care Department at (402) 385-3051.
- Many Blue Ox® baseplates are designed to use existing holes and hardware to mount the baseplate to the towed vehicle. Even though bolts are there, do not assume they are adequate for baseplate mounting. Always use the hardware supplied in the hardware kit and existing hardware as specified in the installation instructions.

Bolt Torque Specifications
Torque in Foot-Pounds for Metric Bolts

Bolt Size	Grade 8.8	Grade 10.9
6MM	6	8
8MM	16	22
10MM	31	40
12MM	54	70
14MM	89	117

Bolt Torque Specifications
Torque in Foot-Pounds for Inch Bolts

Bolt Size	Grade 5	Grade 8
1/4"	10	14
5/16"	19	29
3/8"	33	47
7/16"	54	78
1/2"	78	119
5/8"	154	230



If the front of your vehicle looks different than this, please contact us at (402)385-3051.

Reference your vehicle owner's manual for manufacturer's towing specifications.

! WARNING

Failure to read and follow these instructions could result in separation of the towed vehicle from the tow bar, causing property damage, loss of towed vehicle, personal injury or death.

BX1843
2005-11 Nissan Frontier
2008-12 Nissan Pathfinder
Installation Instructions

Instruction Notes: The grill, fascia and bumper are removed and reinstalled for the baseplate installation. Some drilling and trimming is required.

Place all components that are removed on a flat, sturdy surface. All items will be reinstalled unless otherwise noted after the baseplate is installed.

The dimensional variations between otherwise identical vehicles can be considerable. While the baseplate was designed for easy installation, it may be necessary to tailor the baseplate slightly to compensate for vehicle manufacturer's tolerances.

The BX8869 Tail Light Wiring Kit is recommended for this vehicle.



Drill a hole according to the tail
light wiring kit instructions.

NOTICE

- Handling of some cosmetic parts when installing this product may require the use of protective covers, rags, specialty tools, etc. to prevent damage.
- When using power drills be aware of the dangers of torque and drill bit length.
- Be sure that **ALL** electrical connections are plugged in properly and functioning before reinstalling the fascia.
- Do not use the towed vehicle for storing luggage, equipment, etc. This may cause you to exceed the towing capacity of the tow bar, baseplate and its accessories.
- Be sure to use Loctite® Red on all bolts before tightening. Tighten all bolts according to the torque chart provided.

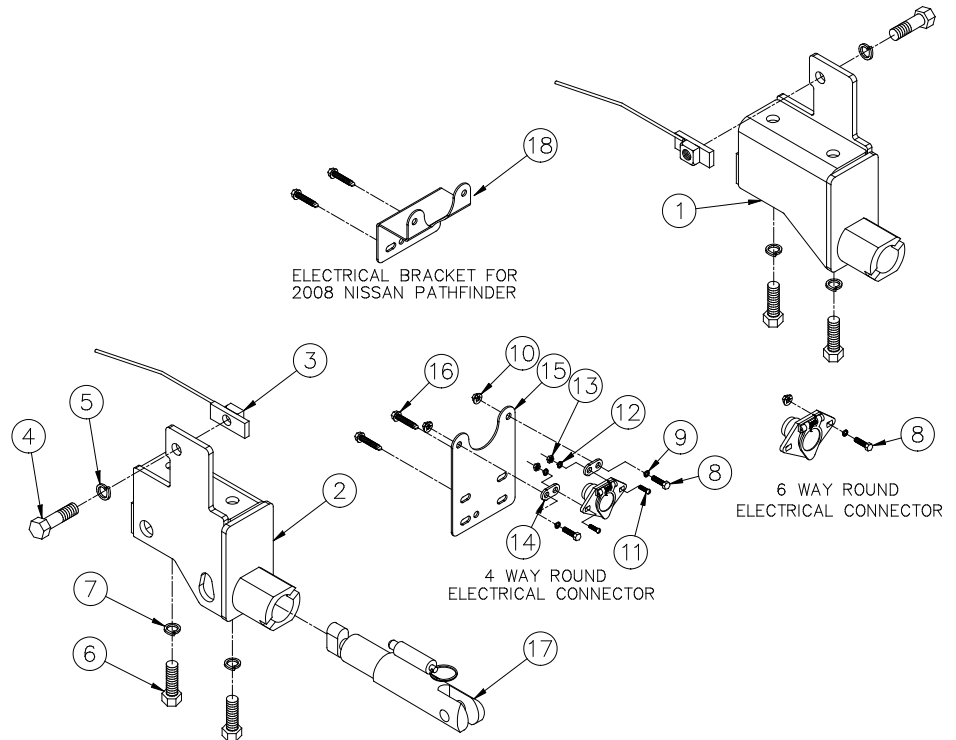
BX1843

2005-11 Nissan Frontier 2008-12 Nissan Pathfinder

Installation Instructions

Tools Required

Large Vise Grip
 Flat Screwdriver
 Utility Knife
 Phillips Screwdriver
 Torque Wrench
 Drill
 Tape Measure
 Loctite® RED
 17/32" Drill Bit
 1-1/8" Hole Saw
 10MM Socket
 17MM Socket
 19MM Socket
 7/16" Socket
 3/4" Socket
 5/16" Nut Driver

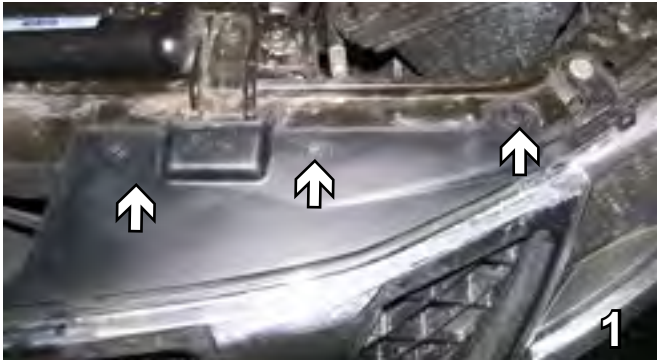


Item No.	Part No.	Description	Qty.
1.....	61-6130	BX1843 Baseplate, DS.....	1
2.....	61-6131	BX1843 Baseplate, PS.....	1
3.....	61-3799	1/2"-13 Nut Plate, w/10" Wire	2
4.....	201-0051	1/2"-13 x 1-1/2" Hex Head Bolt, Grade 5, ZP	2
5.....	203-0012	1/2" Lock Washer, ZP	2
6.....	201-0411	12MM-1.25 x 40MM Hex Head Bolt, Grade 8.8, ZP.....	4
7.....	203-0105	12MM Lock Washer, ZP	4
8.....	201-0050	1/4"-20 x 3/4" Hex Head Bolt, Grade 5, ZP	2
9.....	203-0008	1/4" Lock Washer, ZP	2
10.....	202-0069	1/4"-20 Hex Flange Whiz Lock Nut, ZP	2
11.....	201-0192	#10-32 x 1/2" Round Slot Head Screw	2
12.....	203-0054	#10 Lock Washer.....	2
13.....	202-0047	#10-32 Hex Nut	2
14.....	101-5822	4 Way Connector Adapter	2
15.....	101-6739	BX2908 Electrical Bracket.....	1
16.....	201-0654	#10-16 x 1" Self Drilling Screw, ZP.....	2
17.....	62-3468	Attachment Assembly, SF/SB (R).....	2
18.....	101-7202	BX1843 Electrical Bracket.....	1
19.....	226-0046(not shown)	Class III Safety Cables	2
20.....	229-0359(not shown)	3/8" Quicklink, ZP	2
21.....	290-0437(not shown)	Black Cap Plug Receiver.....	2

Important:

Use only genuine factory replacement parts on your baseplate. Do **NOT** substitute homemade or non-typical parts. If a bolt is lost or in need of replacement, for your safety and the preservation of your baseplate, be sure to use a replacement bolt of the same grade (In most cases it will be Grade 5, please reference the parts list above). Replacement parts may be ordered through your nearest Blue Ox® Dealer or Distributor. Failing to follow and/or altering these installation instructions in either installation or required equipment will void the manufacturer's warranty.

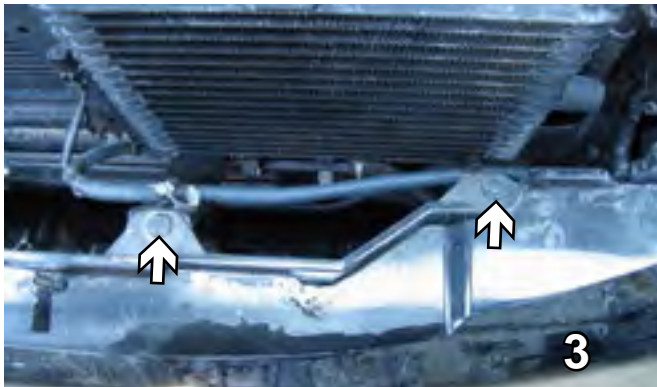
BX1843
2005-11 Nissan Frontier
2008-12 Nissan Pathfinder
Installation Instructions



1. Using a flat screwdriver, remove three push pins from the flat plastic piece on top of the fascia. Do this on both sides. Set push pins aside to be reinstalled later.



2. To remove the grille, reach in and push up on each clip. There are two on each side. Do this to both sides and remove the grille. Set aside grille and bolts for later reinstallation.



3. Underneath where the grille was, remove the three push pins. Set the push pins aside for later reinstallation.



4. Just forward of the front tires are two (2) screws to remove with a Phillips screwdriver. Do this to both sides of the vehicle. Set screws aside to be reinstalled later.

BX1843
2005-11 Nissan Frontier
2008-12 Nissan Pathfinder
Installation Instructions



5. Underneath the front fascia remove the three (3) bolts using a 10MM socket. Do this on both sides. Remove the lower fascia piece and set it and the bolts aside for later reinstallation.



6. Just under the lower fascia piece are two (2) metric bolts to remove. Do this on both sides. Set bolts aside for later reinstallation.

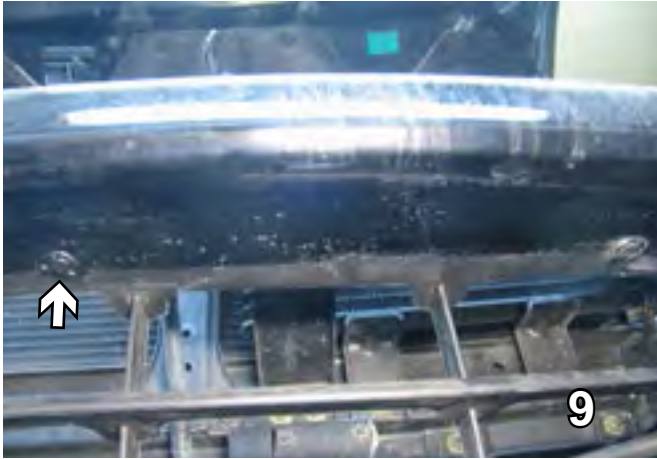


7. On the back side of the rubber cover in front of the tire, remove the two (2) screws using a Phillips screwdriver. Do this on both sides and set aside for later reinstallation.



8. On the front, inside the grille, turn the square pin toward the center of the vehicle. Do this to both sides of the vehicle. Set pin aside to be reinstalled later. (Not necessary on 2012 Models)

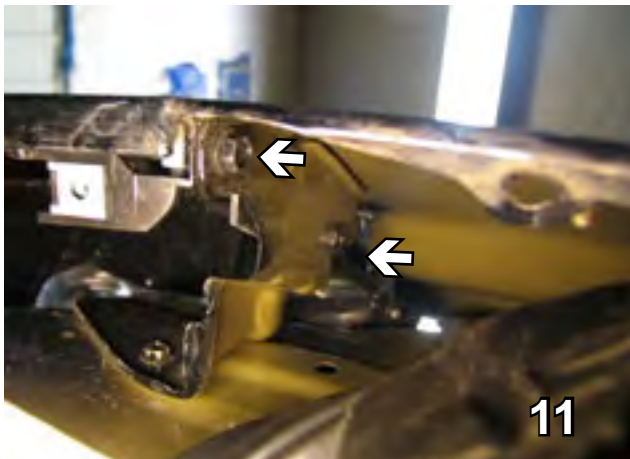
BX1843
2005-11 Nissan Frontier
2008-12 Nissan Pathfinder
Installation Instructions



9. On the top side of the fascia's opening are three (3) push pins to remove with the Phillips screwdriver. Unplug the running lights and set aside. Pull the fascia corners out to the side of the vehicle, both sides, then pull fascia forward and set aside carefully for later reinstallation.



10. Using the 10MM socket, remove the two front metric bolts from the belly pan that bolt into the bottom of the metal bumper.



11. Pull wheel well plastic back and remove two (2) metric hex nuts from just above front tire where the fascia meets the fender with the 10MM socket. Do this on both sides. Set nuts aside for later reinstallation.



12. Remove the metric bolts from the metal bumper with the 17MM socket. Do this on both sides. Set metal bumper and bolts aside to be reinstalled later.

BX1843
2005-11 Nissan Frontier
2008-12 Nissan Pathfinder
Installation Instructions



13. Remove the two (2) metric bolts from the tow hook on the passenger's side only using the 17MM socket. **The tow hook will NOT be reinstalled.**



14. On the driver's side, cut a hole into the end of the frame cap connected with the upper existing hole, using the 1 1/4" hole saw, for the nut plates to go through.



15. Using the vise grip bend the frame support, approximately 1/2" up from the bottom, back and fourth until it snaps off on both the front and back supports. Do this on both sides. (15A)
On 2011-12 Models: In addition to front and back supports, snap off the area in front of the supports for additional baseplate clearance. Do this on both sides (15B)

Align the baseplate on the passenger's side with the existing holes for the tow hook, tighten the 2MM-1.25 hex bolts and 12MM lock washers into existing holes. Install baseplate in the same location on the driver's side

BX1843
2005-11 Nissan Frontier
2008-12 Nissan Pathfinder
Installation Instructions



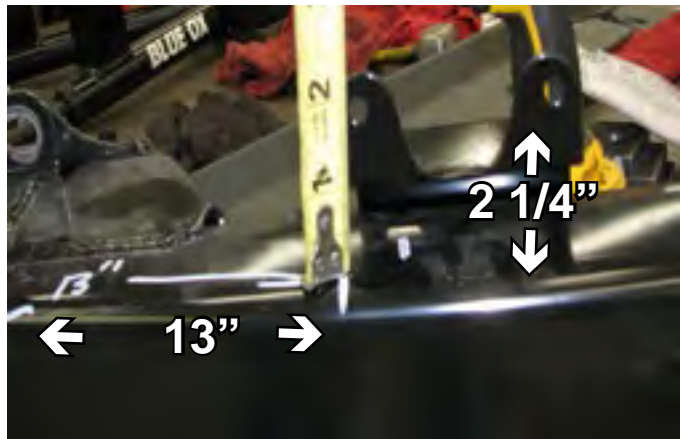
16. Using the baseplate as a template, drill a hole into the side of the frame rail with the 17/32" drill bit. Do this on both sides.



17. Insert the nut plate into the drilled hole on the frame cap to align with the drilled hole, tighten the 1/2"-13 hex bolt and 1/2" lock washer into the drilled hole. Repeat on other side. Be sure and use Loctite Red on all bolts before tightening.

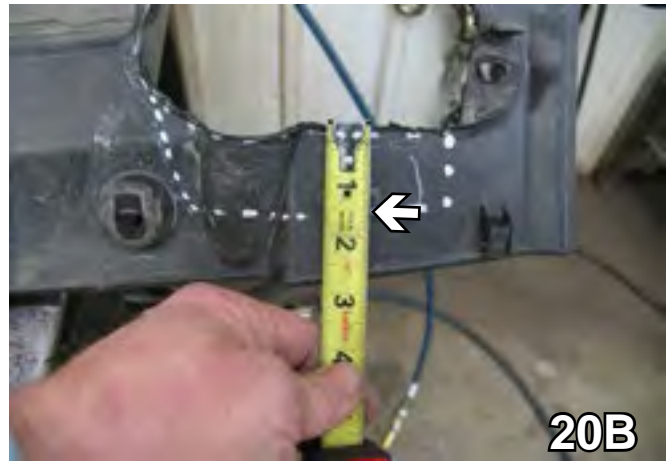


18. Attach the permanent baseplate safety cables to the provided convenience link on the baseplate. The photo above shows the recommended installation of the cables to frame of vehicle (see white arrow). Additional options may interfere with suggested mounting; in this case secure the cables to a solid piece of the frame as described in the instructions included with the permanent baseplate safety cables. Be sure the safety cables do not rub against any hoses or moving parts. Do this to both sides of the vehicle.



19. Set the metal bumper on a bench, clamp the electrical bracket to the back of the driver's side with the vise grip. The bracket should measure 13" from the driver's end of the metal bumper and 2 1/4" from the top edge of the bumper to the top hole location. Attach the bracket with the two (2) #10-16 self drilling screws using the 5/16" nut driver. Reinstall the metal bumper with the existing metric bolts. Do this on both sides.

BX1843
2005-11 Nissan Frontier
2008-12 Nissan Pathfinder
Installation Instructions



20. Using the utility knife, cut the lower fascia piece where the tow hooks come through, on the driver's side cut the lip and the whole circle out like on the passenger side. Continue to trim an additional 1 1/2" straight down and next to the opening. This will allow the baseplate to come through the lower fascia opening.

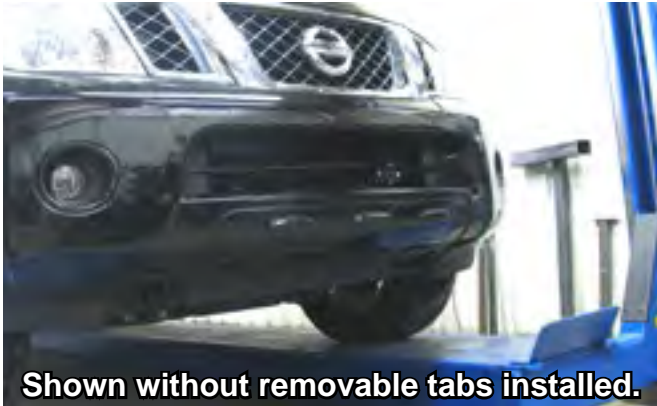


21. Take the clips from the frame and put them back on the grille. Replace the grille. It will snap right in. Do this on both sides.

22. Reinstall the fascia. **Be sure all electrical components are plugged in properly.** Snap the lower fascia into place and bolt into place. Some trimming may be required for a proper fit using the utility knife.

23. Dealer or installer be certain the user receives the instruction sheet.

BX1843
2005-11 Nissan Frontier
2008-12 Nissan Pathfinder
Installation Instructions



Install the tow bar and safety cables according to the instructions provided in their packages. When demonstrating this to the customer, be sure to include all the contents and packages.

Do **NOT** substitute other devices if the tow bar pins and clips are misplaced.



If the baseplate is in an accident, it must be replaced. DO NOT use it again! An accident can cause unseen damage and using it again could result in more damage or serious injury. DO NOT use the baseplate if it is damaged or missing parts.

CUSTOMER SERVICE COMMITMENT

Blue Ox® is committed to providing you with exceptional customer care throughout your lifetime with our products. Our team is here to assist you with any questions you may have regarding the performance of your product. Simply call (402) 385-3051 and you can speak with our customer care team.

Additionally, please visit our website to see which rallies our Destination America team will be attending. For a nominal fee, our service technician will service your towing system to ensure it's in proper working condition. Also, as a commitment to our customers, should you visit our factory, you can stay at our full service Blue Ox® campground at no charge along with enjoying a factory tour.

Again, thank you for being our customer and for the confidence you have shown in the performance of our products. It is because of customers like you we enjoy the success we have today.

© 2012 Blue Ox
One Mill Road, Industrial Park
Pender, Nebraska 68047
Phone: (402) 385-3051
Fax: (402) 385-3360
www.blueox.com