

BX2251

2008-10 Honda Odyssey 2009-12 Honda Pilot EXL

Installation Instructions

Serial Number

Please read BOTH these Installation Instructions and the General Instructions before attempting to install or operate this equipment.

- Blue Ox® towing products and accessories are intended to be installed by Blue Ox® Dealers who are familiar with our products and have the equipment necessary and knowledge to do “fit work”. When necessary Blue Ox® Dealers can be found at www.blueox.com or by contacting our Customer Care Department at (402) 385-3051.
- Many Blue Ox® baseplates are designed to use existing holes and hardware to mount the baseplate to the towed vehicle. Even though bolts are there, do not assume they are adequate for baseplate mounting. Always use hardware supplied in the hardware kit and existing hardware specified in the Baseplate Installation Instructions.

Attachment Tab Height: 14-1/2”

Attachment Tab Width: 18”

Bolt Torque Specifications		
Torque in Foot-Pounds for Metric Bolts		
Bolt Size	Grade 8.8	Grade 10.9
6MM	6	8
8MM	16	22
10MM	31	40
12MM	54	70
14MM	89	117

Confirm the towability and pre-towing procedures for your vehicle with the owner’s manual or contact the vehicle’s manufacturer for specific towing procedures.

Bolt Torque Specifications		
Torque in Foot-Pounds for Inch Bolts		
Bolt Size	Grade 5	Grade 8
1/4”	10	14
5/16”	19	29
3/8”	33	47
7/16”	54	78
1/2”	78	119
5/8”	154	230

WARNING

Failure to read and follow these instructions could result in separation of the towed vehicle from the tow bar, causing property damage, loss of towed vehicle, personal injury or death.



If the front of your vehicle looks different than this, call us at (402) 385-3051.

BX2251

2008-10 Honda Odyssey 2009-12 Honda Pilot EXL

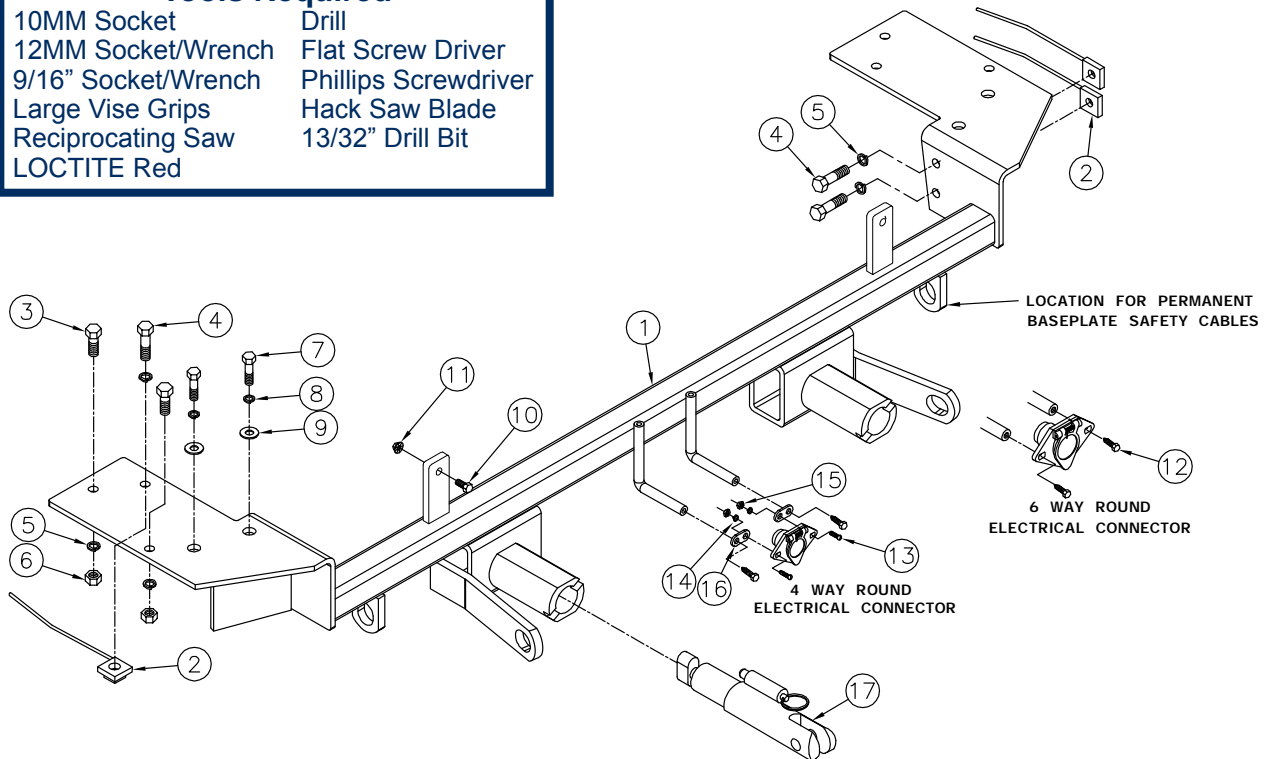
Installation Instructions

Parts List

Ref. No.	Qty.	Part #	Description
1	1	61-6716	Weldment, Baseplate, BX2251
2	6	61-5208	3/8" Nutplate, with 14" Wire
3	4	201-0443	3/8-16 x 1" Hex Bolt, Grd. 5, ZP
4	6	201-0440	3/8-16 x 1 1/2" Hex Bolt, Grd. 5, ZP
5	10	203-0010	3/8" Lock Washer, ZP
6	4	202-0003	3/8-16 Hex Nut, ZP
7	4	201-0446	8MM-1.25 x 30MM Hex Bolt, Grd. 8.8, ZP
8	4	203-0102	8MM Lock Washer, ZP
9	4	203-0003	3/8" Flat Washer, ZP
10	2	201-0050	1/4-20 X 3/4 Hex Bolt Grd.5, ZP
11	2	202-0069	1/4-20 Hex Flange Whiz Lock Nut, ZP
12	2	201-0553	1/4-20 x 1/2" Hx. Wshd, Type F Screw
13	2	201-0192	#10-32 x 1/2" Slot, Rd. Hd. Screw
14	2	203-0054	#10 Lock Washer
15	2	202-0047	#10-32 Hex Nut, ZP
16	2	101-5822	Adapter, 4 Way Connector
17	2	62-3469	ATT Tab ASSY, REM, SF/LB, 1 Hole
	2	226-0046	Baseplate Safety Cable, 36" CL III (Not Shown)
	2	229-0359	Quicklink, 3/8, ZP (Not Shown)
	2	290-0437	Cap Plug, Black (Not Shown)

Tools Required

10MM Socket	Drill
12MM Socket/Wrench	Flat Screw Driver
9/16" Socket/Wrench	Phillips Screwdriver
Large Vise Grips	Hack Saw Blade
Reciprocating Saw	13/32" Drill Bit
LOCTITE Red	



Important:

Use only genuine factory replacement parts on your baseplate. Do NOT substitute homemade or non-typical parts. If a bolt is lost or in need of replacement, for your safety and the preservation of your baseplate, be sure to use a replacement bolt of the same grade (In most cases it will be Grade 5, please reference the parts list above). Replacement parts may be ordered through your nearest Blue Ox® Dealer or Distributor, or call our Customer Care Team at (402)385-3051. Failing to follow and/or altering these installation instructions in either installation or required equipment will void the manufacturer's warranty. Towing behind a non-motorized vehicle will void the warranty.

BX2251

2008-10 Honda Odyssey 2009-12 Honda Pilot EXL

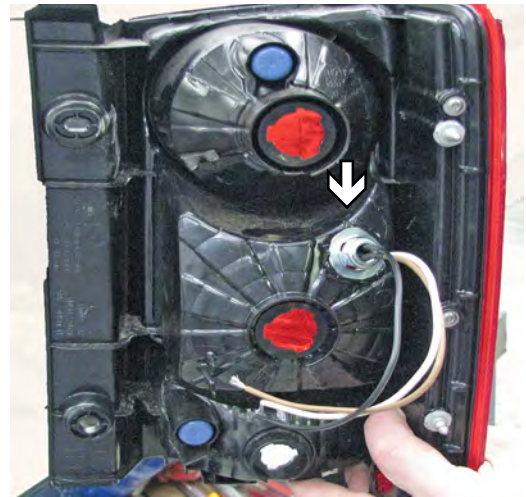
Installation Instructions

Removable Tabs: Motorhome mount tow bars are recommended for use with this baseplate. Due to the design of the removable tabs, the RangeFinderII, Adventurer, and Ambassador tow bars can not be used. The Acclaim tow bar may be used, but will not fold and store on the front of the vehicle. Adapters, except the BX8833 and BX88151, can not be used with this baseplate.

Instruction Notes: The plastic cover, front fascia, headlight assembly, and the metal bumper are removed and reinstalled for the baseplate installation. Trimming and drilling are required. The metal bumper will not be reinstalled.

The dimensional variations between otherwise identical vehicles can be considerable. While the baseplate was designed for easy installation, it may be necessary to tailor the baseplate slightly to compensate for auto manufacturer's tolerances. These minor adjustments may include filing a hole slightly, bending electrical rods or bending end plates.

The BX8869 Bulb and Socket Wiring Kit is available for this vehicle.

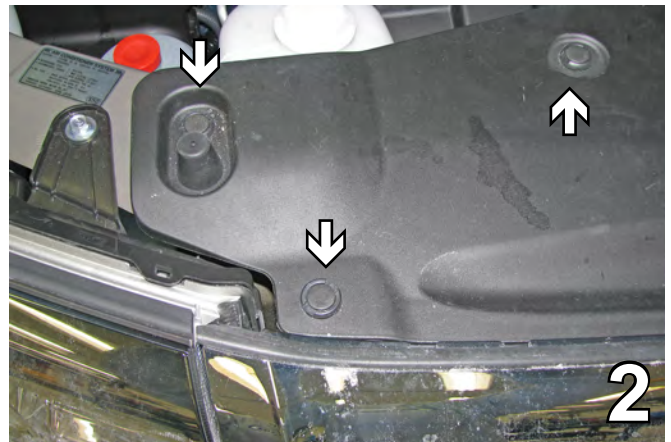
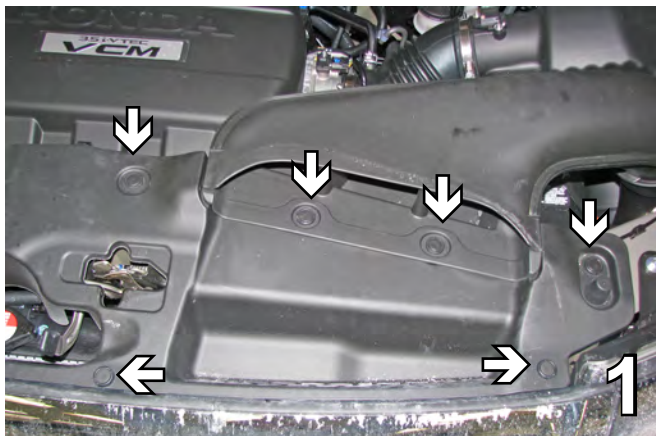


Possible location for the Bulb and Socket Wiring Kit (BX8869)

Handling of some cosmetic parts when installing this product may require the use of protective covers, rags, specialty tools, etc. to prevent damage.

Do not use the towed vehicle for storing luggage, equipment, etc. This may cause you to exceed the towing capacity of the tow bar, baseplate, and its accessories.

Installation Instructions:

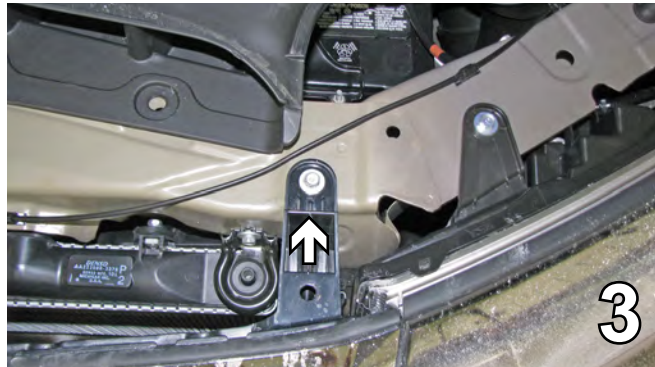


1. Remove the six push pins from the black plastic cover on the top side of the fascia.
2. Remove the three push pins from the black plastic cover on the top side of the fascia. Lift cover up to remove. Set cover and pushpins aside to be reinstalled later.

BX2251

2008-10 Honda Odyssey 2009-12 Honda Pilot EXL

Installation Instructions



- Using the 10MM socket, remove the bolt from the corner of the fascia. Do this to both sides of the vehicle. Set bolt aside to be reinstalled later.



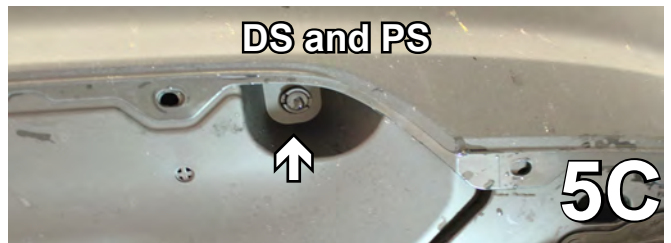
- Using the Phillips screwdriver, remove the two Phillips screws from the corner of the fascia just forward of the front tire, inside the wheel well cover. Do this to both sides of the vehicle (4A and 4B). Set screws aside to be reinstalled later.

2012 HONDA PILOT: Using the Phillips screwdriver, remove the three Phillips screws from the corner of the fascia just forward of the front tire, inside the wheel well cover. Do this to both sides of the vehicle (4C and 4D). Set screws aside to be reinstalled later.



- With a 10MM socket, remove one bolt from just forward of the front tire. Do this to both sides of the vehicle. Set bolts aside to be reinstalled later (5A).

2012 HONDA PILOT: With a 10MM socket, remove two bolts from just forward of each front tire (5B) and two bolts underneath the fascia toward the middle of the vehicle (5C).



BX2251

2008-10 Honda Odyssey

2009-12 Honda Pilot EXL

Installation Instructions



6. Remove the six pushpins from the lower edge of the fascia and the belly pan. Pull the fascia forward to remove. Set the pushpins and fascia aside carefully to be reinstalled later.

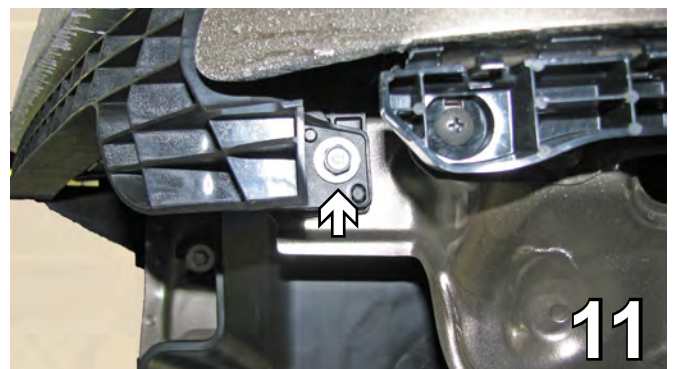
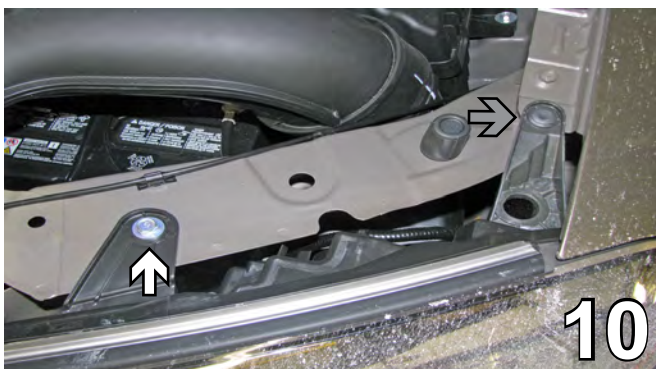
2012 HONDA PILOT: Remove eleven pushpins from the lower edge of the fascia and the belly pan. Pull the fascia forward to remove. Set the pushpins and fascia aside carefully to be reinstalled later.

7. Remove the temperature sensor from the top of the bumper. It will be relocated as the bumper will not be reinstalled.



8. Remove the bolt from the bottom of the metal bumper with the 12MM socket. Do this to both sides of the vehicle.

9. Using the 12MM socket, remove two bolts from the top of the metal bumper. Do this to both sides of the vehicle. Pull the metal bumper forward to remove. The metal bumper will not be reinstalled.



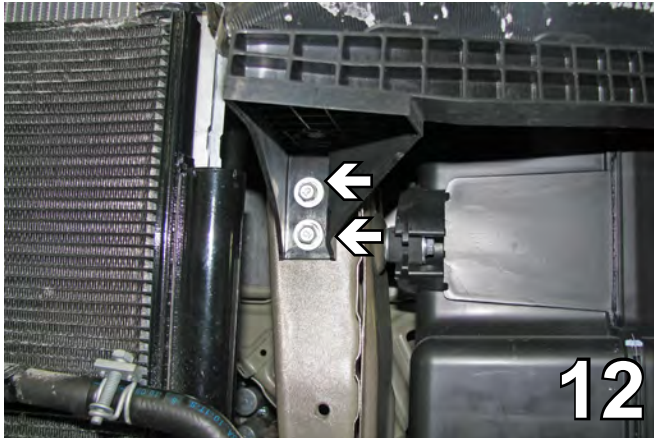
10. Using the 10MM socket, remove one bolt (white arrow) from the top side of the headlight assembly. Also remove the pushpin (gray arrow). Do this to both sides of the vehicle. Set the bolts and push pins aside to be reinstalled later.

11. Using the 10MM socket, remove one bolt from the side of the headlight assembly. Do this to both sides of the vehicle. Set the bolts aside to be reinstalled later.

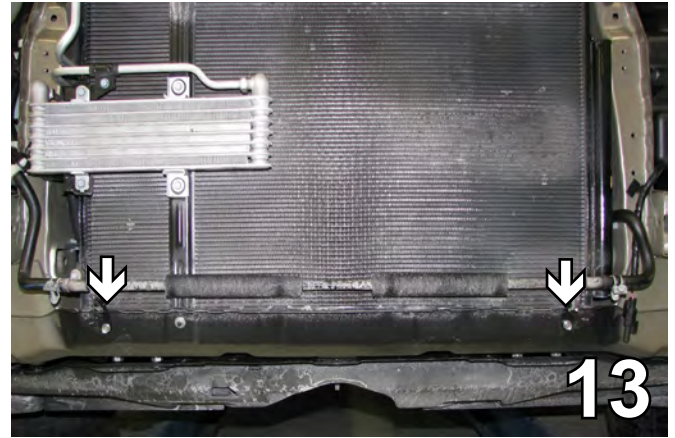
BX2251

2008-10 Honda Odyssey 2009-12 Honda Pilot EXL

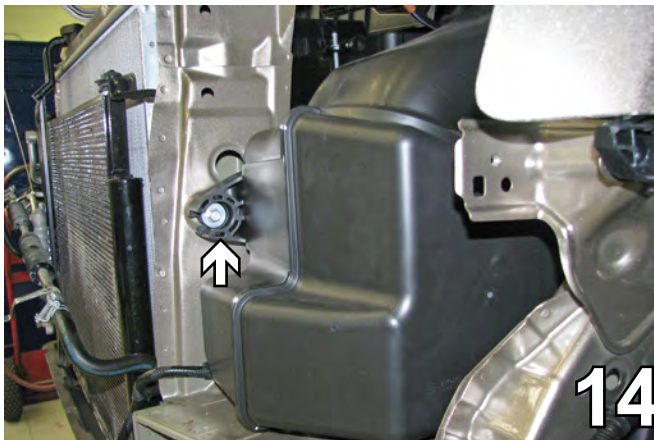
Installation Instructions



12. Using a 10MM socket, remove two bolts from the front of the headlight assembly. Do this to both sides of the vehicle. Unplug and set the headlight assembly and metric bolts aside to be reinstalled later.



13. Using a 10MM socket, remove the two bolts on the bottom of the radiator holding the radiator coolant line. The coolant line will be relocated.



14. On the driver side, using the 10MM socket, remove the bolt from the side of the air baffle. Set the bolt aside to be reinstalled later.



15. On the driver side, using the 10MM socket, remove the bolt from the back of the air baffle. Set the bolt aside to be reinstalled later.

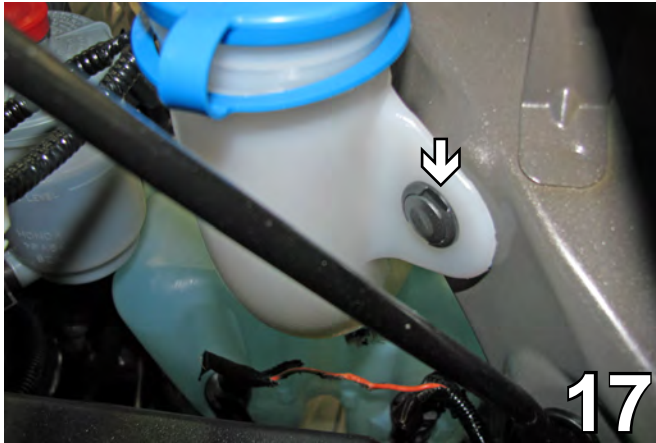


16. On the driver side, using the 10MM socket, remove the bolt from the top of the air baffle. Lift the air baffle up and out. Set it and the bolt aside to be reinstalled later.

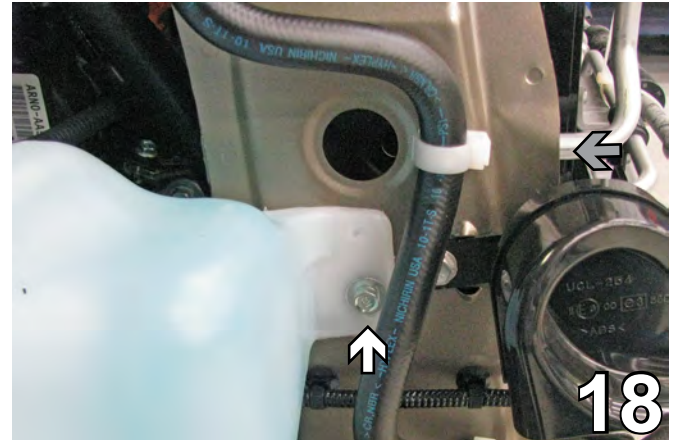
BX2251

2008-10 Honda Odyssey 2009-12 Honda Pilot EXL

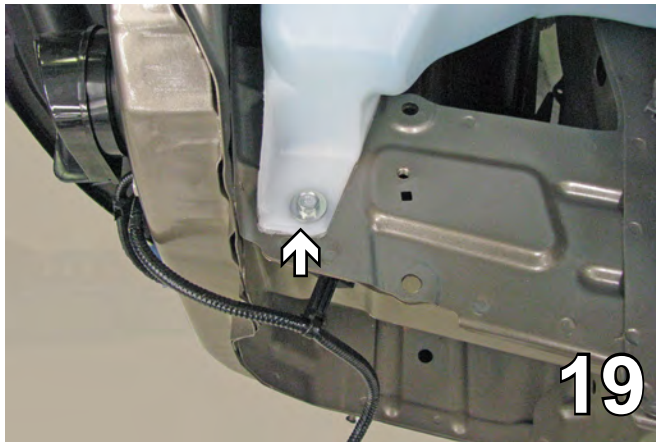
Installation Instructions



17. On the passenger side, remove the push pin by the washer reservoir fill lid. Set aside to be reinstalled later.



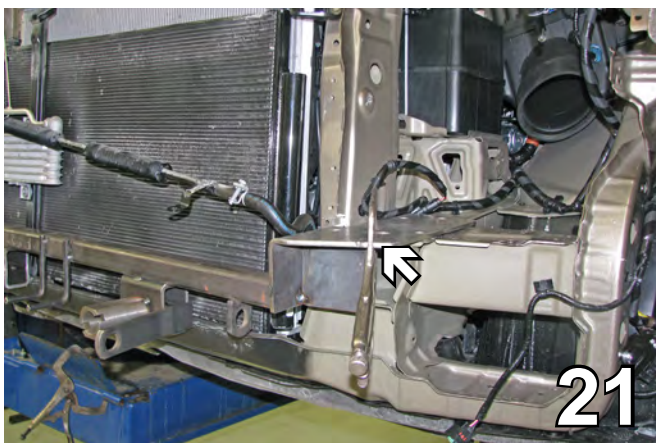
18. Using the 10MM socket, remove one bolt from the side of the washer reservoir. Set the bolt aside to be reinstalled later.



19. Using the 10MM socket, remove one bolt from the bottom of the washer reservoir. Set the bolt aside to be reinstalled later and move the washer reservoir out of the way.



20. Cut on the top edge of the frame front webbing and 1/2" above the frame with the reciprocating saw. Be careful not to cut into coolant lines, radiator or electrical wiring. Bend the webbing toward the headlight area. Do this to both sides of the vehicle. This will open the area for the baseplate installation.

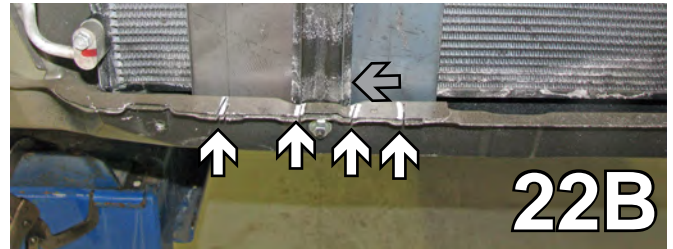
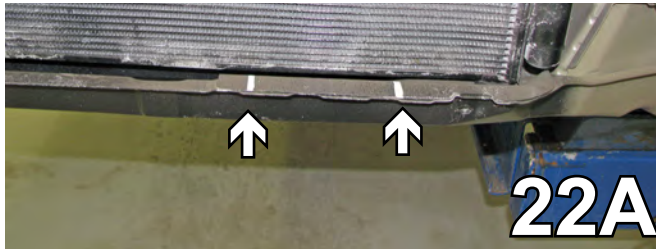


21. Clamp the baseplate on as far back as it will go. It will hit the rib on the bottom of the radiator cross member. Mark the areas affecting the baseplate (see step 22) then remove the baseplate.

BX2251

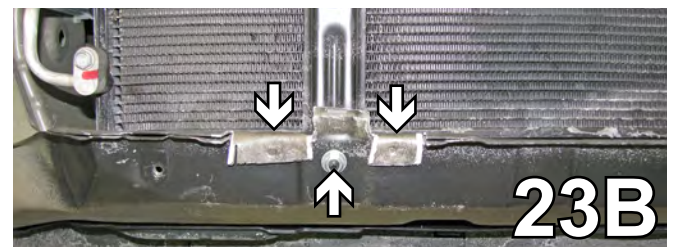
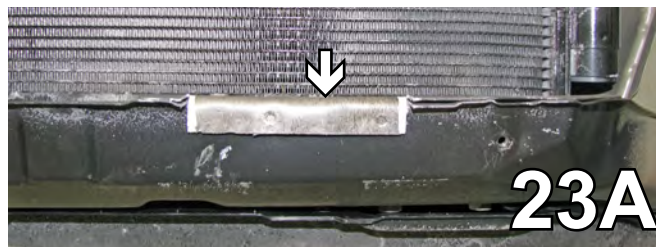
2008-10 Honda Odyssey 2009-12 Honda Pilot EXL

Installation Instructions

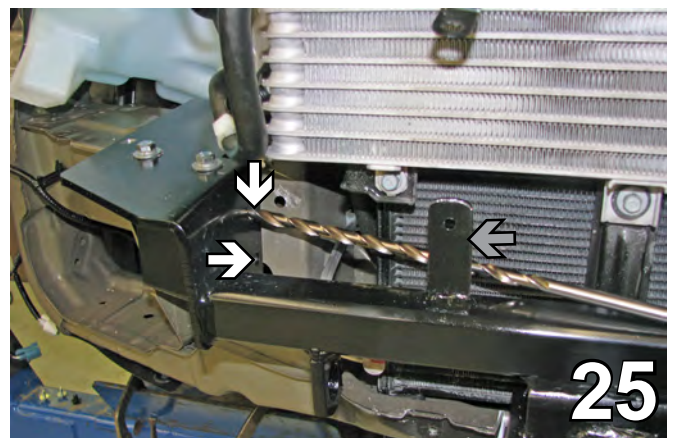
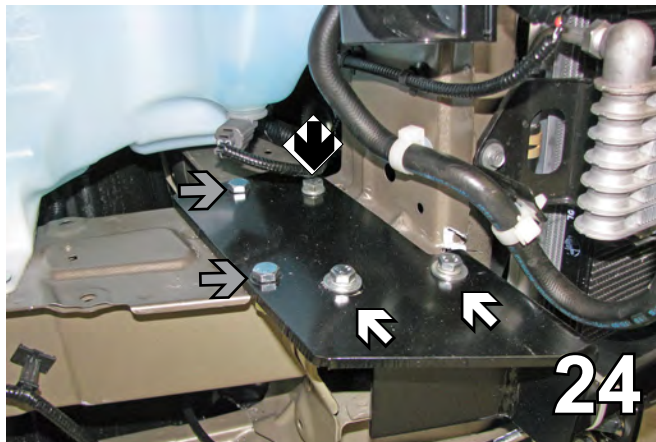


22. Using a reciprocating saw, cut the notches (22A). Be sure to use a backing plate (gray arrow) to prevent cutting the radiator. The passenger side has a ridge, be sure to cut on both sides of it (22B).

When using power drills be aware of the dangers of torque and drill bit length.



23. On the driver side, bend the cut area down (23A). On the passenger side (23B), bend the outside pieces down and the center section up.



24. Slide the baseplate on the top of the frame and align the two front holes (white arrows) of the baseplate with the existing holes in the frame for the bumper. Tighten the 8MM hex bolt, 8MM lock washer, and 3/8" flat washer into the existing holes for the metal bumper, using the 13MM socket. Use Loctite Red on all bolts. Using the baseplate as a template, drill the holes in the top of the baseplate into the frame with the 13/32" drill bit. Insert the 3/8" x 1" hex bolts into the outside two drilled holes (gray arrows) in the top of the frame webbing, tighten the 3/8" lock washers and the hex nuts on the back side of the frame webbing. Insert 3/8" x 1 1/2" bolt and 3/8" lock washer with 3/8" nut plate into the back inside hole (black arrow).

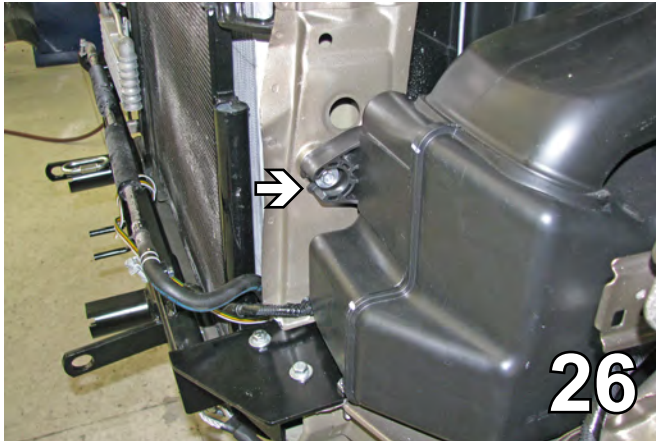
25. Using the baseplate as a template, drill the two holes in the side of the baseplate into the frame with an extra long 13/32" drill bit in order to get behind the extensions (gray arrow). Do this to both sides of the vehicle. Insert the nutplate into the end of the frame to align with the drilled holes, tighten the 3/8" x 1 1/2" hex bolt and lock washer with the 9/16" socket. Do this to both sides of the vehicle. Use Loctite Red on bolts.

BE SURE TO USE LOCTITE® RED ON ALL BOLTS BEFORE TIGHTENING. TIGHTEN ALL BOLTS ACCORDING TO THE TORQUE CHART ON THE FRONT PAGE OF THESE INSTRUCTIONS OR ON PAGE 3 OF THE BASEPLATE TOWING GENERAL INSTRUCTIONS.

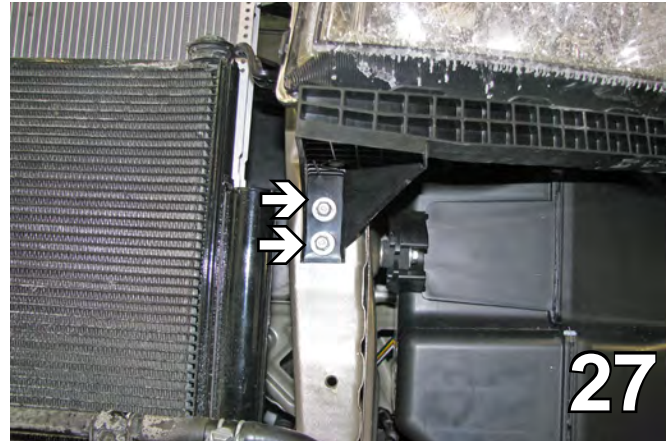
BX2251

2008-10 Honda Odyssey 2009-12 Honda Pilot EXL

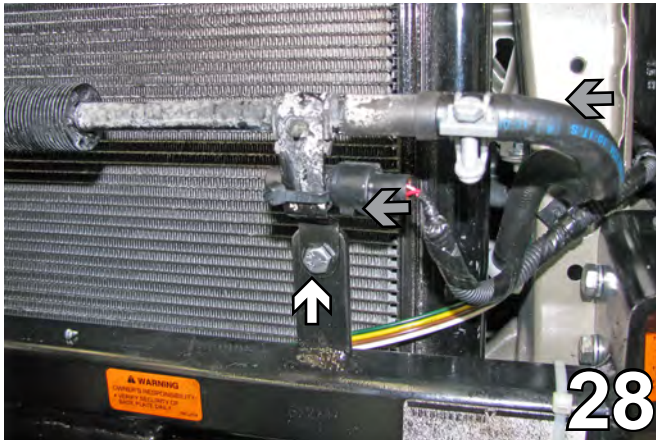
Installation Instructions



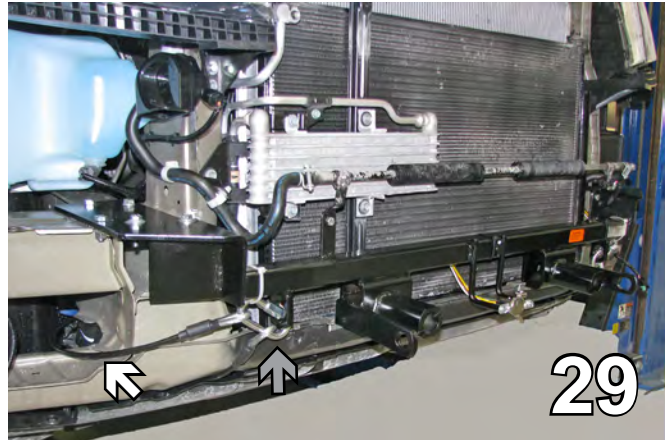
26. Reinstall the air baffle. Snap everything back together. Using a 10MM socket, reinstall the three bolts on the side, back and top.



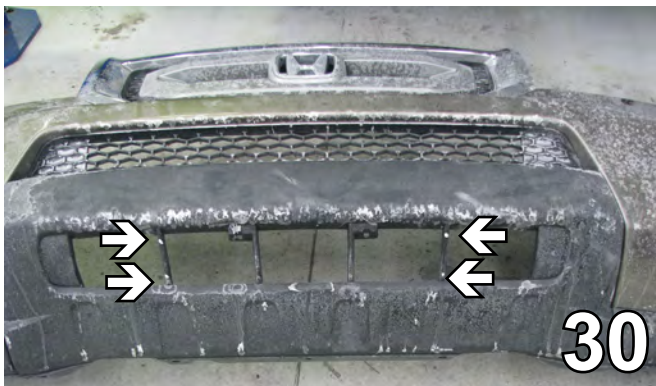
27. Reinstall the headlight assembly. Using a 10MM socket, reinstall the four bolts on the top, side and front. Also reinstall the pushpin on the top.



28. Attach the coolant line to the extensions using 1/4-20 x 3/4" bolts and 1/4-20 whiz nuts (white arrow). Do this on both sides. Attach the temperature sensor to the bracket with a cable tie.



29. Attach the permanent baseplate safety cables to the provided convenience link on the baseplate (see gray arrow). The photo above shows the recommended installation of the cables to frame of vehicle (see white arrow). Additional options may interfere with suggested mounting; in this case secure the cables to a solid piece of the frame as described in the instructions included with the permanent baseplate safety cables. Be sure the safety cables do not rub against any hoses or moving parts. Do this to both sides of the vehicle.



30. Cut out the first vertical style from the end on each side of the front fascia.

31. Reinstall the fascia, bolts and push pins.

Install the tow bar and safety cables according to the instructions included in their packages.

Do not substitute other devices if the tow bar pin and clip are lost.

Be sure that **ALL** electrical connections are plugged in properly and functioning **BEFORE** Installing the fascia.

BX2251

2008-10 Honda Odyssey

2009-12 Honda Pilot EXL

Installation Instructions



Odyssey with removable tabs installed.



Pilot with removable tabs installed.



Pilot without removable tabs installed.

If the baseplate is in an accident, it must be replaced. DO NOT use it again! An accident can cause unseen damage and using it again could result in more damage or serious injury. DO NOT use the baseplate if it is damaged or missing parts.

CUSTOMER SERVICE COMMITMENT

Blue Ox is committed to providing you with exceptional customer care throughout your lifetime with our products. Our team is here to assist you with any questions you may have regarding the performance of your product. Simply call (402) 385-3051 and you can speak with our customer care team.

Additionally, please visit our website to see which rallies our Destination America team will be attending. For a nominal fee, our service technician will service your towing system to ensure it's in proper working condition. Also, as a commitment to our customers, should you visit our factory, you can stay at our full service Blue Ox campground at no charge along with enjoying a factory tour.

Again, thank you for being our customer and for the confidence you have shown in the performance of our products. It is because of customers like you we enjoy the success we have today.



© 2011 Blue Ox
One Mill Road, Industrial Park
Pender, Nebraska 68047
Phone: (402) 385-3051
Fax: (402) 385-3360
www.blueox.com