



# BLUE OX® 2011-12 Kia Sportage LX Installation Instructions

**BX2723**

Serial Number

**Attachment Tab Height: 16.5"**

**Attachment Tab Width: 23"**

**Please read BOTH these Installation Instructions and the General Instructions prior to installing or operating this equipment.**

- Blue Ox® towing products and accessories are intended to be installed by Blue Ox® Dealers who are familiar with our products and have the equipment and knowledge necessary to do "fit work". If needed, Blue Ox® Dealers can be found at [www.blueox.com](http://www.blueox.com) or by contacting our Customer Care Department at (402) 385-3051.
- Many Blue Ox® baseplates are designed to use existing holes and hardware to mount the baseplate to the towed vehicle. Even though bolts are there, do not assume they are adequate for baseplate mounting. Always use the hardware supplied in the hardware kit and existing hardware as specified in the installation instructions.

**Bolt Torque Specifications**  
Torque in Foot-Pounds for Metric Bolts

| Bolt Size | Grade 8.8 | Grade 10.9 |
|-----------|-----------|------------|
| 6MM       | 6         | 8          |
| 8MM       | 16        | 22         |
| 10MM      | 31        | 40         |
| 12MM      | 54        | 70         |
| 14MM      | 89        | 117        |



**Bolt Torque Specifications**  
Torque in Foot-Pounds for Inch Bolts

| Bolt Size | Grade 5 | Grade 8 |
|-----------|---------|---------|
| 1/4"      | 10      | 14      |
| 5/16"     | 19      | 29      |
| 3/8"      | 33      | 47      |
| 7/16"     | 54      | 78      |
| 1/2"      | 78      | 119     |

If the front of your vehicle looks different than this, please contact us at (402)385-3051.

**Reference your vehicle owner's manual for manufacturer's towing specifications.**

**⚠ WARNING**

Failure to read and follow these instructions could result in separation of the towed vehicle from the tow bar, causing property damage, loss of towed vehicle, personal injury or death.



# **BLUE OX®** BX2723 2011-12 Kia Sportage LX Installation Instructions

**Removable Tabs:** Use only with motorhome mount tow bars or the BX8833 or BX88151 adapters. Removable tabs with only one hole will not attach to car mount tow bars or other adapters. The Acclaim may only be used with removable tab baseplates that have 23" or greater spaced tabs. The Adventurer may only be used with baseplates that have 16" – 36" spaced removable tabs. The Ambassador may only be used with 24" spaced removable tabs.

**Instruction Notes:** The fascia, bumper, and temperature sensor are removed and reinstalled for the baseplate installation. Some drilling and trimming is required.

The dimensional variations between otherwise identical vehicles can be considerable. While the baseplate was designed for easy installation, it may be necessary to tailor the baseplate slightly to compensate for vehicle manufacturer's tolerances. These minor adjustments may include filing a hole slightly, bending electrical rods or bending end plates.

The BX8869 Tail Light Wiring Kit is recommended for this vehicle.



## **NOTICE**

- Handling of some cosmetic parts when installing this product may require the use of protective covers, rags, specialty tools, etc. to prevent damage.
- When using power drills be aware of the dangers of torque and drill bit length.
- Be sure that **ALL** electrical connections are plugged in properly and functioning before reinstalling the fascia.
- Do not use the towed vehicle for storing luggage, equipment, etc. This may cause you to exceed the towing capacity of the tow bar, baseplate and its accessories.
- Be sure to use Loctite® Red on all bolts before tightening. Tighten all bolts according to the torque chart provided.



**BLUE OX**®

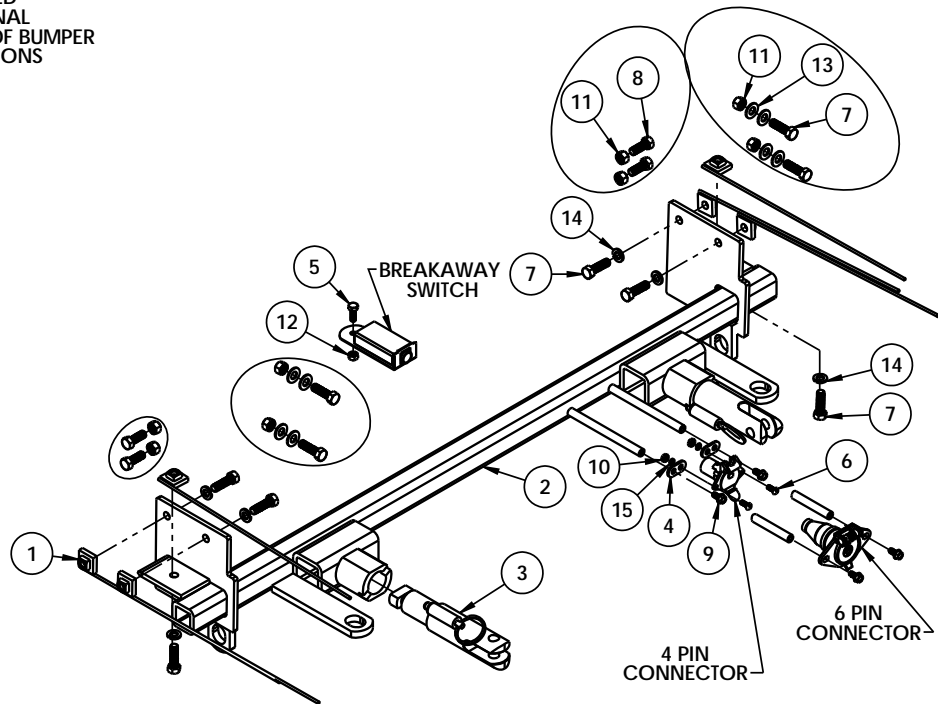
**BX2723**

# 2011-12 Kia Sportage LX Installation Instructions

**NOTE:**  
CIRCLED ITEMS  
ARE TO BE USED  
FOR ADDITIONAL  
SECUREMENT OF BUMPER  
PER INSTRUCTIONS

### Tools Required

- 8MM Socket
- 10MM Socket
- 12MM Socket
- 9/16" Socket
- 9/16" Wrench
- Large Vise Grip
- Phillips Screwdriver
- Flat Screwdriver
- Torque Wrench
- Tape Measure
- Drill
- 13/32" Drill Bit
- Loctite® Red



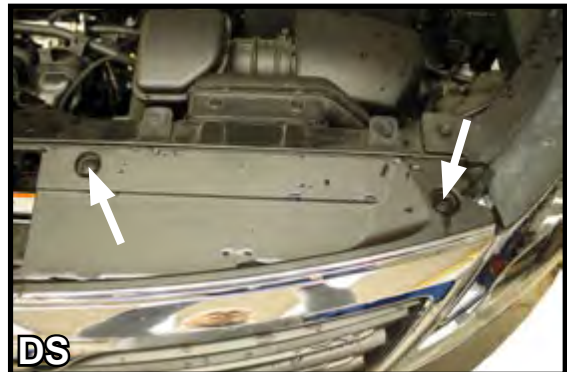
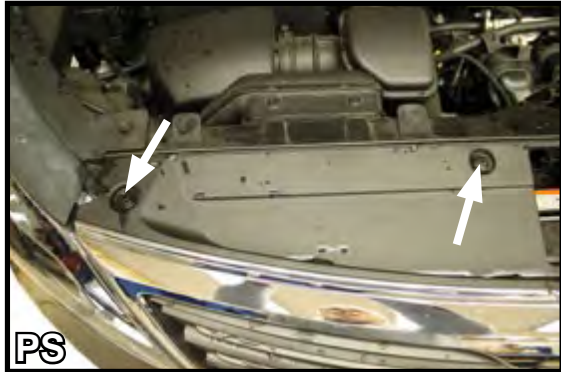
| Item No.                | Part No.       | Description                                      | Qty. |
|-------------------------|----------------|--|------|
| 1.....                  | 61-5208 .....  | Nut Plate Weldment with Wire .....               | 6    |
| 2.....                  | 61-6999 .....  | BX2723 Baseplate .....                           | 1    |
| 3.....                  | 62-3468 .....  | Attachment Tab Assembly .....                    | 2    |
| 4.....                  | 101-5822 ..... | 4 Way Connector Adapter.....                     | 2    |
| 5.....                  | 201-0050 ..... | 1/4"-20 X 3/4" Hex Head Bolt Grade 5, ZP .....   | 1    |
| 6.....                  | 201-0192 ..... | #10-32 x 1/2" Round Slotted Head Screw .....     | 2    |
| 7.....                  | 201-0368 ..... | 3/8"-16 x 1-1/4" Hex Head Bolt, Grade 5, ZP..... | 10   |
| 8.....                  | 201-0443 ..... | 3/8"-16 x 1" Hex Head Bolt, Grade 5, ZP.....     | 4    |
| 9.....                  | 201-0553 ..... | 1/4"-20 x 1/2" Hex Wshd Type F Screw .....       | 2    |
| 10.....                 | 202-0047 ..... | #10-32 Hex Nut.....                              | 2    |
| 11.....                 | 202-0090 ..... | 3/8"-16 Hex Nut with Nylon Insert, ZP .....      | 8    |
| 12.....                 | 202-0102 ..... | 1/4"-20 Hex Nut with Nylon Insert, ZP .....      | 1    |
| 13.....                 | 203-0003 ..... | 3/8" Flat Washer, ZP .....                       | 8    |
| 14.....                 | 203-0010 ..... | 3/8" Lock Washer, ZP.....                        | 6    |
| 15.....                 | 203-0054 ..... | #10 Lock Washer, ZP.....                         | 2    |
| 16 (not shown).....     | 226-0046 ..... | 36" Class III Baseplate Safety Cable .....       | 2    |
| 17 (not shown).....     | 229-0359 ..... | 3/8" Quicklink , ZP.....                         | 2    |
| 18 (not shown).....     | 290-0437 ..... | Black Cap Plug Receiver .....                    | 2    |
| 19 (not provided) ..... | 293-1339 ..... | Breakaway Switch.....                            | 1    |
| 20 (not provided) ..... | 294-0805 ..... | 4 Pin Connector .....                            | 1    |
| 21 (not provided) ..... | 294-0902 ..... | 6 Pin Connector .....                            | 1    |



**BLUE OX**

**BX2723**

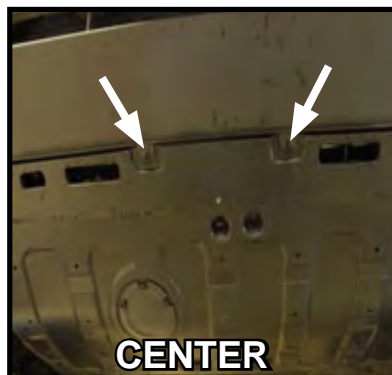
# 2011-12 Kia Sportage LX Installation Instructions



1. With a 10MM socket, remove the bolt from the top portion of the fascia on each side. Remove push pin, one (1) per side.



2. In the wheel well area directly ahead of the front tire towards the bottom is an 8MM bolt that needs to be removed. Further up along the trim there is a push pin that will also need to be removed in order to remove the front fascia.



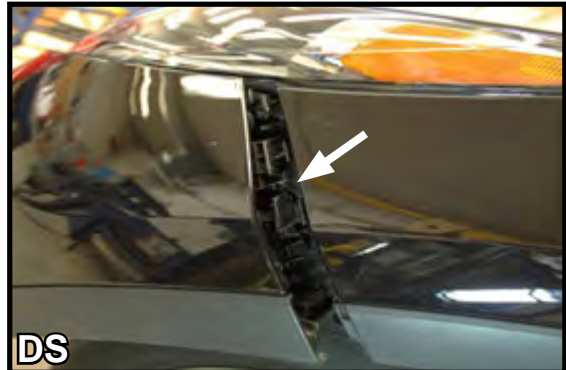
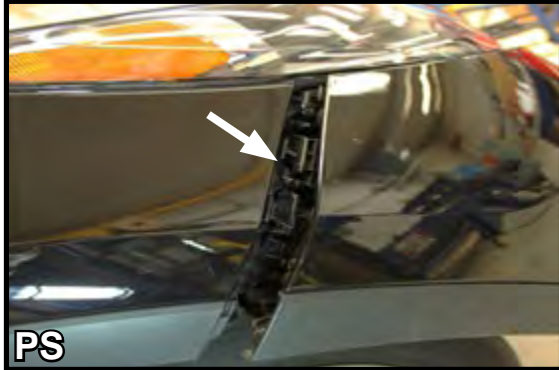
3. Remove the three (3) push pins that are located underneath the vehicle towards the outer edge. There are two (2) push pins located in the center of the vehicle that also need to be removed.



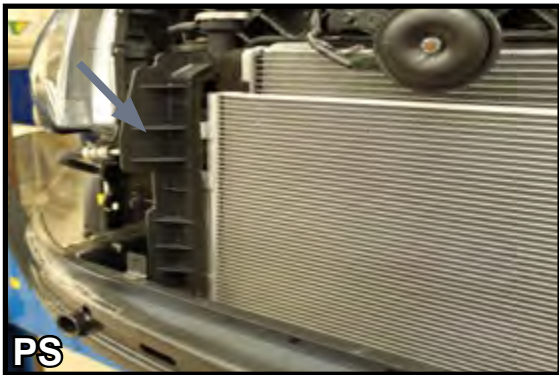
**BLUE OX**

**BX2723**

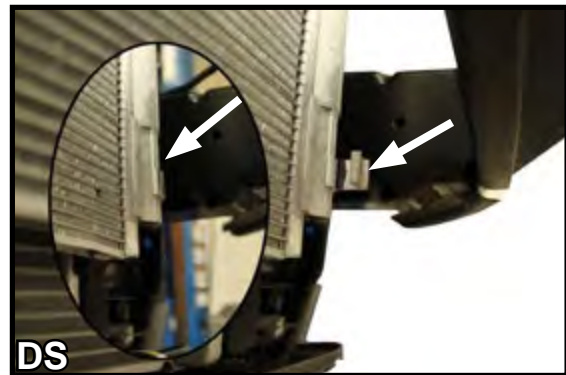
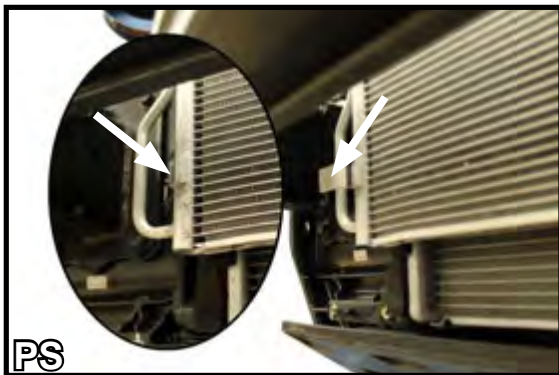
# 2011-12 Kia Sportage LX Installation Instructions



4. Firmly lift up on the sides. If necessary, a flat screwdriver may be used. We recommend you place a cloth over the screwdriver to prevent scratching your vehicle surface.



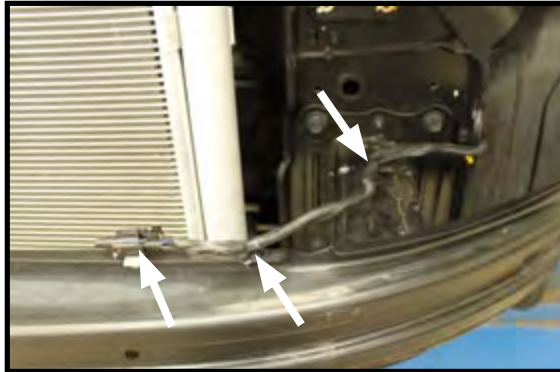
5. Remove the plastic brackets along side the radiator by sliding upward.



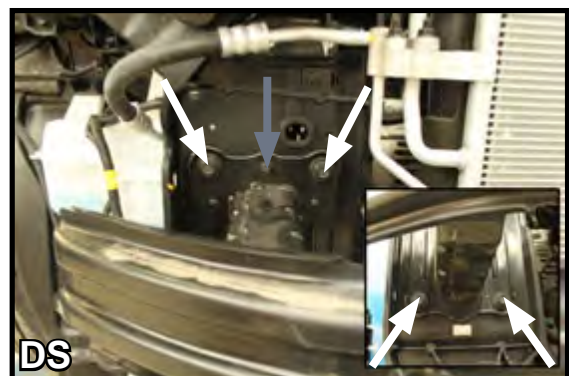
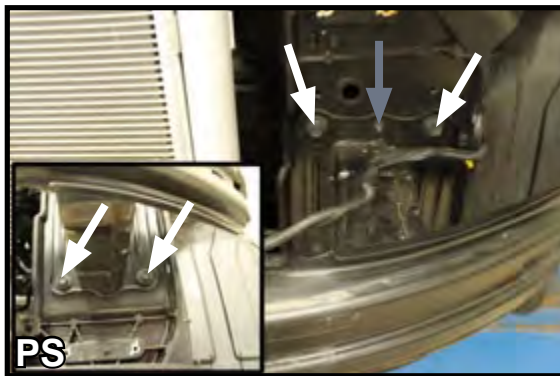
6. After removing the plastic brackets trim the aluminum clips.



# BX2723 BLUE OX® 2011-12 Kia Sportage LX Installation Instructions



7. The temperature sensor will need to be temporarily relocated. Unclip it from the bumper and move off to the side.



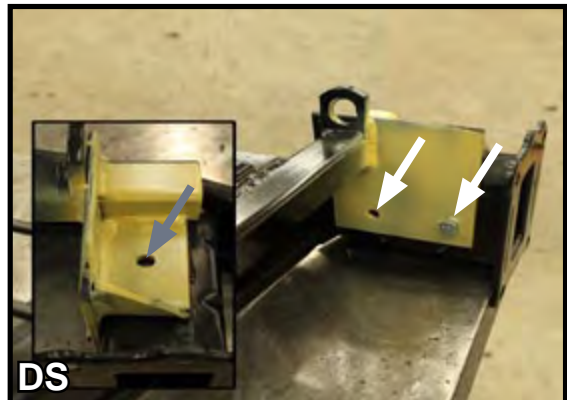
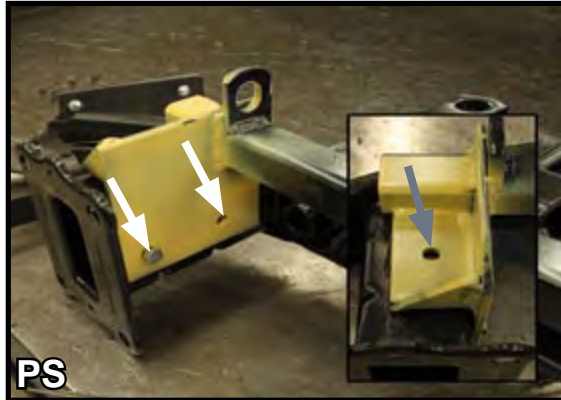
8. To remove the front bumper, use a 12MM socket to remove the four (4) outside bolts on the bumper mount bracket. There are two (2) on the top and two (2) on the bottom. The one (1) center bolt on top requires a 10MM socket.



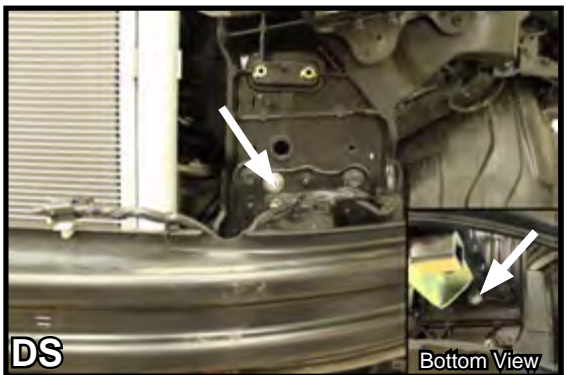
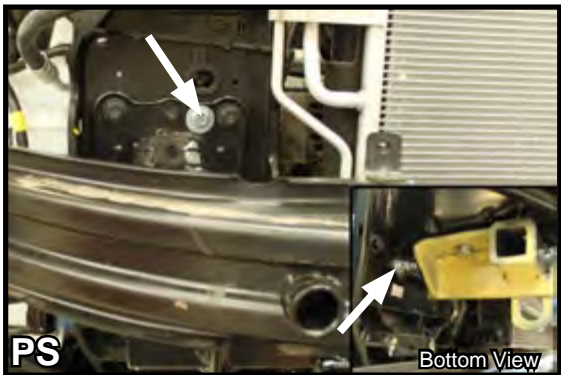
9. Drill two (2) 3/8" holes thru the side plate using the spot welds as a guide. Insert two (2) 3/8"-16 x 1" hex head bolts and 3/8"-16 hex nuts. Do this on both sides on the vehicle.



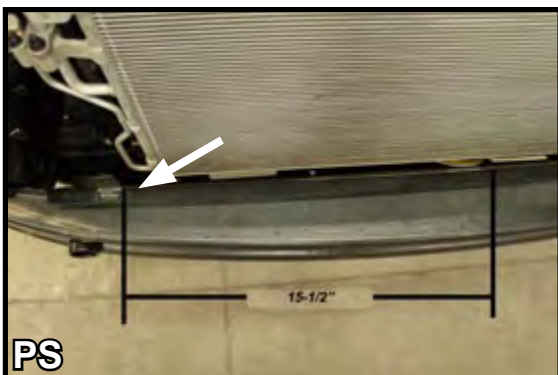
# BX2723 BLUE OX® 2011-12 Kia Sportage LX Installation Instructions



10. With the bumper lying upside down, place the baseplate on top and align the outer most holes. Using a 13/32" drill bit, drill the inner hole and the top hole.



11. For additional support when reinstalling the front bumper you will need to drill two (2) 3/8" holes into the bumper mounting plate. Once the bumper is reinstalled securely, reattach the temperature sensor.



12. To install the breakaway switch measure 15-1/2" from the inside edge of the bracket. Drill a 1/4" hole.



# BLUE OX® 2011-12 Kia Sportage LX Installation Instructions

**BX2723**



13. Attach the permanent baseplate safety cables to the provided convenience link on the baseplate. The photo above shows the recommended installation of the cables. Additional options may interfere with suggested mounting; in this case, secure the cables to a solid piece of the frame as described in the instructions included with the permanent baseplate safety cables. Be sure the safety cables do not rub against any hoses or moving parts. Do this on both sides of the vehicle.
14. Reinstall front fascia.
15. Dealer or installer be certain the user receives the instruction sheet.

## **CUSTOMER SERVICE COMMITMENT**

Blue Ox® is committed to providing you with exceptional customer care throughout your lifetime with our products. Our team is here to assist you with any questions you may have regarding the performance of your product. Simply call (402) 385-3051 and you can speak with our customer care team.

Additionally, please visit our website to see which rallies our Destination America team will be attending. For a nominal fee, our service technician will service your towing system to ensure it's in proper working condition. Also, as a commitment to our customers, should you visit our factory, you can stay at our full service Blue Ox® campground at no charge along with enjoying a factory tour.

Again, thank you for being our customer and for the confidence you have shown in the performance of our products. It is because of customers like you we enjoy the success we have today.



© 2012 Blue Ox  
One Mill Road, Industrial Park  
Pender, Nebraska 68047  
Phone: (402) 385-3051  
Fax: (402) 385-3360  
[www.blueox.com](http://www.blueox.com)