

ROCK JOCK

BY JOHN CURRIE

ROCKJOCK4X4.COM

RockJock® by John Currie presents: TJ/LJ Rear Trac Bars & Trac Bar Bracket Installation Instructions

Fits

Fits: Rear of 1997- 2006 Jeep TJ Wrangler and LJ Unlimited

Adjustable TJ/LJ Rear Trac Bar Components

CE-9120R	TJ/LJ Johnny Joint Rear Trac Bar - for RockJock trac bar brackets & Currie Enterprises aftermarket housings
CE-9120RS	TJ/LJ Johnny Joint Rear Trac Bar - other aftermarket brackets & for stock housings
CE-9121N	TJ/LJ Angled Style Trac Bar Relocator Bracket
CE-9123N	CE-9120R TJ/LJ Johnny Joint Rear Trac Arm Kit (Includes CE-9120R trac bar & CE-9121N bracket kit)

General Description

We have several combinations of TJ/LJ rear trac bar upgrades. This instruction sheet will attempt to explain the components and their function so that you can make sure you have all of the correct components for your application.

Johnny Joint® adjustable rear trac bars are designed to replace the stock rear trac bars on '97-'06 Jeep Wrangler TJ and Unlimited models. The Johnny Joint® trac bar allows you to center the rear axle assembly in the vehicle after the installation of a lift kit and/or when springs settle. Bars are constructed from 1 ¼" heavy wall 4130 chrome moly tubing and feature greasable Johnny Joint® rod ends on both ends.

Trac Bar offerings include:

The **CE-9120R** trac bar is designed to be used with new Currie Enterprises rearend housings or the **CE-9121N** trac bar relocation bracket.

The **CE-9120R** trac bar and the **CE-9121N** trac bar bracket can be purchased together under part number **CE-9123N**.

The **CE-9120RS** trac bar is designed to be used with stock rearend housings or other aftermarket trac bar brackets that are available on the market.

Trac Bar Bracket offerings include:

The **CE-9123N** RockJock bracket with built in angle that tucks the bar up close to the rear axle for optimum gas tank clearance in a TJ. Generally used applications where vehicle has a high pinion angle and applications with high clearance or "belly-up" transfer case skid plates. There are no clearance concerns in LJ applications.

Instructions

- 1) Remove the original trac bar by unbolting it at the housing first and then at the frame. Retain the hardware for reuse. Note: If you have a Currie Enterprises rearend, a trac bar relocation bracket is not needed and you may skip to step 3.
- 2) If you do not have a Currie rearend, and you are installing the **CE-9121N** trac bar relocation bracket, you will install this bracket per it's instructions on the next 3 pages.
- 3) If you are using the RockJock **CE-9121N** trac bar bracket, or you have a Currie rearend, you will now be installing the **CE-9120R** trac bar. If you are using a stock rearend with another type of relocation bracket installed, you will now be installing the **CE-9120RS** trac bar.
- 4) Before installing the trac bar, put anti-seize lube on the 1" threads of the adjustable end. On the non-adjustable end of the trac bar, install the rubber washers over the flanges of the Johnny Joint® ball center on both sides of the Johnny Joint®. Install the non-adjustable end of the trac bar into the frame bracket using the stock bolt. Snug the bolt, but do not tighten.
- 5) Center the rear axle assembly under the Jeep by measuring from the side of the frame rail to a tread line in the center of your tire. Make sure you measure to the same place on both sides! You can center the axle by using a ratchet strap if necessary, or by pushing on the side of the Jeep.
- 6) Adjust the trac bar to fit the centered axle assembly and then install the adjustable end into the housing bracket or relocation bracket. Reinstall the stock bolt through the hole, snug the bolt, but do not tighten.
- 7) Remeasure your rear axle assembly to make sure it's centered. Readjust it if necessary.
- 8) Confirm that the Johnny Joint® rod ends on both ends of the trac bar are straight and in relatively neutral positions. If anything is misaligned, readjust the bar and retighten it before use. Once you are satisfied with your adjustments, go back and tighten and torque all of the bolts:
Mounting bolts at the frame and housing = 50 ft. lbs.
Jam nut = as tight as you can get it! Loose jam nut threads will cause premature failure of the threads in the bar. Check the tightness of this nut periodically.
- 9) Grease the Johnny Joint® rod ends before use with high moly lube grease. If you are not able to find the proper grease locally, it can be purchased on the RockJock website under part number CE-9013G.

NOTE: Check torque specs regularly!

1592 N. JENKS DR., CORONA, CA. 92880
PH (714) 367-1580

ROCK JOCK

BY JOHN CURRIE

ROCKJOCK4X4.COM



ROCK JOCK

BY JOHN CURRIE

ROCKJOCK4X4.COM

RockJock® by John Currie presents: CE-9121N Trac Bar Bracket Installation Instructions

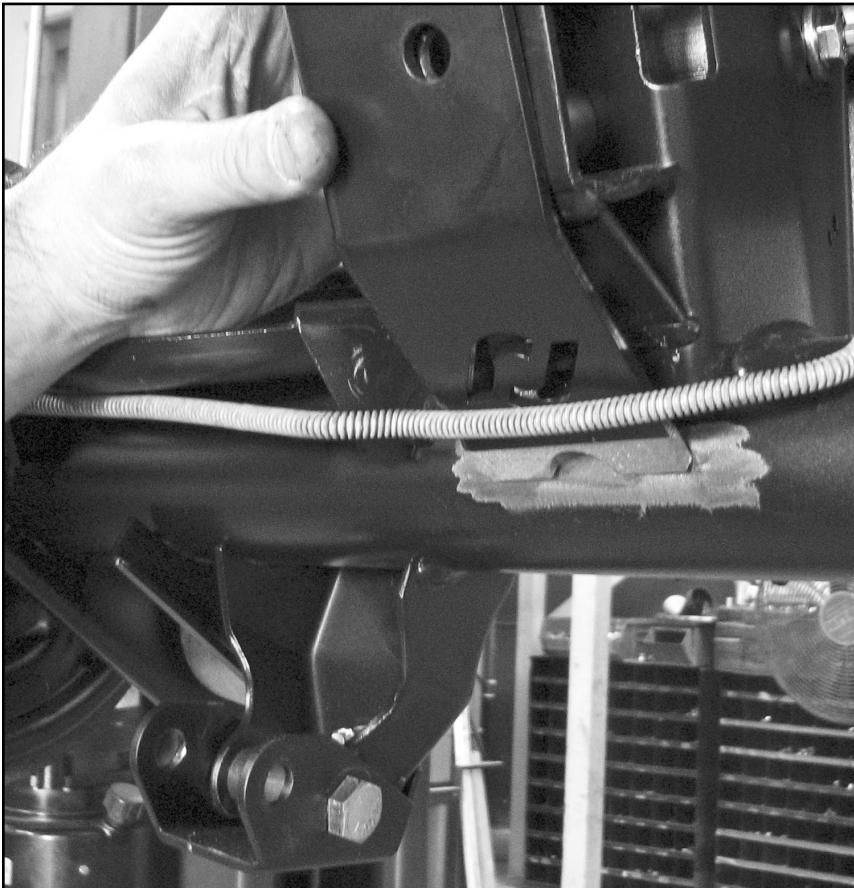
Fits

Fits: Rear of 1997-2006 Jeep TJ Wrangler and LJ Unlimited

Kit Includes

- | | |
|---|-----------------------|
| 1) Trac Bar Relocator Bracket | 2) 1/2" stover nuts |
| 1) 1" o.d. x 1/2" i.d. x 1 5/8" long spacer | 3) 5/16" x 1" bolts |
| 1) 1/2" x 3 1/4" bolt | 6) 5/16" flat washers |
| 2) 1/2" flat washers | 3) 5/16" nylock nuts |

Instructions



- 1) Position the new RockJock trac bar bracket over the top of the stock trac bar bracket and then grind the paint off of your rearend housing's tube in the area that matches the new bracket's weld area.

1592 N. JENKS DR., CORONA, CA. 92880
PH (714) 367-1580

ROCK JOCK

BY JOHN CURRIE

ROCKJOCK4X4.COM



2) Insert the gold tube spacer in place of where the stock trac bar use to fit. Now insert the 1/2" x 3 1/4" bolt through the new bracket, through the original trac bar attaching bolt holes in the stock bracket and through the gold tube spacer. Use a flat washer on the bolt, and one under the stover nut. Torque to 90 ft. lbs.

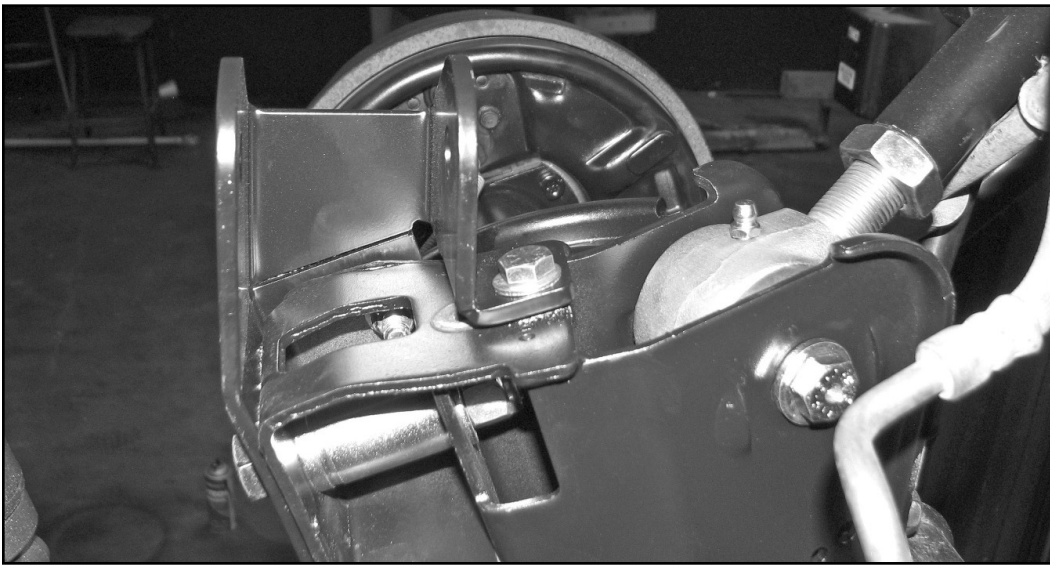
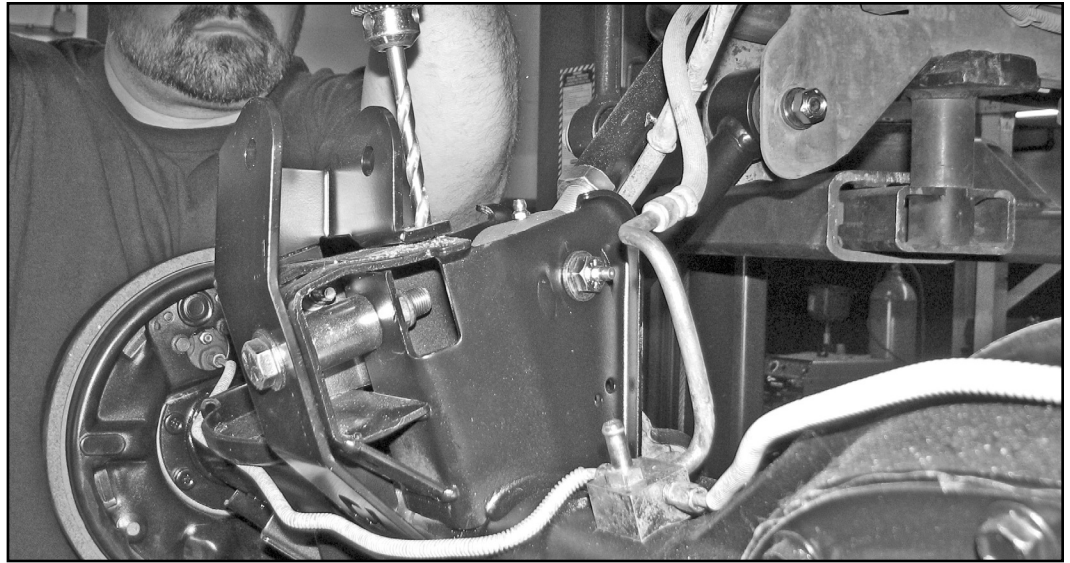


3) Using the new bracket as a template, center punch and then drill the 2 side bolt holes through the stock bracket with a 5/16" drill bit.

4) Insert the two 5/16" x 1" bolts through the new holes with a flat washer on each side. Insert the nylock nuts from the inside and torque to 30 ft. lbs.

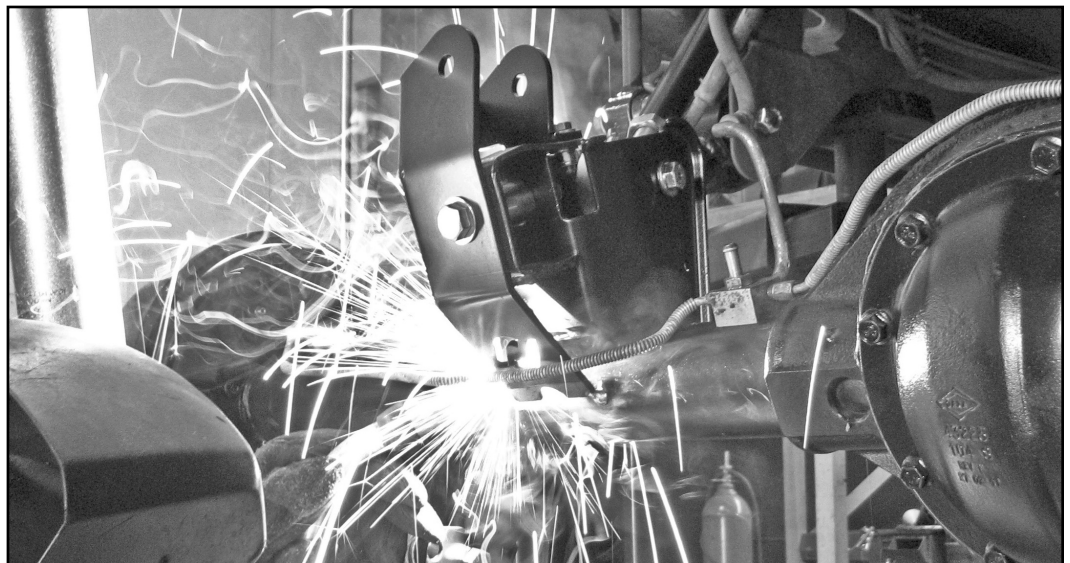


5) Using the new bracket as a template, center punch and then drill the top bolt hole through the stock bracket with a 5/16" drill bit.



6) Insert the 5/16" x 1" bolt through the new hole with a flat washer on each side. Insert the nylock nut from underneath and torque to 30 ft. lbs.

7) Lastly, go back and weld the 2 tabs on the bottom of the bracket to the axle tube. Make sure and cover your brake line to protect it from the welding!



1592 N. JENKS DR., CORONA, CA. 92880
PH (714) 367-1580

BY JOHN CURRIE
ROCK JOCK
ROCKJOCK4X4.COM

