



RockJock® Professional OffRoad Products presents:
CE-9807CA Johnny Joint® Control Arm Set
 Installation Instructions

Please note that modifying the suspension of your Jeep Wrangler will affect the vehicle handling and stability characteristics.

Fits

All Models of '07 & up Jeep JK Wrangler.

Parts List

CE-9807FUA - Front Upper Arms CE-9807RUA - Rear Upper Control Arms
 CE-9807FLA - Front Lower Arms CE-9807RLA - Rear Lower Control Arms

Required Tools

Complete Set of Hand Tools Metric and SAE Drill Floor Jack
 Grease Gun ½" Drill Bit Tape Measure

Installation Instructions

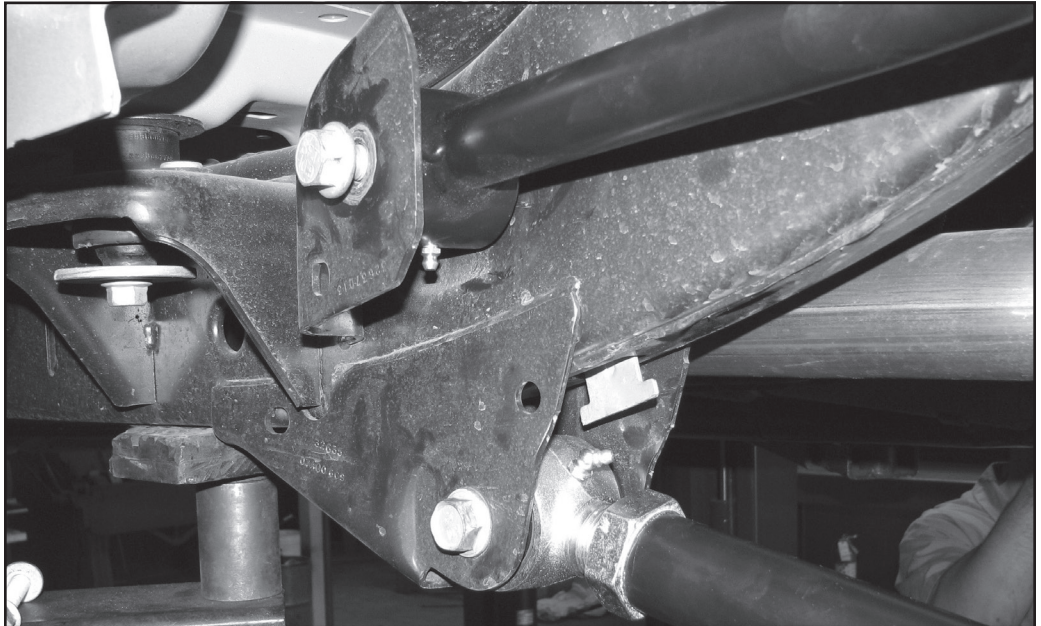
1) Remove the front control arms and replace them with the new arms included in the kit using the factory bolts. **Replace one arm at a time!!!!** It is necessary to cut the passenger side upper control arm bolt at the frame, new ½" bolts are supplied for replacement (it may be necessary to drill out the upper control arm mount with a 1/2" drill bit). The lower arms measure 22 5/8" and the upper arms 18 3/4" center to center. Make sure the grease fittings are on the same side when adjusting the arms. On the top arms the grease fittings point down and on the lower arms the grease fittings point up. On the lower arms the adjustable end goes on the frame. Do not tighten bolts at this time.

2) Remove the rear control arms and replace them with the new arms included in the kit using the factory bolts. **Replace one arm at a time!!!!**

Measure the length of the factory arms and adjust the new arms accordingly. (On a 2 door vehicle the upper arm should be 17 11/16" and the lower arms should be 19 5/8" center to center). Make sure the grease fittings are on the same side. On the top arms the grease fittings point down and on the lower arms the grease fitting points up. On the upper arms the adjustable end goes to the rear end and on the lowers the adjustable end goes to the frame.

Do not tighten bolts at this time.

3) Once the vehicle is set back on the ground with all of the weight on the suspension, tighten all of the hardware on the front and rear control arms to factory specifications.



Currie Enterprises / RockJock Professional Off Road Products
 382 N. Smith Ave., Corona, Ca. 92880
 Ph (714) 528-6957 - F (951) 549-0267
 www.rockjock4x4.com

