



Owner's Manual



Warning: It is the responsibility of the installer to ensure the CargoGlide unit is securely fastened to a base which will provide safe and reliable operation. WE DO NOT RECOMMEND INSTALLATION ON DROP-IN PLASTIC BEDLINERS. The many variations in application and placement of a sliding platform present specific issues to consider for safety and utility. The following recommendations are intended to be general in nature, and provide important safety information for the installer to consider during installation.

Usage

All CargoGlide units are designed for use in stationary and level conditions only. When installed in a vehicle, the CargoGlide unit must be closed and latched securely prior to and during any vehicle movement. The vehicle must be parked in a level position prior to unlocking and extending a CargoGlide unit; otherwise, the weight of your cargo could be difficult or dangerous to move. Control loads by opening and closing slowly. Heavy uncontrolled loads may cause bodily injury or damage your CargoGlide latch or safety stop systems. Regular inspection is recommended.

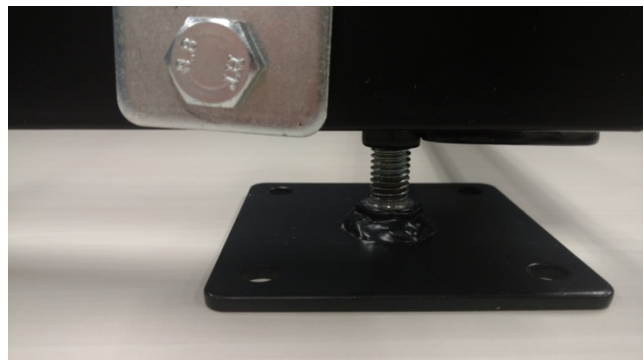
Forces

The CargoGlide unit must be securely fastened to a base floor or other structure to prevent movement. A tipping force is applied to the unit when it is extended, which is countered by the attachments at the front (cab end) and middle of the unit. Furthermore, vehicle acceleration, cornering and braking will result in additional forces affecting your cargo and the CargoGlide unit. Impacts due to dropping a load will result in temporarily higher forces impacting the fasteners and should be avoided.

Spacers

Many vehicle compartments have a lip on the bottom of the bed, or angled tailgates and other obstructions above the floor level. Some CargoGlide models may have to be Spaced Up to clear the obstruction or tailgate angle during extension of the sliding tray. Spacers can be made from many alternatives including wood, metal tubing, plastic sheets etc. The Spacers must be placed under all of the CargoGlide areas that normally contact the floor to provide necessary support. Sold Separately, Optional Spacer Kits are available for most models.

*CargoGlide CG1000, CG1200, and CG1500 models have integral mounts for optional height adjusters for easy adjustment to clear many tailgate angles or other clearance issues. Simply turn the adjustment plate to reach the appropriate height. If this feature is used, add spacers to mid cross member before tightening down bolts, so the bottom frame sides remain straight. *HEIGHT ADJUSTERS ARE ONLY AVAILABLE UPON REQUEST WHEN ORDERING. Not for use with aluminum bed vehicles, use full width spacer bars only.



Frame Separation

CargoGlide frames can be separated to make installation and removal easier.

CG1000, CG1200, CG1500, CG1800HD, CG2200HD models: Slide the top out at least 24". Lift up the deck approximately 18" to 24" and move the end you are holding to your right until the roller bearing and latch pin clear the track (the distance you move to the right varies based on frame length, but it is usually less than 24"). Once the bearing clears the track, lift the top frame so the bearing comes up and out above the track, then slightly to the left until the right side bearing clears the track as well. Once both bearings are clear of the track you can carry the top frame out away from the bottom frame.

Reinstall in the reverse. Starting with the handle end of the deck angled to the right, insert the right side bearing first, then lower the left side bearing into place and straighten the top frame so the top and bottom are aligned. Set it down on the rollers of the bottom frame so it will slide normally.

CG3000XL, CG3000HD, CG2200XL, CG1500XL, CG1000XL and DuraGlide/DualGlide models have hinged stopper flaps on the top and middle frames. To separate frames, simply open the CargoGlide all the way until it stops, then close it a few inches so you can lift the hinged stopper flaps. While holding stoppers flaps up and being careful not to pinch fingers between the stop flaps and the cross bar, hold the latch handle open and slowly slide the tray out until the stopper flaps pass the stop cross bar. Then continue to slide frames apart while holding the frame securely. (Caution: the tray and frames are heavy and will drop abruptly as the last bearing clears the track if not held securely. Two or more people are recommended to carry the frame while it is being removed).

Reinstallation is as easy as simply sliding the frames back into place since the hinged stoppers automatically engage as it passes the stopping points. Make sure the stops have swung into the fully down position, so the CargoGlide frames will not separate unless you manually lift the hinged stoppers.

SETTING UP FOR INSTALLATION

Two bags of hardware are included in the installation kit (three with XL Models):

Bag 1 Contains:

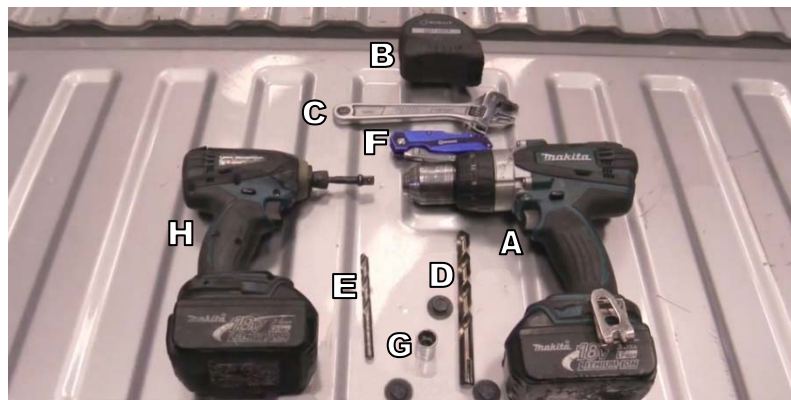
- Tie-down eye bolts
- Washers
- Nuts

Bag 2 Contains:

- Bolts (in separate bag for XL models)
- Nuts
- Washers
- Plus Nuts
- Plus Nut Installation Tool

Tools you will need:

- A. Drill
- B. Tape Measure
- C. Crescent Wrench
- D. 1/2" Drill Bit
- E. 5/16" Drill Bit
- F. Knife
- G. 1/2" Socket
- H. Ratchet or Impact Driver



INSTALLATION INSTRUCTIONS

In-depth videos can be found at <http://www.cargoglide.com/support/cargoglide-technical-support/>

NOTE: Our Standard Plus Nut Installation Kit is now applicable for both steel and aluminum vehicle beds. There may be installation situations where an obstruction below the vehicle bed surface prevents using a Plus Nut, requiring the use of long bolts and/or other fasteners that are not included.

Position & Check Clearances

1. Set the CargoGlide unit into the position in which it will be installed.
 - It is recommended to first cut the flaps of the box top off and lay it in the vehicle bed to prevent scratches to the bed when positioning the CargoGlide frame. Be sure to remove the box after positioning the frame.



2. Center the CargoGlide unit between the wheel wells in the bed of the truck or van. Set the CargoGlide forward toward the cab of the truck. Leave approximately 1" of space between the front wall (cab) of the truck bed and the CargoGlide.

3. Check to ensure nothing interferes with the location and operation of the CargoGlide, including clearance of the tailgate and/or doorway edges.
 - Loads placed in the CargoGlide may cause deflection reducing tailgate clearance. It is necessary that you ensure at least 1" to 2" between the lowest part of the CargoGlide and the highest point on the tailgate.
 - Optional spacer kits or drop link kits can be purchased to provide the additional clearance if needed.



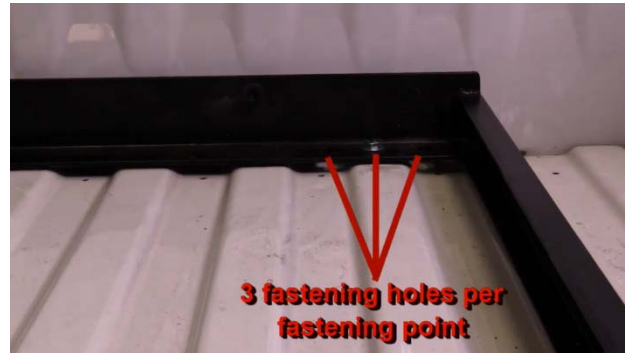
WARNING

PRIOR TO DRILLING HOLES FOR PLUS-NUT INSTALLATIONS, CONFIRM THAT THERE ARE NO **FUEL LINES** WIRES, OR OTHER OBSTRUCTIONS THAT MAY BE DAMAGED UNDER THE VEHICLE WHERE YOU WILL BE DRILLING HOLES.

Drilling Holes

Plus-Nut fasteners are provided for easy installation from the top side of most vehicle beds, so you don't have to crawl under your vehicle to bolt in your CargoGlide.

1. A Slot, or three fastening holes are placed at each fastening point. For most vehicles these holes ensure Plus-Nuts can be installed on the top of the bed ribs.
 - It is not recommended to install Plus-Nuts in the rib valleys. If this can't be avoided, spacers will be needed to fill the gap.
 - Only one of the three mounting holes is needed per fastening location.



2. Select a fastening hole nearest the center on the top of a bed rib. Holes must be placed at least 1/4" from any edges of the top flat rib surface.

3. Mark and/or drill pilot holes.
 - A 5/16" installation bolt can be placed in a pilot hole to temporarily secure the unit in place while you drill other holes.
4. A single direction CargoGlide unit must have at least 4 rear points fastened (2 cab end and 2 middle points).
 - The middle points can be accessed by sliding the top frame open.
 - Extended long bed units will have a second cross member bar where two more fasteners will be needed.
 - Note: A dual direction CargoGlide must have fasteners at both ends and in the middle.



Breakaway of Longbed Frame



5. Drill a pilot hole, then a 1/2" hole in each of your marked locations to accept the Plus-Nut anchor.
6. Move the CargoGlide frame a few inches out of your way allowing you to insert a Plus-Nut anchor into each hole you drilled.



Install Plus-Nuts



Plus-Nut Install Tool

1. The Plus-Nut assembly is comprised of the following components in order:

- 5/16" x 2 1/2" bolt
- Washer
- Plus-Nut compression tool (with serrations facing the Plus-Nut) (←image on left)
- Plus-Nut (threaded onto the bolt)

One should be pre-assembled and ready to install in the installation kit.

2. Using a wrench to hold the Plus-Nut compression tool in place, use another wrench or socket to tighten the bolt into the Plus-Nut. As you tighten the bolt you will feel strong resistance, then light resistance, then strong resistance again as it collapses the Plus-Nut anchor under the vehicle bed. **DO NOT OVERTIGHTEN.**
3. After the Plus-Nut has been fully compressed, remove the bolt and repeat on the other Plus-Nuts you are installing.



Example of Plus-Nut being compressed

Fasten Unit

1. Move the frame back in to place over the Plus-Nuts. Install the 5/16" bolts from your installation kit. Put the bolt through a washer then through the mounting hole in the CargoGlide frame and into the Plus-Nut and tighten securely in each of your mounting locations. Inspect periodically to ensure bolts remain securely fastened.



Note: Plus-Nuts must be installed on flat surfaces. Do not install Plus-Nuts on any slope of the truck bed ribs.

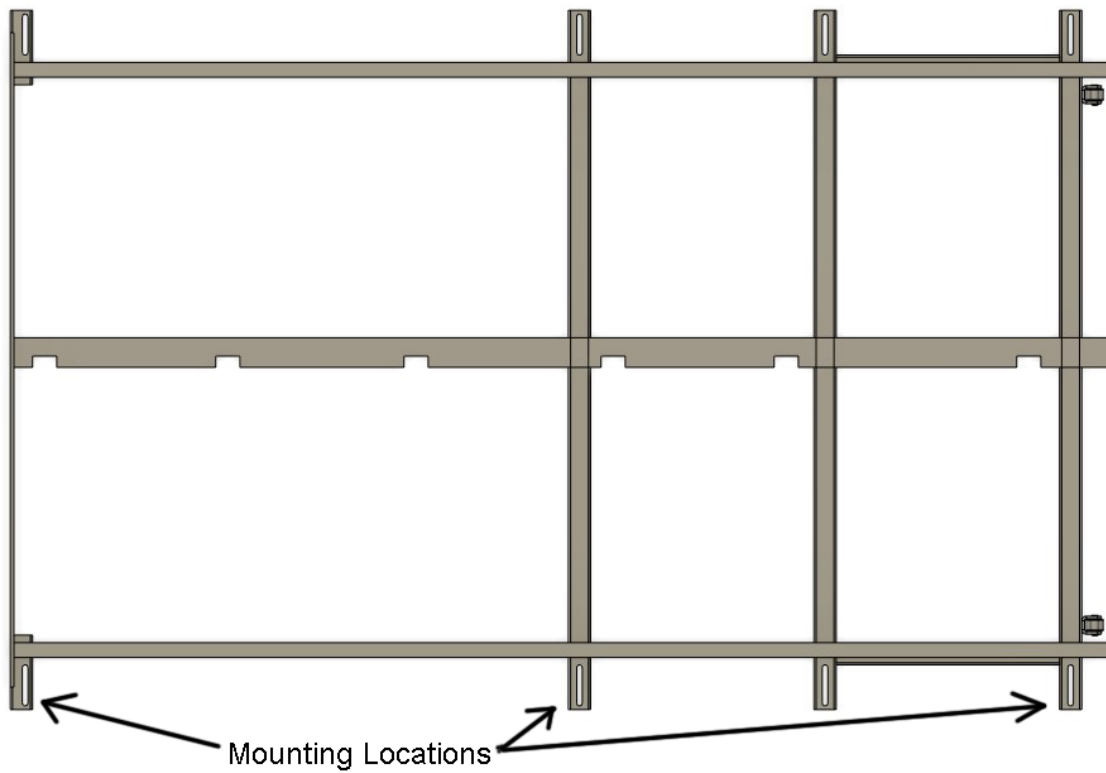
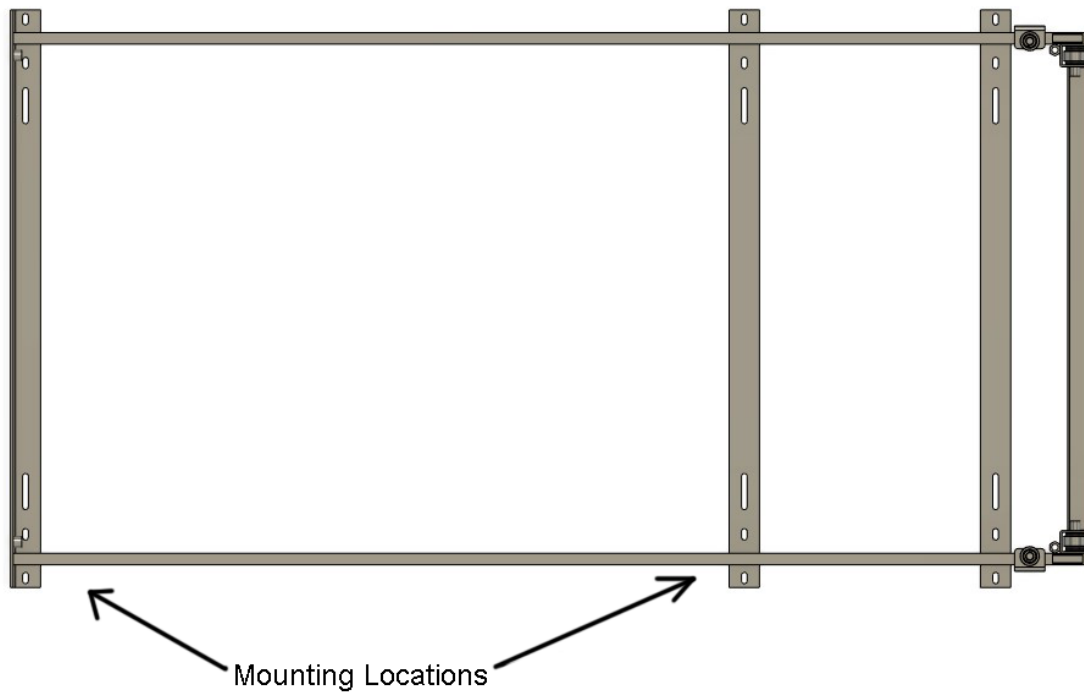
If the Plus-Nut is at an angle, making it difficult to thread the bolt in, you may be able to thread a bolt a few turns into the Plus-Nut from underneath the vehicle and use pliers to hold it straight enough for someone inside the vehicle bed to thread their bolt a few turns through the frame from above, Then remove the temporary bolt below before you finish tightening, once the upper one starts to thread.



SAFETY CHECK!

PRIOR TO PLACING ANY CARGO ON THE UNIT, CHECK TO MAKE SURE UNIT IS WORKING PROPERLY.

- Make sure the stopper flaps are in the down position and engaged when extended.
 - Failure to do this can result in the top or middle frame sliding off the frame below it causing injury or damage.
- Carefully Slide out unit, releasing latch handle to make sure it stops at each stop position and that there is safe clearance for fingers, tailgates, etc.



Thank you for buying a CargoGlide product.

Please let us know if you have any questions while doing your installation.

We really like to see pictures of our CargoGlide products in use. Please send pictures via email to us at sales@cargoglide.com so we can add them to our gallery of customer shots.

All the best from the CargoGlide crew!

www.cargoglide.com support@cargoglide.com

877-525-9535