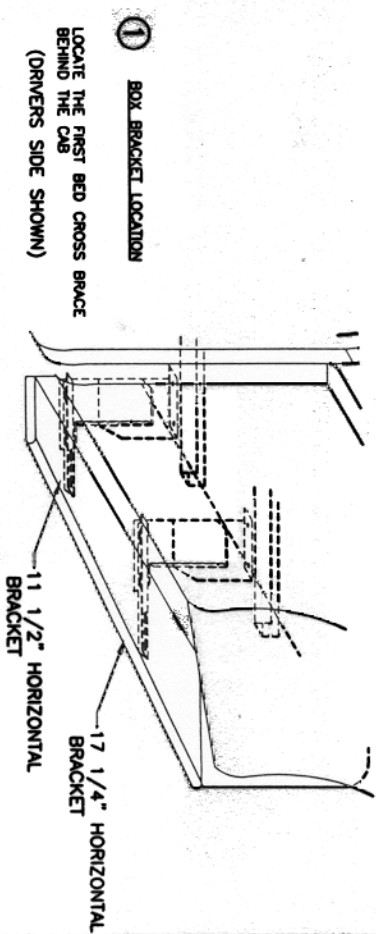


DRILLING INTO BODY AND FRAME IS REQUIRED.

QTY.	DESCRIPTION	QTY.	DESCRIPTION
1	DUALY BOARD 1 DRIVER & 1 PASSENGER	2	5/16" CLIP NUT
1	STONE GUARD 1 LEFT & 1 RIGHT	20	5/16" x 3/4" BOLT
1	3/8" x 1" SELF TAPPING SCREW	18	5/16-18 HEX WASHER HEAD NUT
8	#14x3/4" SHEET METAL SCREW	4	FLAT BRACKET, FL74
6	#14x5/8" SQUARE HEAD SCREW	4	FLAT BRACKET, FL75 D&P
8	1/4-20 HEX NUT	2	HORIZONTAL BRACKET, 11 1/2" 3124F
1	END CAP 1 LEFT & 1 RIGHT	2	HORIZONTAL BRACKET, 17 1/4" 3124G
		10	#14 x 3/4 TEK SCREW

TOOLS REQUIRED: 5/16" DRILL • 1/2" HEX SOCKET • 1/2" WRENCH • 5/16" NUT DRIVER • 3/8" NUT DRIVER



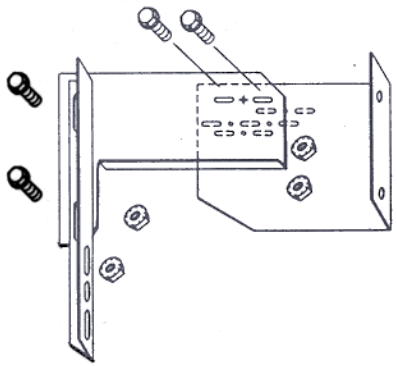
1 BOX BRACKET LOCATION

LOCATE THE FIRST BED CROSS BRACE BEHIND THE CAB (DRIVERS SIDE SHOWN)

11 1/2" HORIZONTAL BRACKET
17 1/4" HORIZONTAL BRACKET

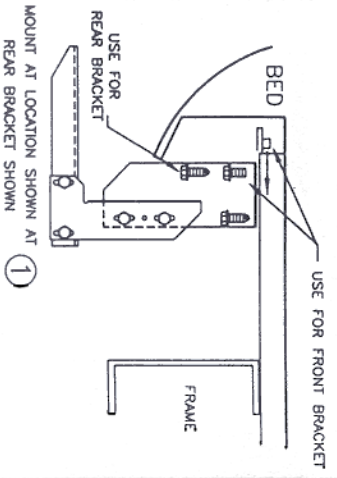
2

BRACKET ASSEMBLY ASSEMBLE WITH 5/16" BOLTS MOUNT THE ANGLE STRAP TO THE REAR BRACKET ONLY



3

FRONT BRACKET MOUNTING PREDRILL A 5/16" HOLE NEAR THE END OF THE FRONT CROSSBRACE. SLIDE NUT CLIP INTO END OF CROSS BRACE AT BRACKET LOCATION BRACKET ASSEMBLY MOUNT TO BED ASSEMBLY WITH 5/16" BOLTS, NUT CLIP AND #14 SELF DRILLING SCREW REAR BRACKET MOUNTING MOUNT LIKE THE FRONT BRACKET, BUT USE 2 #14 SCREWS TO MOUNT TO THE BED.



4

BEND STONE GUARD BY HAND AND KNEE TO FIT THE WHEEL WELL BEFORE INSTALLING TO RUNNING BOARD

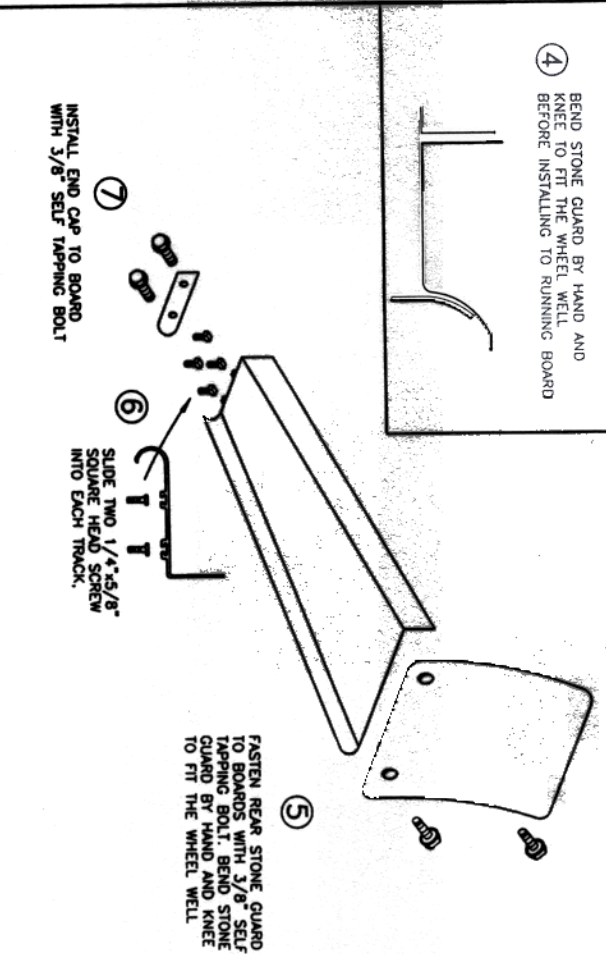


7

INSTALL END CAP TO BOARD WITH 3/8" SELF TAPPING BOLT

6

SLIDE TWO 1/4" x 5/8" SQUARE HEAD SCREW INTO EACH TRACK.



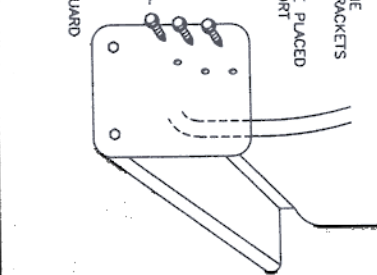
8

HOLD BOARD IN PLACE WITH THE BOARD RESTING ON THE BOX BRACKETS. NOTE: BE SURE THAT 1/4" BOLTS ARE PLACED INTO THE BRACKET STEP SUPPORT

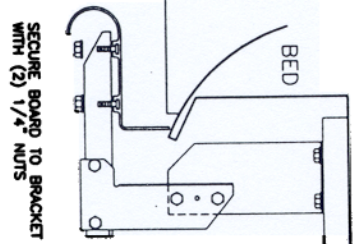
9

SCREW THROUGH STONE GUARD INTO INNER STEEL FENDER LIP USING #14 BY 3/4 SHEET METAL SCREWS. MAKE SURE YOU DRILL INTO METAL. DO NOT DRILL INTO THE PLASTIC DUALY FENDERS

3 PLACES AT EACH STONE GUARD



10



11

WITH BOARD LEVEL TIGHTEN ALL LOOSE BOLTS

12

REPEAT FOR OTHER SIDE