

DRILLING INTO BODY AND FRAME IS REQUIRED.

INSTALLATION PARTS LIST:

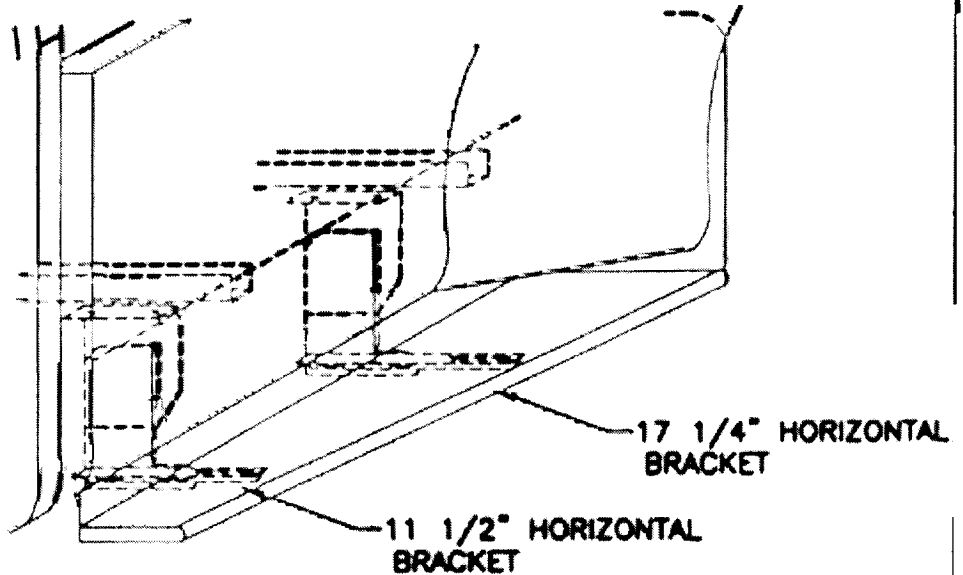
QTY.	DESCRIPTION
1	DUALY BOARD 1 DRIVER & 1 PASSENGER
1	STONE GUARD 1 LEFT & 1 RIGHT
8	3/8"x1 SELF TAPPING SCREW
6	#14x3/4" SHEET METAL SCREW
8	1/4x5/8" SQUARE HEAD SCREW
8	1/4-20 HEX NUT
1	END CAP 1 LEFT & 1 RIGHT

QTY.	DESCRIPTION
2	5/16" CLIP NUT
20	5/16"x 3/4" BOLT
18	5/16-18 HEX WASHER HEAD NUT
4	FLAT BRACKET, FL74
4	FLAT BRACKET, FL73 D&P
2	HORIZONTAL BRACKET, 11 1/2", 3124F
2	HORIZONTAL BRACKET, 17 1/4", 3124G
10	#14 X 3/4 TEX SCREW

TOOLS REQUIRED: 5/16" DRILL • 1/2" HEX SOCKET • 1/2" WRENCH • 5/16" NUT DRIVER • 3/8" NUT DRIVER

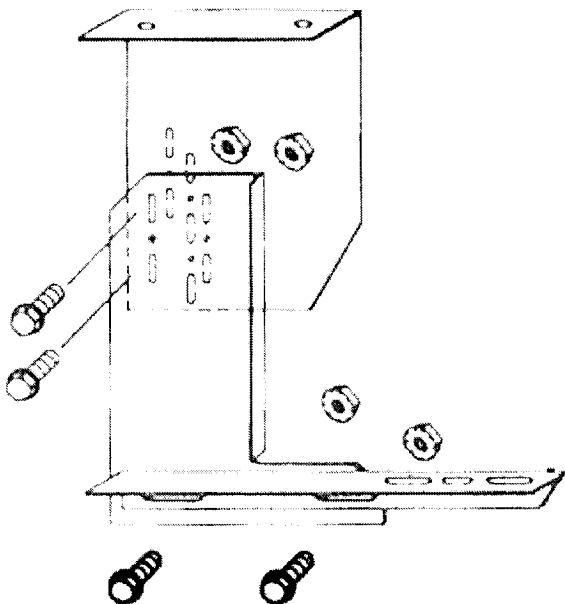
1 BOX BRACKET LOCATION

LOCATE THE FIRST BED CROSS BRACE BEHIND THE CAB
(DRIVERS SIDE SHOWN)



2

BRACKET ASSEMBLY
ASSEMBLE WITH 5/16" BOLTS
MOUNT THE ANGLE STRAP TO THE
REAR BRACKET ONLY



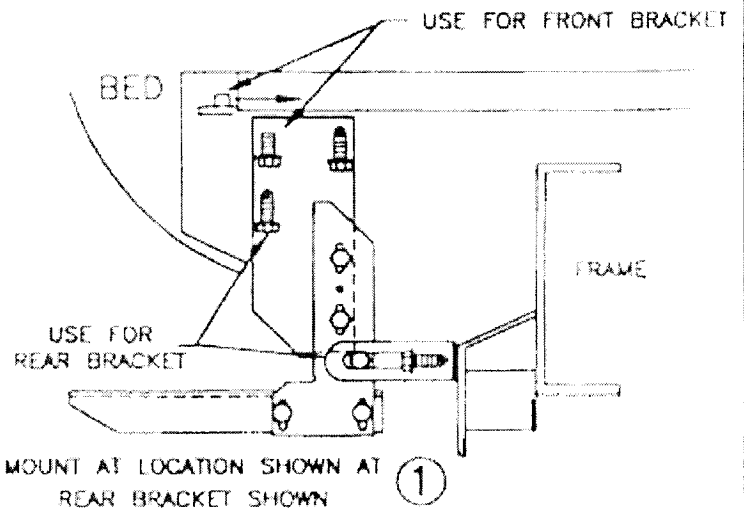
3

FRONT BRACKET MOUNTING

PREDRILL A 5/16" HOLE NEAR THE END OF THE FRONT CROSSBRACE, SLIDE NUT CLIP INTO END OF CROSS BRACE AT BRACKET LOCATION
BRACKET ASSEMBLY MOUNT TO BED, ASSEMBLE WITH 5/16" BOLTS, NUT CLIP AND #14 SELF DRILLING SCREW

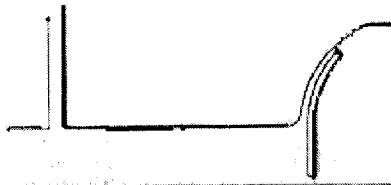
REAR BRACKET MOUNTING

MOUNT LIKE THE FRONT BRACKET, BUT USE 2 #14 SCREWS TO MOUNT TO THE BED AND MOUNT THE ANGLE STRAP TO THE SPRING MOUNT WITH 2 #14 SCREWS



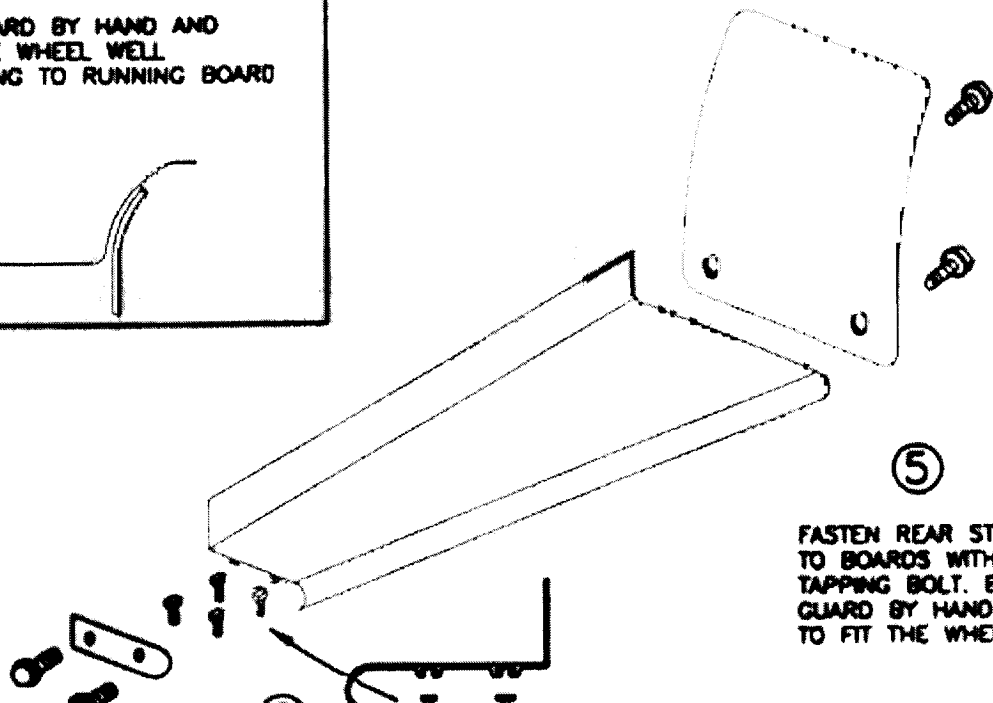
④

BEND STONE GUARD BY HAND AND KNEE TO FIT THE WHEEL WELL BEFORE INSTALLING TO RUNNING BOARD



⑤

FASTEN REAR STONE GUARD TO BOARDS WITH 3/8" SELF TAPPING BOLT. BEND STONE GUARD BY HAND AND KNEE TO FIT THE WHEEL WELL



⑦

INSTALL END CAP TO BOARD WITH 3/8" SELF TAPPING BOLT

⑥

SLIDE TWO 1/4"x5/8" SQUARE HEAD SCREW INTO EACH TRACK

⑧

HOLD BOARD IN PLACE, WITH THE BOARD RESTING ON THE BOX BRACKETS

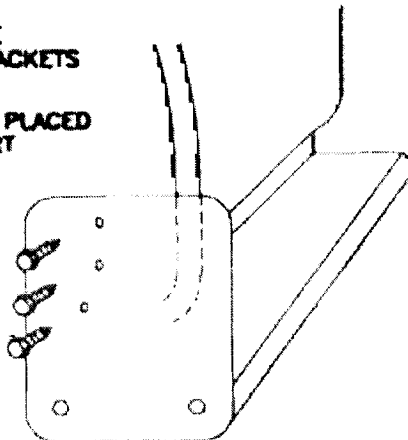
NOTE:

BE SURE THAT 1/4" BOLTS ARE PLACED INTO THE BRACKET STEP SUPPORT

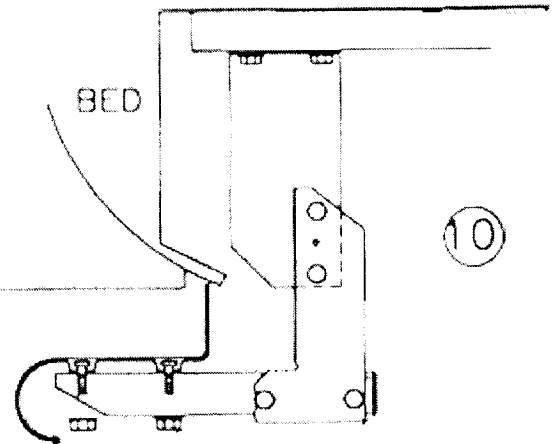
⑨

SCREW THROUGH STONE GUARD INTO INNER STEEL FENDER LIP USING #14 BY 3/4 SHEET METAL SCREWS. MAKE SURE YOU DRILL INTO METAL DO NOT DRILL INTO THE PLASTIC DUALY FENDERS

3 PLACES AT EACH STONE GUARD



⑩



SECURE BOARD TO BRACKET WITH (2) 1/4" NUTS

⑪

WITH BOARD LEVEL TIGHTEN ALL LOOSE BOLTS

⑫

REPEAT FOR OTHER SIDE

IN224
05/12/03