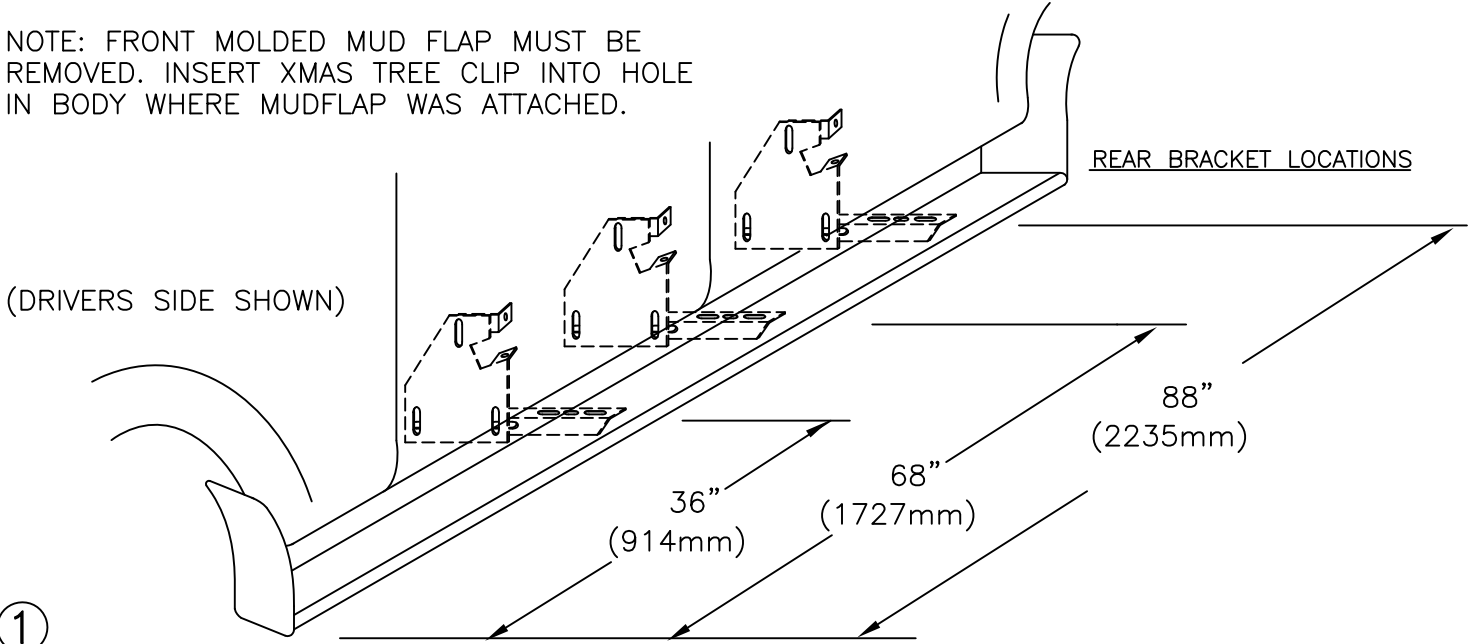


INSTALLATION PARTS LIST:	QTY.	DESCRIPTION	QTY.	DESCRIPTION
	2	RUNNING BOARD 1 DRIVER & 1 PASSENGER	6	HORIZONTAL BRACKET, SUPPORT, 3124F
	4	STONE GUARD 2 LEFT & 2 RIGHT	24	5/16"x 3/4" BOLT
	8	3/8"x1 SELF TAPPING SCREW	24	5/16-18 HEX WASHER HEAD NUT
	24	#14x3/4" TEK SCREW	6	FLAT BRACKET, FL100
	12	1/4x5/8" SQUARE HEAD SCREW	2	FENDER BRACE BT46
	12	1/4-20 HEX NUT	6	BENT TAB AS01
			2	XMAS TREE CLIPS

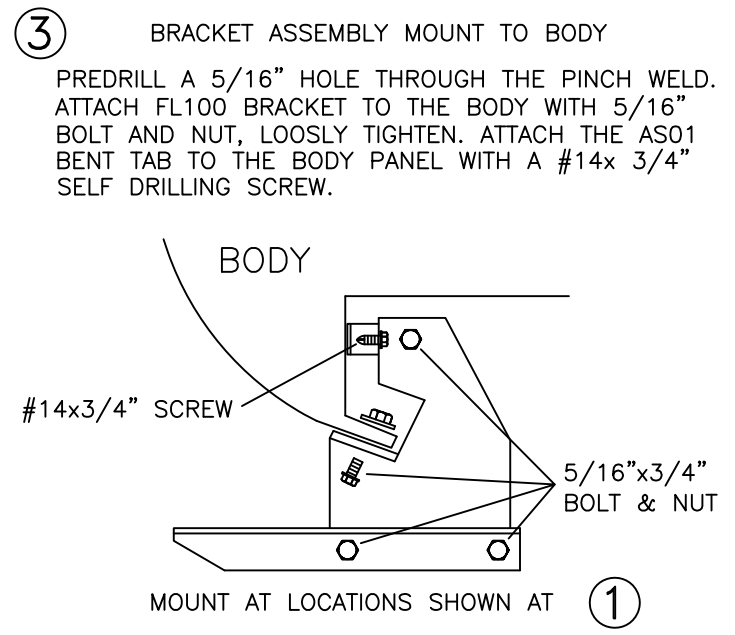
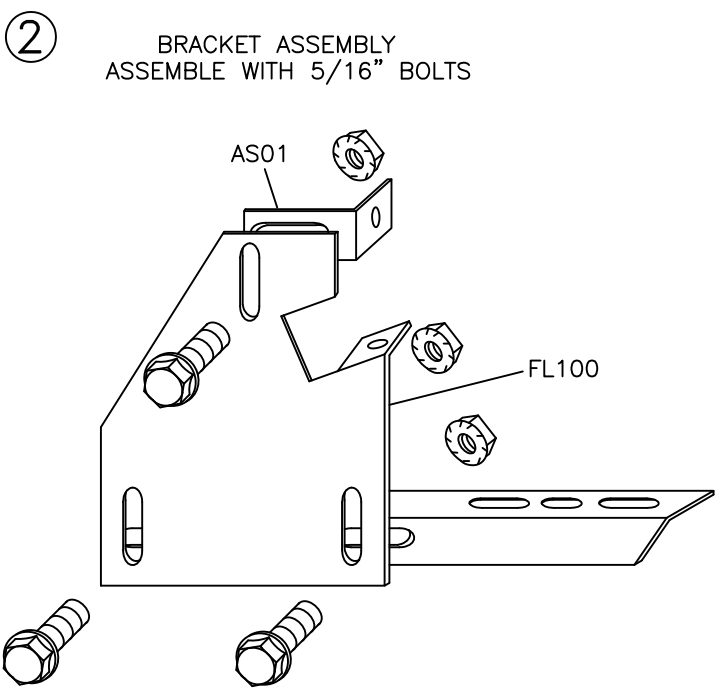
NOTE: USE MODIFIED REAR STONEGUARDS FOR SIDING DOORS. CONTACT OWENS AT 800 726 9367.

TOOLS REQUIRED: 5/16" DRILL * 1/2" HEX SOCKET * 1/2" WRENCH * 5/16" NUT DRIVER * 3/8" NUT DRIVER

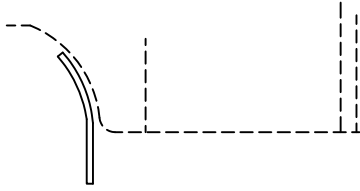
NOTE: FRONT MOLDED MUD FLAP MUST BE REMOVED. INSERT XMAS TREE CLIP INTO HOLE IN BODY WHERE MUDFLAP WAS ATTACHED.



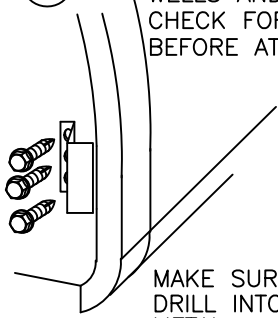
① MEASURE FROM FRONT WHEEL WELL TO BRACKET LOCATIONS. MARK THIS DIMENSION ON THE PINCH WELD



④ BEND STONE GUARD BY HAND AND KNEE TO FIT THE WHEEL WELL BEFORE INSTALLING TO RUNNING BOARD

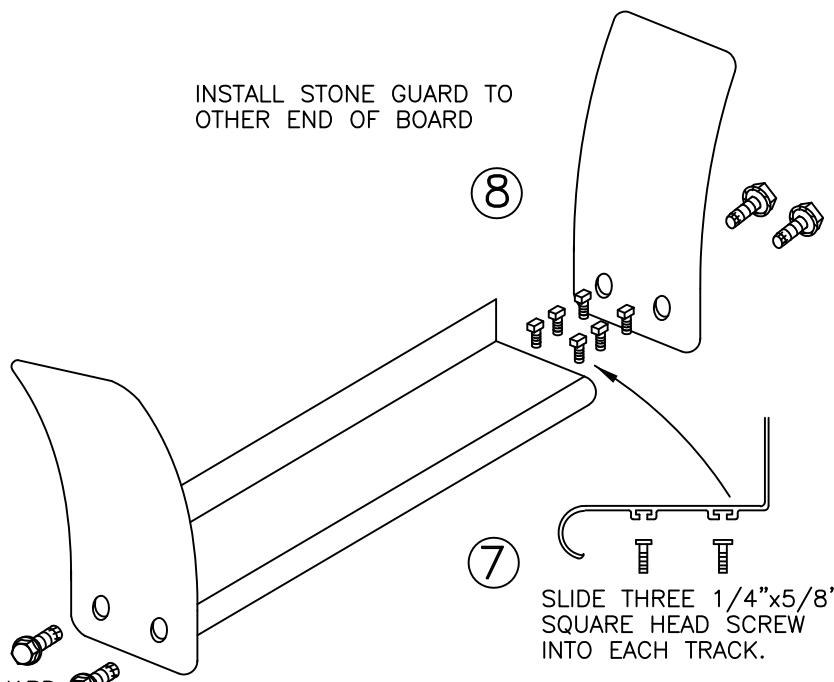


⑤ MEASURE UP 4-6" IN THE REAR WHEEL WELLS AND ATTACH A BT46 ON EACH SIDE. CHECK FOR THE BEST FIT INTO STEEL BEFORE ATTACHING WITH #14 SCREWS.



MAKE SURE YOU DRILL INTO SHEET METAL

⑥ FASTEN FRONT STONE GUARD TO BOARDS WITH 3/8" SELF TAPPING BOLT. BEND STONE GUARD BY HAND AND KNEE TO FIT THE WHEEL WELL



INSTALL STONE GUARD TO OTHER END OF BOARD

⑧

⑦

SLIDE THREE 1/4"x5/8" SQUARE HEAD SCREW INTO EACH TRACK.

⑨

HOLD BOARD IN PLACE, WITH THE REAR RESTING ON THE BACK BRACKET

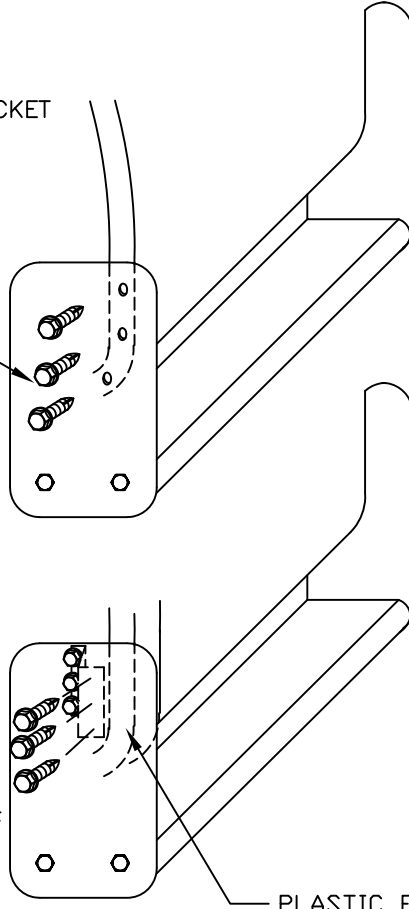
⑩

SCREW THROUGH FRONT STONE GUARDS INTO FENDERWELL LIP USING #14x3/4" SELF DRILLING SCREWS. MAKE SURE YOU DRILL INTO METAL

3 PLACES AT EACH STONE GUARD

⑪

IN THE REAR, SCREW INTO FENDER BRACKET BT46 AND TO THE INSIDE OF THE WHEEL WELL USING 3 #14x3/4" SELF DRILLING SCREWS. THEN SCREW THROUGH THE STONE GUARD AND INTO BT46 USING 3 #14x3/4" SELF DRILLING SCREWS. DO NOT SCREW INTO THE PLASTIC FENDER FLAIR - IT WILL CRACK.

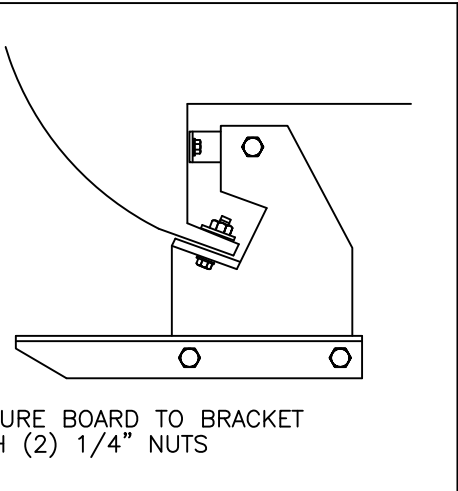


PLASTIC FLAIR

NOTE: BE SURE THAT 1/4" BOLTS ARE PLACED INTO THE BRACKET STEP SUPPORT

⑫

SECURE BOARD TO BRACKET WITH (2) 1/4" NUTS



⑬

WITH BOARD LEVEL TIGHTEN ALL LOOSE BOLTS

IN275B
11/10/05

⑭

REPEAT FOR OTHER SIDE