

Hardware included shown on right.

There are extra components in the bolt pack

Tools required:

- 1/2" socket
- 7/16" socket
- 1/2" wrench
- 3/8" nut driver
- Drill

**DRILLING INTO VEHICLE IS REQUIRED!**

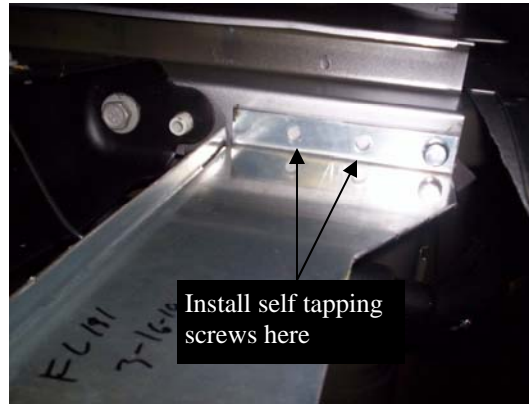


1)



Locate the front bed cross member and install clip nut as shown in **Fig. 1**.

2)



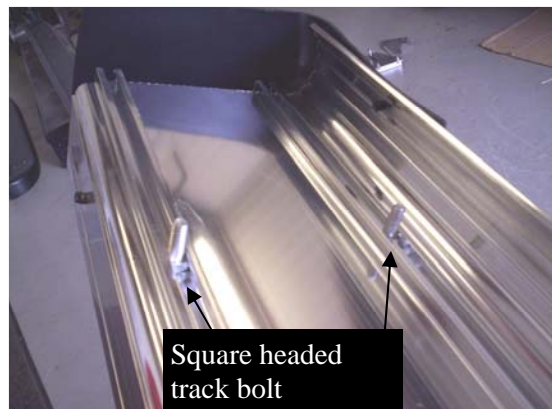
Attach the FL181 bracket to the front bed cross member support, using 5/16" bolt, as shown in **Fig. 2**. Next install self tapping screws into the other holes in the bracket to the cross member.

3)



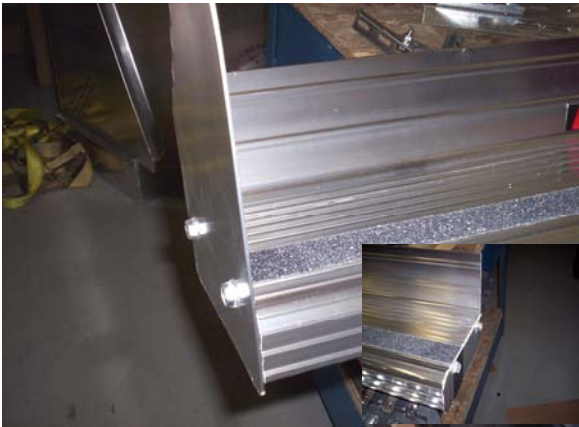
Attach a 3124F angle bracket to the FL181 bracket with 5/16" bolts and nuts. Snug but do not tighten at this time. **Picture shows long bed with extra bracket not needed in short bed.**

4)



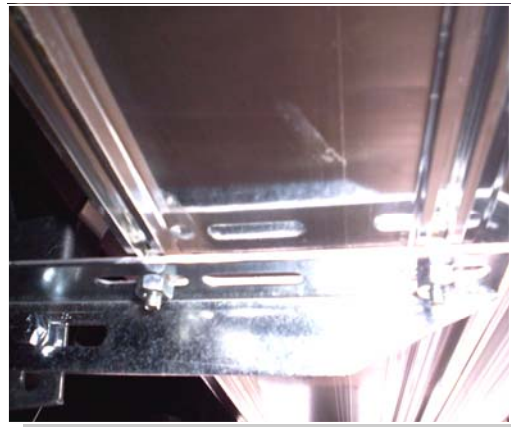
Insert one square headed track bolt into tracks for each bracket.

5)



Attach stone guard and end cap to running board using 3/8" self threading bolts.

6)



Place the board on the brackets with the bolts through the slots. Fasten with 1/4" nuts.

7)



Make sure board is lined up with cab board. Use one self drilling screw to attach the stone guard to the fender lip. Make sure the board is level then use remaining 2 screws to finish attaching stone guard to fender lip.

8)



Tighten any and all loose bolts. Repeat all steps for opposite side.