

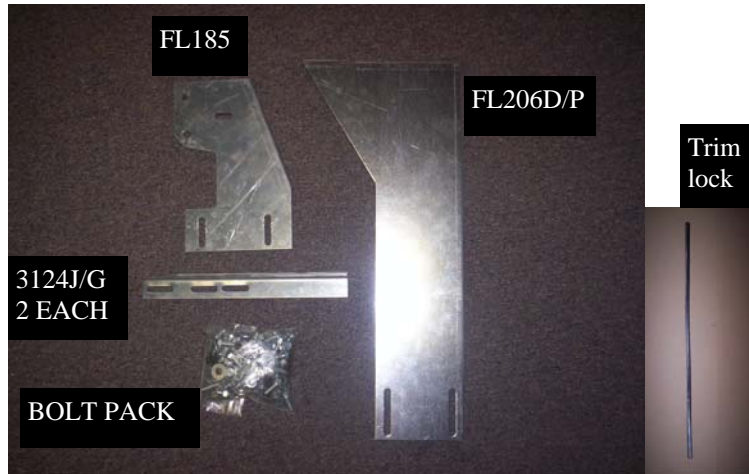
Hardware included shown on right.

DRILLING INTO VEHICLE IS REQUIRED!

Tools required:

- 1/2" socket
- 7/16" socket
- 1/2" wrench
- 3/8" nut driver
- Drill, 1/2" Drill bit

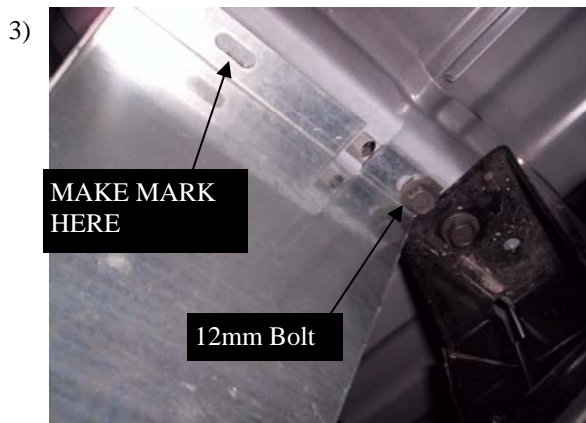
NOTICE RISER HEIGHT IS SHORTER THAN CAB BOARD RISER



Attach the FL185 bracket to the front bed sidewall support, using the factory bed support bolts. Remove them then reinstall.



Cut trim lock to 12" and attach to FL206D and P as shown in **Fig 3**.



In front of rear wheel, above front leaf spring shackle on the bed cross member, attach FL206D/P with 12mm flanged bolt. Just snug bolt. Make a mark in the center of the slot so you can turn bracket and drill a 1/2" hole.



Turn FL206D/P sideways and drill 1/2" hole.

5)



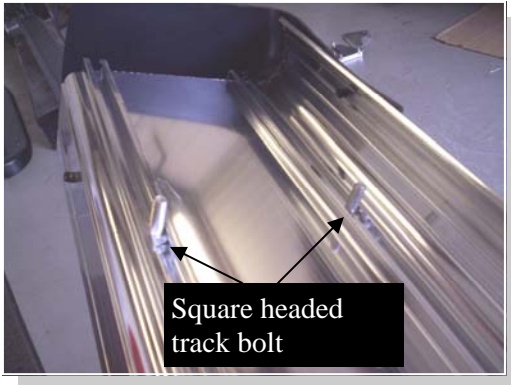
Insert 8mm pull nut, turn bracket back to original position, and install 8mm bolt, flat washer, and lock washer. Tighten 12mm flanged bolt.

6)



Attach a 3124F angle bracket to the FL185, and attach 3124G (the longer one) to FL206D/P with 5/16" bolts and nuts. Snug but do not tighten at this time.

7)



Square headed track bolt

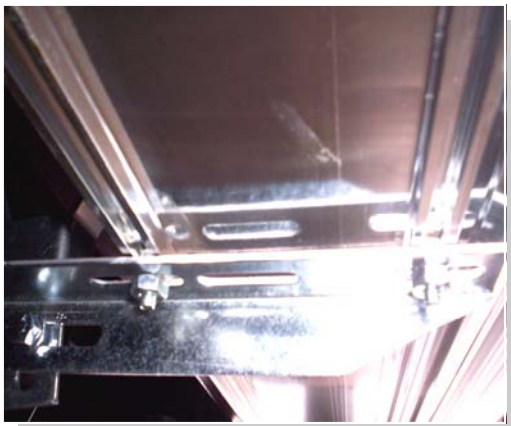
Insert one square headed track bolt into both tracks for each bracket.

8)



Attach stone guard and end cap to running board using 3/8" self threading bolts.

9)



Place the board on the brackets with the bolts through the slots. Fasten with 1/4" nuts.

10)



Use one self drilling screw to attach the stone guard to the fender lip. Make sure the board is level. Use remaining 2 screws to finish attaching stone guard to fender lip. Tighten any and all loose bolts. Repeat all steps for opposite side.