

Hardware included shown on right.

DRILLING INTO VEHICLE IS REQUIRED!

Tools required:

- 1/2" socket
- 1/2" WRENCH
- Drill
- 5/16 Drill bit
- 3/8" nut driver
- 7/16" Socket
- 10mm Socket



1)



Measure from front wheel well back making a mark on the pinch weld at **(DR side 4 1/2", 20 1/4", 35 7/8", 50", 70", 88" 99")** (pass side 4", 20", 35 1/2", 45", 70", 85" 99")

2)



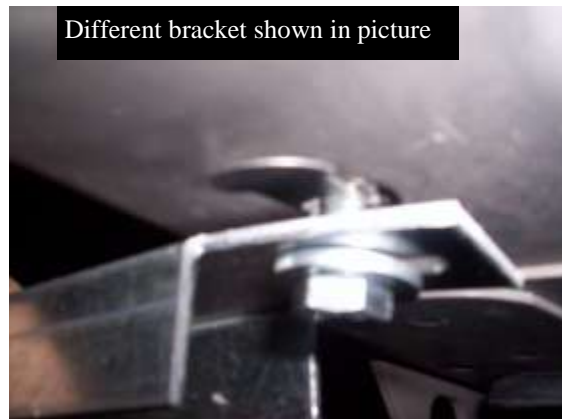
Drill a 5/16" hole in pinch weld at pre-marked location, to insert a 5/16" flanged bolt through pinch weld and FL223 and FL232 (99" on Driver and 98" on Passenger side).

3)



Remove tape from underbody to install 8mm pull nut at 4 1/2" 35 7/8" Driver side, and 4" 20" 35 1/2" Passenger side.

4)



Insert a 8mm bolt and washer through slot in FL223 and attach to 8mm pull nut in underbody, at pre measured locations, in step 3. Snug but do not tighten at this time.

5)



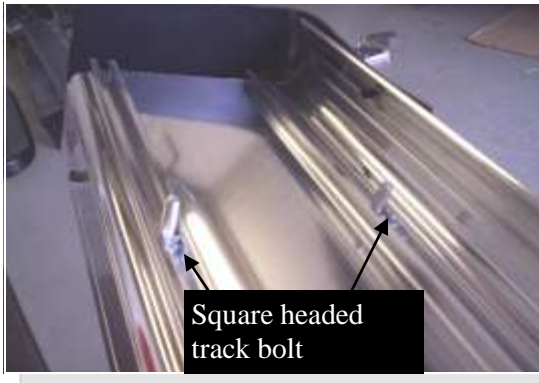
At remaining locations install two self tapping bolts through slot in FL223 and FL232 (Different BRKT shown)

6)



Insert a 5/16" flange bolt trough pinch weld and FL223 and FL232 tighten with a 5/16" flanged nut. (BRKT show on outside of pinch weld for picture purpose only, BRKT mounts to inside of pinch weld)

7)



Insert one square headed track bolt into both tracks for each bracket.

8)



Attach the end caps to the board with 3/8" self threading bolts. (extruded board shown)

9)



Attach 3124F to FL223/FL232 using 5/16" nut and bolts, Snug but don't tighten. Place the board on the brackets with the bolts through the slots. Fasten with 1/4" nuts.

10)



Level and center board, tighten all and any loose nuts and bolts. Repeat for other side.