

11/19/15

Hardware included shown on right
There are extra components in the bolt back

Tools Required

- 1/2" Socket
- 1/2" Wrench
- 7/16" Socket
- 3/8" Nut driver
- 5/16" Nut driver
- Drill for mud flap
- 5/16" Drill Bit
- Tape measure

Re-enforcement nut
2 holes

BT71D X 1

CB77 X 8

CB76 X 2

BT71P X 1

BT70 X 8



M8 inpull nut

Short Re-enforcement nut
1 hole

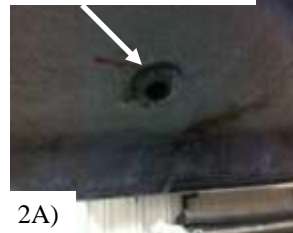


1A)

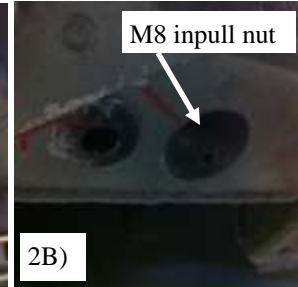


1B)

Short Re-enforcement



2A)



2B)

M8 inpull nut



Short Re-enforcement

2C)

STEP 1: BRACKET LOCATIONS

All bracket locations are factory holes. Measurements are to help locate these holes. There will be two holes at each location, excluding the first bracket. One hole will be in the frame of the vehicle, the other is located in line on the rocker panel. First measuring from the front wheel well (**Photo 1A**), measure back 7 3/4" mark hole. Next, measuring from the front jack plate (**Photo 1B**) measure back and mark the next 4 locations.

Driver Side

BRKT 1- 7 3/4"
BRKT 2- 32"
BRKT 3- 67"
BRKT 4- 88"
BRKT 5- 118 1/2"

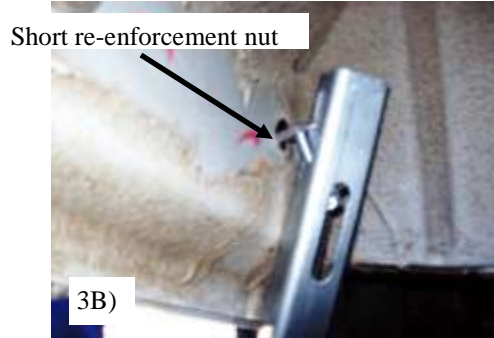
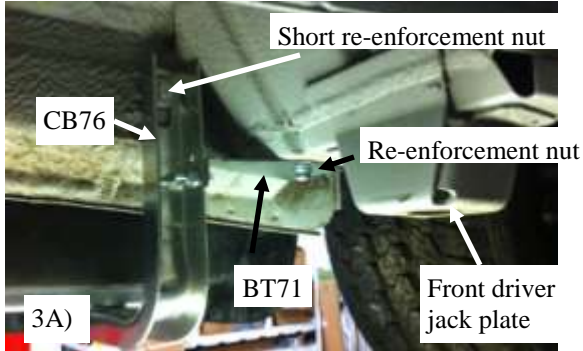
Passenger Side

BRKT 1- 7 3/4"
BRKT 2- 32"
BRKT 3- 67"
BRKT 4- 88"
BRKT 5- 118 1/2"

STEP 2: At marked bracket locations, remove plastic or rubber plugs in lower rocker panel and frame rail.

When tightening, slide bolt up to edge of hole in body to insure maximum support of the short re-enforcement nut.

NOTE: (See **Photo 2B**) At bracket location 3, remove the plug with the smaller hole. This location will require the smaller size M8 inpull nut (2 provided)



STEP 3: Mount CB76 in bracket location 1. Use a 5/16" x 1-1/2" bolt through washer then through CB76 then thread into short re-enforcement nut. Slide nut into hole in rear rocker panel hand tighten. **When tightening, slide bolt up to edge of hole in body to insure maximum support of the short re-enforcement nut.** (Photo 3A)

Place a 5/16" x 3/4" bolt through the BT71 into re-enforcement nut engaging a couple of threads. Slide re-enforcement nut into the hole next to the jack plate and mount BT71. Attach BT71 to CB76 with a 5/16 bolt and nut. **Hand tighten leave loose for adjustment.** (Photo 3B)



STEP 4: Mount a BT70 on the rocker panel using 5/16" x 1-1/2" bolt through washer and BT70 then thread into short re-enforcement nut. Slide nut into hole in lower rocker panel. **When tightening, slide bolt up to edge of hole in body to insure maximum support of the short re-enforcement nut.**

Hand tighten leave loose for adjustment. (Photo 4A)

Mount a CB77 using a 5/16" x 1-1/2" bolt through washer then through CB77 thread into short re-enforcement nut then slide nut into the hole in the frame. **When tightening, slide bolt up to edge of hole in body to insure maximum support of the short re-enforcement nut.**

Hand tighten leave loose for adjustment (Photo 4A)

Align the bottom hole of the BT70 with the hole in the side of the CB77. Secure with provided 5/16" bolt and nut.

Location 3

Location 4

Location 5 on 159" WB


STEP 5: Repeat process for bracket locations 3, 4 and 5. only use 5/16" x 3/4" bolts in 2nd, 3rd and 4th position because of door track inside rocker panel **On passenger side as shown in above photo's**

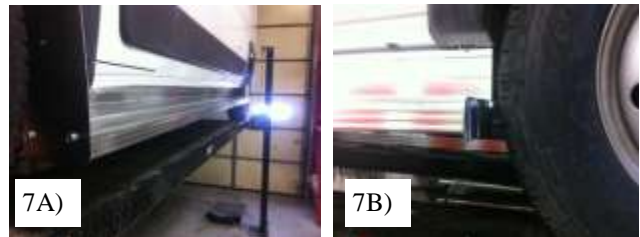
NOTE: The BT70 can be rotated, as well as used on the opposite side of the CB77 to allow brackets to come out straight as possible


STEP 6:

First slide (1) 1/4"-20 square head bolts into the front track for each bracket location and slide (1) 1/4"-20 square head bolts into the rear track of the running board for each bracket location. These bolts will attach the board to the brackets. After sliding all the bolts in, attach stone guard at front and end caps at rear using two self tapping 3/8" bolts into the tracks the square head bolts were inserted in. The self tapping bolts will be serrated at the bottom. (Photo 6A)


Step 8:

In the front wheel well, mount stone guard with self tapping screws. For no-drill application. Remove factory screws in the wheel well. Mark hole locations on the stone guard. Remove stone guard and drill 5/16" hole in marked locations then re-install stone guard and replace factory screws. (Photo 8A)


STEP 7:

Place the 1/4" bolts through the slots in all bracket locations. Attach the board to the brackets with included 1/4" nuts. The holes of the brackets will align with the mounting surface on the under side of the running board. (Photo 7A and 7B)

Make sure the board is even front to back and level. Tighten all bolts and nuts to secure board in position.



STEP 9: Repeat all steps on passenger side.