

IN 559

Tools Required

- 1/2" Socket
- 1/2" Wrench
- 3/8" Nut driver on Drill
- 1/8" Allen wrench
- Vice Grip Pliers
- Loctite (Blue)

Hardware Included

- BRACKETS SHOW ON RIGHT
- 1- BOLT PACK

Torque Specification:

- 1/4" Bolts - 6 Ft Lbs.
- 5/16" Bolts - 19 Ft Lbs.

05/11/18

Locate Driver and Passenger Bracket Locations

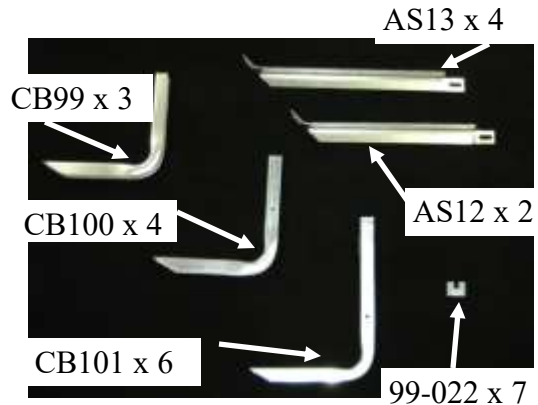
Measuring from the front wheel well back, mark the following locations on the pinch weld. There will be factory holes in line with these marks that will be used to mount the running board brackets.

DRIVER

- LOCATION 1: 9"
- LOCATION 2: 21 5/8"
- LOCATION 3: 44 1/2"
- LOCATION 4: 64"
- LOCATION 5: 108"
- LOCATION 6: 126 1/2"

PASSENGER

- LOCATION 1: 8"
- LOCATION 2: 20 1/2"
- LOCATION 3: 45"
- LOCATION 4: 64 3/4"
- LOCATION 5: 84 1/2"
- LOCATION 6: 108"
- LOCATION 7: 127"



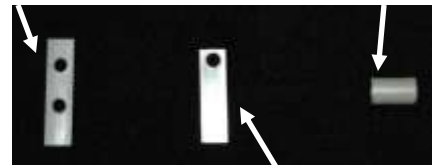
RE-ENFORCEMENT NUT x 18

SPACER x 7

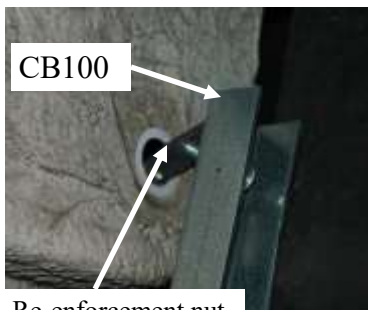


99-022

Estimated time of
Installation: 45 minutes



SHORT RE-ENFORCEMENT NUT x 2



CB100

Re-enforcement nut

Install in 1st location Driver side

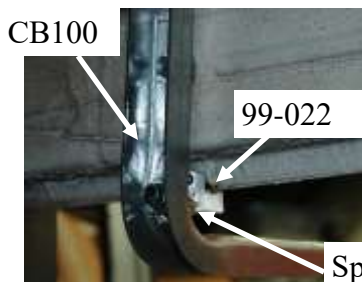
At the location 1 and 6 on Driver side and at the location 1, location 3, location 4 and location 5 and 7 on the passenger side mount a 99-022 pinch weld clamp, by tightening the set screws with 1/8" Allen wrench holding with pair of vise grips for leverage.

The use of Loctite on all set screws is highly recommended to insure they do not loosen up.

Make sure set screws are as tight as possible.

Slide a washer on a 5/16" x 1-1/2" bolt. Then slide the bolt through the top tab of a CB100 and thread a re-enforcement nut only engaging a couple threads and slide nut into hole on rear rocker.

Tighten up the bolt into the nut but leave loose for now for adjustment later.



CB100

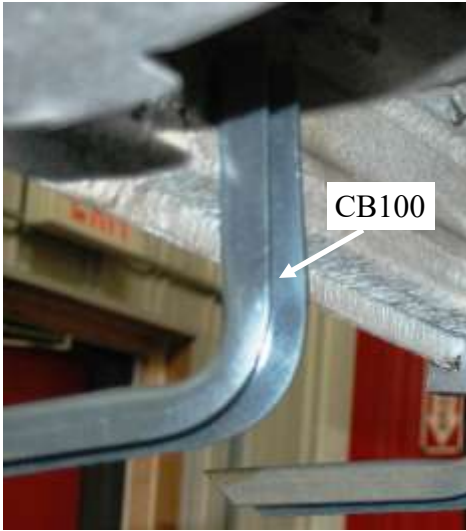
99-022

Spacer tube

Slide a washer on a 5/16" x 1-1/2" bolt. Then slide the bolt through slot in rear of CB100 and spacer tube between the CB100 and 99-022 then thread into the rear of the pinch weld clamp and tighten up the bolt into the clamp but leave loose for now for adjustment later.

IN 559

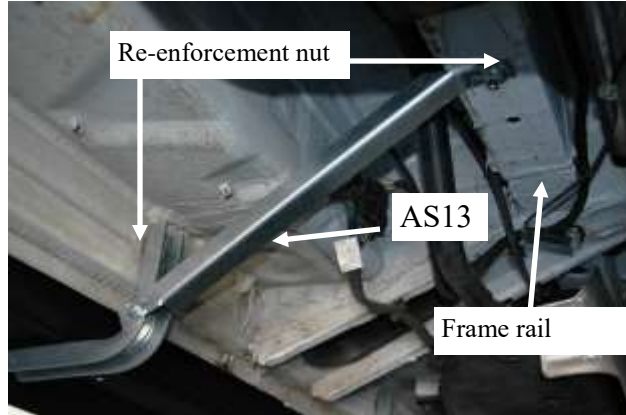
05/11/18



Install in 2nd location Driver side

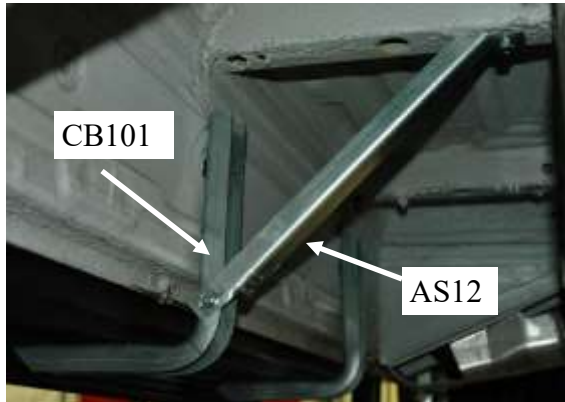
Slide a washer on a 5/16" x 1-1/2" bolt. Then slide the bolt through the top tab of a CB100 and thread a re-enforcement nut only engaging a couple threads and slide nut into hole on rear rocker.

Tighten up the bolt into the nut but leave loose for now for adjustment later.



Slide a washer on a 5/16" x 1-1/2" bolt. Then slide the bolt through the top tab of a AS13 and thread a re-enforcement nut only engaging a couple threads and slide nut into hole on frame rail. Then place a 5/16" x 3/4" bolt through the slot on AS13 then through hole in side of the CB 100 and place flange nut onto the threads.

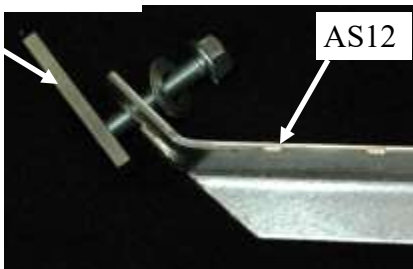
Tighten up the bolt into the nut but leave loose for now for adjustment later.



Install in 3rd and 4th location Driver side

Slide a washer on a 5/16" x 1-1/2" bolt. Then slide the bolt through the top tab of a CB101 and thread a re-enforcement nut only engaging a couple threads and slide nut into hole on rear rocker.

Re-enforcement nut



Slide a washer on a 5/16" x 1-1/2" bolt. Then slide the bolt through the top tab of a AS12 and thread a re-enforcement nut only engaging a couple threads and slide nut into hole on frame rail. Then place a 5/16" x 3/4" bolt through the slot on AS12 then through hole in side of the CB 101 and place flange nut onto the threads.

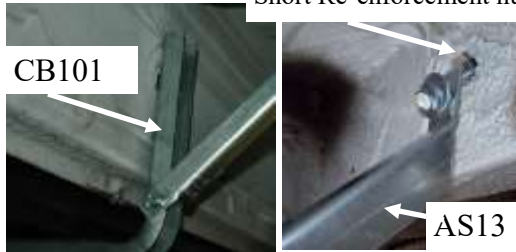
Tighten up the bolt into the nut but leave loose for now for adjustment later.

IN 559

05/11/18

Short Re-enforcement nut

Install in 5th location Driver side

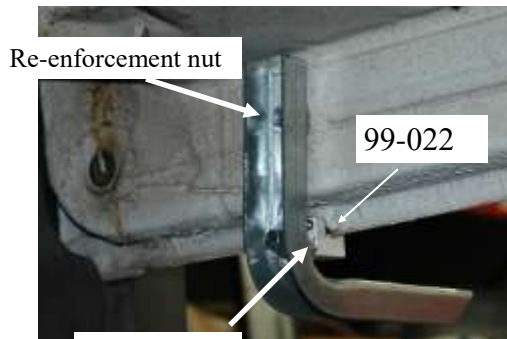


Slide a washer on a 5/16" x 1-1/2" bolt. Then slide the bolt through the top tab of a CB101 and thread a re-enforcement nut only engaging a couple threads and slide nut into hole on rear rocker.

Slide a washer on a 5/16" x 1-1/2" bolt. Then slide the bolt through the top tab of a AS13 and thread a Short re-enforcement nut only engaging a couple threads and slide nut into hole in frame rail.

Then place a 5/16" x 3/4" bolt through the slot on AS13 then through hole in side of the CB 101 and place flange nut onto the threads.

Tighten up the bolt into the nut but leave loose for now for adjustment later.



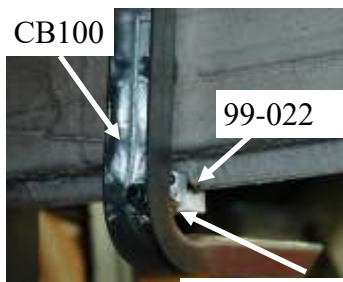
Install in 6th location Driver side

Slide a washer on a 5/16" x 1-1/2" bolt. Then slide the bolt through the top tab of a CB101 and thread a re-enforcement nut only engaging a couple threads and slide nut into hole on rear rocker.

Tighten up the bolt into the nut but leave loose for now for adjustment later.

Slide a washer on a 5/16" x 1-1/2" bolt. Then slide the bolt through slot in rear of CB101 and spacer tube between the CB101 and 99-022 then thread into the rear of the pinch weld clamp and tighten up the bolt into the clamp but leave loose for now for adjustment later.

Install in 1st location Passenger side



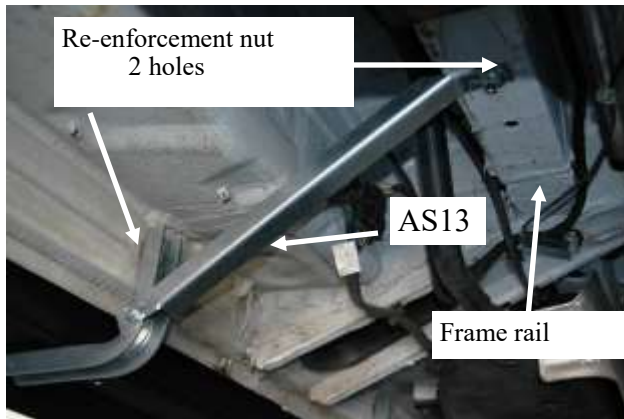
Slide a washer on a 5/16" x 1-1/2" bolt. Then slide the bolt through the top tab of a CB100 and thread a re-enforcement nut only engaging a couple threads and slide nut into hole on rear rocker.

Tighten up the bolt into the nut but leave loose for now for adjustment later.

Slide a washer on a 5/16" x 1-1/2" bolt. Then slide the bolt through slot in rear of CB100 and spacer tube between the CB100 and 99-022 then thread into the rear of the pinch weld clamp and tighten up the bolt into the clamp but leave loose for now for adjustment later.

IN 559

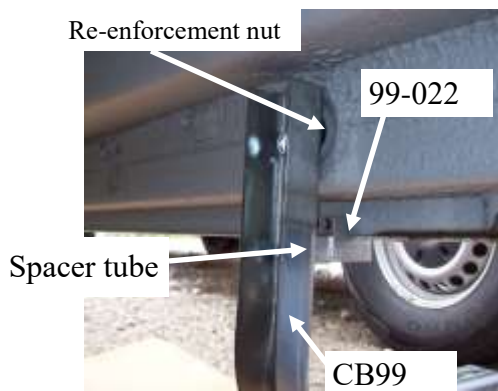
05/11/18



Install in 2nd location Passenger side

Slide a washer on a 5/16" x 1-1/2" bolt. Then slide the bolt through the top tab of a AS13 and thread a re-enforcement nut only engaging a couple threads and slide nut into hole on frame rail. Then place a 5/16" x 3/4" bolt through the slot on AS13 then through hole in side of the CB 100 and place flange nut onto the threads.

Tighten up the bolt into the nut but leave loose for now for adjustment later.

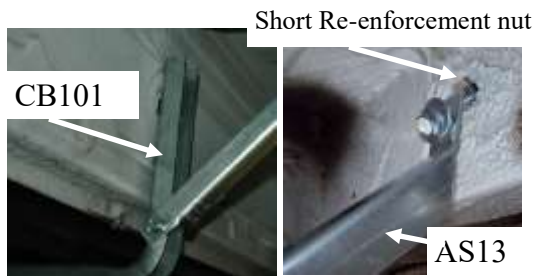


Install in 3rd and 4th and 5th location Passenger side

Slide a washer on a 5/16" x 1-1/2" bolt. Then slide the bolt through the top tab of a CB99 and thread a re-enforcement nut only engaging a couple threads and slide nut into hole on rear rocker.

Tighten up the bolt into the nut but leave loose for now for adjustment later.

Slide a washer on a 5/16" x 1-1/2" bolt. Then slide the bolt through slot in rear of CB99 and spacer tube between the CB99 and 99-022 then thread into the rear of the pinch weld clamp and tighten up the bolt into the clamp but leave loose for now for adjustment later.



Install in 6th location Passenger side

Slide a washer on a 5/16" x 1-1/2" bolt. Then slide the bolt through the top tab of a CB101 and thread a re-enforcement nut only engaging a couple threads and slide nut into hole on rear rocker.

Slide a washer on a 5/16" x 1-1/2" bolt. Then slide the bolt through the top tab of a AS13 and thread a Short-re-enforcement nut only engaging a couple threads and slide nut into hole in frame rail.

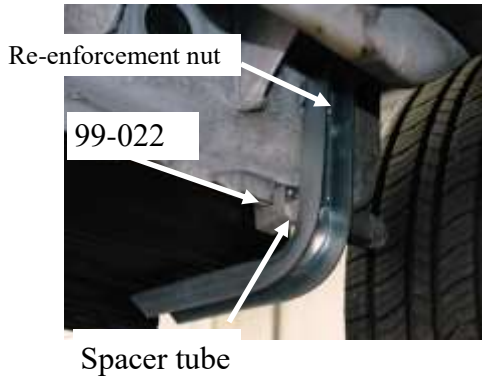
Then place a 5/16" x 3/4" bolt through the slot on AS13 then through hole in side of the CB 101 and place flange nut onto the threads.

Tighten up the bolt into the nut but leave loose for now for adjustment later.

IN 559

05/11/18

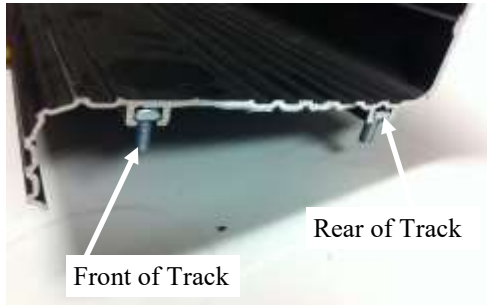
Install in 7th location Passenger side



Slide a washer on a 5/16" x 1-1/2" bolt. Then slide the bolt through the top tab of a CB101 and thread a re-enforcement nut only engaging a couple threads and slide nut into hole on rear rocker.

Tighten up the bolt into the nut but leave loose for now for adjustment later.

Slide a washer on a 5/16" x 1-1/2" bolt. Then slide the bolt through slot in rear of CB101 and spacer tube between the CB101 and 99-022 then thread into the rear of the pinch weld clamp and tighten up the bolt into the clamp but leave loose for now for adjustment later.



Insert Mounting Bolts and Install End Caps

First slide (1) 1/4-20 square head bolt into the front track and (1) into the rear track of the running board for each bracket location. These bolts will attach the board to the brackets. After sliding all the bolts in. Attach the end caps using two self tapping 3/8" bolts into the tracks the square head bolts were inserted in. The self tapping bolts will be serrated at the bottom.

Mount the Aluminum Running Boards

Slide the 1/4-20 bolts through the slots in the top of all the CB brackets. Secure the board to the brackets with a 1/4" nut in all locations. Position the board so it sits flush with the front and rear wheel wells. The very top of the board should rest up against the plastic molding that sticks out slightly along the bottom of the vehicle. Once the board is in the correct position, tighten all nuts and bolts on the mounting brackets. Repeat the same process on the passenger side.

