

IN 583

Bracket Kit 10-1303

5/18/18

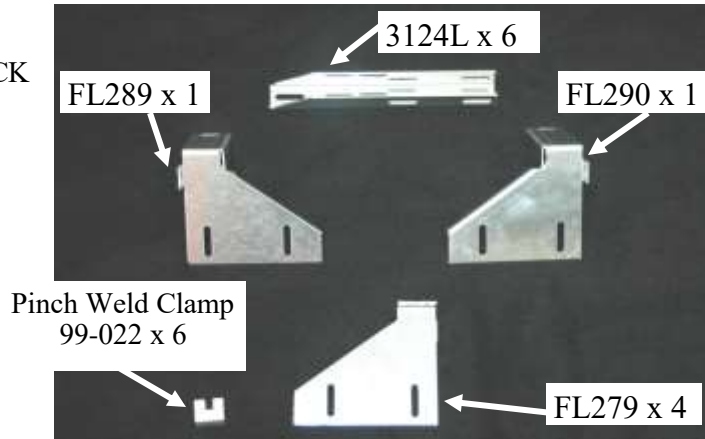
Tools Required

- 10mm Socket
- 1/2" Socket
- Ratchet
- 1/2" Wrench
- 1/8" Allen Wrench
- Vise Grip Pliers
- Tape Measure
- Loctite (Blue)

Hardware Included

- BRACKETS SHOW ON RIGHT
- 1- BOLT PACK

No Drilling into Vehicle is Required



Torque Specification:

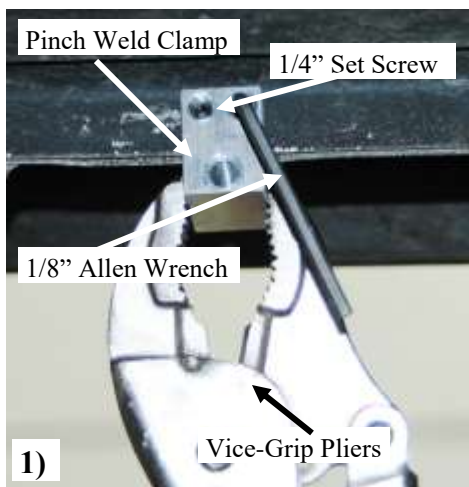
- 5/16" Bolt - 19 Ft Lbs.
- 1/4" Set Screw - 10 Ft Lbs.
- M6 Bolt - 8 Ft Lbs.

Estimated time of Installation: 30 minutes



Measuring from the back side of the front mud flap as shown in photo. Mark the inside of pinch weld with marker.
 Driver side Positions: 1st = 8 1/4", 2nd = 31 3/4", 3rd = 61 1/2"
 Passenger side Positions: 1st = 8 1/4", 2nd = 29 3/4", 3rd = 59 1/2"

The marks on pinch weld will be the centers of the 99-022 pinch weld clamps.

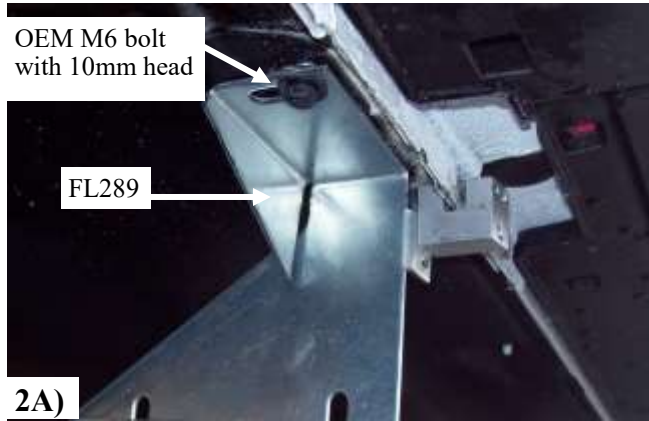


- 1) At each mark, mount the pinch weld clamp. You will have to pry the lower plastic away to fit clamp onto pinch weld metal. Tighten the set screws with 1/8" Allen wrench holding with pair of vise grips for leverage.

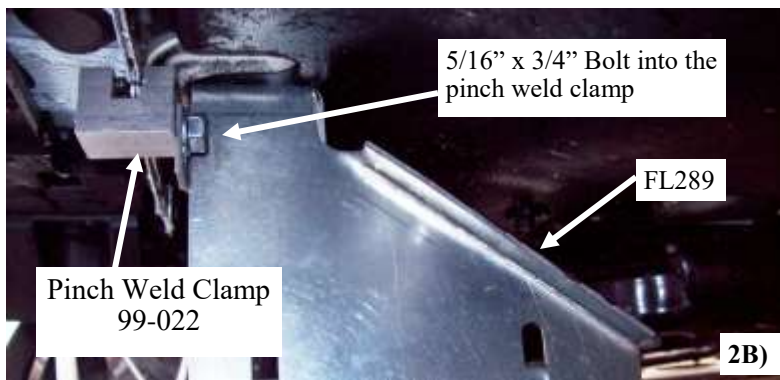
The use of Loctite on all set screws is highly recommended to insure they do not loosen up.

Make sure set screws are as tight as possible.

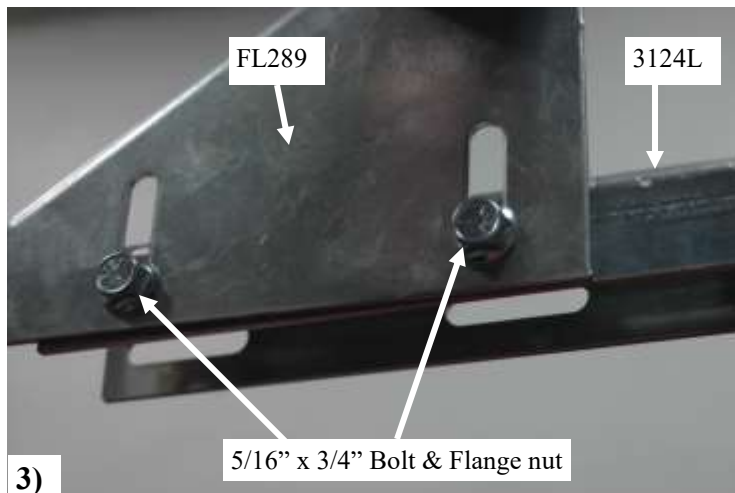
Driver 1st Location



2A) Remove the M6 bolt with 10mm socket. Place bolt through the top slot in FL289 bracket and thread back into threaded hole removed from. **Picture 2A**

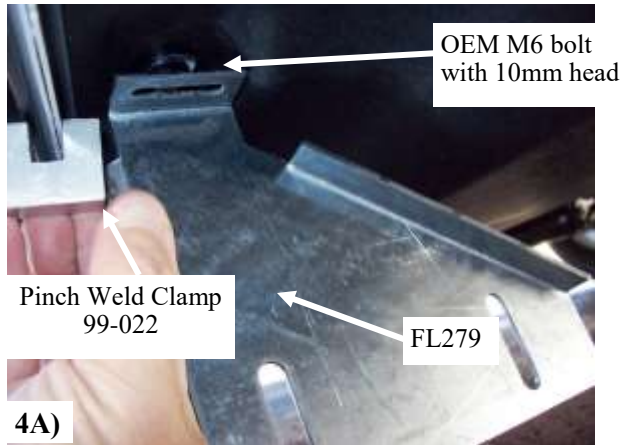


2B) Thread a 5/16" x 3/4" bolt through the slot in FL289 and into pinch weld clamp (99-022) **Picture 2B**

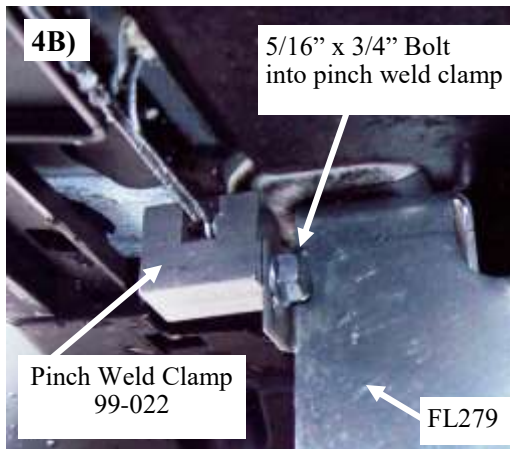


3) Mount the 3124L channel onto FL289 with two 5/16" x 3/4" bolt and flange nuts. **Picture 3**

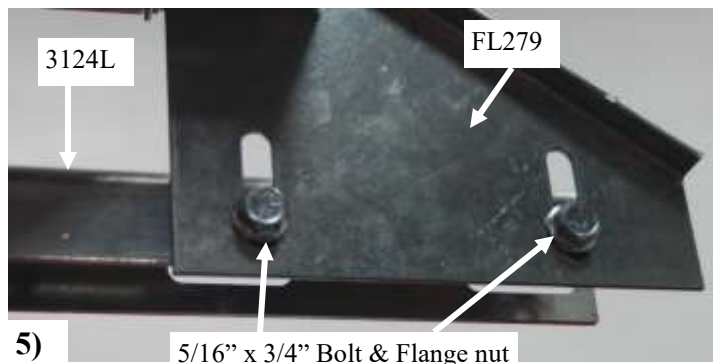
Driver 2nd and 3rd Location



- 4A) Remove the M6 bolt with 10mm socket. Place bolt through the top slot in FL279 bracket and thread back into threaded hole removed from. **Picture 4A**

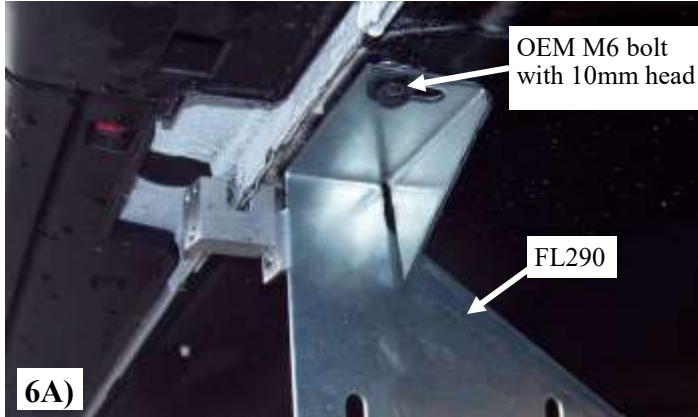


- 4B) Thread a 5/16" x 3/4" bolt through the slot in FL279 and into pinch weld clamp (99-022) **Picture 4B**

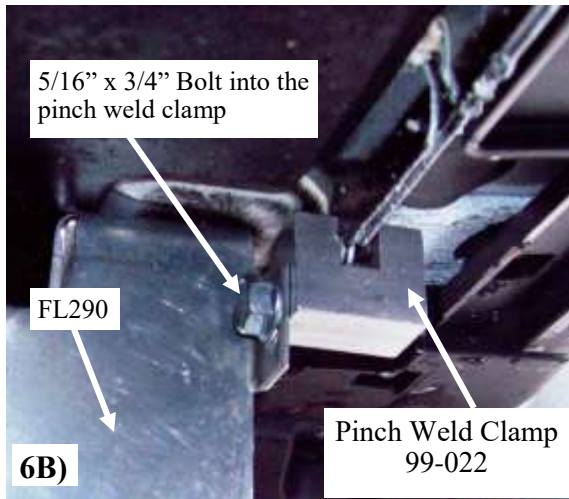


- 5) Mount the 3124L channel onto FL279 with two 5/16" x 3/4" bolt and flange nuts. **Picture 5**

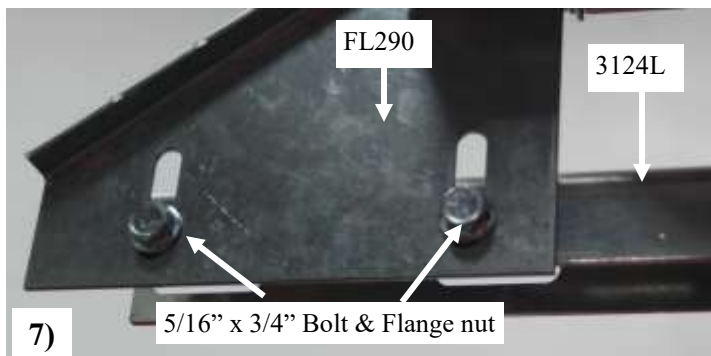
Passenger 1st Location



- 6A)** Remove the M6 bolt with 10mm socket. Place bolt through the top slot in FL290 bracket and thread back into threaded hole removed from. **Picture 6A**

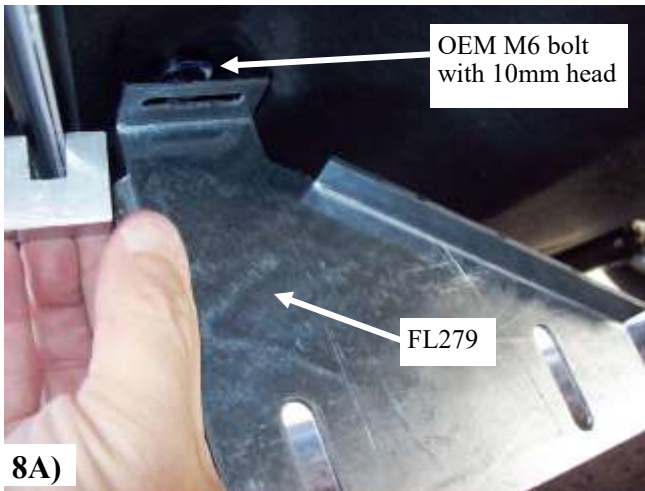


- 6B)** The slot on other side of FL290 should line up with the threaded hole in pinch weld clamp (99-022) thread a 5/16" x 3/4" bolt through the slot in FL290 and into pinch weld clamp (99-022) **Picture 6B**

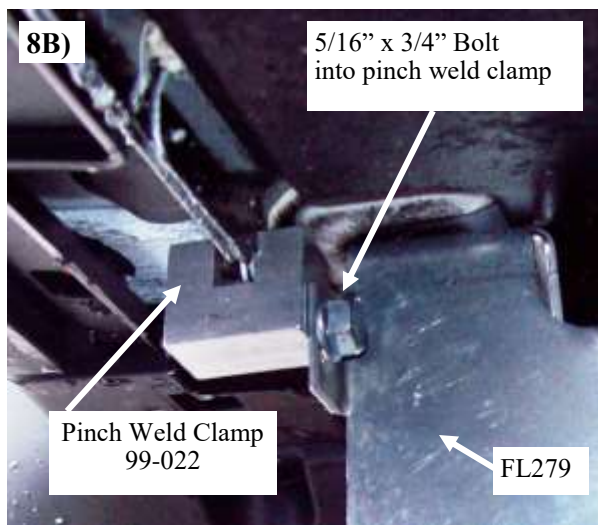


- 7)** Mount the 3124L channel onto FL290 with two 5/16" x 3/4" bolt and flange nuts. **Picture 7**

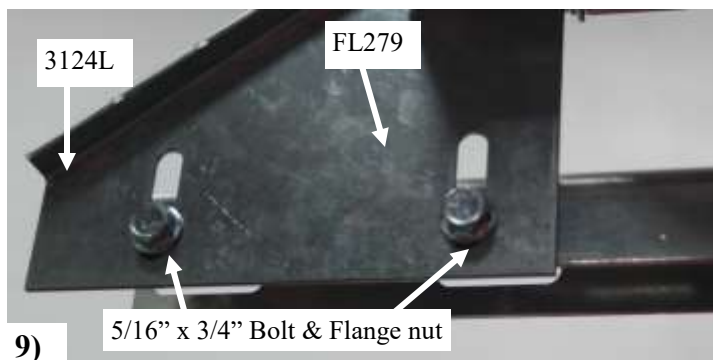
Passenger 2nd and 3rd Location



8A) Remove the M6 bolt with 10mm socket. Place bolt through the top slot in FL279 bracket and thread back into threaded hole removed from. **Picture 8A**



8B) Thread a 5/16" x 3/4" bolt through the slot in FL279 and into pinch weld clamp (99-022) **Picture 8B**



9) Mount the 3124L angle onto FL279 with two 5/16" x 3/4" bolt and flange nuts. **Picture 9**



- 10) Place the running board on the brackets and center board between the front and rear mud flap. Install the self tapping screws through the 3124L bracket and into the galvanized steel plate on the under side of the board.

- 11) Level board and tighten any and all loose nuts and bolts on both sides.

