

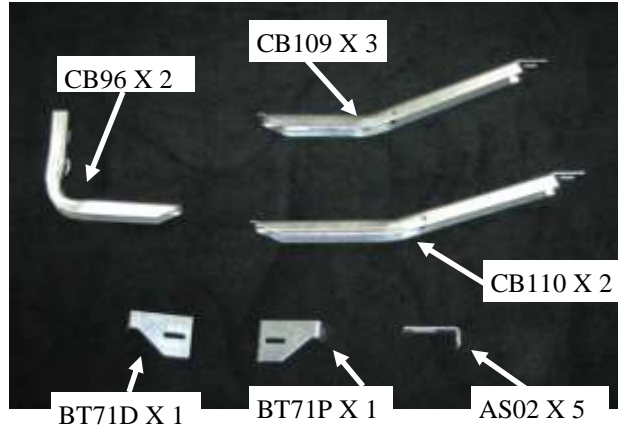
Bracket Kit 10-1298 Wide Step

5/7/16

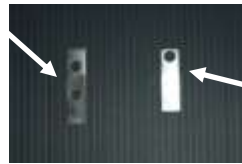
Hardware included shown on right

Tools Required

- 1/2" Socket
- 1/2" Wrench
- 7/16" Socket
- 3/8" Nut driver
- 5/16" Nut driver
- Drill for mud flap
- 5/16" Drill Bit
- Tape measure



Re-enforcement nut
2 holes



Short Re-enforcement nut
1 hole



STEP 1: BRACKET LOCATIONS

All bracket locations are factory holes. Measurements are to help locate these holes. There will be two holes at each location, excluding the first bracket. One hole will be in the frame of the vehicle, the other is located in line on the rocker panel. First measuring from the front wheel well (**Photo 1A**), measure back 7 3/4" mark hole. Next, measuring from the front jack plate (**Photo 1B**) measure back and mark the next locations.

Driver Side

- BRKT 1- 7 3/4"
- BRKT 2- 36"

Passenger Side

- BRKT 1- 7 3/4"
- BRKT 2- 35 1/2"
- BRKT 3- 49 3/4"
- BRKT 4- 67"
- BRKT 5- 80 3/4"

Some Brackets may be Angled from body

Short Re-enforcement



2A)

Short Re-enforcement

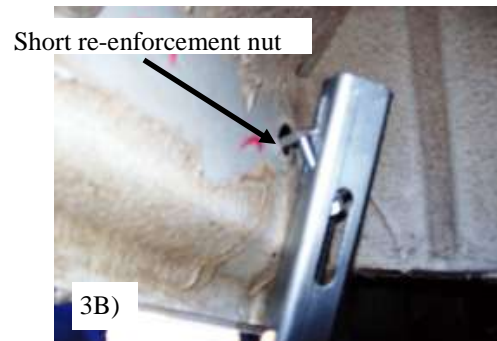
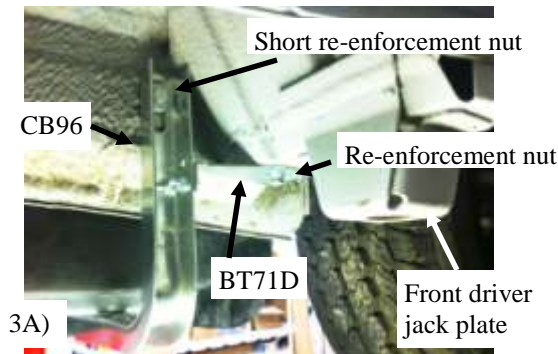


2B)

STEP 2: At marked bracket locations, remove plastic or rubber plugs in lower rocker panel and frame rail.

When tightening, slide bolt up to edge of hole in body to insure maximum support of the short re-enforcement nut.

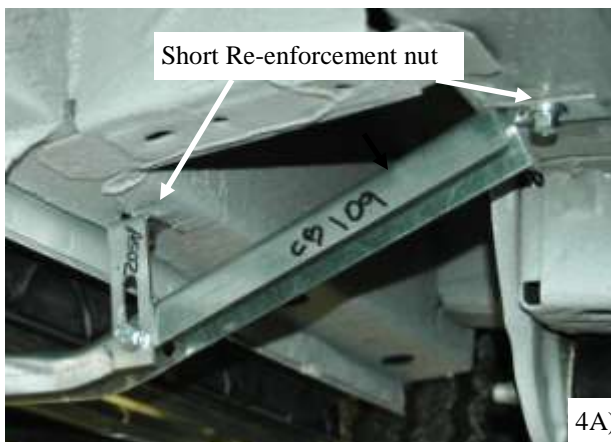
Driver Side Location 1



STEP 3: Mount CB96 in bracket location 1. Use a 5/16" x 1-1/2" bolt through CB96 then thread into short re-enforcement nut. Slide nut into hole in rear rocker panel hand tighten. **When tightening, slide bolt up to edge of hole in body to insure maximum support of the short re-enforcement nut.** (Photo 3A)

Place a 5/16" x 1-1/2" bolt through the BT71D (flange up) into re-enforcement nut engaging a couple of threads. Slide re-enforcement nut into the hole next to the jack plate and mount BT71D. Attach BT71D to CB96 with a 5/16" x 3/4" bolt and flange nut. **Hand tighten leave loose for adjustment.** (Photo 3B)

Driver Side Location 2

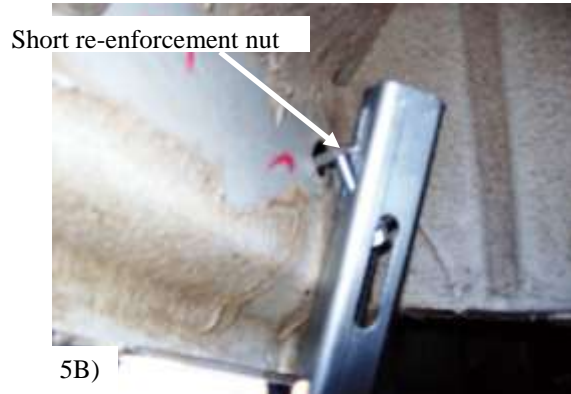
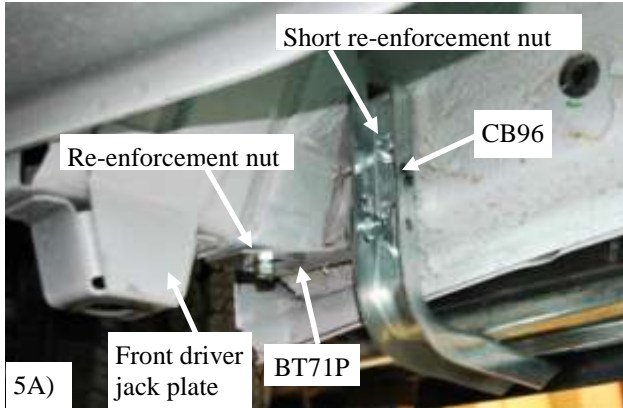


STEP 4: Mount a AS02 on the rocker panel using 5/16" x 3/4" bolt through AS02 then thread into short re-enforcement nut. Slide nut into hole in lower rocker panel. **When tightening, slide bolt up to edge of hole in body to insure maximum support of the short re-enforcement nut.** **Hand tighten leave loose for adjustment.** (Photo 4A)

Mount a CB109 using a 5/16" x 1-1/2" bolt through CB109 thread into short re-enforcement nut then slide nut into the hole in the frame. **When tightening, slide bolt up to edge of hole in body to insure maximum support of the short re-enforcement nut.** **Hand tighten leave loose for adjustment** (Photo 4A)

Align the slotted hole of the AS02 with the hole in the side of the CB109. Secure with provided 5/16" bolt and nut.

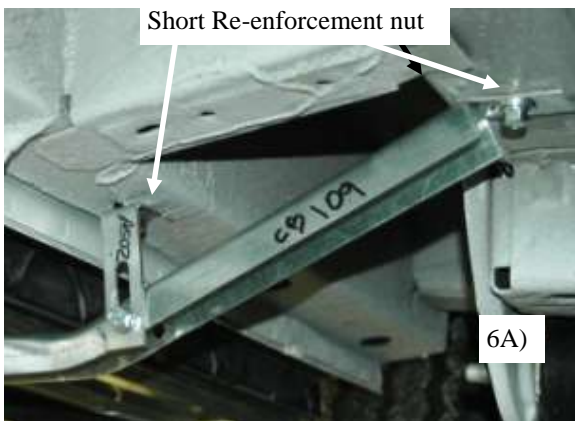
Passenger Side Location 1



STEP 5: Mount CB96 in bracket location 1. Use a 5/16" x 1-1/2" bolt through CB96 then thread into short re-enforcement nut. Slide nut into hole in rear rocker panel hand tighten. **When tightening, slide bolt up to edge of hole in body to insure maximum support of the short re-enforcement nut.** (Photo 5A)

Place a 5/16" x 1-1/2" bolt through the BT71P (Flange up) into re-enforcement nut engaging a couple of threads. Slide re-enforcement nut into the hole next to the jack plate and mount BT71P. Attach BT71P to CB96 with a 5/16" x 3/4" bolt and flange nut. **Hand tighten leave loose for adjustment.** (Photo 5B)

Passenger Side Location 2

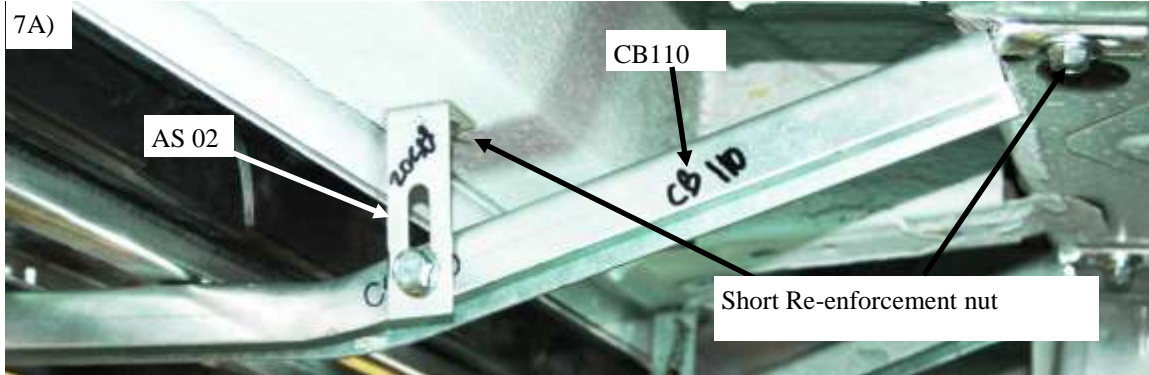


STEP 6: Mount a AS02 on the rocker panel using 5/16" x 3/4" bolt through AS02 then thread into short re-enforcement nut. Slide nut into hole in lower rocker panel. **When tightening, slide bolt up to edge of hole in body to insure maximum support of the short re-enforcement nut.** **Hand tighten leave loose for adjustment.** (Photo 6A)

Mount a CB109 using a 5/16" x 1-1/2" bolt through CB109 thread into short re-enforcement nut then slide nut into the hole in the frame. **When tightening, slide bolt up to edge of hole in body to insure maximum support of the short re-enforcement nut.** **Hand tighten leave loose for adjustment** (Photo 6A)

Align the slotted hole of the AS02 with the hole in the side of the CB109. Secure with provided 5/16" x 3/4" bolt and flange nut.

Passenger Side Location 3



STEP 7: Mount a AS02 on the rocker panel using 5/16" x 3/4" bolt through AS02 then thread into short re-enforcement nut. Slide nut into hole in lower rocker panel. **When tightening, slide bolt up to edge of hole in body to insure maximum support of the short re-enforcement nut.**

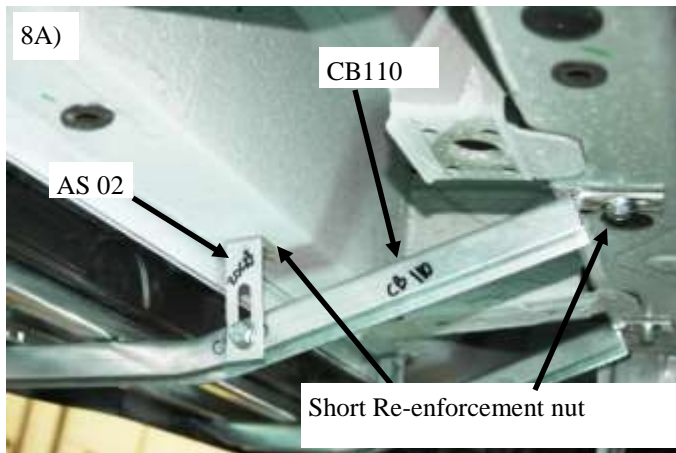
Hand tighten leave loose for adjustment. (Photo 7A)

Mount a CB110 using a 5/16"x1-1/2" bolt through CB110 thread into short re-enforcement nut then slide nut into the hole in the frame. **When tightening, slide bolt up to edge of hole in body to insure maximum support of the short re-enforcement nut.**

Hand tighten leave loose for adjustment (Photo 7A)

Align the slotted hole of the AS02 with the hole in the side of the CB110. Secure with provided 5/16" x 3/4" bolt and flange nut.

Passenger Side Location 4



STEP 8: Mount a AS02 on the rocker panel using 5/16" x 3/4" bolt through AS02 then thread into short re-enforcement nut. Slide nut into hole in lower rocker panel. **When tightening, slide bolt up to edge of hole in body to insure maximum support of the short re-enforcement nut.**

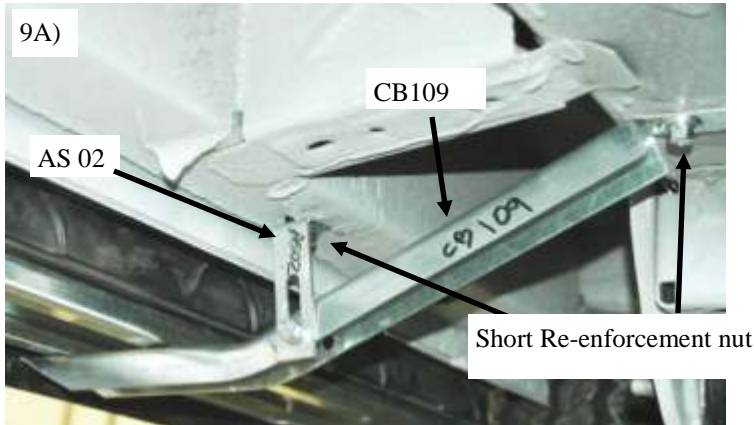
Hand tighten leave loose for adjustment. (Photo 8A)

Mount a CB110 using a 5/16"x1-1/2" bolt through CB110 thread into short re-enforcement nut then slide nut into the hole in the frame. **When tightening, slide bolt up to edge of hole in body to insure maximum support of the short re-enforcement nut.**

Hand tighten leave loose for adjustment (Photo 8A)

Align the slotted hole of the AS02 with the hole in the side of the CB110. Secure with provided 5/16" x 3/4" bolt and flange nut.

Passenger Side Location 5



STEP 9: Mount a AS02 on the rocker panel using 5/16" x 3/4" bolt through AS02 then thread into short re-enforcement nut. Slide nut into hole in lower rocker panel. **When tightening, slide bolt up to edge of hole in body to insure maximum support of the short re-enforcement nut.** Hand tighten leave loose for adjustment. (Photo 9A)

Mount a CB109 using a 5/16"x1-1/2" bolt through CB109 thread into short re-enforcement nut then slide nut into the hole in the frame. **When tightening, slide bolt up to edge of hole in body to insure maximum support of the short re-enforcement nut.**

Hand tighten leave loose for adjustment (Photo 9A)

Align the slotted hole of the AS02 with the hole in the side of the CB109. Secure with provided 5/16" x 3/4" bolt and flange nut.

Position the board so it sits flush with the front and rear wheel wells. The very top of the board should rest up against the bottom of lower rocker panel of the vehicle. Once the board is in the correct position, tighten all nuts and bolts on the mounting brackets. Repeat the same process on the passenger side.



STEP 10:

Place the running board on the brackets and install the self tapping screws through the bracket and into the galvanized steel plate on the under side of the board. **Fig 10A**