

**IN 615**

**Tools Required**

- Ratchet
- 13mm Socket
- 13mm Wrench
- 1/8" Allen Wrench
- 7/16" Socket
- 3/4" Socket
- 19mm Socket
- Vice Grip Pliers
- Tape Measure
- Loctite (Blue)

**Hardware Included**

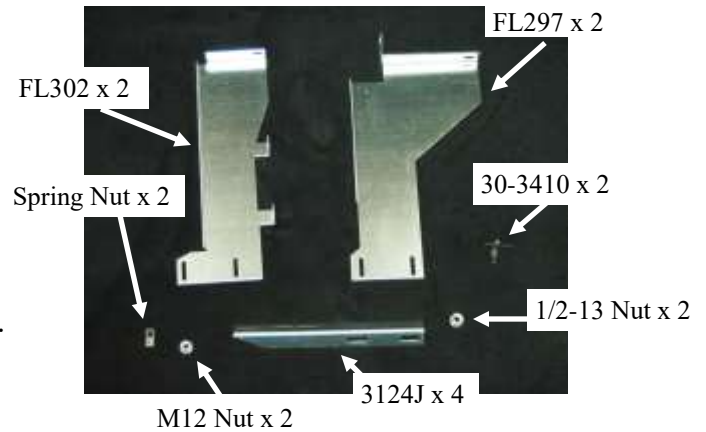
- BRACKETS SHOW ON RIGHT
- 1- BOLT PACK

**Torque Specification:**

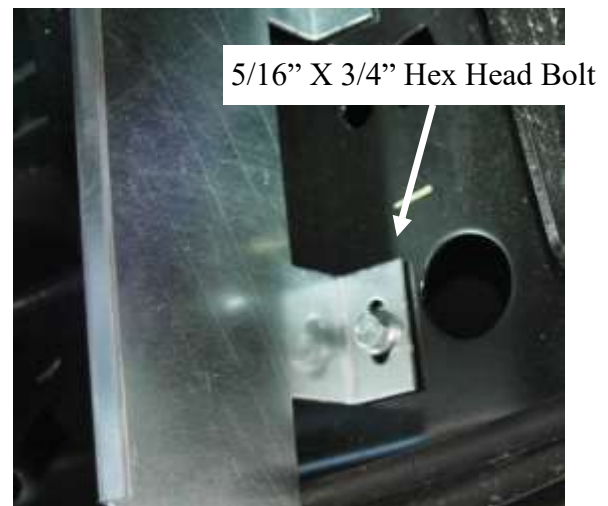
- 5/16" Bolt - 19 Ft Lbs.
- M12 Flange Nut - 42 Ft Lbs.
- 1/4" Set Screw - 10 Ft Lbs.
- 1/2" Flange Nut - 45 Ft Lbs.

Estimated time of  
Installation: 30 minutes

**Bed Boards**

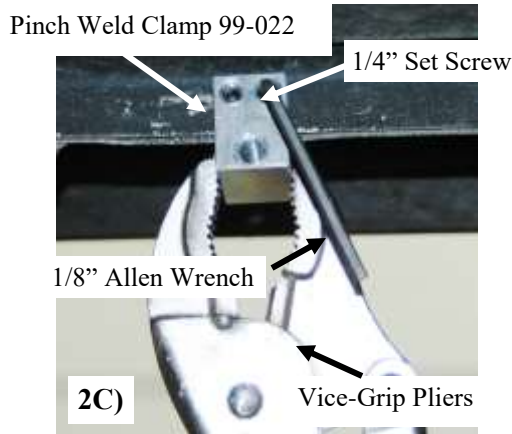
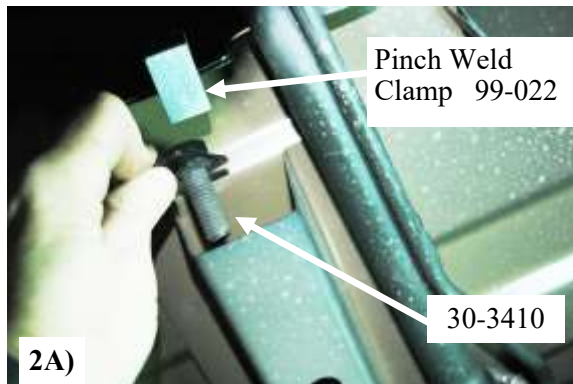


**Install in 1st location Driver side Front Bed Rail**



On the front bed rail locate the bolt holding the bed to frame, slide the FL 302 rear slot onto the threads coming through the frame. Thread a M12 onto the threads to secure FL302. Slide a 5/16" spring clip into slot in frame and place a 5/16" x 3/4" flange bolt through the hole in tab coming off the FL302 bracket

**Install in 2nd location Driver side Rear Bed Rail**

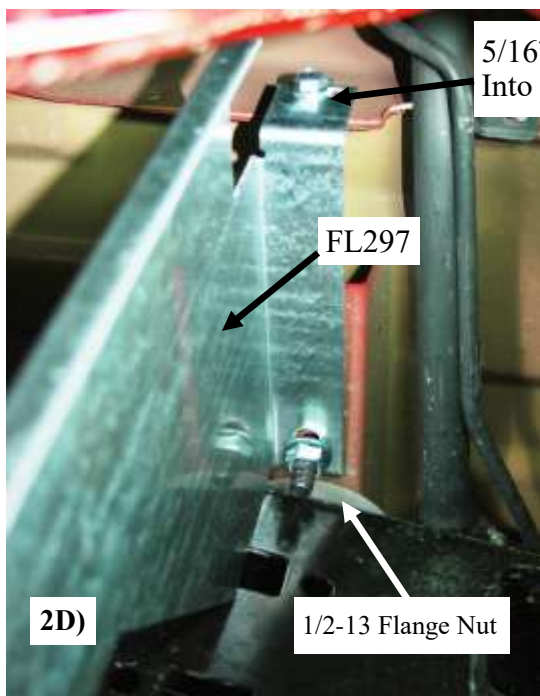


Slide a 30-3410 stud plate into the bed frame rail as shown in **Picture 2A and 2B** to have the threads come down through the hole in bed frame rail.

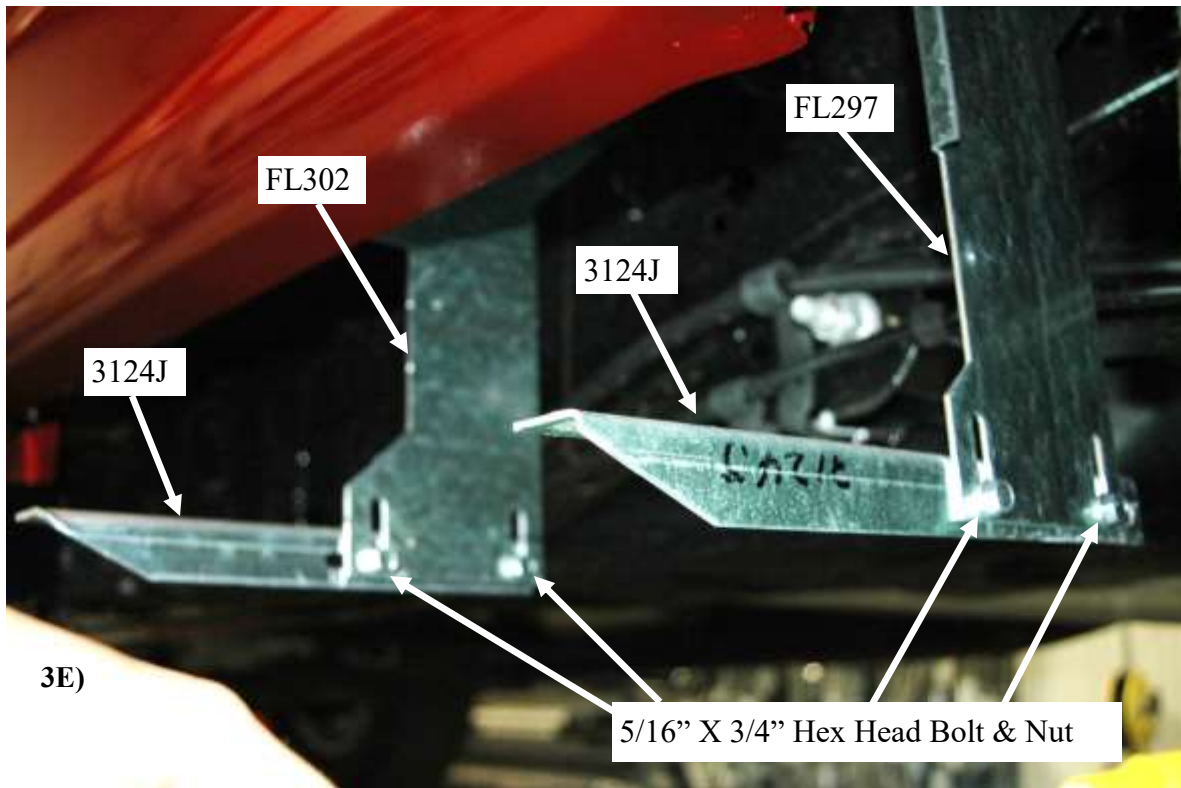
Center a pinch weld clamp 99-022 on lip in front of the bed frame rail. as shown in **Picture 2B**  
Tighten the set screws with 1/8" Allen wrench holding with pair of vise grips for leverage.  
**Picture 2C**

**The use of Loctite on all set screws is highly recommended to insure they do not loosen up.**

**Make sure set screws are as tight as possible.**



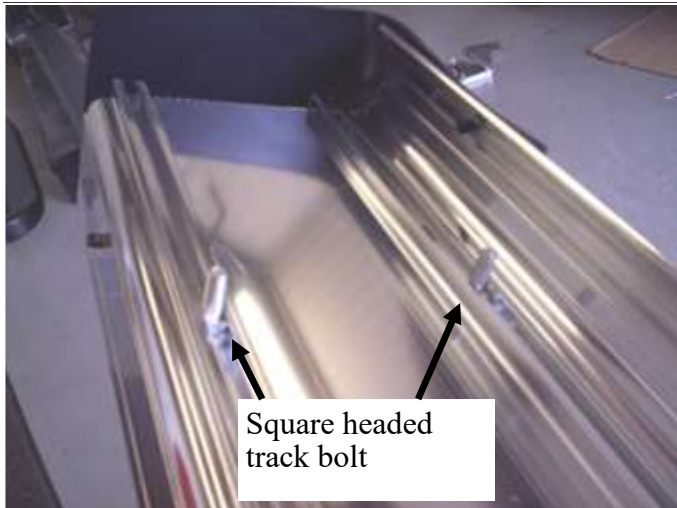
Place the FL297 bracket up so the rear slot fits onto the threads of the 30-3410 then thread the 1/2-13 flange nut onto the threads of the 30-3410 stud plate. **Picture 2D**  
Thread a 5/16 x 3/4 flange bolt through the top slot of the FL297 and into the pinch weld clamp 99-022 tighten both to secure bracket to the vehicle. **Picture 2D**



Place the 3124J angle bracket onto the FL302 and FL297 brackets and secure to each other with two 5/16" x 3/4" hex head bolts and two flange nuts.  
**Picture 3E**

**Leave loose for adjustment at this time.**

4)



Insert one square headed track bolt into both tracks for each bracket.

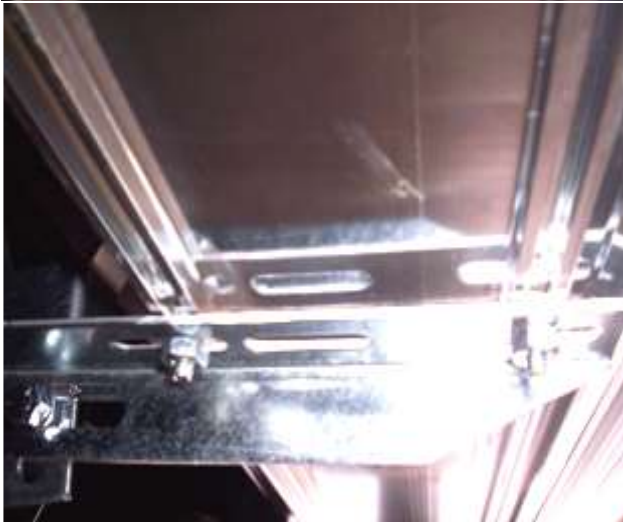
5)



Attach stone guard and end cap to running board using 3/8" self threading bolts.



6)



Place the board on the brackets with the bolts through the slots. Fasten with 1/4" nuts.

7)

**Tighten any and all loose bolts. Repeat all steps for opposite side.**

8)



Make sure board is lined up with cab board. Use one self drilling screw to attach the stone guard to the fender lip. Make sure the board is level, then use remaining 2 screws to finish attaching stone guard to fender lip.



**2015 Ford F150 Reg Cab 8 ft Bed**

Product No.  
**10-1319**

**IN 615**

**Bed Boards**

5/18/18

