

# SPEC-D *Tuning*

## 2006-2010 HONDA CIVIC 4DR. TAIL LIGHTS INSTALLATION INSTRUCTIONS

\*If you experience any difficulties that the instructions did not cover, Please seek assistance at local automotive shop.

\*Please wear protection before you work on your vehicle.

\*An assistant is useful when removing the front bumper from your vehicle.

\*Please be cautious when working with the bumper or any parts belonging to the vehicles' body prevent scratching.

\*Do not make direct contact with the halogen bulb or the wire assembly until the unit has cooled down after use.



### TOOLS AND SUPPLIES REQUIRED

¼" Drive Ratchet

5mm Allen Socket

6" Extension

Needle Nose Pliers

10mm Socket

Stubby Phillips Screwdriver

8mm Socket

### Product Part Numbers:

LT-CV064JM-TM

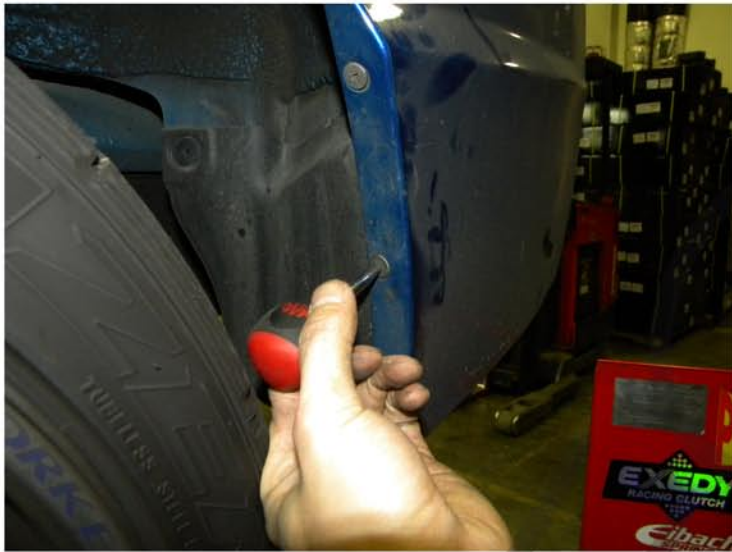
LT-CV064-TM

LT-CV064G-TM



# HONDA CIVIC 4DR. TAIL LIGHTS INSTALLATION INSTRUCTIONS

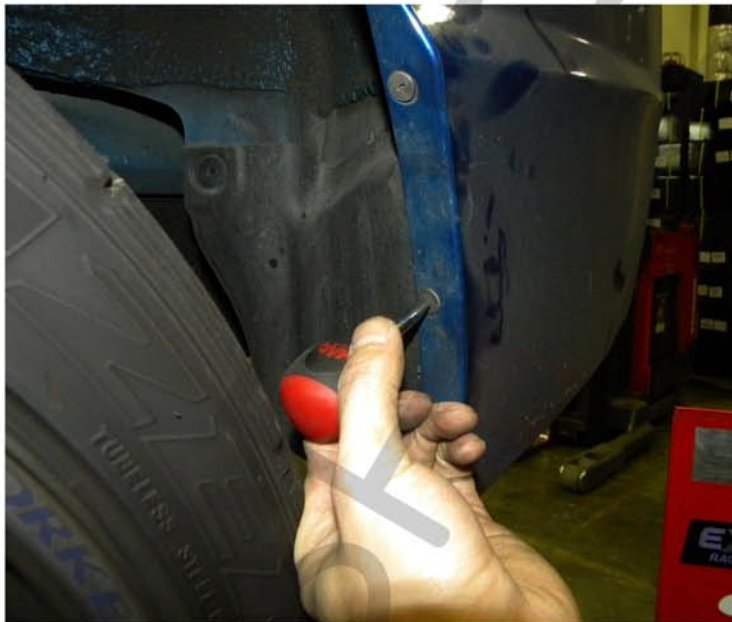
- \*If you experience any difficulties that the instructions did not cover, Please seek assistance at local automotive shop.
- \*Please wear protection before you work on your vehicle.
- \*An assistant is useful when removing the front bumper from your vehicle.
- \*Please be cautious when working with the bumper or any parts belonging to the vehicles' body prevent scratching.
- \*Do not make direct contact with the halogen bulb or the wire assembly until the unit has cooled down after use.



1. Remove the (3) phillips head screws.



2. Remove the phillips head screw



3. Tighten the (3) phillips head screws



4. Remove the 5mm allen head bolt



5. Pull the bumper away from the body of the car



6. Remove the (2) 10mm nuts



7. Remove the plastic moulding



8. Remove the (3) plastic clips



9. Remove the (3) plastic clips



10. Remove the (3) plastic clips

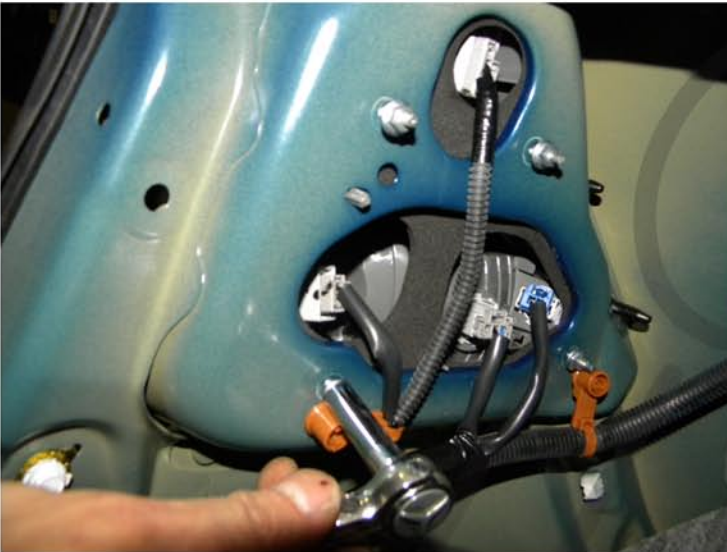


11. Pull the trunk liner aside

Please see the " L.E.D. tail lights installation instructions"  
If your tail lights don't have L.E.D. you can skip the installation instructions.



12. Remove the plastic harness holder



13. Remove the (4) 8mm nuts



14. Remove the tail light harness



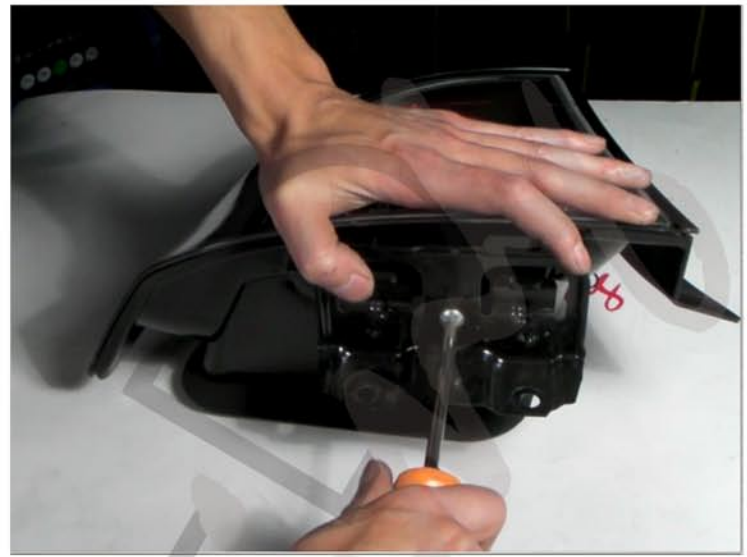
15. Remove the phillips head screw



16. Remove the bracket



17. Place the bracket on the new light



18. Tighten the phillips head screw



19. Place the new light in the stock location, and tighten the (2) 10mm nuts



20. Tighten the (4) 8mm nuts



21. Connect the tail light harness to the new tail light



22. Remove the 10mm bolt



23. Remove the chrome accent



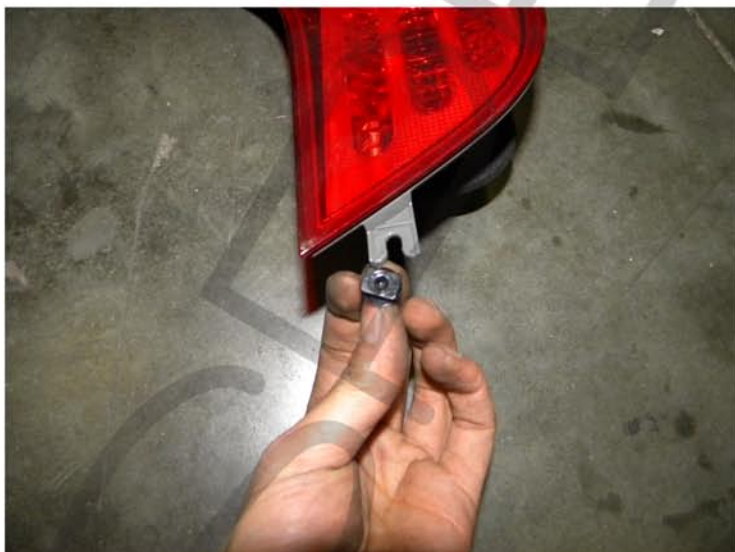
24. Remove the harness from the tail light



25. Remove the (4) 8mm nuts



26. Remove the tail light



27. Remove the plastic clip from the tail light



28. Place the plastic clip onto the new tail light



29. Place the tail light in the stock location



30. Tighten the (4) 8mm nuts



31. Place the harness into the new tail light



32. Replace the chrome moulding

Please see the " L.E.D. tail lights installation instructions"  
If your tail lights don't have L.E.D. you can skip the installation instructions.



33. Tighten the 10mm bolt



34. Replace the (3) plastic clips



35. Replace the plastic moulding



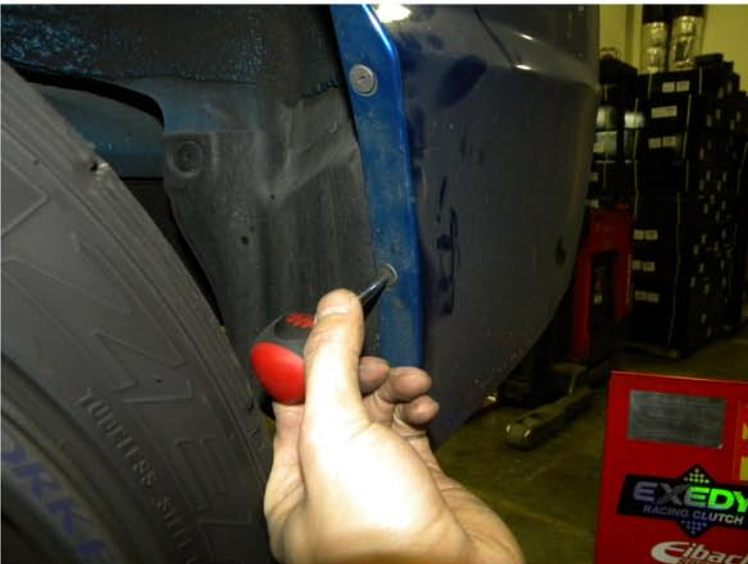
36. Replace the rear bumper



37. Tighten the 5mm allen head bolt



38. Tighten the phillips head screw



39. Replace the (3) phillips head screws



40. The installation is now complete

Please repeat the steps in order from 1 to 39 for the opposite side