



SPYDER

WWW.SPYDERAUTO.COM

INSTALLATION GUIDE: PRO-YD-DCH11-(ALL COLORS)

Tools Required

7, 8, 10mm Socket & Ratchet
Panel Popper
T-15 Torx Driver

Please Note

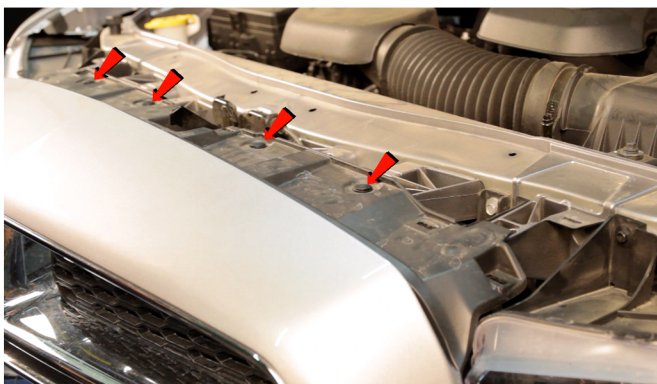
If you are unfamiliar with the installation processes,
professional installation is highly recommended.



1) Open the hood.



2) Pull up to remove [2x] radiator filler panels. Each filler panel is secured by [5x] clips.



3) Remove [4x] plastic retainers that secure the fascia.



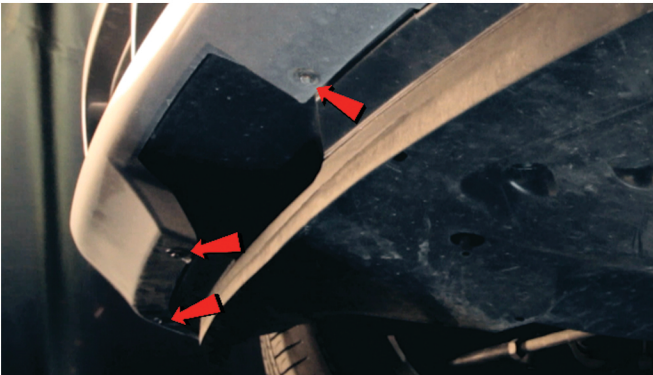
4) Remove the plastic retainer securing the fender liner in the wheel well.



5) Remove [2x] additional plastic retainers securing the fender liner.



6) Remove [1x] 10mm Bolt securing the fascia.



7) Remove [3x] 7mm bolts securing the fascia from below.



8) Remove [3x] 7mm bolts securing the fascia from below.



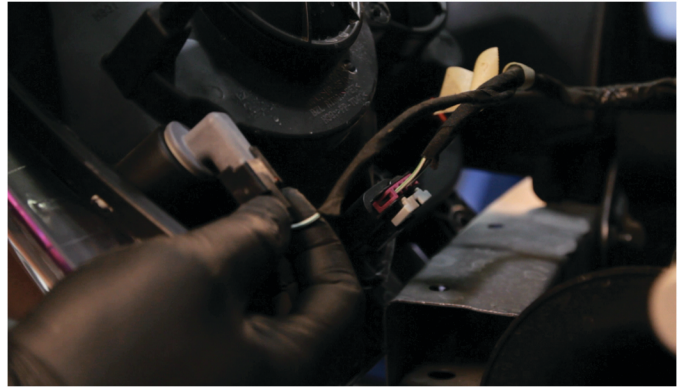
9) Unseat & remove front bumper fascia.



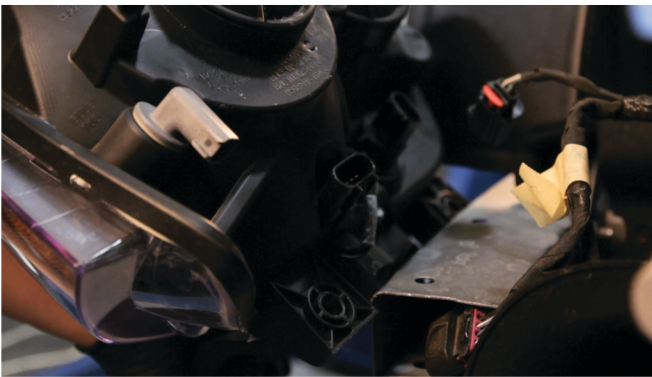
10) Remove [4x] 8mm bolts securing the headlight.



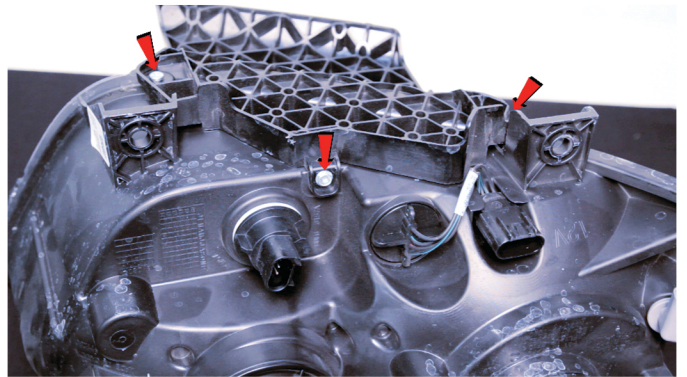
11) Unseat the headlight.



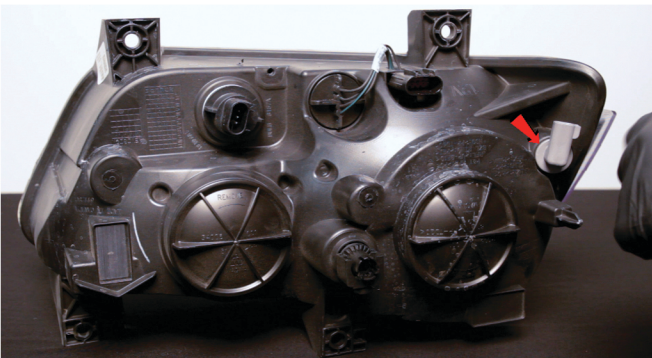
12) Disconnect the sidemarker and low beam harness.



13) Disconnect high beam harness.



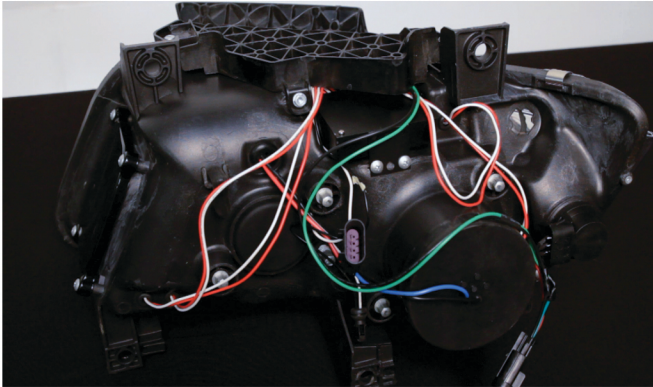
14) Remove [3x] T-15 Torx screws securing the bumper bracket to the OEM headlight, then remove the bracket from the headlight.



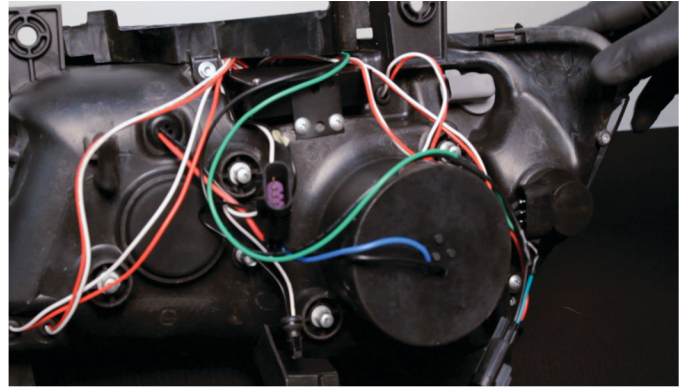
15) Remove the sidemarker socket from the OEM headlight. Never touch exposed bulbs with bare hands.



16) Transfer the bumper bracket to the Spyder headlight.



17) Reinstall [3x] T-15 Torx screws to secure bumper bracket to the Spyder headlight.



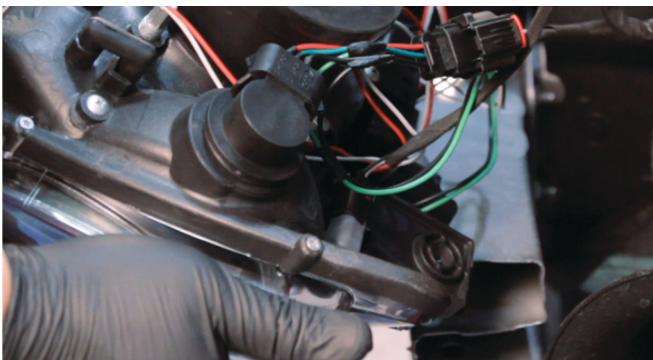
18) Install the sidemarker socket into the Spyder headlight.



19) Reconnect the high beam harness.



20) Reconnect the low beam harness.



21) Reconnect the sidemarker socket.



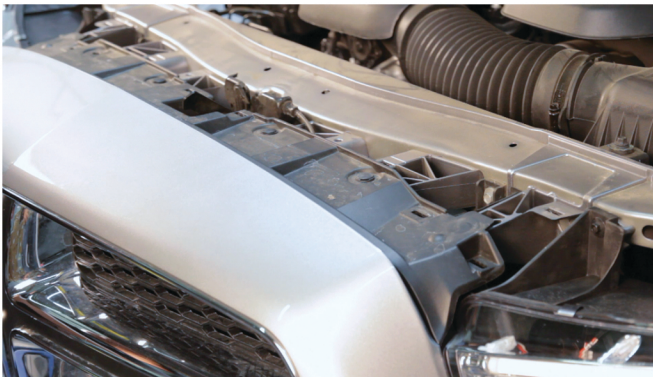
22) Seat the Spyder headlight.



23) Reinstall [4x] 8mm bolts to secure the headlight.



24) Seat front bumper fascia.



25) Reinstall [4x] plastic retainers to secure the fascia.



26) Reinstall [2x] filler panels.



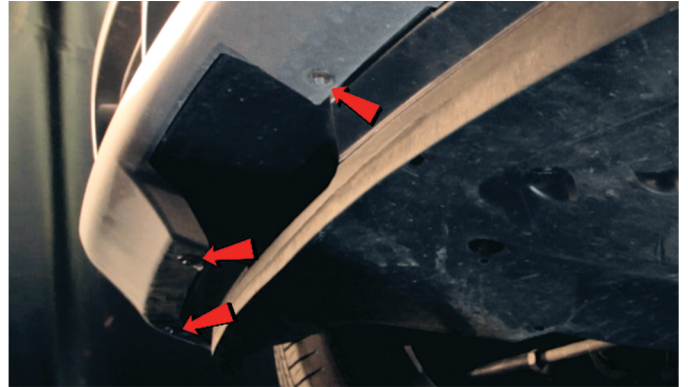
27) Connect the inner tail light wiring harness, then close the access cover.



28) Reinstall [1x] plastic retainer to secure the fender liner.



29) Reinstall [2x] plastic retainers to secure the fender liner.



30) Reinstall [3x] 7mm bolts securing the fascia from below.



31) Reinstall [3x] 7mm bolts to secure the fascia.



32) Close the hood and enjoy your new Spyder light tube projector headlights.



SPYDER
WWW.SPYDERAUTO.COM

For further help with installation, please watch our installation video. Follow the direct link below to our YouTube channel for more information.
<http://www.youtube.com/watch?v=6zcWa2TdJ-0>

Disclaimer

Spyder Auto Installation Guide is not liable for damages, injuries, and death while installing the product. This is a guide only, designed to save you time during the installation process. We take no responsibility and cannot be held liable for improper installation. If you do not know how to install your product or are not comfortable doing it yourself, please seek professional installation.