



# SPYDER

WWW.SPYDERAUTO.COM

## INSTALLATION GUIDE: PRO-YD-TCAM02-DRL-(ALL COLORS)

### Tools Required

10mm Socket & Ratchet

Panel Popper

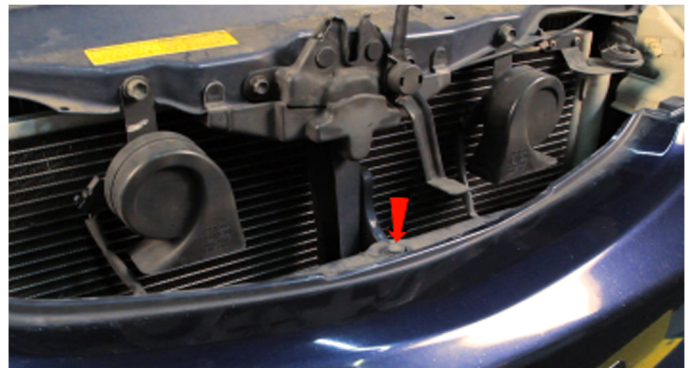


**\*Please Note\***

If you are unfamiliar with the installation processes,  
professional installation is highly recommended.



1) Open the hood, remove [2x] 10mm bolts securing the fascia on either side of the grille.



2) Remove [1x] plastic retainer securing the fascia.



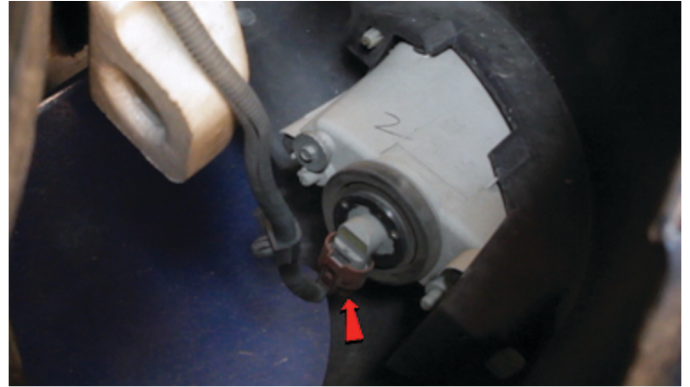
3) Remove [7x] 10mm bolts securing the fascia from below. There are [3x] per side with [1x] in the center.



4) Remove [1x] 10mm bolt securing the corner of the fascia hidden behind the fender liner.



5) Unseat the front bumper fascia.



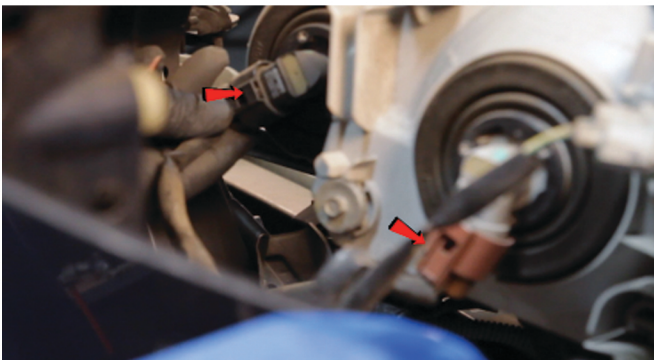
6) Disconnect the foglamp harnesses, then remove the fascia and set it aside.



7) Remove [2x] 10mm bolts securing the headlight.



8) Release the headlight retainer tabs, then unseat the headlight.



9) Disconnect the high and low beam harnesses.



10) Disconnect the turn signal harness.



11) Connect the low beam harness to the Spyder headlight.



12) Connect the high beam harness to the Spyder headlight.



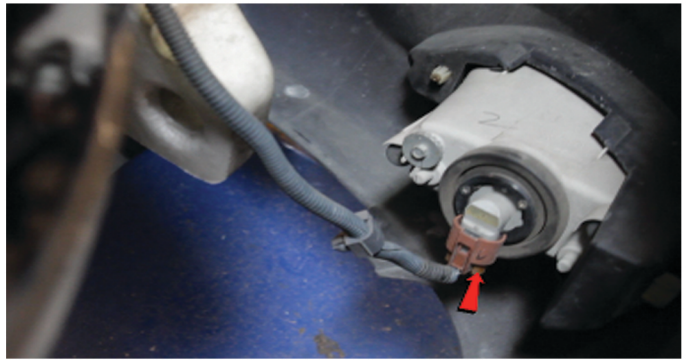
13) Reconnect the turn signal harness.



14) Seat the Spyder headlight.



15) Reinstall [2x] 10mm bolts to secure the headlight.



16) Reconnect the foglamp harness.



17) Seat the front bumper fascia.



18) Reinstall [1x] 10mm bolt in the fenderwell to secure the front bumper fascia.



19) Reinstall [7x] 10mm bolts securing the fascia from below.



20) Reinstall [8x] T-15 torx screws to secure the fascia to the undertray.



21) Reinstall [2x] 10mm bolts on either side of the grille to secure the fascia.



22) Close the hood and enjoy your new Spyder projector headlights.



**SPYDER**  
WWW.SPYDERAUTO.COM

For further help with installation, please watch our installation video. Follow the direct link below to our YouTube channel for more information.

<http://www.youtube.com/watch?v=KCV-diXFYd8>

## Disclaimer

Spyder Auto Installation Guide is not liable for damages, injuries, and death while installing the product. This is a guide only, designed to save you time during the installation process. We take no responsibility and cannot be held liable for improper installation. If you do not know how to install your product or are not comfortable doing it yourself, please seek professional installation.