



**Part number SES1581TT**  
**2017-2020 Honda Civic Si**  
**(Sedan only)**  
**1.5L turbo 4cyl.**

- 1- 3 piece cat back dual exhaust**
- 1- triangle gasket (#12036)**
- 2- 3.00 gasket (#17060)**
- 4- M10 hex bolt (#6038)**
- 4- M10 hex nut (#6069)**

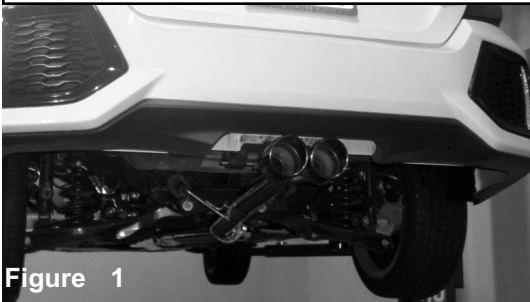


Figure 1

**Complete kit:**



Figure 2

**Congratulations! You have just purchased the best engineered, dyno-proven exhaust system available.**

**Please check the contents of this box immediately.**

Report any defective or missing parts to the Authorized Injen Technology dealer you purchased this product from. Before installing any parts of this system, please read the instructions thoroughly. If you have any questions regarding installation please contact the dealer you purchased this product from. Installation DOES require some mechanical skills. A qualified mechanic is always recommended.

\*Do not attempt to install the intake system while the engine is hot. The installation may require removal of radiator fluid line that may be hot.

Injen Technology offers a limited lifetime warranty to the original purchaser against defects in materials and workmanship. Warranty claims must be handled through the dealer from which the item was purchased.

Injen Technology 244 Pioneer Place Pomona, CA 91768 USA

**Please check the contents of this box immediately.**  
**Parts and accessories are available on line at "Injenonline.com"**

**NOTE:** All Injen exhaust systems are engineered to comply with the 95dB noise limit law specified by the California Highway Patrol and the Society of Automotive Engineers - Except ones that are designated for "Off-Road Use only".

Every Injen exhaust system is individually designed for a specific application and complies with the requirements of Sections 27150, 27151 & 27200 of the California Vehicle Code and Title 13 of the California code of Regulations, Section 10361, which establishes a noise limit of 95dB for passenger cars.

The age of your exhaust system along with certain engine modifications, such as headers, intake, etc., may also affect its current noise level output.

Please check with your local and state law enforcement agencies for exact regulation requirements.

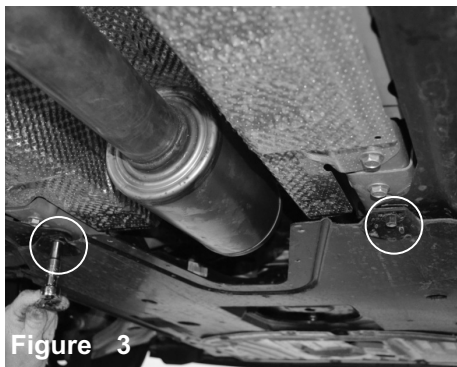


Figure 3

Loosen the screws holding in the factory engine cover. This will allow to loosen screws on pipe.



Figure 4

Loosen the 3 nuts holding in the pipe using 14 mm socket with wrench. Save these 3 nuts for later install.

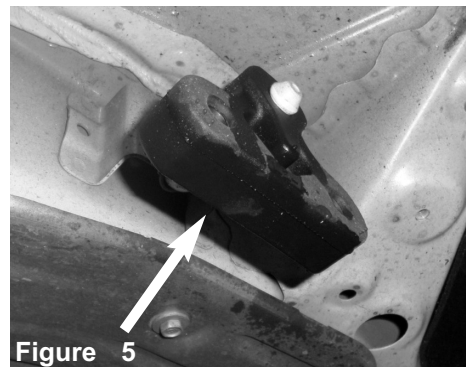
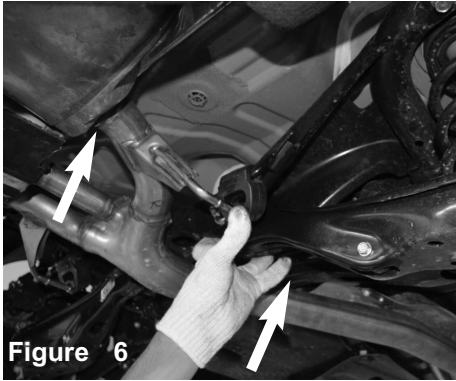


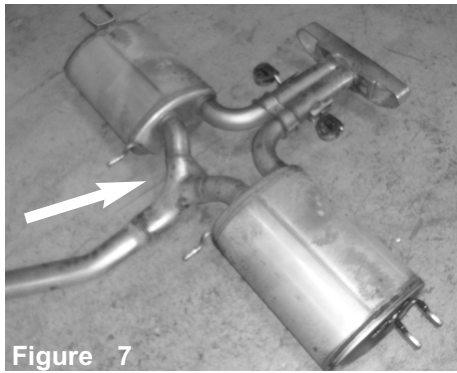
Figure 5

Pull back the rear covers allowing for access to the rear hagnars. With lubrication, remove all the exhaust hangars from the rubber isolation mounts.



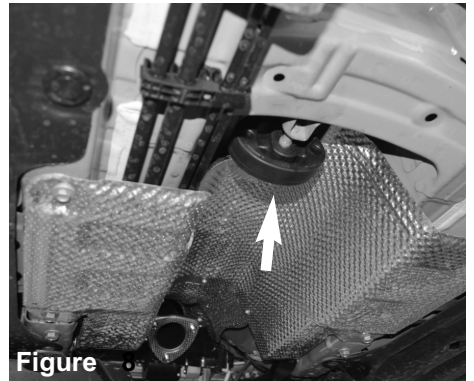
**Figure 6**

Continue to remove all hangars from the exhaust system.



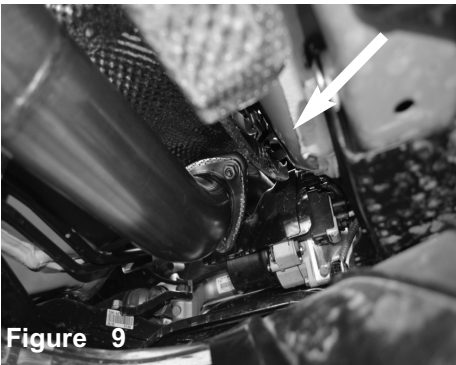
**Figure 7**

Carefully position and slide back and remove the exhaust out of the vehicle.



**Figure 8**

Remove the isolation mount from the exhaust closest to the 3 hole flange. Re-install to the vehicle. Make sure the isolation is facing in the correct direction. (*look for UP sign on mount*)



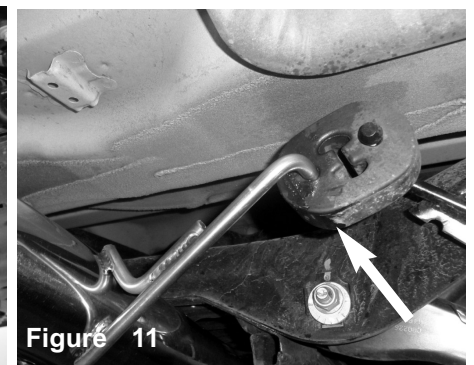
**Figure 9**

With provided 3 hole gasket, Install the front pipe to the 3 hole flange. Secure using original nuts from step 4.



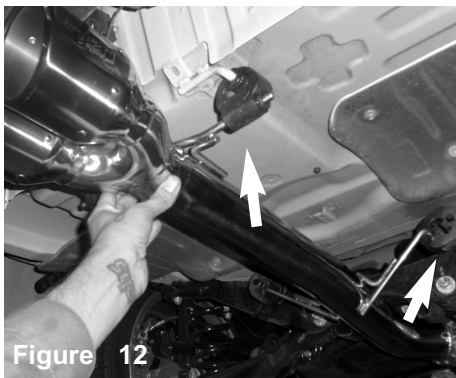
**Figure 10**

Now install the mid-pipe to the exhaust. Secure using provided 3" gasket and bolts with nuts. *Do not tighten.*



**Figure 11**

install the exhaust hangars to the isolation mounts.



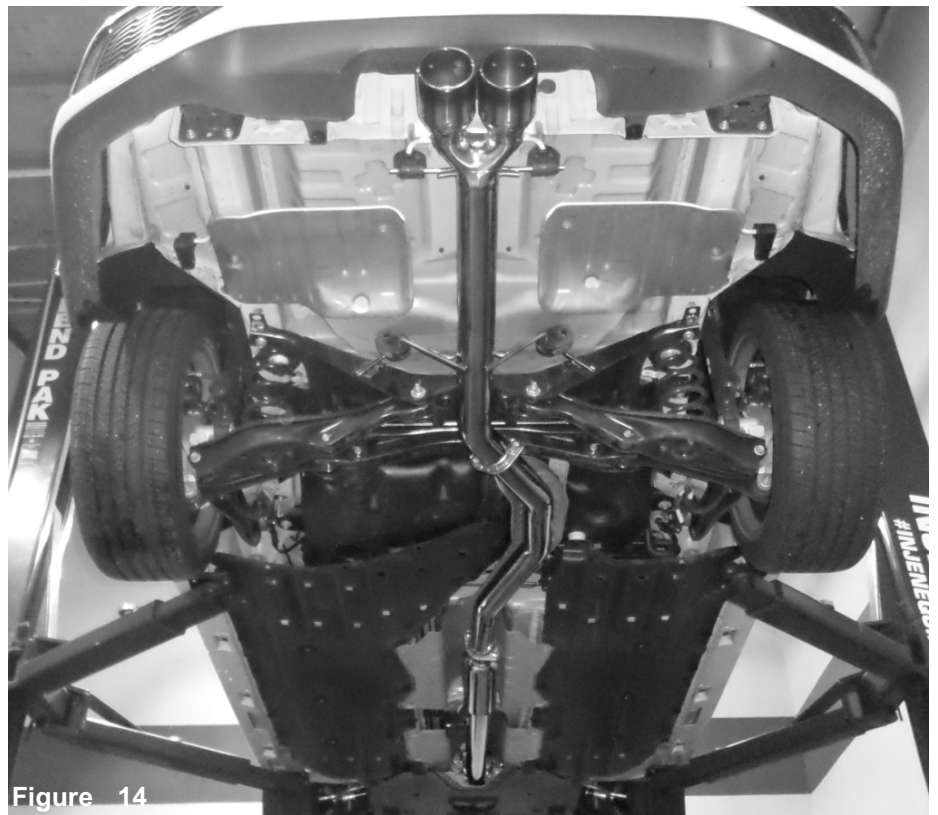
**Figure 12**

Position all the hangars to to the isolation mounts. (*look for UP sign on mount*) Position and adjust fitment. *Do not tighten.*



**Figure 13**

Position for best fit and clearance. Once the exhaust is in correct position, Secure and tighten. Secure the bracket assembly also. **Note: Exhaust system has room for adjustment, re-position and tighten for best fit.**



**Figure 14**

Congratulations! You have just completed the installation of this exhaust system. Verify and adjust the rear section of the exhaust, make sure muffler and tip do not touch any plastics or it can melt. Periodically, check the alignment of the exhaust, normal wear and tear can cause nuts and bolts to come loose. **Note: Check clearance and adjust if needed! Failure to check the alignment and adjust the exhaust can cause damage that will void the warranty. Injen Technology is not responsible for any damages caused by/from improper installation.**