

Installation Guide for 15-17 FORD F-150 Headlights

ALPHAREX specializes in designing and producing superior and uniquely stylish aftermarket automotive performance lighting with unrival innovative technology. The following installation guide we take you through the installation of your new **ALPHAREX HEADLIGHTS** for your 2015-17 Ford F-150 step by step.

NOTE: Some vehicle require the DRL harness installed for the headlight to function properly.



Table of Contents



PART I REMOVE HEADLIGHTS

- **INSTALLATION TOOLS**
- **STEP 1.** Disconnecting the negative battery terminal
- **STEP 2.** Remove the outer trim piece
- **STEP 3.** Remove the inner trim piece
- **STEP 4.** Remove the headlight bolts
- **STEP 5.** Unplug the headlights
- **STEP 6.** Transfer the light bulb sockets

PART II INSTALL HEADLIGHTS

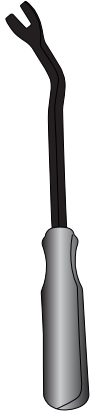
- **STEP 1.** Install ALPHAREX headlights
- **STEP 2.** Install the optional DRL harness
- **STEP 3.** Test the headlight functions
- **STEP 4.** Adjust headlight level
- **STEP 5.** Complete installation

Disclaimer: This installation article is a tutorial guide. By reading this article, you agree it is for reference only and AlphaRex USA and its distributors make no guarantee on the finished results. Under no circumstances whatsoever shall AlphaRex USA nor its distributors be liable for any damage, misuse or personal injuries. If you do not fully understand the installation procedure, it is highly recommended that you seek help from professional mechanics to do the installation.

PART I REMOVE HEADLIGHTS

INSTALLATION TOOLS

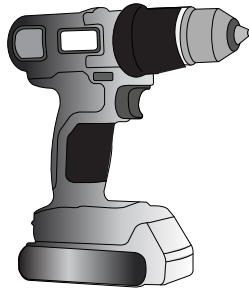
PREPARE THESE TOOLS FOR INSTALLATION



Metal
Panel
Popper



Phillips
Screwdriver



Power Tool
1/4 drill bit



1/4 Ratchet



1/4 Extension

10mm
8mm
7mm



Socket

NOTE: Whenever using a power tool, please make sure do not overtighten the screws.

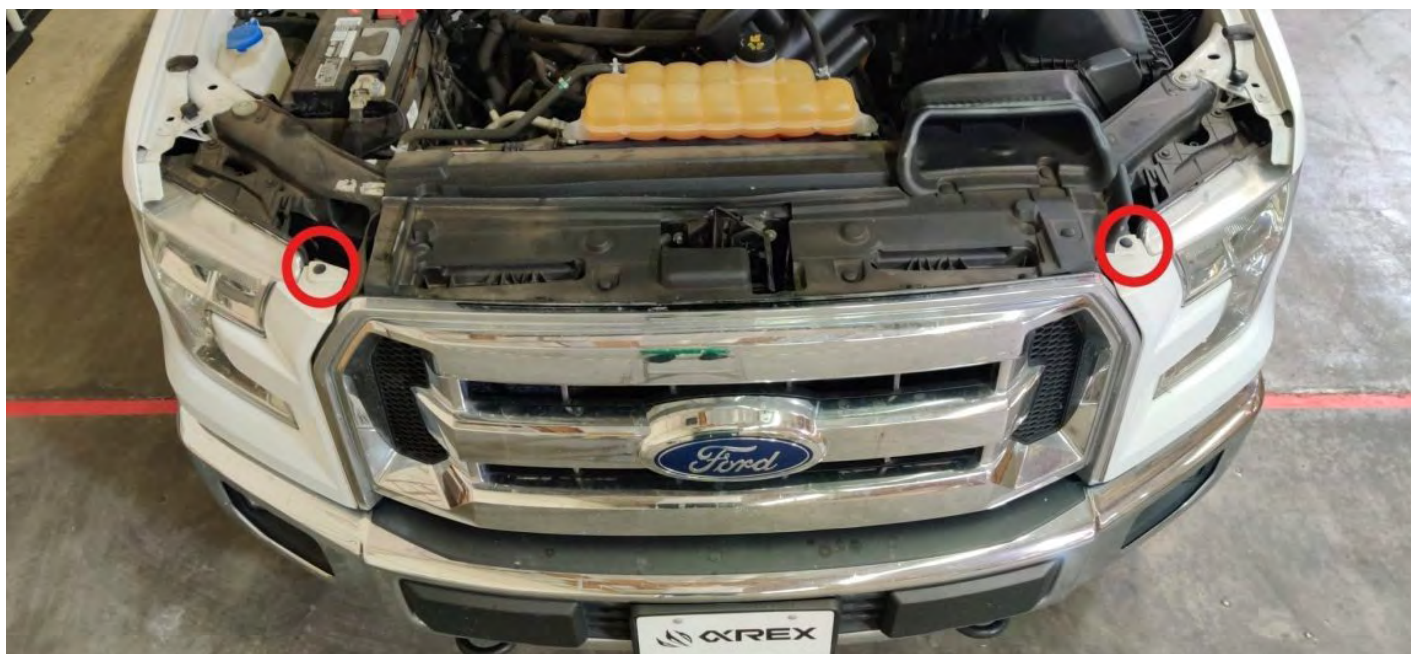
STEP 1. DISCONNECTING THE NEGATIVE BATTERY TERMINAL

Whenever working on your vehicle always start by disconnecting the negative battery terminal.



STEP 2. REMOVE THE OUTER TRIM PIECE

Start by removing two push pins.



Remove 2 X 7mm bolts from each side of wheel well.

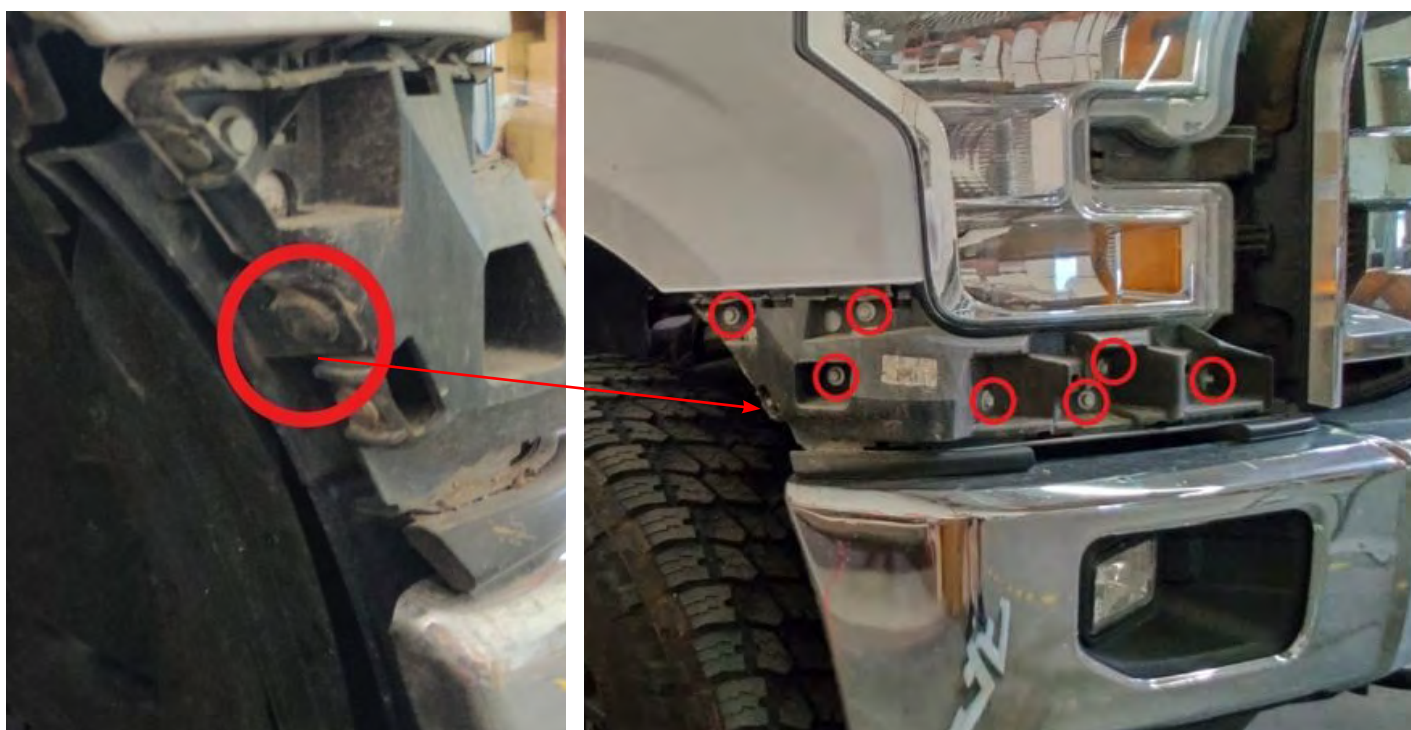


Pull outwards to remove the outer trim piece and set it aside for later reinstallation.



STEP 3. REMOVE THE INNER TRIM PIECE

Remove 6 X 10mm bolts, 1 X 8mm bolt and 1 plastic clip from each side of the headlight.



STEP 4. REMOVE THE HEADLIGHT BOLTS

In order to remove the headlight you will have to remove 3 X 10mm bolts. Use an extension to remove the center bolt. Please follow the same step for the other side.



STEP 5. UNPLUG THE HEADLIGHTS

Unplug the headlights connections to complete the removal.



STEP 6. TRANSFER THE LIGHT BULB SOCKETS

Once the headlights are off from the vehicle. Remove the turn signal and side marker sockets. They will be transferred to the new ALPHAREX headlights.



Remove the existing side marker bulb from the socket.
Connect the socket to the side marker connection and lock it in place.



Plug the turn signal socket into the female connector. Lock the socket in place.



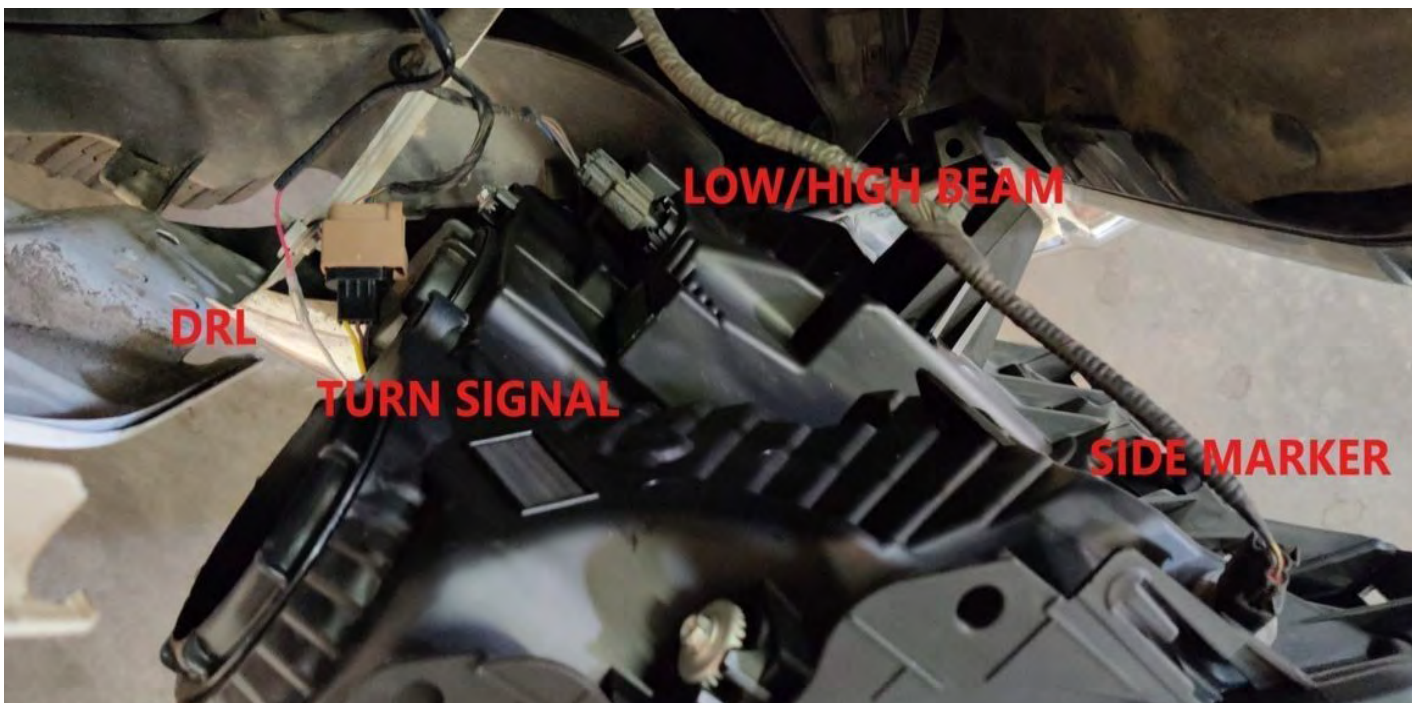
PART II INSTALL HEADLIGHTS

STEP 1. INSTALL ALPHAREX HEADLIGHTS



Before installing the new ALPHAREX headlights, make sure that all connections are reconnected and be sure to connect the white wire to the optional DRL harness.

*****We highly recommend that you test all functions with the engine on before you put everything back together*****



When you have everything put back together; you will need to drill a 1/4" hole in order to reuse the push pin for the outer trim piece.



STEP 2. INSTALL THE OPTIONAL DRL HARNESS

If you are planning to install the optional DRL harness, connect the red wire from the DRL harness (short end to driver side, long end to passenger side)
For more information about wiring the DRL harness:

[please read our article about How to wire the DRL harness?](#)



In order for the DRL to function during the day, you will need to tap the grey wire into fuse #97

STEP 3. TEST THE HEADLIGHT FUNCTIONS

Test the functions of your ALPHAREX headlights to ensure everything works properly.

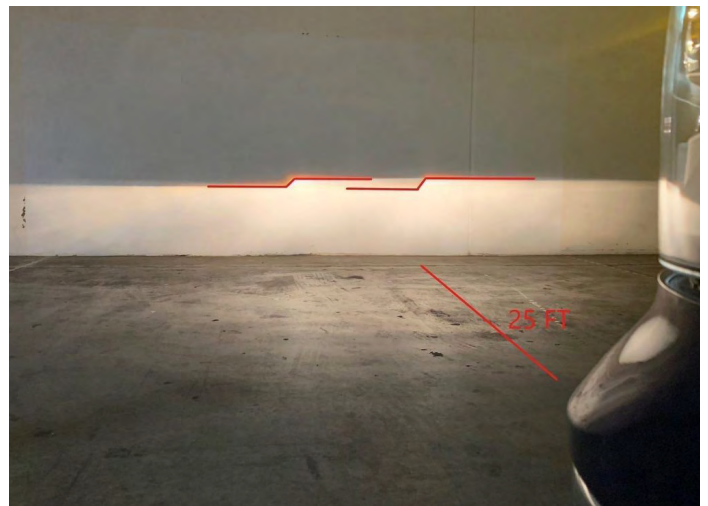


STEP 4. ADJUST HEADLIGHT LEVEL

Once everything has been tested aim your ALPHAREX headlights by parking 25ft from a wall and level the headlight evenly.

Turn clockwise: to lower the light

Turn counterclockwise: to raise the light



STEP 4. COMPLETE INSTALLATION

Congratulations! you have completed the installation for ALPHAREX 15-17 Ford F-150 Headlights

