

PRODUCT DESCRIPTION: Headlight
APPLICATION: 2007 -2013 GMC Sierra



INSTALLATION GUIDE

READ COMPLETE INSTRUCTIONS BEFORE INSTALLATION
Improper installation may void warranty.



TOOLS NEEDED: 7mm socket, 10mm socket, Pliers, Panel Popper

STEP 1



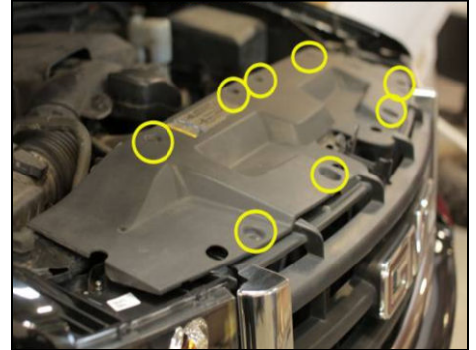
Factory GMC Sierra headlight

STEP 2



Remove negative battery terminal.

STEP 3



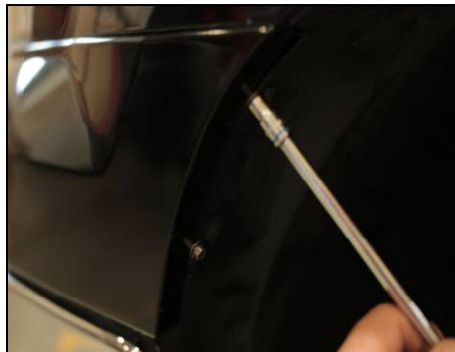
Use panel popper to remove 8 body panel clips on radiator shroud.

STEP 4



Remove factory radiator shroud and set aside.

STEP 5



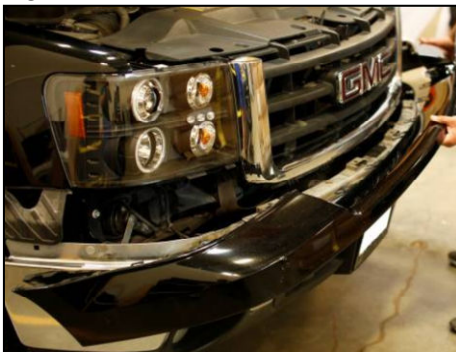
Remove two 7mm bolts on driver's side fender well. Repeat on opposite side.

STEP 6



Pull front fascia outward and forward to unclip from fender. Repeat on opposite side.

STEP 7



Remove front fascia and set aside.

STEP 8



Remove four 10mm bolts from top of radiator grill.

STEP 9



Use needle nose pliers to release both clips from radiator grill. Remove grill and set aside.

STEP 10



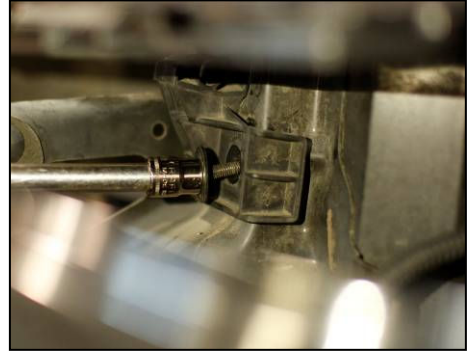
Remove outside lower 10mm headlight bolt by fender.

STEP 11



Remove two 10mm bolts on top of headlight.

STEP 12



Remove lower 10mm headlight bolt under headlight.

STEP 13



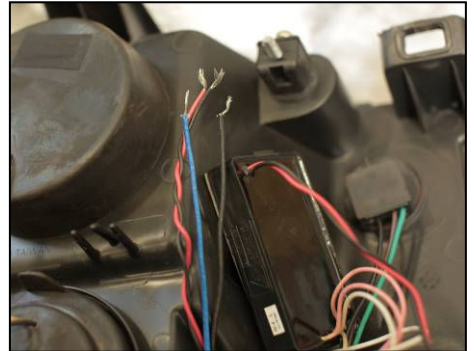
Separate lower headlight mount from factory headlight and set aside.

STEP 14



Disconnect main wiring harness from factory headlight.

STEP 15



There are two sets of wires for the LED lights and Halo light that need to be spliced.

STEP 16



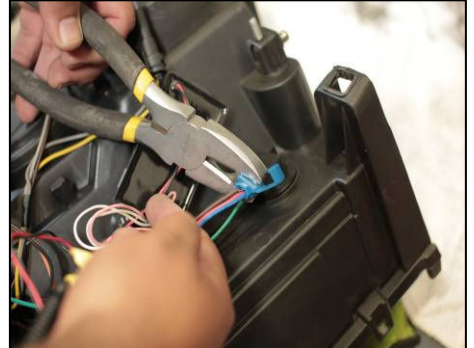
Take the red and blue wire, twist them together. Take the two black wires twist them together.

STEP 17



You may need to purchase quick splice connectors at any local auto parts store to splice the wiring.

STEP 18



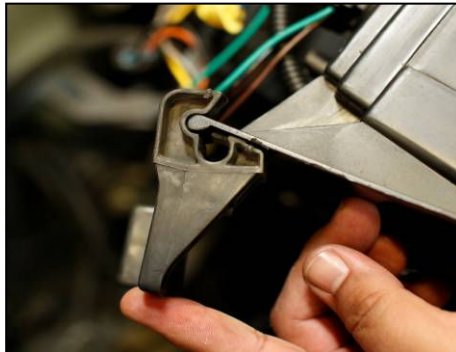
The red and blue wires will splice to the center brown wire on the parking/turn signal socket.

STEP 19



The two black wires will splice to the black wire on the same parking/turn signal socket.

STEP 20



Transfer factory headlight bracket mount to Anzo USA headlight.

STEP 21



Connect main wire harness to Anzo USA headlight.

AnzoUSA™ products are covered, by a limited one (1) year warranty, to be free of manufacturer's defects. However, certain AnzoUSA™ product categories have warranty policies which differ from this standard, please contact your representative for detailed category information. Damage due to improper installation or road hazards is not covered. Seller and manufacturers' only obligations shall be to replace the product proven to be defective. Neither seller nor manufacturer shall be liable for any injury, loss or damage, direct or consequential, arising out of the use of or the inability to use the product. Before using, user shall determine the suitability of the product for its intended use, and user assumes all risk and liability whatsoever in connection therewith. © 2008 AnzoUSA™. All rights reserved.

STEP 22



Slide headlight into bucket and reverse steps 10-12 to install headlight.

STEP 23



Repeat steps 10-22 to install opposite headlight then reverse steps 2-9 to finish installation.

STEP 24



Make sure all functions of headlight work before operating vehicle.