



DSL008 INSTALLATION INSTRUCTIONS

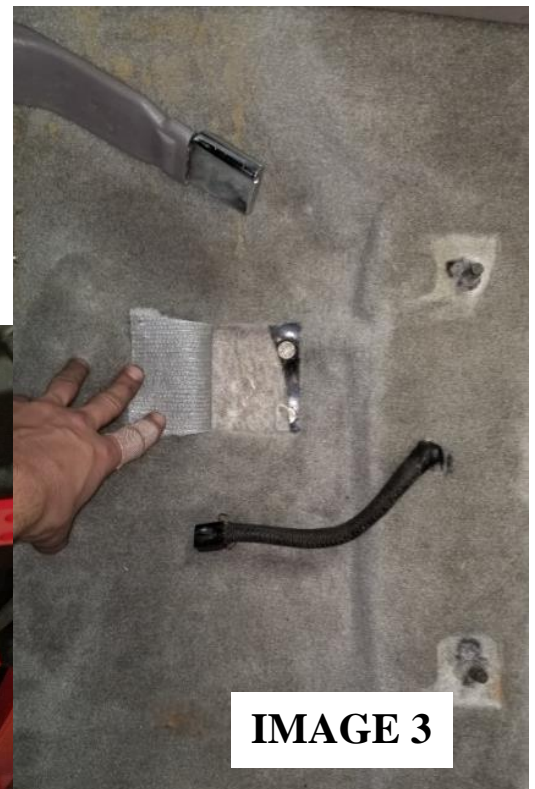
Tools required:

- 12mm, 9/16" socket/wrench

Instructions:

(This install was done on a 1992 Mustang LX with an 8.8" Rear End, Driveshaft Bolt Head sizes may vary)

- 1) Remove the driver and passenger seats using a **15mm socket/wrench**, there are four (4) bolts per seat. Unclip the seat wiring harness'. Remove seats from car.
- 2) Raise vehicle and secure with jack stands.
- 3) Using a 12 point, **12mm socket or wrench**, unbolt the rear of the driveshaft from the rear end as in **IMAGE 1**.
(BE CAREFUL NOT TO ACCIDENTALLY DAMAGE THE FRONT SLIP YOKE BY LETTING THE DRIVESHAFT SLIDE OUT OF THE TRANSMISSION)
- 4) Slide the Drive Shaft Loop over the drive shaft. The long arm will go on the driver-side.
- 5) Using a stand or an assistant, position the Drive Shaft Loop no more that 6" away from the center of the front yoke and measure that there is clearance all the way around the driveshaft. Make sure the Drive Shaft Loop is properly square to the sides of the vehicle and parallel with the front and back as in **Image 2**.
- 6) Drill one hole on each side using the mount as a guide.
(Note: Be careful not to drill into the carpet, you can use electrical tape wrapped around the drill bit at your desired depth)
- 7) Determine the location of the drilled hole under the carpet inside the cabin and cut a small access hole as in **Image 3**.
- 8) Place a nut on both sides of the bolt and start all bolts using a **9/16" socket/ wrench**.
- 9) After all bolts have been started, torque all bolts to **30 ft-lbs.**
- 10) Lower car and replace seats.



WWW.BMRSUSPENSION.COM

This product is an aftermarket accessory and not designed by the vehicles manufacturer for use on this vehicle. As such, buyer assumes all risk of any damage caused to vehicle/person during installation or use of this product.