

## DRIVESHAFT SAFETY LOOP INSTALLATION

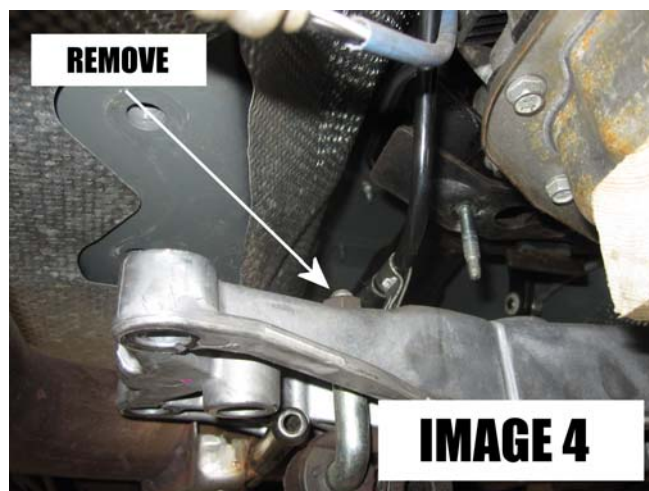
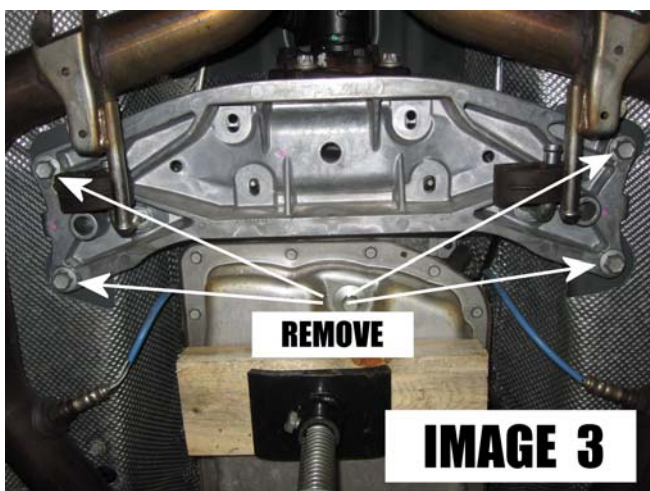
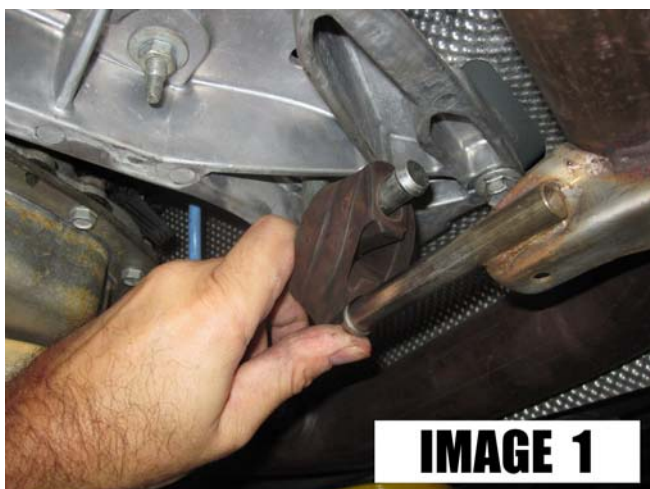
*DSL018- 2008-2009 PONTIAC G8 AUTOMATIC*

### RECOMMENDED TOOLS:

(2) 9/16" wrenches, (1) 1/2" wrench, (1) 15mm wrench  
13mm, 15mm, 1/2" socket  
3/8" drive ratchet or impact  
Hydraulic jack and jack stands or Hydraulic service lift  
Drill with 5/16" and 3/8" drill-bit

### INSTALLATION:

1. Lift vehicle and support safely under frame rails.
2. Support the transmission using a jack stand or jack.
3. As shown in **IMAGE 1** below, pry the rubber exhaust hangers off the studs and set them aside.
4. Using a 13mm socket, remove the transmission mount nuts as shown in **IMAGE 2**. Lift the transmission as high as possible.
5. Using a 15mm socket, remove the (4) transmission crossmember bolts and lower the crossmember a few inches. (**IMAGE 3**)
6. There is a transmission vent line attached to the top of the crossmember on the passenger side. Using a 15mm wrench, remove the clamp then the crossmember may be removed. (**IMAGE 4**)

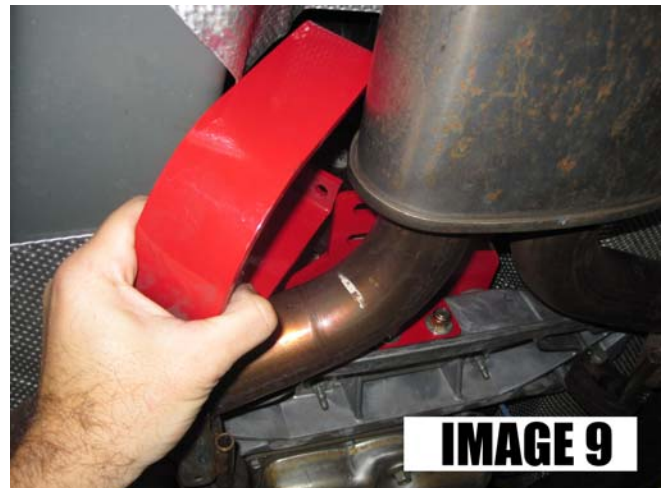
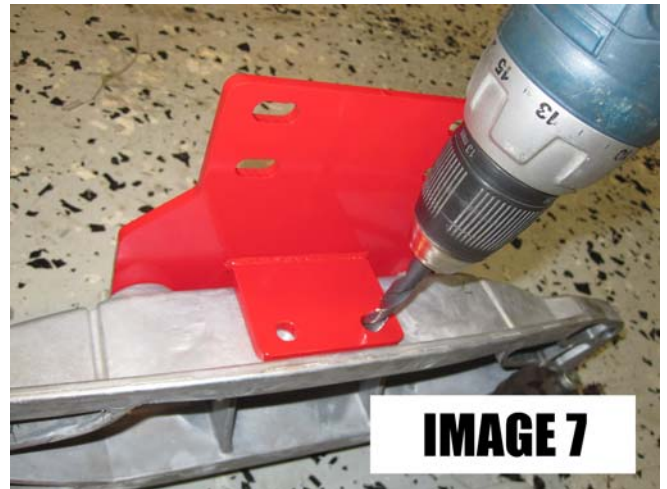


(CONTINUED)

## DRIVESHAFT SAFETY LOOP INSTALLATION (Continued)

DSL018– 2008-2009 PONTIAC G8 AUTOMATIC

7. Locate the (2) blank holes on the rear of the transmission crossmember. Using a 5/16" drill bit, drill the holes as shown in **IMAGE 5** below.
8. Using the provided 5/16" mounting hardware, bolt the BMR driveshaft loop mount to the crossmember as shown in **IMAGE 6** below.
9. Using the lower mounting holes as a drill guide, drill through the crossmember using a 3/8" drill bit. (**IMAGE 7**)
10. Un-bolt the BMR driveshaft loop mount from the crossmember then re-install the crossmember into the car. Attach the transmission vent tube then tighten the crossmember mounting bolts to 33 ft/lbs. Tighten the transmission mount to 17 ft/lbs.
11. Position the BMR driveshaft loop mount into place as shown in **IMAGE 8** below and insert the provided hardware. The 5/16" bolts go in the upper holes and the 3/8" bolts in the lower holes. Tighten both sets of bolts.



12. Slide the BMR driveshaft loop up and over the driveshaft then bolt it into place using the provided 3/8" x 1" bolts, nuts, and washers. Tighten using (2) 9/16" wrenches. (**IMAGE 9**)

**WWW.BMRFABRICATION.COM**

*This product is an aftermarket accessory and not designed by the vehicles manufacturer for use on this vehicle. As such, buyer assumes all risk of any damage caused to vehicle/person during installation or use of this product.*