

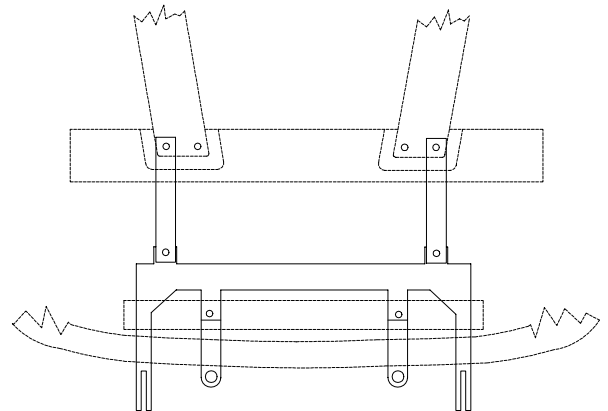


BX3208 Installation Instructions 1996-98 Pontiac Grand Am

Utilization of Blue Ox baseplates with any tow bar not approved by Automatic Equipment Manufacturing Company invalidates the limited warranty.

Installation of this baseplate requires removing the middle plastic belly pan, the air dam, the headlights, bumper molding, and lower plastic moldings. Holes will be drilled out in the front cross frame of the vehicle. The bumper molding and the air dam need to be trimmed.

1. Read the General Instruction Sheet included with this baseplate.
2. Remove the middle plastic belly pan and air dam from underneath the car.
3. The headlights, bumper molding and lower plastic moldings need to be removed so the baseplate can be installed.
4. Bolt the two extension braces (Item 2) to the baseplate (Item 1) as shown on the diagram. There are two black molded frames with two bolts each, remove each outside bolt of the frames and bolt on the braces (Item 2) with the spacers (Item 4), use the 12mm bolts and lock washers (Items 9 and 10). Be sure to use Loctite on all bolts and hand tighten. Now the baseplate (Item 1) can be held up to the front cross frame of the car so that the holes can be marked and drilled. Use a 17/32" drill bit. Be sure to center the baseplate on the frame.
5. After the holes have been drilled, bolt the baseplate (Item 1) to the frame. **NOTE: Use the flat washers (Item 11) as shown in the diagram for 1997 models. They will be placed between the frame and the baseplate.** Use the 1/2" bolts (Item 6) and 1/2" lock washers (Item 7) and 1/2" nut plates (Item 3). Tighten all bolts of the baseplate and braces. Be sure to use Loctite on all bolts.
6. The bumper molding and air dam can now be replaced. Each will need to be trimmed to fit around the baseplate and extension braces.
7. Do not substitute other devices if the tow bar pin and clip are lost.
8. Install the tow bar and safety cables according to the instructions included in their packages.
9. **DEALER OR INSTALLER: BE CERTAIN THE USER RECEIVES THE INSTRUCTION SHEET.**



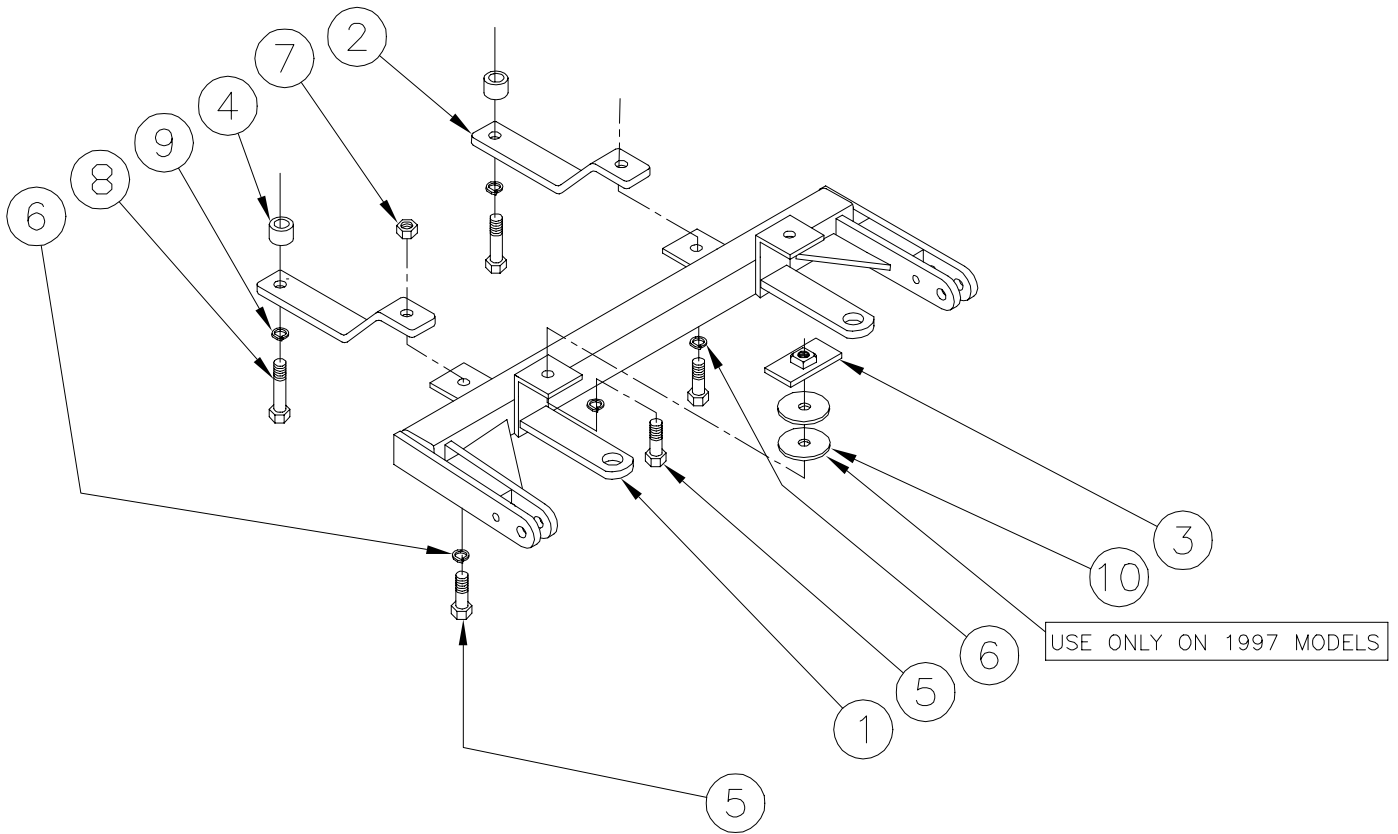
Automatic

TOOLS REQUIRED

3/4" Wrench
10mm Wrench
17/32" Drill Bit

19mm Wrench
7mm Wrench
Drill

Loctite Blue
Phillips Screwdriver



Parts List

Ref. No.	Qty.	Description
1	1	61-4951 Weldment Baseplate, BX3208
2	2	102-5279 Extension Brace
3	2	61-3950 1/2" Nut Plate
4	2	107-2086 Spacer Tube
5	4	201-0568 1/2"-13 x 11/2" Hex Bolt, Grade 8
6	4	203-0012 1/2" Lock Washer
7	2	202-0005 1/2" Hex Nut
8	2	201-0415 12mm-1.75 x 50mm, Hex Bolt Grade 8.8
9	2	203-0105 12mm Lock Washer
10	4	203-0006 5/8" Flat Washer