



Strong As An Ox™

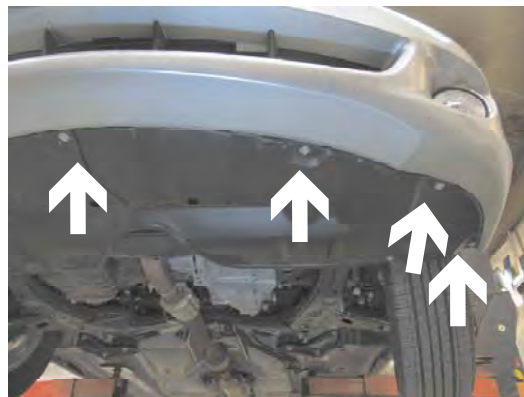
## BX3762 Installation Instructions 2004-05 Toyota Solara

Serial No.

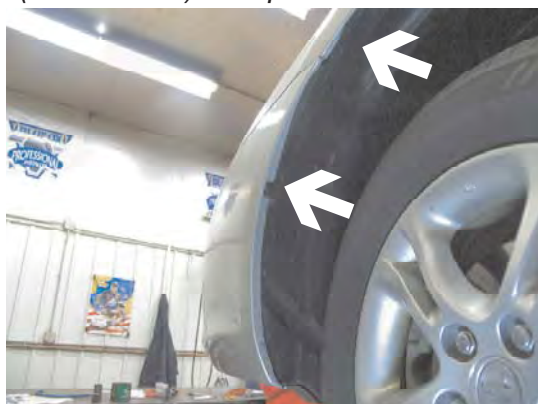
The front fascia and metal bumper are removed for baseplate installation. Holes will need to be drilled. The bulb and socket kit (BX8869) is available for the vehicle. Attachment Tabs are 18 inches center to center and a height of 15 inches.



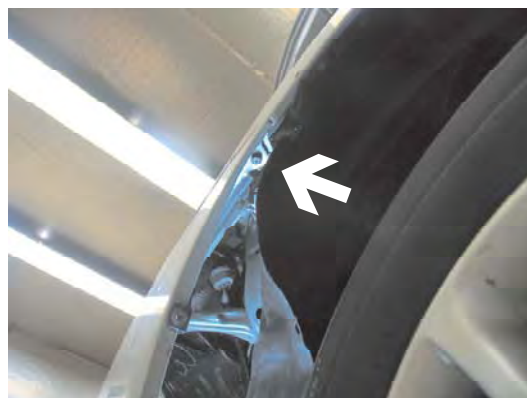
1. Remove metric bolt (Black arrow) with the 10MM socket, on both sides, and three push pins (White arrow) on top side of fascia.



2. Using the 10MM socket remove seven metric bolts on the bottom edge of fascia.



3. Just forward of front tires, on fascia and wheel well edge is one plastic screw to remove, on both sides and one push pin just above front tire on edge of wheel well, on both sides.



4. Just forward of front tires, on fascia's corner, remove one metric bolt with the 10MM socket, on both sides, pull fascia's corner to the side and forward, set aside.

5. Remove the three metric bolts from the (Driver's side shown) metal bumper with the 14 MM socket, on both sides, pull metal bumper forward and set aside.





Strong As An Ox™



6. Hold base plate in place and align back holes with existing holes on frame, on both sides. Then insert 1/2-13 Whiz nut, with 10 inch wire, into opening on frame end to align with existing lower back hole of base plate, tighten 1/2-13 hex bolt and lock washer, on both sides. While maintaining a level position for the attachment tabs, tighten all bolts. **Be sure and use Loctite red on all bolts before tightening. Tighten all bolts according to torque chart in the General Instruction sheet.**



7. Replace metal bumper with one bolt on each side and clamp the end plate of base plate to the bottom of metal bumper, on both sides. Using the baseplate as a template, drill the lower hole on end plate into lower frame webbing with the 13/32" drill bit, on both sides. Insert the 3/8-16 x 1 1/4' hex bolt through base plate, drilled hole, tighten the 3/8-16 hex nut and lock washer, on both sides. **Be sure and use Loctite red on all bolts before tightening. Tighten all bolts according to torque chart in the General Instruction sheet.**



8. Remove the two metric bolts from the metal bumper, pull bumper forward and set aside. Using the base plate as a template, drill the three remaining holes on end plate into frame with the 13/32" drill bit, on both sides. Insert the 3/8-16 nut plates into opening on the end of frame to align with drilled holes, insert the 3/8-16 x 1 1/4' hex bolts and lock washers through base plate, drilled holes and tighten into nut plates on both sides. **Be sure and use Loctite red on all bolts before tightening. Tighten all bolts according to torque chart in the General Instruction sheet.**





Strong As An Ox™

9. Reinstall metal bumper. Using the base plate as a template, drill a hole into the bottom of the metal bumper with the 13/32" drill bit, on both sides. Insert the 3/8-16 nut plate with the 12 inch wire into the opening on the front of bumper to align with drilled hole, tighten the 3/8-16 hex bolt and lock washer, on both sides. **Be sure and use Loctite red on all bolts before tightening. Tighten all bolts according to torque chart in the General Instruction sheet.**



10. Reinstall molded styrofoam on the front of metal bumper and fascia. **Be sure all electrical connections are plugged in properly.**

11. The dimensional variations between otherwise identical cars can be considerable. While the base plate was designed for easy installation, it may be necessary to tailor the baseplate slightly to compensate for auto manufacturers' tolerances. These minor adjustments may include filing a hole slightly, bending electrical rods, adding shims and/ or bending endplates.

12. Install the tow bar and safety cables according to the instructions included in their packages.

13. Do **not** substitute other devices if the tow bar pin and clip are lost.

14. **DEALER OR INSTALLER: BE CERTAIN THE USER RECEIVES THE INSTRUCTION SHEET.**





Strong As An Ox™

## Tools Required

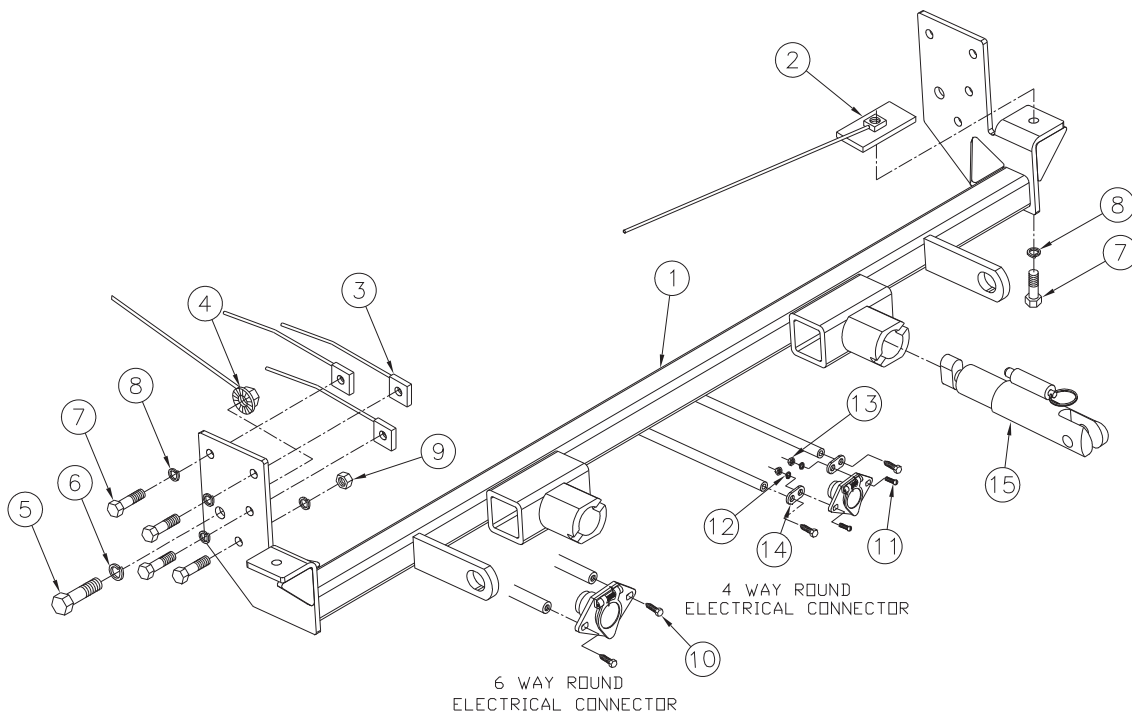
10MM Socket  
14MM Socket  
Vise Grips

9/16" Socket  
3/4" Socket  
Loctite Red

13/32" Drill Bit  
17/32" Drill Bit

## Parts List

Ref. No.	Qty.	Part No.	Description
1	1	61-6133	Weldment, Base Plate, BX3762
2	2	61-5556	Weldment, 3/8-16, Nut Plate, with 12 inch Wire
3	6	61-5208	Weldment, 3/8-16, Nut Plate, with 14 inch Wire
4	2	61-4029	1/2-13, Whiz Nut, with 10 inch Wire
5	2	201-0011	1/2-13 x 1 1/4 Hex Bolt, Grd. 5, ZP
6	2	203-0012	1/2 Lock Washer, ZP
7	8	201-0368	3/8-16 x 1 1/4 Hex Bolt, Grd. 5, ZP
8	8	203-0010	3/8 Lock Washer, ZP
9	2	202-0003	3/8-16 Hex Nut, ZP
10	2	201-0553	1/4-20 x 1/2 Hx. Wshd, Type F Screw
11	2	201-0192	#10-32 x 1/2 Slot, Rd. Hd. Screw
12	2	203-0054	#10 Lock Washer
13	2	202-0047	#10-32 Hex Nut
14	2	101-5822	Adapter, 4 Way Connector
15	2	62-3468	Attachment Tab, SF/SB, ZP
	2	226-0046	Baseplate Safety Cable, 36" CL III (Not Shown)
	2	229-0359	Quicklink, 3/8, ZP (Not Shown)
	2	290-0437	Receiver, Cap Plug (Blk) (Not Shown)



**IMPORTANT:** Use only genuine factory replacement parts on your Base Plate. Do not substitute homemade or non-typical parts. If a bolt is lost or in need of replacement, for your safety and the preservation of your Base Plate, be sure to use a replacement bolt of the same grade (Usually Grade 5, refer to parts list). Repair parts may be ordered through your nearest **Blue Ox** dealer or distributor.