



KC HiLITES

2015-PRESENT FORD F150 2017-PRESENT FORD RAPTOR

GRAVITY® LED PRO6 9-LIGHT 57" LED LIGHT BAR

KC's Gravity LED Pro6 9-Light 57" LED Overhead Light Bar System for 2015-Current Ford F-150/Raptor, delivers over 23,000 lumens in radius configuration to deliver light where you need it most. Includes overhead mounts and hardware.

WARNING: Please read all instructions before beginning installation. These guidelines are provided in good faith to help prevent any issues arising from errors during installation. The manufacturer of this product shall not be held responsible for any user actions taken or not taken during installation. There are many details of the installation that are assumed to be general mechanical knowledge to experienced installers; which are not detailed in these instructions. These installation guidelines are intended to serve as professional recommendations and are not as a step-by-step, fail-safe installation checklist. Selection of an experienced installer is the sole responsibility of the project owner.

Gravity Pro6 9 light LED light bar 180W



Above: 2017 Ford Raptor with 9 Light Gravity Pro6 LED

Parts Included: (LIST PARTS)

- (1) KC's Gravity LED Pro6 9-Light 57" Light Bar
- (1) Ford Raptor Bracket set
 - (6) 1/4"-20 x 1" Stainless button head cap screw
 - (6) Washers
 - (2) Gaskets
 - (6) 1/4" Grip-sert nuts
 - (1) Grip-Sert tool (Hex bolt, Washers, Nut)

GRAVITY LED PRO6 9-LIGHT 57" FORD F-150/ RAPTOR

TOOLS NEEDED FOR INSTALLATION

For this installation you will need painters tape, Drill bits sizes 0.0625", 0.125", 0.25", 0.375", 13mm and 7/16" sockets
13mm and 1/2" Box end wrench, 5/32" allen wrench 5/16 center punch, Razor knife and Plastic panel remover

Painters Tape



Drill Bits



Sockets



Box End Wrench



Allen Wrench



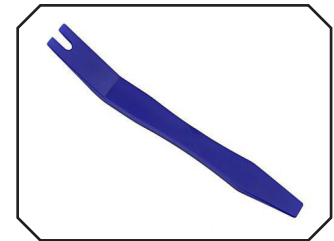
5/16" Center Punch



Razor Knife



Flat Panel Remover



STEP BY STEP INSTRUCTIONS FOR THE INSTALLATION

1. Tape the Roof & Mark the Holes

Tape off the roof of the truck with blue painters tape. Hold the brackets in place to use as a template. Using a 5/16" center punch, mark where the holes will be. The front corner of the bracket should line up with the front corner of the roof line. When aligning the bracket and marking your holes it is critical to place the bracket properly.

Figure 1



Figure 2



Figure 3



Figure 1: The roof of the vehicle is taped off and an overview of placement is shown.

Figure 2: Detailed view of how the corner should line up with the corner of the roof line after it is installed.

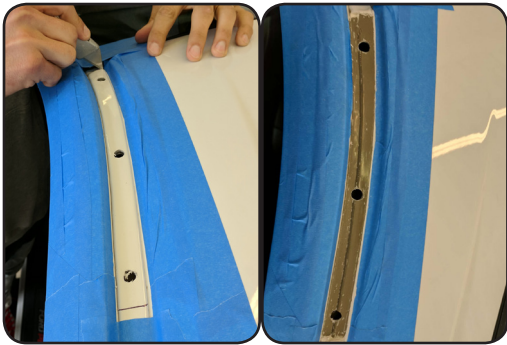
Figure 3: Shows how to use the center punch on the vehicle.

GRAVITY LED PRO6 9-LIGHT 57" FORD F-150/ RAPTOR



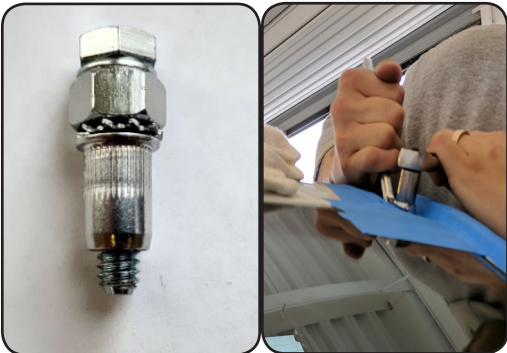
2. Drill the Holes

After carefully marking the holes and double checking the placement, begin drilling the holes. It is critical that the placement of the bracket is correct to avoid any issues during the installation. Start by drilling a $\frac{1}{16}$ " pilot hole and gradually work your way up in size until you reach $\frac{3}{8}$ ". If the nut does not slide into the $\frac{3}{8}$ " hole gently ream the hole until the nutsert fits.



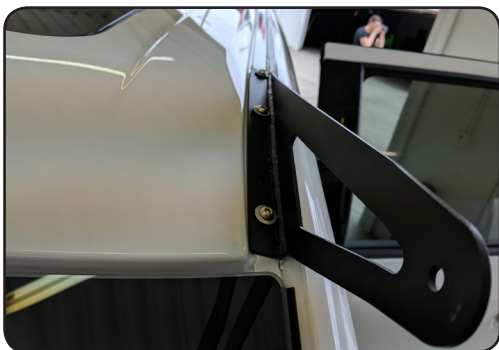
3. Remove the silicone

Remove the tape over the painted silicone and carefully mark where the bracket will sit on the roof of the truck. Do this by aligning the bracket with the newly drilled holes. Slowly score the painted silicone to begin the removal process. Carefully remove any remaining silicone with a plastic scraper or flat plastic panel remover.



4. Install the Grip-Sert Nuts

Using the supplied tool, install the aluminum rivet nuts into the newly drilled holes. When torquing the aluminum rivet nuts use caution to avoid overtorquing and "blowing out" the hole. Placing silicone sealant around the rivnuts is recommended.



5. Install the Bracket

Remove all of the painter's tape. Bolt the brackets onto the roof of the car with the supplied rubber gasket. Place the gasket between the bracket and the roof. Place the metal-rubber washer with the rubber side down. Be careful when torquing the button head cap screws to ensure the rivet nuts are not pulled out. Verify that the brackets are mounted securely. Do not put threadlock or any coating on the bolts when installing them into the nut-sets.

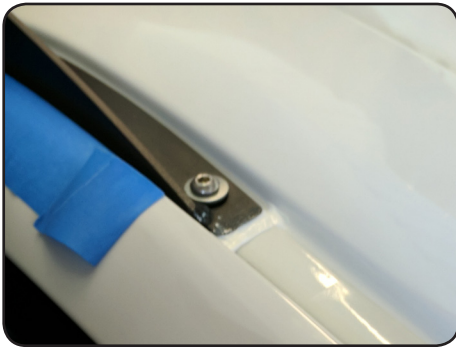
GRAVITY LED PRO6 FORD F150/ RAPTOR 9 LIGHT 57"

6. Install the Light bar

Prep the light bar for install by removing the M8 bolt that will attach the end mount bracket on the driver side and loosening but not removing the bumpstop bolts. Loosen both the M10 and M6 end mount bolts. An extra set of hands makes this process significantly easier. Install the light bar passenger side first, placing the M8 bolt through the KC Raptor overhead bracket. Install the washer, spring washer and nut (in that order) until hand tight. For the driverside place the bolt through the Pro6 end mount bracket and the KC raptor overhead bracket and install the washer, spring washer, and nut until hand tight. Line up the bumpstop so that it sits along the top of the wind sheild, not the roof of the truck. Adjust the lights as desired and tighten the end mount bolts.

7. Preload the Bumpstops

Finally pre-load the bumpstops, by putting slight upward pressure on the center of the bar, allow the rubber stops to firmly touch the winsheild, not the roof of the vehicle, and tighten the M8 bolts. Releasing the light bar will put load on the bumpstops providing stability & strength. Loading the bumpstops is an important step that gives the light bar additional support.



Optional: Silicone

Re -Tape the painted areas and add matching color silicone. To do this use a clean panel scraper or your finger to get the silicone in the gaps between the light bar bracket and the body of the vehicle. Smooth out the silicone before it dries with the panel scraper. Make sure to remove any extra silicone that may be on the vehicle or light bar bracket.

**RETORQUE ALL NUTS AND BOLTS AFTER 100 MILES AND
PERIODICALLY CHECK THEM, ESPECIALLY AFTER OFF ROADING**

PRODUCT REGISTRATION

Thank you for becoming part of the KC HiLiTES family and purchasing one of our premium KC products! With over 45 years of history in the auxiliary lighting market, you have become a part of our ever growing family, and we encourage you to register your product online at [HTTP://REGISTER.KCHILITES.COM](http://REGISTER.KCHILITES.COM) to ensure you get all the benefits of owning a KC HiLiTES product.