

# Installation Instructions

I - Sheet Number I-B076801 Rev.A



Premium Style. Lasting Performance.

For proper installation and best possible fit, please read all instructions BEFORE you begin.  
For technical assistance or to obtain missing parts, please call Customer Relations at 1-800-241-7219.

Para una instalación adecuada y el mejor ajuste posible, lea todas las instrucciones ANTES de comenzar.  
Para obtener asistencia técnica o para obtener piezas que faltan, por favor llame a Relaciones con el cliente en 1-800-241-7219.

Pour une installation correcte et le meilleur ajustement possible, s'il vous plaît lire toutes les instructions AVANT de commencer.  
Pour une assistance technique ou pour obtenir des pièces manquantes, s'il vous plaît communiquer avec les Relations à la clientèle au 1-800-241-7219.

## Care and Cleaning

- **Wash only with mild soap & dry with a clean cloth.**  
Lavar con jabón suave y seque con un paño limpio.  
Laver avec un savon doux et séchez avec un chiffon propre.
- **Every 3 months or 5000 miles check the cover tension and all components for tightness.**  
Revise cada 3 meses o 5,000 millas la tensión de la cubierta y todos los componentes estén ajustados.  
Vérifiez tous les 3 mois ou 5000 miles la tension couvercle et le serrage des composants.

## Congratulations!

You have purchased one of the many quality Lund® branded products offered by Lund International, Inc. We take the utmost pride in our products and want you to enjoy years of satisfaction from your investment. We have made every effort to ensure that your product is top quality in terms of fit, durability, finish and ease of installation.

Usted ha comprado uno de los muchos productos de calidad ofrecidos por Lund® de marca productos ofrecidos por Lund International, Inc. Tomamos el orgullo extremo en nuestros productos y queremos que disfrute durante años de su inversión. Hemos hecho todos los lo posible para que su producto es de calidad superior en cuanto a ajuste, durabilidad, acabado y facilidad de la instalación.

Vous avez acheté un des nombreux produits de qualité offerts par Lund® marque produits offerts par Lund International, Inc Nous sommes extrêmement fiers de nos produits et souhaitons que vous tiriez des années de satisfaction de votre investissement. Nous avons pris toutes les efforts pour s'assurer que votre produit est de qualité supérieure en termes de durabilité, de finition et la facilité de l'installation.

# INSTALLATION INSTRUCTIONS

**PART# 22675768/23075768**

**PARTS LIST:**

1	Driver/Left Sidebar	4	1/2" x 1-1/2" x 1/8" Flat Washers
1	Passenger/Right Sidebar	4	1/2" Lock Washers
2	Front Mounting Brackets (Short)	4	12-1.75mm x 120mm Hex Bolts
2	Rear Mounting Brackets (Long)	2	12-1.75mm x 40mm Hex Bolts
2	Front Support Straps (02-05) W/2 Holes	8	12mm ID x 32mm OD x 3mm Flat Washers
1	Driver/Left Front Support Bracket (06-08) with angled bend on end	6	12mm Lock Washers
1	Passenger/Right Front Support Bracket (06-08) with angled bend on end	2	12mm Hex Nuts
2	Rear Support Brackets w/90-degree bend on end (not used on regular cab models)	4	10-1.5mm x 40mm Hex Bolts
4	10mm x 35mm Bolt Plates	12	10mm ID x 30mm OD x 2.5mm Flat Washers
4	Spacer Plates	8	10mm Lock Washers
4	10mm Plastic Retainers	8	10mm Hex Nuts
4	1/2" x 2" Hex Bolts		

**PROCEDURE:**

- 1. REMOVE CONTENTS FROM BOX. VERIFY ALL PARTS ARE PRESENT. READ INSTRUCTIONS CAREFULLY BEFORE STARTING INSTALLATION. DRILLING MAY BE REQUIRED.**
- 2.** From underside the driver side front of the vehicle, remove the factory body mount bolt. Remove but do not discard the rubber bushing. Install (1) 12-1.75mm x 120mm Hex Bolt with (1) 12mm ID x 32mm OD x 3mm Flat Washer and (1) 12mm Lock Washer through the Driver Side Front Mounting Bracket. Position (1) Spacer Plate between the Mounting Bracket and the factory rubber bushing, **(Figure 4)**. Slide the complete assembly up into position under the cab mounting bracket and thread the 12mm Hex Bolt into the factory mounting hole. Snug but do not tighten at this time.
- 3.** Next select the correct Front Support Bracket for your application.

**2002-2005 Models.**

Select the straight 2-hole Support Bracket. Attach one end to the side of the Front Mounting Bracket with (1) 10mm x 40mm Hex Bolt, (2) 10mm Flat Washers, (1) 10mm Lock Washer and (1) 10mm Hex Nut. Rotate the Support Bracket up to meet the factory body mount bracket and line up the hole in the body mount bracket with the Support Bracket, **(Figure 1)**. Bolt the Support Bracket to the body mount bracket with (1) 12mm x 40mm Hex Bolt, (2) 12mm Flat Washers, (1) 12mm Lock Washer and (1) 12mm Hex Nut. **NOTE:** Some models may require drilling a mounting hole in the factory body mount bracket if not equipped.

**IMPORTANT!** Any cutting or drilling tool may break or shatter. Government regulations require safety glasses & equipment at all times when cutting or drilling.

**2006-2008 Models.**

Select the front Support Bracket with the angled end. Remove the sealing tape on the inner body panel to uncover the mounting location. Partially thread (1) 9mm Plastic Retainer onto a

10mm Bolt Plate. Insert the Bolt Plate into the mounting hole and thread the Plastic Retainer down until it is flush against the body panel, **(Figure 3)**. NOTE; The Plastic Retainer is designed to prevent the Bolt Plate from falling into the body cavity when properly installed. Secure the Support Bracket to the Bolt Plate with (1) 10mm Flat Washer, (1) 10mm Lock Washer and (1) 10mm Hex Nut. Attach the Support Bracket to the front-facing side of the Mounting Bracket with (1) 10mm x 40mm Hex Bolt, (2) 10mm Flat Washers, (1) 10mm Lock Washer and (1) 10mm Hex Nut, **(Figure 5)**. Snug but do not tighten hardware at this time.

4. Repeat Step 2 for the rear Mounting Bracket installation, **(Figure 2)**.
5. Next, select the rear Support Bracket (90-degree bend on one end). **NOTE:** The rear Support Bracket is not used on the Regular Cab models. Remove the sealing tape on the inner body panel to uncover the mounting location. Partially thread (1) 9mm Plastic Retainer onto a 10mm Bolt Plate. Insert the Bolt Plate into the mounting hole and thread the Plastic Retainer down until it is flush against the body panel, **(Figure 3)**. NOTE; The Plastic Retainer is designed to prevent the Bolt Plate from falling into the body cavity when properly installed. Secure the Support Bracket to the Bolt Plate with (1) 10mm Flat Washer, (1) 10mm Lock Washer and (1) 10mm Hex Nut. Attach the Support Bracket to the front-facing side of the Mounting Bracket with (1) 10mm x 40mm Hex Bolt, (2) 10mm Flat Washers, (1) 10mm Lock Washer and (1) 10mm Hex Nut. Snug but do not tighten hardware at this time.
6. Carefully unwrap the Sidebars and select the driver sidebar. Line up the end of the Sidebar with the front Mounting Bracket and secure with (1) 1/2" x 2" Hex Bolt, (1) 1/2" Lock washer and (1) 1/2" Flat Washer. Do not tighten hardware at this time. Repeat this step to bolt the Sidebar to the rear Mounting Bracket.
7. Align and adjust the Sidebar then tighten all hardware.
8. Do periodic inspections to the installation to make sure all hardware is secure and tight.

**To protect your investment**, wax this product after installing. Regular waxing is recommended to add a protective layer over the finish. Do not use any type of polish or wax that may contain abrasives that could damage the finish.

**For stainless steel:** Aluminum polish may be used to polish small scratches and scuffs on the finish. Mild soap may be used also to clean the Sidebar.

**For gloss black finishes:** Mild soap may be used to clean the Sidebar.

**Driver Side Installation Pictured**



Figure 1 - Front Bracket (Driver Side)



Figure 2 - Rear Bracket (Driver Side)  
Not used on Regular Cab Models

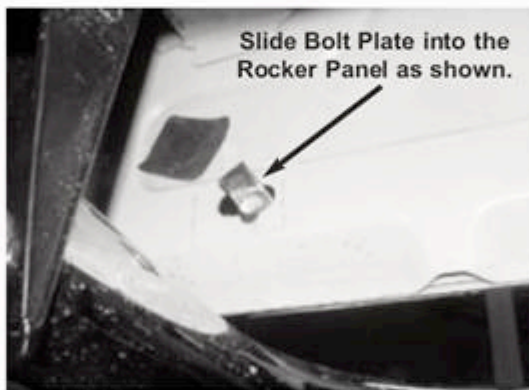
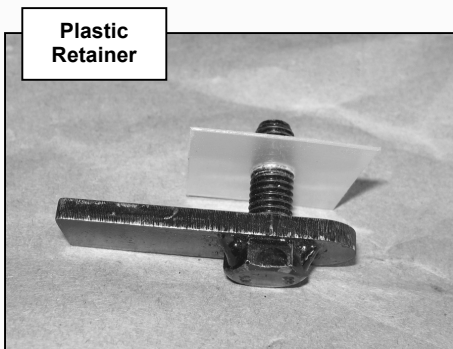


Figure 3 - Rear Bolt Plate

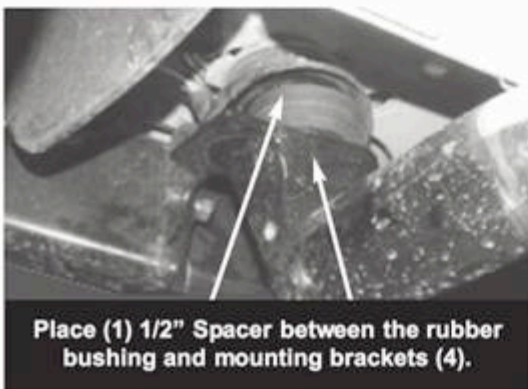
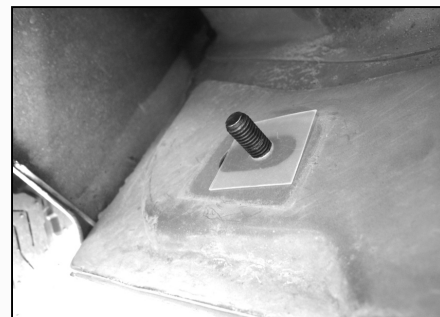
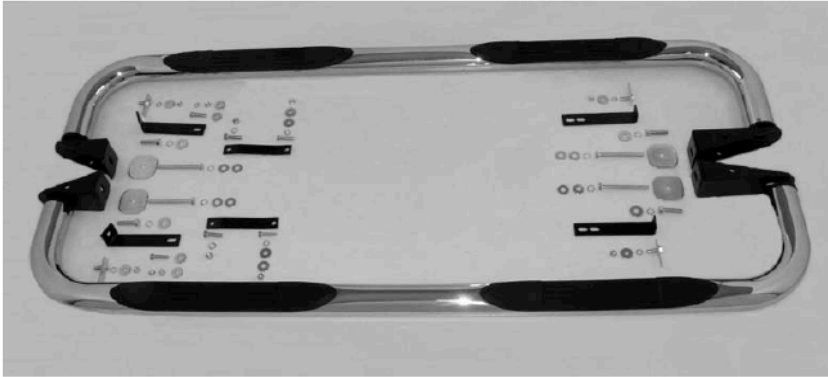


Figure 4 - 1/2" x 1.88 x 3/16" Spacer



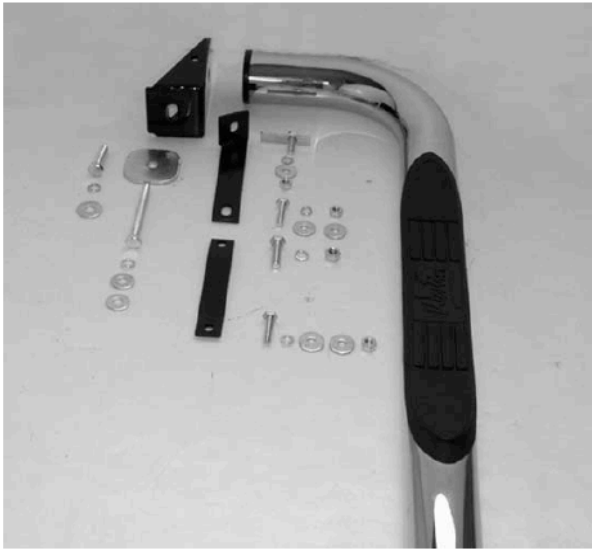
Figure 5 - Front Bracket (Driver Side)



FULL ASSEMBLY -



DRIVER FRONT -



PASSENGER FRONT -



DRIVER REAR -



PASSENGER REAR -