

Installation Instructions

I - Sheet Number I-B117602 Rev. A



Premium Style. Lasting Performance.

For proper installation and best possible fit, please read all instructions BEFORE you begin.
For technical assistance or to obtain missing parts, please call Customer Relations at 1-800-241-7219.

Para una instalación adecuada y el mejor ajuste posible, lea todas las instrucciones ANTES de comenzar.
Para obtener asistencia técnica o para obtener piezas que faltan, por favor llame a Relaciones con el cliente en 1-800-241-7219.

Pour une installation correcte et le meilleur ajustement possible, s'il vous plaît lire toutes les instructions AVANT de commencer.
Pour une assistance technique ou pour obtenir des pièces manquantes, s'il vous plaît communiquer avec les Relations à la clientèle au 1-800-241-7219.

Care and Cleaning

- **Wash only with mild soap & dry with a clean cloth.**
Lavar con jabón suave y seque con un paño limpio.
Laver avec un savon doux et séchez avec un chiffon propre.
- **Every 3 months or 5000 miles check the cover tension and all components for tightness.**
Revise cada 3 meses o 5,000 millas la tensión de la cubierta y todos los componentes estén ajustados.
Vérifiez tous les 3 mois ou 5000 miles la tension couvercle et le serrage des composants.

Congratulations!

You have purchased one of the many quality Lund® branded products offered by Lund International, Inc. We take the utmost pride in our products and want you to enjoy years of satisfaction from your investment. We have made every effort to ensure that your product is top quality in terms of fit, durability, finish and ease of installation.

Usted ha comprado uno de los muchos productos de calidad ofrecidos por Lund® de marca productos ofrecidos por Lund International, Inc. Tomamos el orgullo extremo en nuestros productos y queremos que disfrute durante años de su inversión. Hemos hecho todos los lo posible para que su producto es de calidad superior en cuanto a ajuste, durabilidad, acabado y facilidad de la instalación.

Vous avez acheté un des nombreux produits de qualité offerts par Lund® marque produits offerts par Lund International, Inc Nous sommes extrêmement fiers de nos produits et souhaitons que vous tiriez des années de satisfaction de votre investissement. Nous avons pris toutes les efforts pour s'assurer que votre produit est de qualité supérieure en termes de durabilité, de finition et la facilité de l'installation.

Installation Instructions

Part # 23578176/23678176

PARTS LIST:

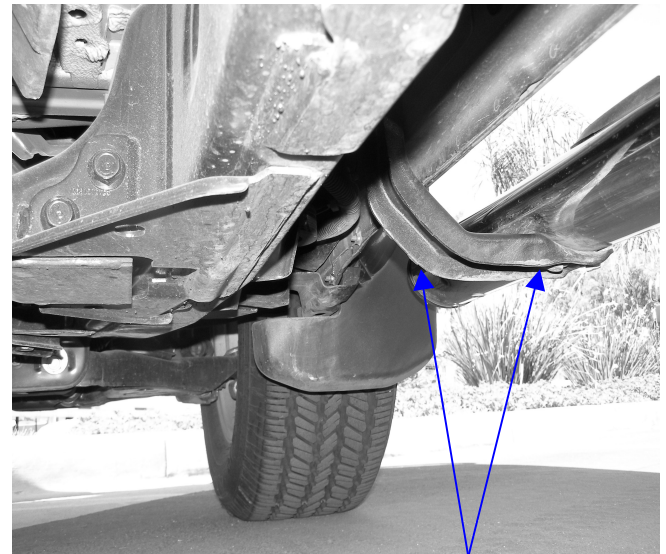
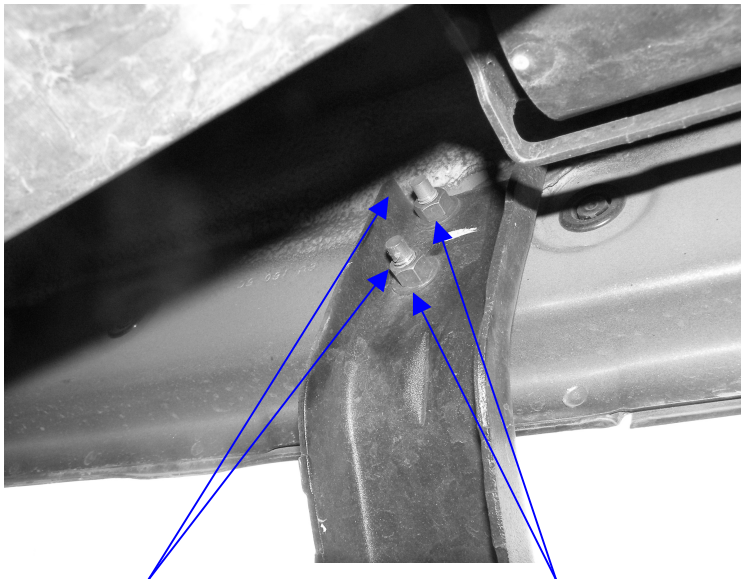
1	Passenger/Right Side Bar	8	8-1.25mm x 30mm Hex Head Bolts
1	Driver/Left Side Bar	16	8X24mm OD.X2mm Flat Washers
1	Front Passenger/Right Side Mounting Bracket	16	8mm Lock Washers
1	Rear Passenger/Right Side Mounting Bracket	8	8-1.25mm Nuts
1	Front Driver/Left Side Mounting Bracket		
1	Rear Driver/Left Side Mounting Bracket		

PROCEDURE:

1. REMOVE CONTENTS FROM BOX. VERIFY ALL PARTS ARE PRESENT. READ INSTRUCTIONS CAREFULLY.
2. On the passenger/right side, if equipped, remove the existing running board by removing the four nuts holding mount to inside of body. Install the two passenger/right side mounting brackets with the removed stock nuts, leave nuts loose for now. NOTE: Holes in brackets are off set, install with holes towards front of truck, passenger/right side shown. See Fig. #1
3. If not equipped with factory running boards – then use the four supplied 8mm nuts, washers & lock washers to install mounting brackets to truck.
4. Repeat procedures 2 & 3 for driver/left side.
5. Install side bar onto mounting brackets using four 8X25mm hex head bolts, four 8mm lock washers & four 8mm flat washers. Leave bolts loose – short end whole pattern installs towards the front of truck, passenger/right side shown.
6. Repeat procedure #5 on driver/left side.
7. Level and adjust side bars as desired and tighten.
8. Do periodic inspections to the installation to make sure that all hardware is secure and tight.

FIG. #1PASSENGER SIDE SHOWN

FIG. #2 PASSENGER SIDE SHOWN



OFF CENTER HOLES

SHORT END HOLE
PATTERN

EXISTING NUTS
NOTE: If vehicle is not equipped with factory Sidebars use the included 8mm Hex Nuts