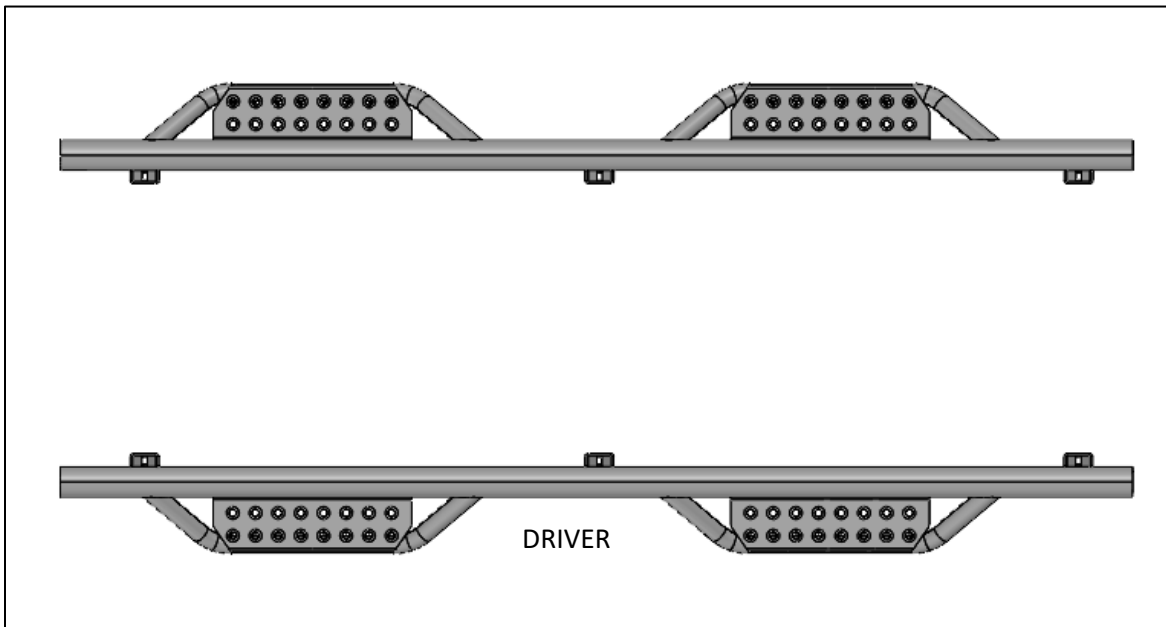


<b>HWKT-05354X</b>		
<b>HARDWARE DESCRIPTION</b>		<b>QTY.</b>
HHCS-00568X	3/8"-16X1" HEX CAP SCREW	6
FLTW-00663X	3/8" USS FLAT WASHER	6
CLIP-00647X	3/8"-16X1 3/4" BARREL NUT CLIP	6
FLHB-00797X	M8-1.25X25MM SERRATED FLANGED BOLT	6
FLNT-00696X	M8-1.25 FLANGED NUT	6
	10MM Carriage bolt	12
	10MM flanged nut	12

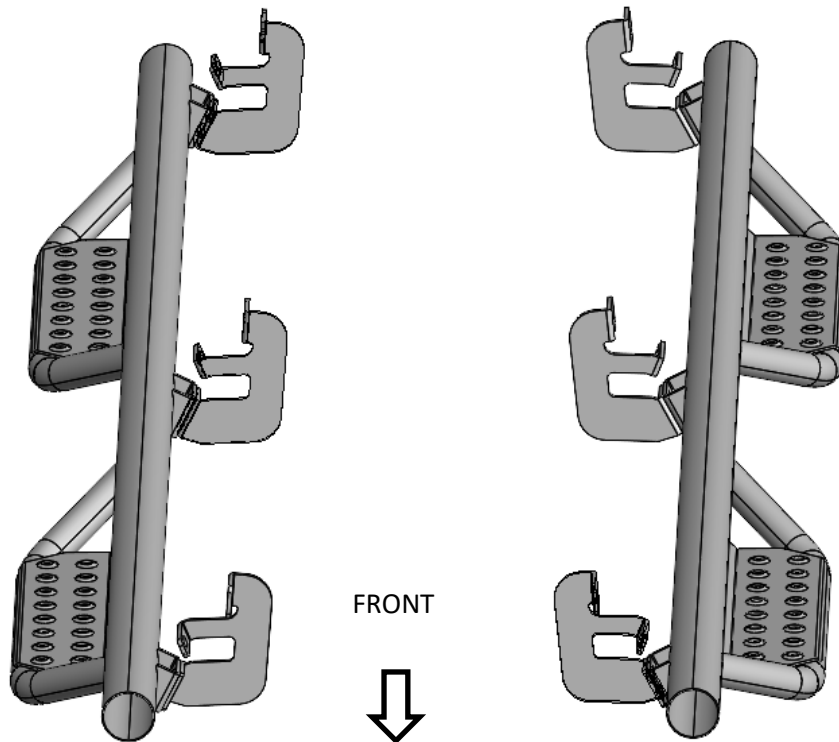


<b>PARTS INCLUDED</b>	<b>QTY</b>
Driver side step	1
Passenger side step	1
Mounting bracket	6

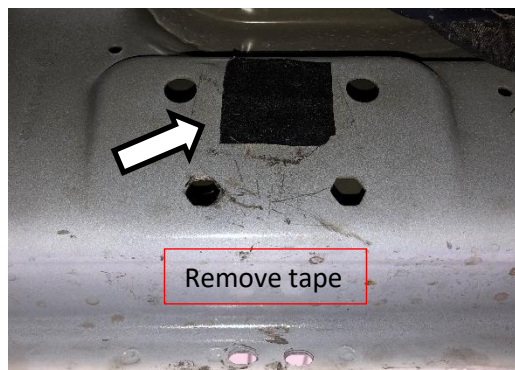
Step 1: Identify driver side step.



**Step 2.** Install the (x6) mounting brackets to each attachment point on the main tube and leave loose for now. ***Note the bracket orientation. The front bracket bends towards the front of the vehicle.***



**Step 3:** Remove any factory running boards or steps and discard.  
**Step 4:** Next, locate the mounting holes underneath the body and remove the factory tape from the three locations.



**Step 5:** Insert the supplied threaded U- clips in each mounting location.



U-clip positioning. **NOTE: Clip orientation will be the same for passenger side.**

**Step 6:** If installing the bed access step prt# **D20100CC-6**, you may have to remove the plastic bed molding if there is contact with the main tube. The bed mount has a 1/4" side-to-side variance from factory on some models. Perform a test fit to determine if this is necessary and then proceed to step 6.



**Step 7:** Carefully place step into position and start the upper 3/8"x1" hex bolt and 3/8" flat washer in the center bracket and hand tighten to hold in place. Next, install the remainder 3/8"x1" hex bolts and 3/8" washer in the front, rear brackets, and leave loose for now.



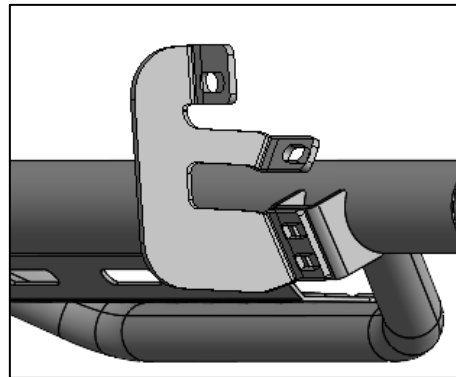
**Step 8:** Insert the black zinc M8 flanged bolts and flanged nuts in the pinch weld holes and leave loose for now.



**Step 9:** Begin tightening the lower attachment points starting with the rear bracket working your way up to the front bracket. ( 20ft/lbs )

**Step10:** Next, tighten brackets (x3) at the main tube.

**Step 11:** Finish by tightening the upper attachments points from front to back. ( 20ft/lbs )



**Step 12:** Repeat steps 2-11 for passenger side.