



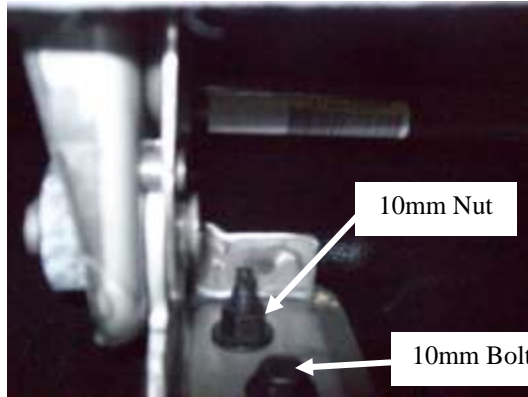
Explorer K9 Insert

Product No.
55303

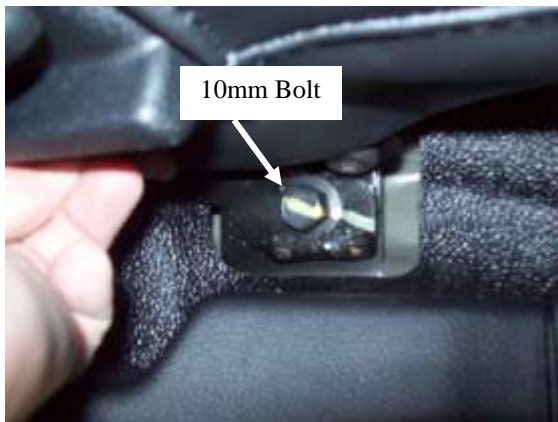
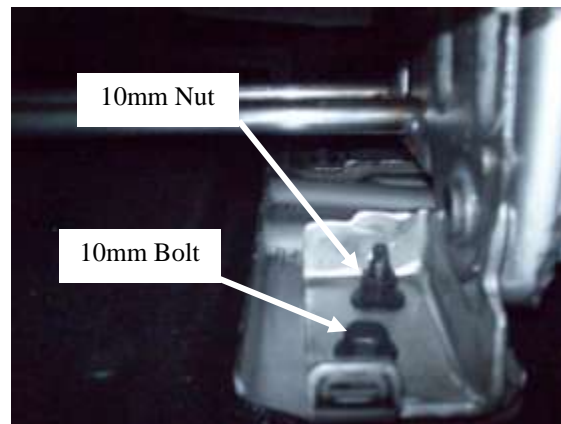
IN 587

Tools Required

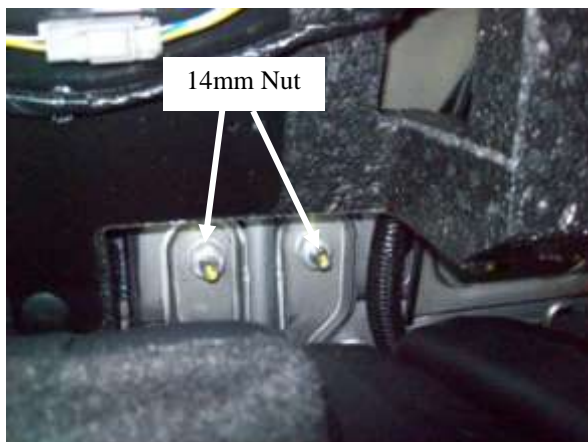
- 21mm Deep Socket
- 15mm Deep Socket
- 10mm Socket
- 7mm Socket
- 7/16" Socket
- 5/32" Allen Wrench
- 7/16" Wrench
- Phillip bit on Drill
- Small Flat Screw driver
- Panel pry tool



Pull out on lower skirt of the rear seat pulling the Christmas trees holding skirt to seat frame to access the 10mm bolt and 10mm nut holding front of rear seats remove with a 15mm socket.



Slide the lower skirt away to locate the 10mm bolt on each side of the rear seats remove with a 15mm socket.



At the rear of the rear seats locate the 14mm nuts holding down the rear of seats remove with 21mm socket.



Explorer K9 Insert

Product No.
55303

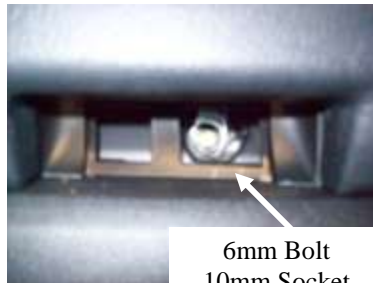
IN 587



Once the bolts and nuts are removed pull up on seats and remove from vehicle.

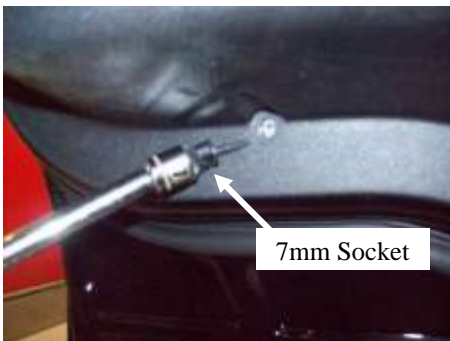


6mm Bolt
10mm Socket

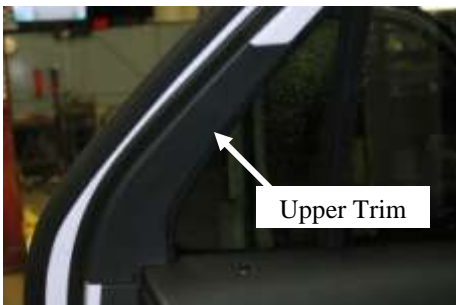


6mm Bolt
10mm Socket

Remove the rear door panels, by prying out the caps with screw driver and remove the bolts securing the panel to door. Once all screws are removed, using a panel pry tool slowly and carefully pull out from bottom and remove upper trim piece so you can lift out of window channel rubber to remove the plastic panel. **Window must be down.** With plastic panel removed Disconnect the electrical plugs from plastic panel and disconnect latch cable from handle. Also remove speaker. Remove window switch from door panel **wrap with plastic bag and use a cable tie to secure and waterproof switch make sure opening of bag is pointing down to prevent water getting into bag**, then place switch into the inside of door, this will ensure window will function from front driver switch.



7mm Socket



Upper Trim



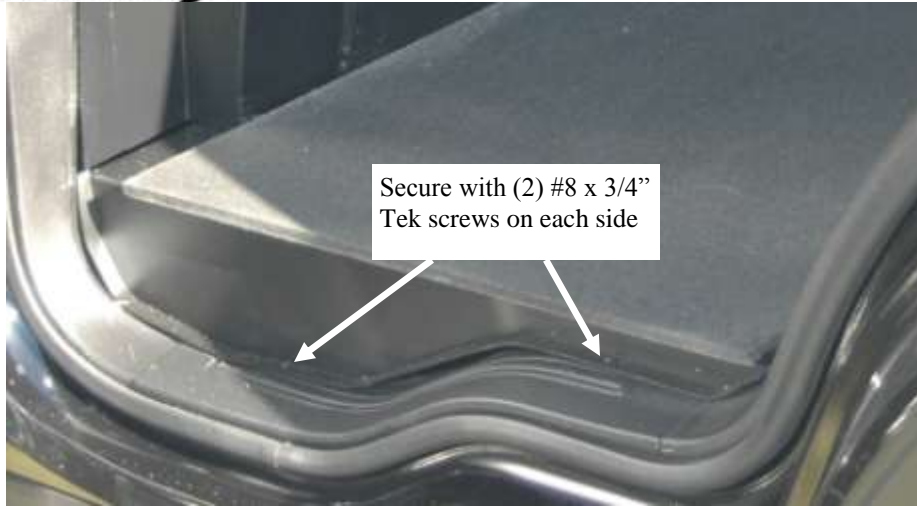


Explorer K9 Insert

Product No.

55303

IN 587



Place the base unit (Floor) into vehicle so that each of the downward flanges fit over the plastic thresholds at each rear door center the floor assembly in vehicle. Secure to floor through the flanges with (2)#8 x 3/4" Tek screw on each side.

Make sure wires are out of way under plastic threshold before installing screws.



Place the front panel assembly in and on top of the base unit (floor) and bolt from behind the two front seats , aligning the slots in base unit to line up with the nut inserts in the front assembly using (4) flat washers over 1/4-20 x 1" hex bolts and tighten in position.



Explorer K9 Insert

Product No.
55303

IN 587



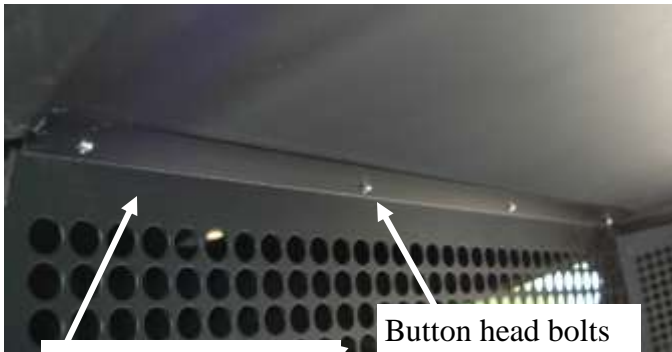
M6 X 50mm Bolt
Supplied in bolt package



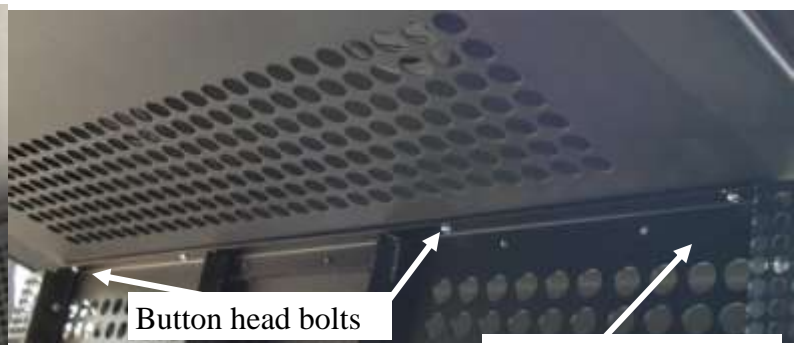
Install the driver front guard by removing the grab handle on the B pillar by popping out the screw cover and removing screws with 7mm socket. Place front guard up against the front panel assembly and from behind the front seats secure guard to the front panel assembly with (2) 1/4-20 x 1" hex head bolts through flat washers and threading into the inserts in the front panel assembly, then place a button head bolt through the top hole in guard and through the front panel assembly securing with flange nut. Tighten all bolts now all 3 bolts are through the holes.

Place one of a M6 x 50mm bolt through a flat washer and through hole in guard thread back into the upper hole to secure guard to the B pillar.

Repeat for other side.



Rear Panel Assembly



Front Panel Assembly

Slide the Lid or top into vehicle, the front of lid is wider section with holes toward the front place a button head bolt through the front panel assembly hole one each outer ends and through the slot in lid and secure with nut to hold in place. Lift the lid up in rear sliding the rear panel assembly top flange toward rear of vehicle, then slide under the flange under the lid.

Secure the rear panel to lid using button head bolts with the button head from inside the unit and secure with flange nuts, just like the front panel to lid through the slots in lid. Place all eight bolts into both the front and rear panels then tighten all bolts.

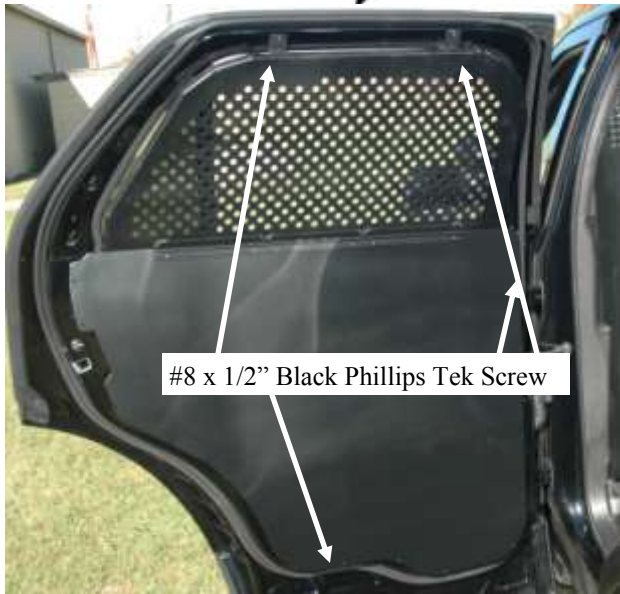


Explorer K9 Insert

Product No.

55303

IN 587



Tuck all cables and wires and switch in plastic bag into door. Cut the threads off the bolt flush with nut located in top front corner of the door when panel is removed.

Mount the lower door panel onto door, centering panel on door secure with # 8 x 1/2" Tek screws into Explorer door.

Close door, and from inside place window guard panel onto window opening center over window and secure with same type of screws to Explorer door at top and to lower door panel.

Repeat for other side.



Place the rear panel assembly into vehicle on the base unit (floor) centering the rear panel assembly with the base unit (floor) place (4)# 8 X 3/4" Phillips Tek screws through the holes in rear panel and screw into the base unit (floor) to secure into the vehicle.

After the lid is secure to both front and rear panel, place the rear lower wing in vehicle (holes are along the rear and bottom of wing) secure to the floor and rear panel with (4)# 8 X 3/4" Phillips Tek screws through the holes in wings.



Explorer K9 Insert

Product No.

55303

IN 587



Install the rear upper guard by sliding up to the headliner and place (4) # 8 x 1/2" Tek screws through the lower holes on the guard and secure to the lower guard that covers the plastic. Install (1) # 8 x 1/2" Tek screw in upper rear corner of wing to secure to the rear panel.

Repeat for other side.

Driver Front Guard 30-3666



Passenger Front Guard 30-3665

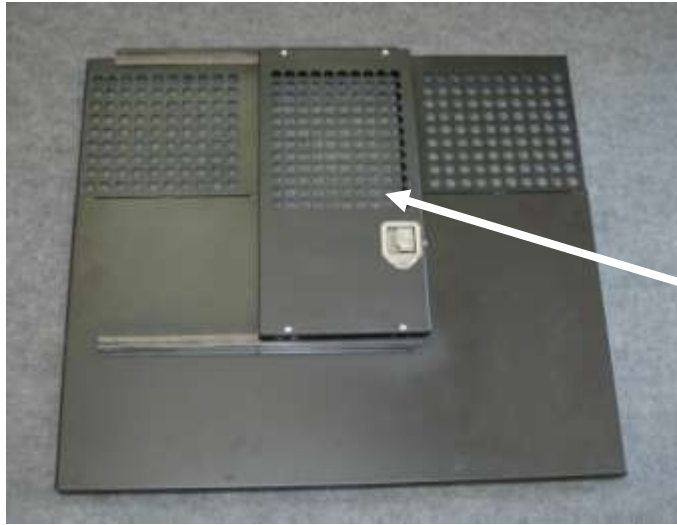




Explorer K9 Insert

Product No.
55303

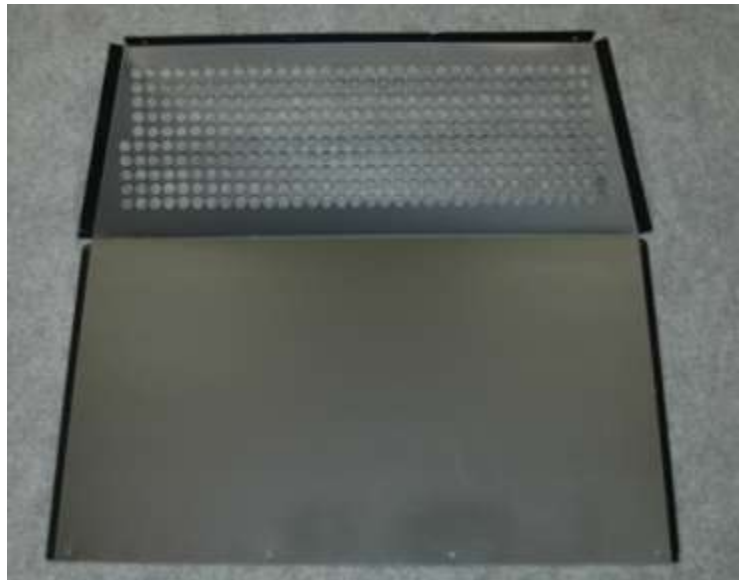
IN 587



**Front Panel Assembly
30-3650**

**Door Panel Assembly
30-3620**

**Rear Panel
30-3660**



**Base Panel Assembly
(Floor)
30-3658-S**



Explorer K9 Insert

IN 587

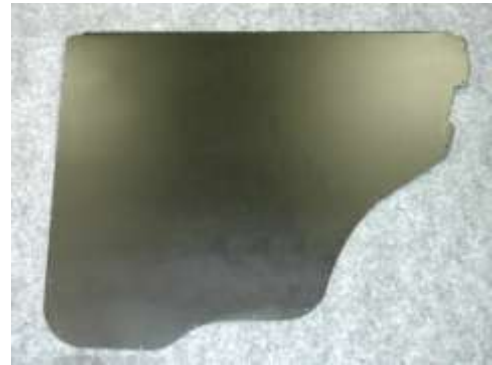
Product No.
55303



**Lid Panel
(Top)
30-3664**



**Lower Driver Panel
30-3671**



**Lower Passenger Panel
30-3652**



**Driver Window Guard Panel
30-3663-S**



**Passenger Window Guard Panel
30-3662-S**



Explorer K9 Insert

Product No.
55303

IN 587

**Rear Driver Upper
Guard
30-3670**



**Rear Passenger Upper
Guard
30-3669**



**Lower Rear Driver
Guard
30-3663-S**



**Lower Rear Passenger
Guard
30-3662-S**



Explorer K9 Insert

Product No.
55303

IN 587

